

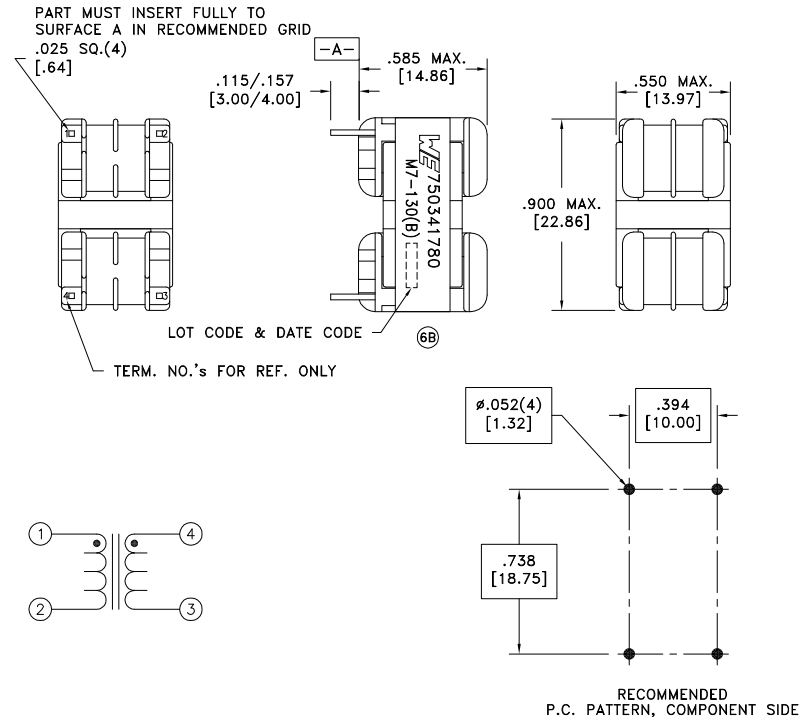
| | | |
|-------------------|------|---------------|
| CUSTOMER TERMINAL | RoHS | LEAD(Pb)-FREE |
| Sn96%, Ag4% | Yes | Yes |

more than you expect



ELECTRICAL SPECIFICATIONS @ 25°C unless otherwise noted:

| PARAMETER | TEST CONDITIONS | VALUE |
|--------------------|---|-------------------|
| D.C. RESISTANCE | 1-2 @20°C | 1.94 ohms ±10% |
| D.C. RESISTANCE | 4-3 @20°C | 1.94 ohms ±10% |
| INDUCTANCE | 1-2 10kHz, 50mVAC, Ls | 42.0 +60%/-30% mH |
| INDUCTANCE | 4-3 10kHz, 50mVAC, Ls | 42.0 +60%/-30% mH |
| SATURATION CURRENT | 1-4 tie(2+3), roll off 20% from initial | 1.5A |
| LEAKAGE INDUCTANCE | 1-4 tie(2+3), 10kHz, 50mVAC, Ls | 1.0mH min. |
| DIELECTRIC | 1-4 2514VAC, 1 second | 2011VAC, 1 minute |
| DIELECTRIC | 1-CORE tie(1+4), 1875VAC, 1 second | 1500VAC, 1 minute |
| URNS RATIO | (1-2):(4-3) | 1:1, ±2% |



⑥C

GENERAL SPECIFICATIONS:

OPERATING TEMPERATURE RANGE: -40°C to +125°C including temp rise.

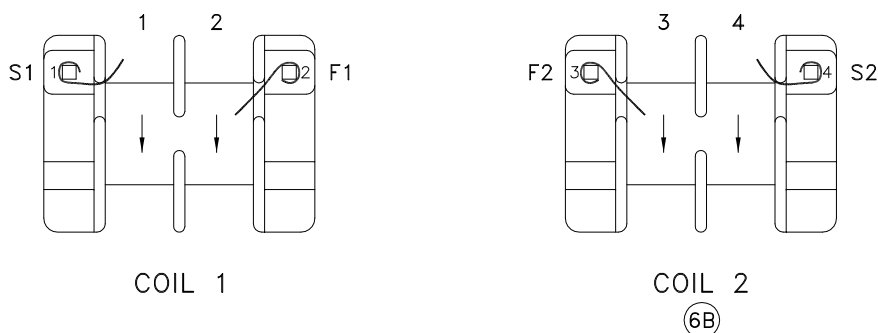
Designed to meet UL Recognized Insulation System M7-130(B), E106391.

- ⑥C Current Rating: 0.5A
- ⑥C Designed to comply with UL 1993 for 347VACrms or VDC.
- ⑥C Designed to comply with UL 840 for 347VACrms or VDC for Overvoltage Category II and Pollution Degree II.

Wire insulation & RoHS status not affected by wire color.
Wire insulation color may vary depending on availability.

| | | | | | | |
|------|-------|--|--|---|-----------------------------|------------------------------|
| REV. | DATE | Packaging Specifications Method: Tray PKG-0822 www.we-online.com/midcom | | Tolerances unless otherwise specified: Angles: ±1° Fractions: ±1/64 Decimals: ±.005 [1.3] Footprint: ±.001 [1.03] | DRAWING TITLE CMC | PART NO. 750341780 |
| 6C | 11/15 | | | | | |
| 6B | 12/14 | | | | | |
| 6A | 5/13 | SEE REVISION SHEET FOR REVISION LEVEL | | This drawing is dual dimensioned. Dimensions in brackets are in millimeters. | eiSos p/n: 750341780 | SPECIFICATION SHEET 1 OF 2 |

INFORMATION SHEET



WINDING INFORMATION

| ITEM | COIL 1 | COIL 2 | |
|------------------------------|------------|------------|--|
| WINDING SEQUENCE | 1 | 2 | |
| WIRE WIND DIRECTION | CCW | CCW | |
| WINDING STYLE | PRECISION | PRECISION | |
| WIRE TYPE | 31H | 31H | |
| TURNS (+/-) | 130 | 130 | |
| BOBBIN SECTION | 1&2 | 3&4 | |
| LAYERS | - | - | |
| WINDING WIDTH (mm) | 3.12x2 | 3.12x2 | |
| INSULATION TAPE (LAYERS) | - | - | |
| D.C. RESISTANCE (OHMS @25°C) | 2.134 max. | 2.134 max. | |
| Q (MIN.) | - | - | |
| VuSEC (MAX.) @100°C | - | - | |
| Vpeak, COIL* | - | - | |
| Isat (MIN.) @100°C** | - | - | |

*Please refer to Guidelines for the Usage of Components, Document No 171HM0002-1.

**DC bias applied to cause 20% drop from initial inductance.

BILL OF MATERIAL

| PART | DESCRIPTION | SUPPLIER | UL FILE NUMBER |
|--------|---|-----------------------|-------------------|
| BOBBIN | EE16.5, TH NYLON 70G33L | PIN SHINE INDUSTRIAL | E41938(M) |
| WIRE | 31 AWG HEAVY POLY, 155°C MW80C | ELEKTRISOLA | E143312 E63382 |
| TAPE | #1351-1 | 3M | E17385 |
| CORE | EE16.5-1 FERRITE (.64mm Ref. GAP) BSAT, MIN. @100°C = 300mT (Ae MIN. = 35.94mm ²) | ACME, A05 TDG, TL5 | - |

MECHANICAL

| PART | DESCRIPTION |
|---------------|--|
| PACKAGING | TRAY QTY: 63, BOX QTY: 441 |
| WEIGHT | 10.68g/piece |
| TERMINAL SIZE | 0.025" ±.005 [0.64mm ±.127] sq. MIN. DRILL HOLE DIAMETER 1.32mm |
| PULL FORCE | 2.0kg min. |
| COPLANARITY | n/a (thru hole device) |

STORAGE TEMPERATURE RANGE: -40°C to +125°C.

| | | |
|----------------------------------|------------|--------------------|
| WURTH ELECTRONICS MIDCOM INC. | | PART# 750341780 |
| PART NO. 750341780 | REV. 6C | |
| SPECIFICATION SHEET 2 OF 2 | | |