

PMD16K SERIES NPN
PMD17K SERIES PNP

**COMPLEMENTARY SILICON
DARLINGTON POWER
TRANSISTORS**



TO-3 CASE



www.centrasemi.com

DESCRIPTION:

The CENTRAL SEMICONDUCTOR PMD16K, PMD17K series types are complementary silicon Darlington power transistors, manufactured by the epitaxial base process, mounted in a hermetically sealed metal package, and designed for power switching applications.

MARKING: FULL PART NUMBER

MAXIMUM RATINGS: ($T_C=25^\circ\text{C}$)

Collector-Base Voltage
Collector-Emitter Voltage
Emitter-Base Voltage
Continuous Collector Current
Peak Collector Current
Continuous Base Current
Power Dissipation
Operating and Storage Junction Temperature
Thermal Resistance

SYMBOL	PMD16K60	PMD16K80	PMD16K100	UNITS
	PMD17K60	PMD17K80	PMD17K100	
V_{CBO}	60	80	100	V
V_{CEO}	60	80	100	V
V_{EBO}		5.0		V
I_C		20		A
I_{CM}		40		A
I_B		500		mA
P_D		200		W
T_J, T_{stg}		-65 to +200		$^\circ\text{C}$
θ_{JC}		0.875		$^\circ\text{C/W}$

ELECTRICAL CHARACTERISTICS: ($T_C=25^\circ\text{C}$ unless otherwise noted)

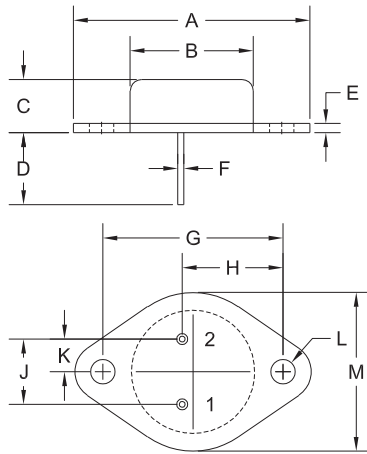
SYMBOL	TEST CONDITIONS	MIN	MAX	UNITS
I_{CER}	$V_{CE}=\text{Rated } V_{CEO}, R_{BE}=1.0\text{k}\Omega$		1.0	mA
I_{CER}	$V_{CE}=\text{Rated } V_{CEO}, R_{BE}=1.0\text{k}\Omega, T_C=150^\circ\text{C}$		5.0	mA
I_{EBO}	$V_{EB}=5.0\text{V}$		2.0	mA
BV_{CEO}	$I_C=100\text{mA}$ (PMD16K60, 17K60)	60		V
BV_{CEO}	$I_C=100\text{mA}$ (PMD16K80, 17K80)	80		V
BV_{CEO}	$I_C=100\text{mA}$ (PMD16K100, 17K100)	100		V
$V_{CE(SAT)}$	$I_C=10\text{A}, I_B=40\text{mA}$		2.0	V
$V_{BE(SAT)}$	$I_C=10\text{A}, I_B=40\text{mA}$		2.8	V
$V_{BE(ON)}$	$V_{CE}=3.0\text{V}, I_C=10\text{A}$		2.8	V
h_{FE}	$V_{CE}=3.0\text{V}, I_C=10\text{A}$ (PMD16K series)	1.0K	20K	
h_{FE}	$V_{CE}=3.0\text{V}, I_C=10\text{A}$ (PMD17K series)	800	20K	
h_{fe}	$V_{CE}=3.0\text{V}, I_C=7.0\text{A}, f=1.0\text{kHz}$	300		
f_T	$V_{CE}=3.0\text{V}, I_C=7.0\text{A}, f=1.0\text{MHz}$	4.0		MHz
C_{ob}	$V_{CB}=10\text{V}, I_E=0, f=1.0\text{MHz}$		400	pF

PMD16K SERIES NPN
 PMD17K SERIES PNP

COMPLEMENTARY SILICON
 DARLINGTON POWER
 TRANSISTORS



TO-3 CASE - MECHANICAL OUTLINE



R2

SYMBOL	DIMENSIONS			
	INCHES		MILLIMETERS	
	MIN	MAX	MIN	MAX
A	1.516	1.573	38.50	39.96
B (DIA)	0.748	0.875	19.00	22.23
C	0.250	0.450	6.35	11.43
D	0.433	0.516	11.00	13.10
E	0.054	0.065	1.38	1.65
F	0.035	0.045	0.90	1.15
G	1.177	1.197	29.90	30.40
H	0.650	0.681	16.50	17.30
J	0.420	0.440	10.67	11.18
K	0.205	0.225	5.21	5.72
L (DIA)	0.151	0.172	3.84	4.36
M	0.984	1.050	25.00	26.67

TO-3 (REV: R2)

LEAD CODE:

- 1) Base
- 2) Emitter
- Case) Collector

MARKING:

FULL PART NUMBER

R1 (26-November 2012)