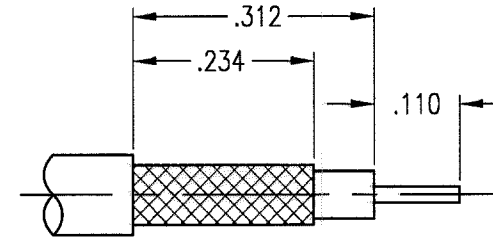
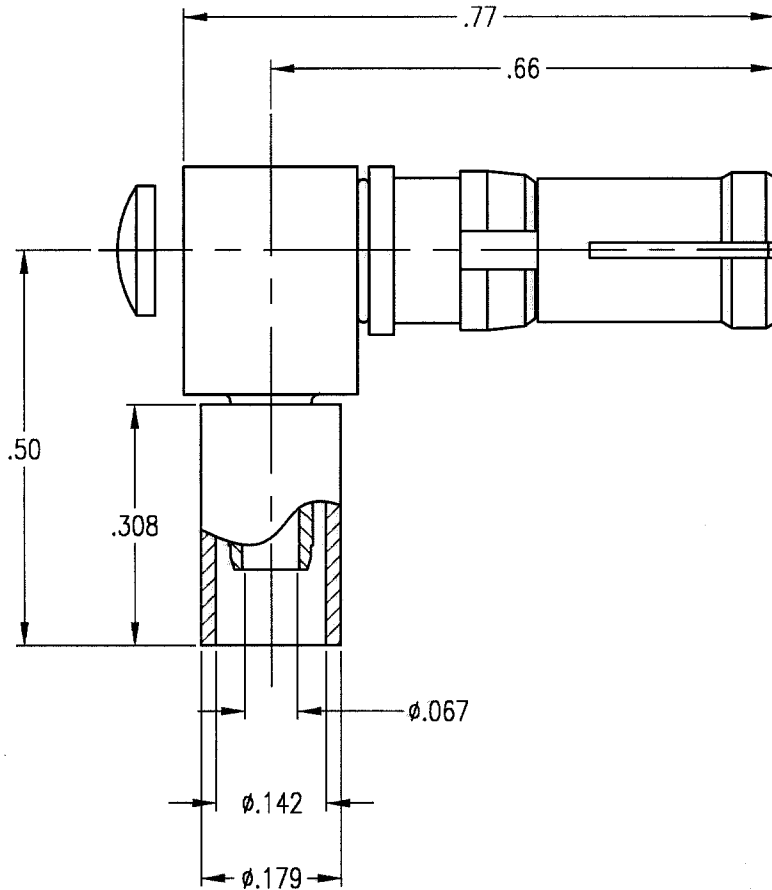


NOTES:


1. MATERIALS:
CONTACT AND MATING BODY: BERYLLIUM COPPER PER ASTM B196
INSULATOR: TEFLON PER ASTM D1710
CLIP RING: BERYLLIUM COPPER PER ASTM B194
ALL OTHER METAL PARTS: BRASS PER ASTM B16
2. FINISH:
BODIES AND CONTACT: .000030 MIN. GOLD PER MIL-G-45204 OVER
.000050 MIN. NICKEL PER QQ-N-290
CLIP RING: .000100 MIN. NICKEL PER QQ-N-290 OVER
COPPER FLASH
FERRULE AND CAP: .000005 MIN. GOLD PER MIL-G-45204 OVER
.000050 MIN. NICKEL PER QQ-N-290
3. DESIGNED FOR USE WITH RG-316 DOUBLE SHIELDED CABLE
OR EQUIVALENT
4. FOR CABLING PROCEDURE USE CAP 9-16



CABLE TRIMMING DIMENSIONS

THIS INFORMATION IS PROPRIETARY AND CONFIDENTIAL. IT IS DISCLOSED TO YOU ON CONDITION NO FURTHER DISCLOSURE IS MADE TO OTHER THAN RETCONN PERSONNEL WITHOUT WRITTEN AUTHORIZATION FROM RETCONN INC., TORRINGTON, CT.

UNLESS OTHERWISE SPECIFIED
TOLERANCES: 3 PLACE DECIMALS $\pm .005$ 2 PLACE DECIMALS $\pm .010$
FRACTIONS $\pm 1/64$ ANGLE $\pm 2^\circ$
ALL DIMENSIONS PRIOR TO PLATING
CHAMFER 1ST THREAD 45° TO ROOT DIAMETER
REMOVE ALL BURRS AND SHARP EDGES
ALL DIAMETERS TO BE CONCENTRIC WITHIN .003 TIR
SURFACE FINISH SHALL BE 63 MICROINCHES MAXIMUM
DIMENSIONS IN INCHES DO NOT SCALE PRINT

SALES DRAWING					
		RETCONN			
A SUBSIDIARY OF SPM 199 W. PEARL ROAD TORRINGTON, CT. 06790 TEL. (860) 489-1220 FAX (860) 496-7307					
TITLE 31 SERIES R/A CABLE RECEPTACLE					
DRAWN	DATE	CHECKED	SCALE	FSCM	
JED	10/15/97	JMC	4:1	ODWJ4	
APPR.	DWG. NO.	REV.			A
AT	313-910-0631G				A

REV.	DESCRIPTION OF CHANGE	DATE	DRN	APPR	MATERIAL
A	ECN 2162	12/23/98	JED	AT	
-	RELEASED PER NPR 578	10/15/97	JED	AT	
REVISIONS					SEE NOTES
					SEE NOTES