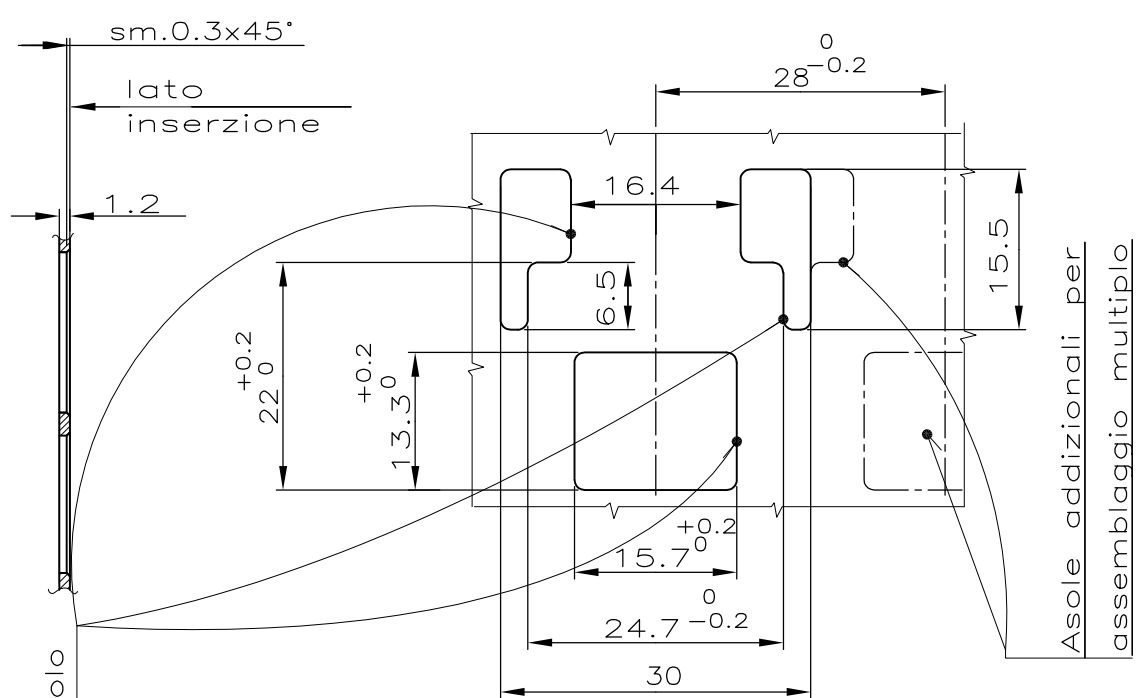


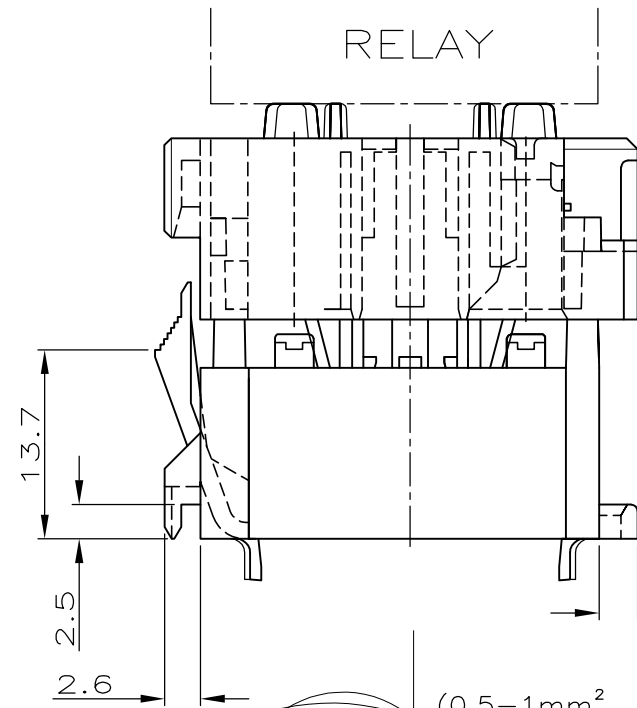
THIS DRAWING IS UNPUBLISHED. RELEASED FOR PUBLICATION  
 © COPYRIGHT - By - ALL RIGHTS RESERVED.

METRIC

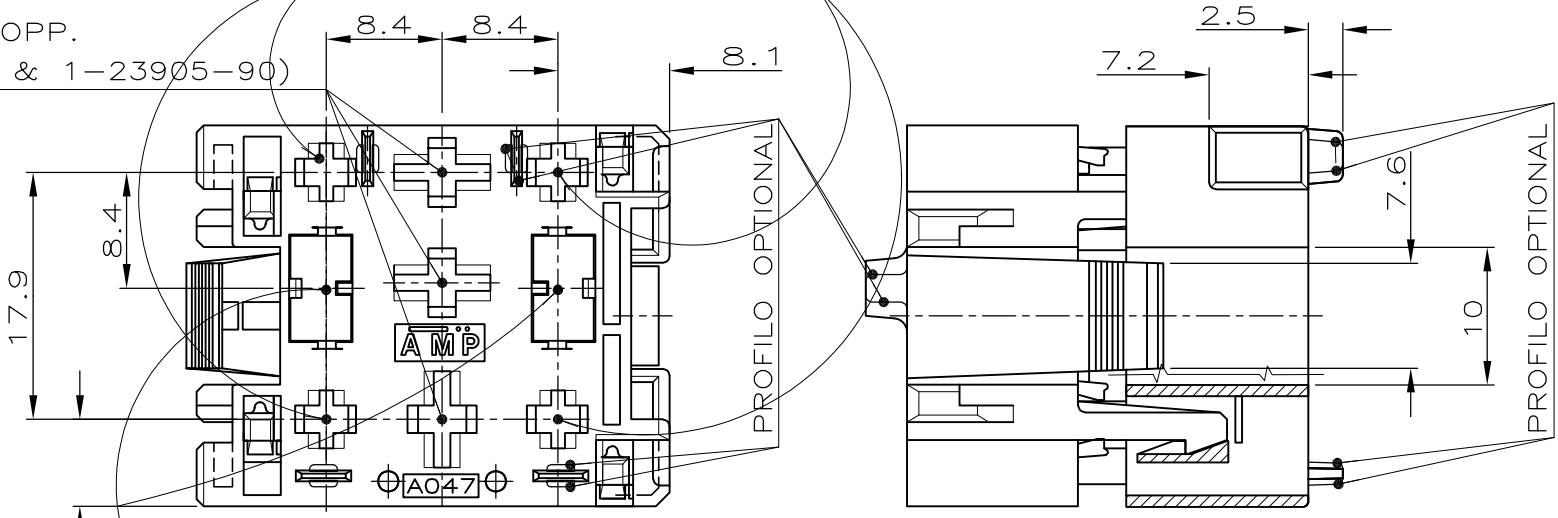
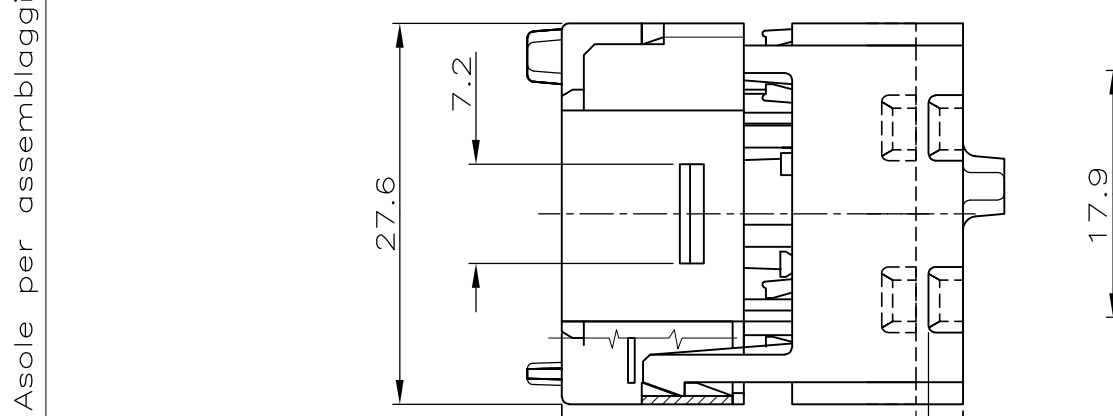
LOC		DIST		REVISIONS			
P	LTR	DESCRIPTION		DATE	DWN	APVD	
C2		REVISED PER ECO-11-005033		30MAR11	RK	HMR	
ROSA (PINK)				△	1-282435-1		
ARANCIO (ORANGE)				△	1-282435-0		
VIOLA (VIOLET)					282435-9		
GRIGIO (GREY)					282435-8		
MARRONE (BROWN)					282435-7		
GIALLO (YELLOW)					282435-6		
BLU (BLUE)					282435-5		
VERDE (GREEN)					282435-4		
ROSSO (RED)					282435-3		
NERO (BLACK)					282435-2		
NATURALE (CLEAR)					282435-1		
FINITURA / COLORE (FINISH / COLOUR)		MATERIALE (MATERIAL)		NUMERO (PART NUMBER)			
		POLYAMIDE 6.6					



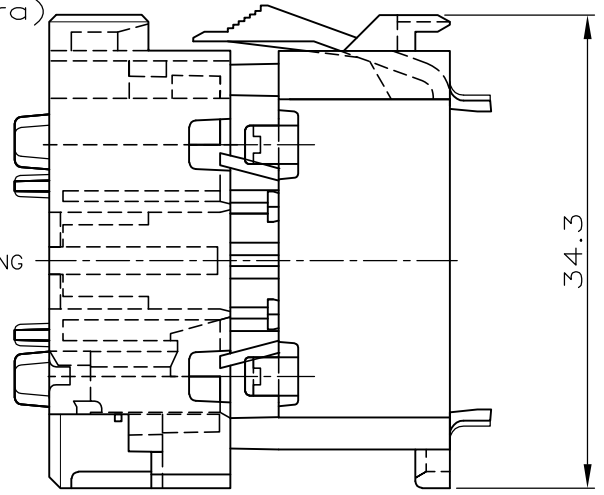
N.3 CAVITA' ADATTE PER TERMINALI  
 "AMP STANDARD POWER TIMER" P/N 927831-2 (0.5-1mm<sup>2</sup>) OPP.  
 P/N 927837-2 (1-2.5mm<sup>2</sup>) (EQUIVAL. N.FIAT 1-23903-90 & 1-23905-90)



N.4 CAVITA' ADATTE PER TERMINALI  
 "AMP JUNIOR POWER TIMER" P/N: 927771-3  
 (0.5-1mm<sup>2</sup> CAVO ISOL.RIDOTTO) (EQUIVAL. N.FIAT 1-23085-90)



N.2 CAVITA' ADATTE PER TERMINALI  
 "AMP POSITIVE LOCK MKI" P/N 160759-3(0.5-1.5 mm<sup>2</sup>)  
 OPP. P/N 154717-3 (2.5-4.0mm<sup>2</sup>) EQUIVALENTE N.FIAT  
 1-23364-44 & 1-23363-44; E TERMINALI AMP P/N 282167  
 PER ISOL. RIDOTTO (0.5-1.5mm<sup>2</sup>)



1 OBSOLETE PARTS: OBSOLETE CIS STREAMLINING PER D.RENAUD/D.SINISI

CUSTOMER DWG. FOR REFERENCE ONLY		DISEGNO PER CLIENTE SOLO PER RIFERIMENTO		FINITURA / COLORE (FINISH / COLOUR)	MATERIALE (MATERIAL)	NUMERO (PART NUMBER)
THIS DRAWING IS A CONTROLLED DOCUMENT.		DWN	10 JULY 1992	TE Connectivity		
		CHK	16 OCT.1992	9 POSITION RELAY HSG.WITH SEC.LOCK		
		APVD	-	SIZE	CAGE CODE	DRAWING NO
		PRODUCT SPEC	-	A3	00779	C=282435
		APPLICATION SPEC	-	SCALE	SHEET	REV
		WEIGHT	-	2:1	1 of 1	C2
		CUSTOMER DRAWING				

DIAM. ISOLANTE (INS. DIA. RANGE)	RANGO FILO (WIRE RANGE)	MATERIAL	FINISH