

Plug-In Bandpass Filter

PIF-60+

50Ω Constant Impedance 50 to 70 MHz

Maximum Ratings

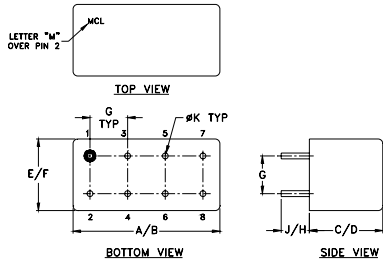
Operating Temperature	-55°C to 100°C
Storage Temperature	-55°C to 100°C
RF Power Input	0.5W max.

Permanent damage may occur if any of these limits are exceeded.

Pin Connections

INPUT	1
OUTPUT	6
GROUND	2,3,4,5,7,8
CASE GROUND	2,5,7,8

Outline Drawing



Outline Dimensions (inch/mm)

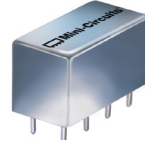
A	B	C	D	E	F
.770	.800	.385	.400	.370	.400
19.56	20.32	9.78	10.16	9.40	10.16
G	H	J	K		wt
.200	.20	.14	.031		grams
5.08	5.08	3.56	0.79		5.2

Features

- low VSWR in pass & stopbands, 1.3:1 typ.
- shielded welded case, hermetically sealed
- custom designs available

Applications

- harmonic rejection
- lab use
- military/hi-rel applications



CASE STYLE: A01

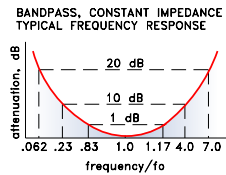
+RoHS Compliant

The +Suffix identifies RoHS Compliance. See our web site for RoHS Compliance methodologies and qualifications

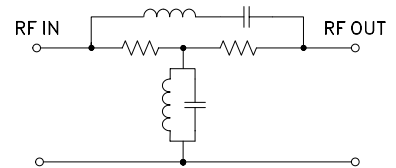
Bandpass Filter Electrical Specifications

MODEL NO.	CENTER FREQ. (MHz)	PASSBAND (MHz) (loss < 1 dB)	STOPBANDS		VSWR, 1.3:1 Typ. TOTAL BAND (MHz)
			(loss > 10 dB) at MHz	(loss > 20 dB) at MHz	
PIF-60+	60	50-70	14 & 240	3.8 & 400	DC-500

typical frequency response

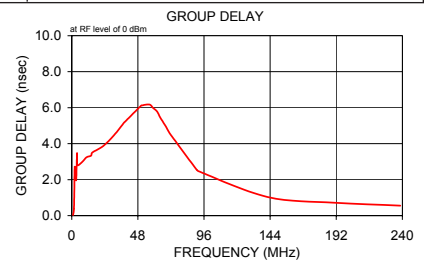
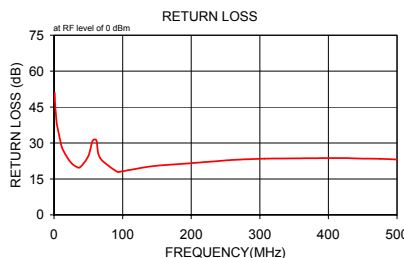


electrical schematic



Typical Performance Data

Frequency (MHz)	Insertion Loss (dB)		Return Loss (dB)	Frequency (MHz)	Group Delay (nsec)
	\bar{x}	σ			
1.0	35.25	0.1	50.9	1.0	0.036
1.6	31.45	0.1	46.7	1.6	0.385
2.1	28.84	0.1	43.8	2.1	2.704
2.7	26.81	0.1	41.8	2.7	2.564
3.2	25.18	0.1	40.0	3.2	1.978
3.8	23.80	0.1	38.6	3.8	3.449
4.0	23.37	0.1	37.9	3.9	2.820
10.7	14.83	0.1	29.0	7.3	2.963
14.0	12.40	0.1	26.6	10.7	3.244
20.0	9.15	0.1	23.6	14.0	3.331
26.0	6.66	0.1	21.4	15.0	3.511
32.0	4.65	0.1	20.2	22.8	3.863
38.0	3.00	0.1	19.9	30.5	4.455
50.0	0.75	0.1	24.5	38.2	5.190
56.4	0.27	0.1	31.0	38.9	5.236
61.9	0.26	0.1	31.0	50.4	6.121
67.3	0.54	0.0	23.7	51.3	6.127
92.0	3.08	0.1	18.0	54.0	6.168
94.0	3.30	0.1	17.9	56.9	6.165
142.7	7.76	0.1	20.3	58.9	6.001
191.3	11.04	0.1	21.4	62.0	5.775
240.0	13.71	0.2	22.5	64.2	5.461
260.0	14.71	0.2	22.9	67.6	5.045
306.7	17.09	0.2	23.5	70.0	4.715
353.3	19.45	0.3	23.6	71.2	4.566
400.0	22.02	0.5	23.7	90.7	2.549
425.0	23.50	0.6	23.7	92.3	2.464
450.0	25.09	0.6	23.5	142.1	1.039
475.0	26.76	0.8	23.4	190.5	0.715
500.0	28.43	0.9	23.1	238.5	0.552



Notes

- Performance and quality attributes and conditions not expressly stated in this specification document are intended to be excluded and do not form a part of this specification document.
- Electrical specifications and performance data contained in this specification document are based on Mini-Circuit's applicable established test performance criteria and measurement instructions.
- The parts covered by this specification document are subject to Mini-Circuit's standard limited warranty and terms and conditions (collectively, "Standard Terms"); Purchasers of this part are entitled to the rights and benefits contained therein. For a full statement of the Standard Terms and the exclusive rights and remedies thereunder, please visit Mini-Circuit's website at www.minicircuits.com/MCLStore/terms.jsp



www.minicircuits.com P.O. Box 350166, Brooklyn, NY 11235-0003 (718) 934-4500 sales@minicircuits.com

REV. C
M151107
PIF-60+
RAV
150924