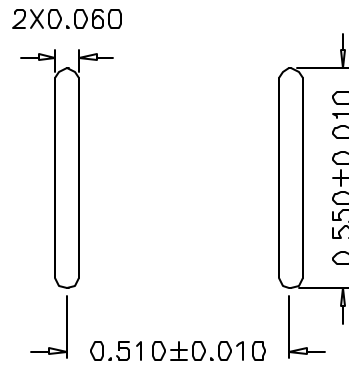
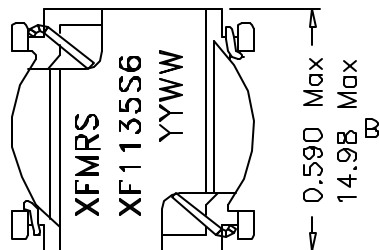
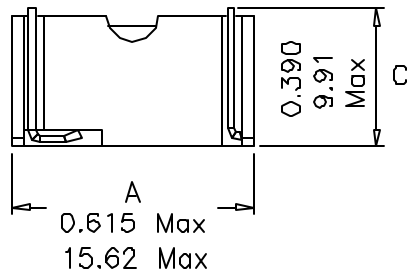
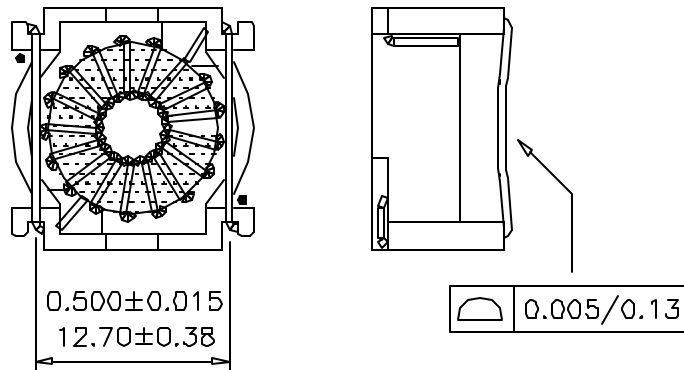


### 1. Mechanical Dimensions:



Suggested PCB Layout

### 2. Schematic:



### 3. Electrical Specifications: @25°C

OCL: 1134uH±15% @ 10KHz, 0.1V NO DC  
 OCL: 645uH ±15% @ 10KHz, 0.1V 0.74A  
 DC Resistance: 1.25 Ohms Max  
 ETop: 36.5V/uS

Notes:

1. Solderability: Leads shall meet MIL-STD-202, Method 208D for solderability.
2. Flammability: UL94V-0
3. ASTM oxygen index: > 28%
4. Insulation System: Class F 155°C. UL file E151556
5. Operating Temperature Range: All listed parameters are to be within tolerance from -40°C to +85°C
6. Storage Temperature Range: -55°C to +125°C
7. Aqueous wash compatible
8. SMD Lead Coplanarity: ±0.004"(0.102mm)
9. Moisture Sensitivity: Level 3
10. Electrical and mechanical specifications 100% tested
11. RoHS Compliant Component

DOC. REV: A/1

<b>XFMRS Inc</b> www.XFMRS.com		Title: Surface Mount Inductor	
UNLESS OTHERWISE SPECIFIED TOLERANCES: .xxx ±0.010 Dimensions in Inch/mm	P/N: XF1135S6	REV. A	
	DWN.	李清儿	Jan-25-05
	CHK.	孙小松	Jan-25-05
SHEET 1 OF 1	APP.	J Ng	Jan-25-05