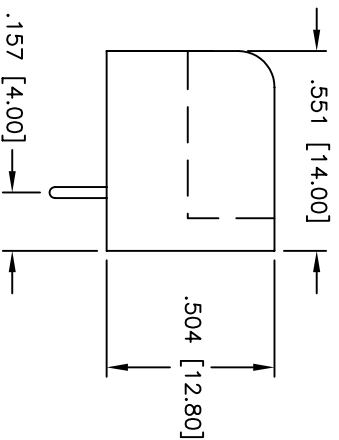
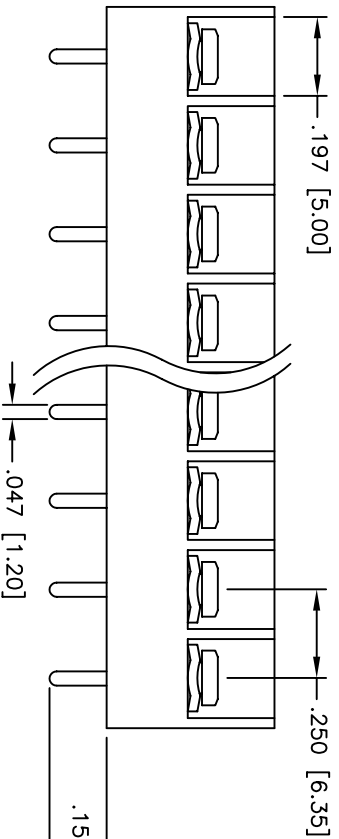
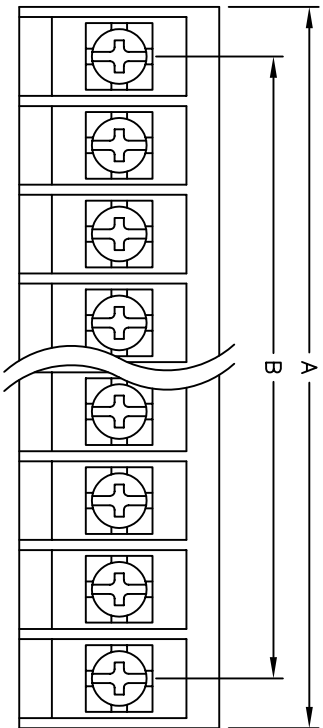


Rev	AWO #	Description	Date	Appr
-		RELEASED	6/7/05	

APPROVED: \_\_\_\_\_  
 DATE: \_\_\_\_\_ TITLE: \_\_\_\_\_



Positions: 2 thru 32  
 A = .250 [6.35] x No. of Positions + .051 [1.30]  
 B = .250 [6.35] x No. of Spaces

**SPECIFICATIONS:**  
 Material:  
 Insulator: PBT, rated UL 94V-0  
 Insulator color: Black  
 Plating:  
 Contacts: Brass, Tin plated  
 Screws: Steel, Nickel plated  
 Hardware: Brass, Tin plated  
 Electrical:  
 Operating voltage: 300 VAC max.  
 Current rating: 10 Amps max.  
 Contact resistance: 20 mohms max. initial  
 Insulation resistance: 500 Mohms min.  
 Dielectric withstanding voltage: 2,000 VAC for 1 minute  
 Mechanical:  
 Wire range: 22 - 16 AWG  
 Temperature Rating:  
 Operating temperature: -65°C to +125°C  
 Environmental:  
 Lead free, RoHS compliant  
 Recommended soldering temp: 230°C for 5 seconds



UNLESS OTHERWISE SPECIFIED ALL DIMENSIONS ARE INCHES [MM]	
TOLERANCES: EXCEPT AS NOTED	
INCHES	HOLDS
.X ± .10	ØX ± .10
.XX ± .020	ØXX ± .015
.XXX ± .015	ØXXX ± .010
APPROVALS	DATE
DRAWN	SS
CHECKED	
APPROVED	

**ADAM TECH**  
 909 Railway Avenue, Union, NJ 07083  
 Phone: 908-687-5000 Fax: 908-687-5710

TITLE: 250 [6.35] CLOSED SIDE BARRIER BLOCK  
 PART NO.: VERTICAL, PCB TAILS, BARRIER ENDS  
 TBB-XX-01-B

SIZE	REV.
X	
REF:	
SCALE:	NTS
SHEET	1 OF 1