

# Surface Mount Power Splitter/Combiner

## SYPS-3-12W+

3 Way-0° 50Ω 20 to 1200 MHz



CASE STYLE: AH202  
PRICE: \$ 9.95 ea. QTY (1-9)

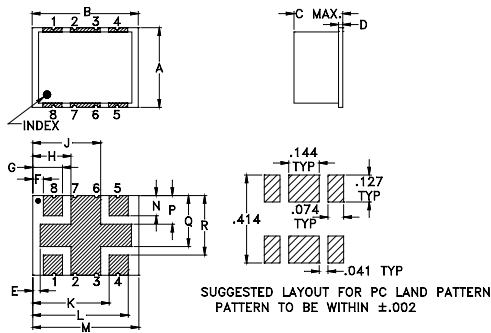
### Maximum Ratings

Operating Temperature	-40°C to 85°C
Storage Temperature	-55°C to 100°C
Power Input (as a splitter)	1W max.
Internal Dissipation	0.15W max.

### Pin Connections

SUM PORT	8
PORT 1	1
PORT 2	4
PORT 3	5
GROUND	2,3,6,7

### Outline Drawing



### Outline Dimensions (Inch)

A	B	C	D	E	F	G	H	
.375	.500	.25	.020	0.35	.050	.140	.180	
9.53	12.70	6.35	0.51	8.89	1.27	3.56	4.57	
J	K	L	M	N	P	Q	R	wt
.320	.360	.450	.320	.360	.135	.240	.280	grams
8.13	9.14	11.43	8.13	9.14	3.43	6.10	7.11	0.80

### Features

- low insertion loss 1.0 dB typ.
- wide frequency band, 20 to 1200 MHz, usable 5 to 1250 MHz
- low amplitude unbalance, 0.1 dB typ.

### Applications

- VHF/UHF CATV
- cellular

+ RoHS compliant in accordance with EU Directive (2002/95/EC)

The +suffix has been added in order to identify RoHS Compliance. There has been no change to the model's material, form, fit, or function. See our web site for RoHS Compliance methodologies and qualifications.

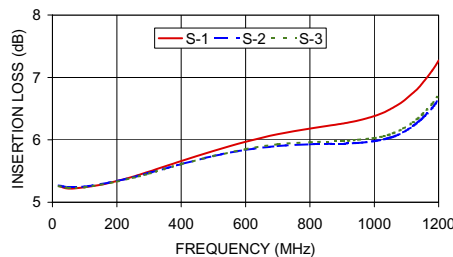
### Splitter Electrical Specifications

FREQUENCY (MHz)	ISOLATION (dB)		INSERTION LOSS (dB) ABOVE 4.8 dB		PHASE UNBALANCE (deg.)	AMPLITUDE UNBALANCE (dB)
	Typ.	Min.	Typ.	Max.	Max.	Max.
20-500	24	16	0.7	1.4	2	0.3
500-1000	20	15	1.2	2.0	4	0.7
1000-1200	24	16	1.7	2.9	6	0.9

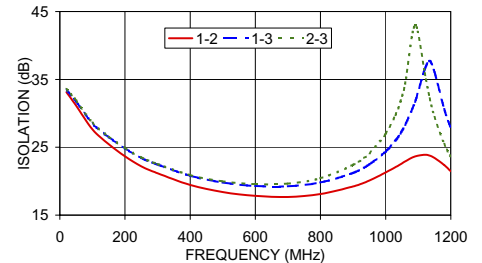
### Typical Performance Data

FREQ. (MHz)	INSERTION LOSS (dB)			AMPLITUDE UNBALANCE (dB)	ISOLATION (dB)			PHASE UNBALANCE (deg.)	VSWR			
	S-1	S-2	S-3		1-2	1-3	2-3		S	1	2	3
20.00	5.26	5.27	5.26	0.01	33.11	33.43	33.56	0.08	1.14	1.18	1.17	1.17
50.00	5.22	5.24	5.23	0.01	31.13	31.72	31.88	0.10	1.13	1.17	1.16	1.16
100.00	5.24	5.25	5.24	0.01	27.63	28.50	28.60	0.18	1.16	1.16	1.15	1.16
200.00	5.34	5.34	5.33	0.01	23.67	24.84	24.91	0.32	1.25	1.15	1.15	1.16
300.00	5.49	5.47	5.46	0.03	21.17	22.46	22.54	0.44	1.35	1.14	1.15	1.16
400.00	5.66	5.61	5.61	0.05	19.44	20.80	20.90	0.52	1.44	1.13	1.14	1.17
500.00	5.82	5.74	5.74	0.09	18.40	19.82	19.98	0.56	1.51	1.12	1.14	1.16
600.00	5.97	5.84	5.85	0.13	17.84	19.31	19.56	0.52	1.54	1.11	1.12	1.15
700.00	6.09	5.90	5.93	0.18	17.68	19.24	19.63	0.40	1.54	1.11	1.11	1.14
800.00	6.18	5.93	5.96	0.25	18.11	19.80	20.45	0.19	1.47	1.10	1.08	1.11
900.00	6.26	5.94	5.98	0.32	19.22	21.23	22.40	0.19	1.36	1.09	1.05	1.06
1000.00	6.38	5.98	6.03	0.41	21.28	24.38	27.02	0.71	1.18	1.09	1.04	1.04
1090.00	6.62	6.12	6.18	0.50	23.65	31.70	42.96	1.40	1.04	1.08	1.08	1.11
1150.00	6.91	6.35	6.41	0.56	23.44	36.09	29.45	1.96	1.20	1.08	1.13	1.18
1200.00	7.27	6.65	6.72	0.62	21.47	27.81	23.54	2.56	1.39	1.08	1.17	1.25

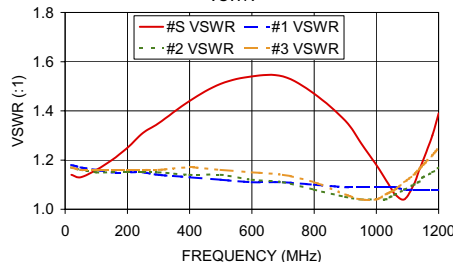
SYPS-3-12W  
INSERTION LOSS



SYPS-3-12W  
ISOLATION



SYPS-3-12W  
VSWR



### electrical schematic

