



SUPER FAST RECTIFIERS

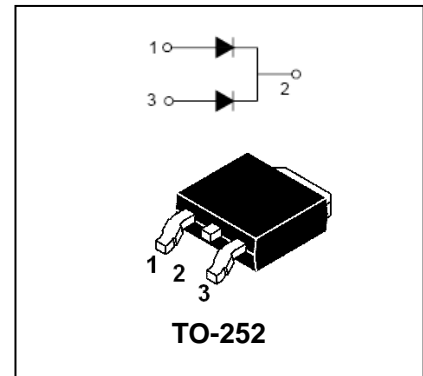
MUR1020DC-MUR1060DC

FEATURES

- Low cost.
- Low leakage.
- Low forward voltage drop.
- High currnt capability.
- Easily cleaned with Alcohol,Isopropanol and similar solvents.
- The plastic material carries U/L recognition 94V-0.



Lead-free



MAXIMUM RATING operating temperature range applies unless otherwise specified

Symbol	Parameter	MUR 1020DC	MUR 1030DC	MUR 1040DC	MUR 1060DC	Unit
V _{RRM}	Recurrent Peak Reverse Voltage	200	300	400	600	V
V _{RMS}	RMS Voltage	140	210	280	420	V
V _{DC}	DC Blocking Voltage	200	300	400	600	V
I _{F(AV)}	Average Forward Rectified Current @T _A =100°C	10				A
I _{FSM}	Peak Forward Surge Current 8.3ms Single Half Sine-wave Superimosed on Rated Load	60				A
T _J T _{stg}	Operating Junction and Storage Temperature Range	-55 to +150				°C

ELECTRICAL CHARACTERISTICS@ Ta=25°C unless otherwise specified

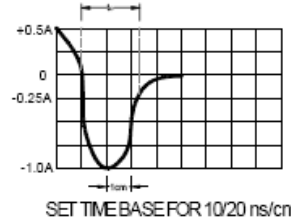
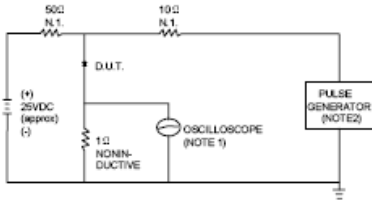
Parameter	Symbol	Test conditions	MAX				UNIT
			MUR 1020DC	MUR 1030DC	MUR 1040DC	MUR 1060DC	
Forward Voltage	V _F	I _F =5A	0.975	1.3	1.3	1.5	V
Reverse Current	I _R	V _R =V _{RRM} , T _A =25°C V _R =V _{RRM} , T _A =150°C	5.0 250	10 500			µA
Reverse Recover Time	t _{rr}	I _F =0.5A, I _R =1A, I _{rr} =0.25A	25	50			ns

SUPER FAST RECTIFIERS

MUR1020DC-MUR1060DC

TYPICAL CHARACTERISTICS @ Ta=25°C unless otherwise specified

FIG.1 -- TEST CIRCUIT DIAGRAM AND REVERSE RECOVERY TIME CHARACTERISTIC



NOTES: 1. RISE TIME = 7ns MAX INPUT IMPEDANCE = 1MΩ, 22pF.
2. RISE TIME = 10ns MAX SOURCE IMPEDANCE = 50 Ω.

FIG.2 – TYPICAL FORWARD CHARACTERISTIC

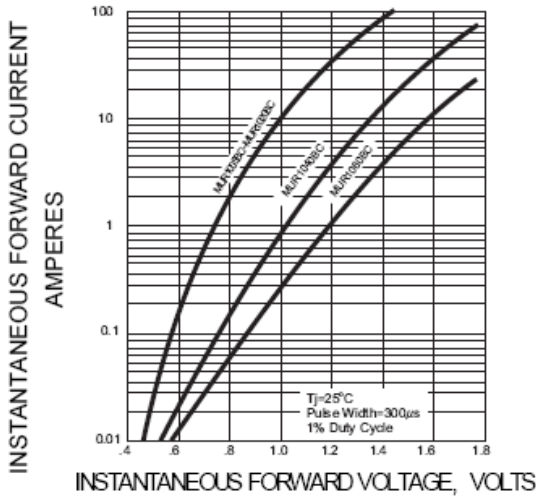


FIG.3 – PEAK FORWARD SURGE CURRENT

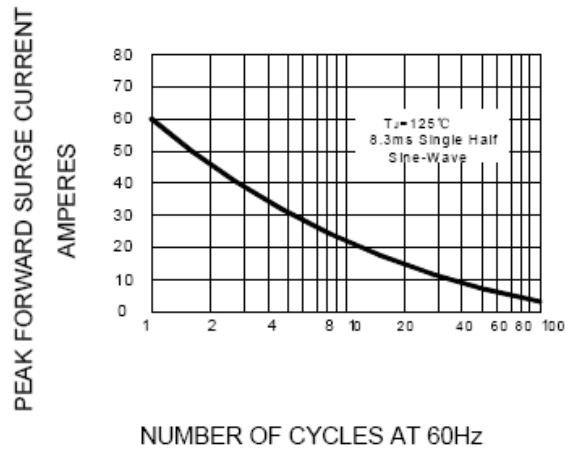
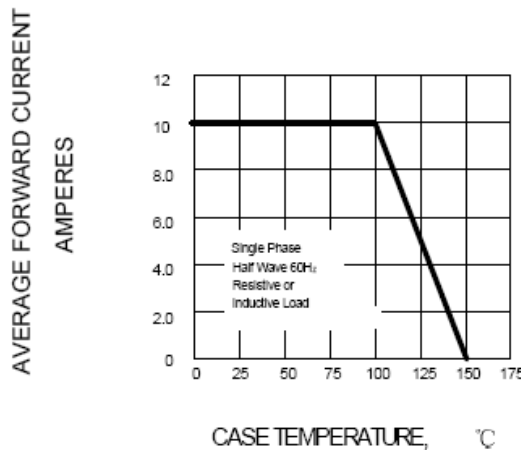


FIG.4-FORWARD DERATING CURVE





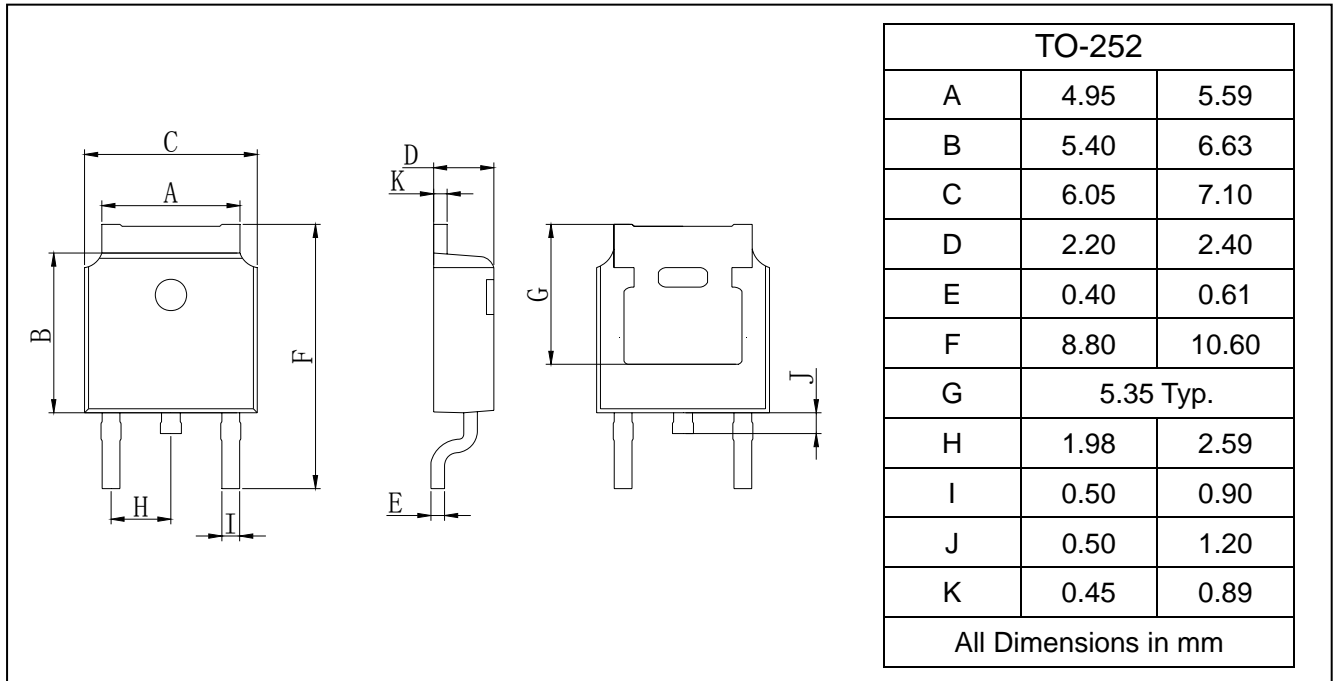
SUPER FAST RECTIFIERS

MUR1020DC-MUR1060DC

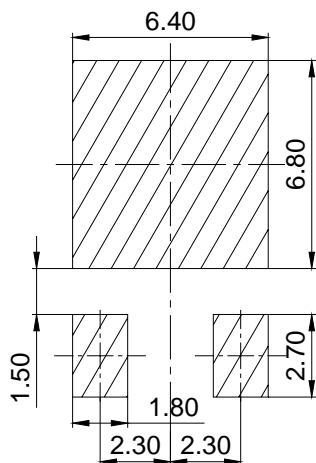
PACKAGE OUTLINE

Plastic surface mounted package

TO-252



SOLDERING FOOTPRINT



Unit:mm

PACKAGE INFORMATION

Device	Package	Shipping
MUR1020DC-MUR1060DC	TO-252	80PCS/Tube
		2500PCS/Tape&Reel