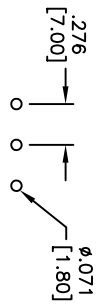
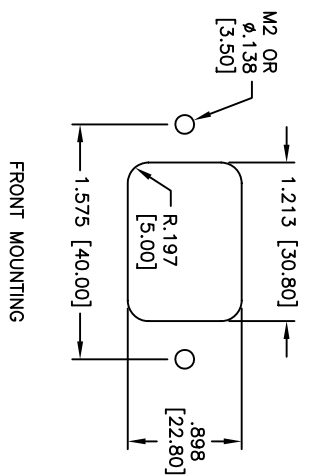
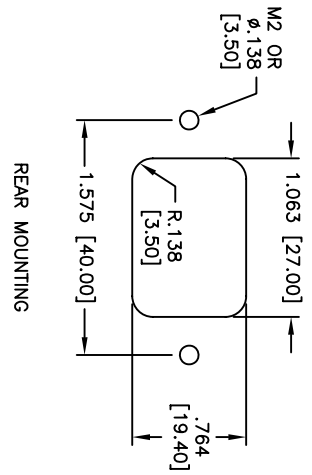
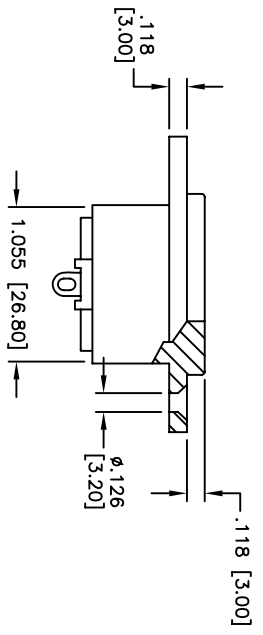
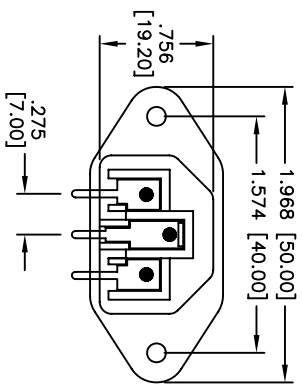
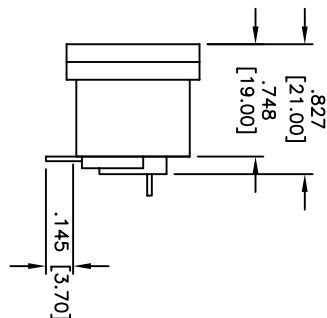
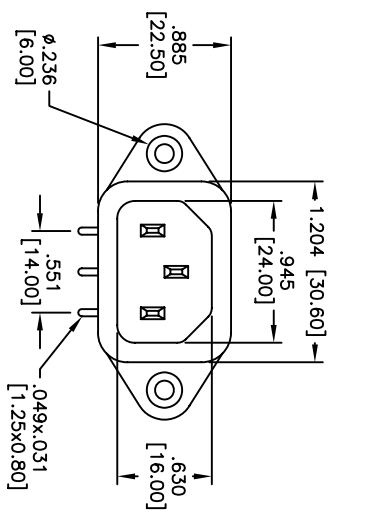


Rev	AWO #	Description	Date	Appr
-		RELEASED	7/10/07	

APPROVED: \_\_\_\_\_  
 DATE: \_\_\_\_\_ TITLE: \_\_\_\_\_



RECOMMENDED  
PCB LAYOUT

**SPECIFICATIONS:**  
 Material: Insulator: Nylon 66, glass reinforced, rated UL 94V-0  
 Insulator color: Black  
 Contacts: Brass  
 Plating: Nickel over Copper underplate overall  
 PCB pins: Tin over Copper underplate  
 Electrical:  
 Operating voltage: 250 VAC  
 Current rating: UL & CSA: 15 Amps max  
 VDE: 10 Amps max  
 Insulation resistance: 100 Mohms min @ 500 VDC  
 Dielectric withstanding voltage: 2,000 VAC for 1 minute  
 Temperature Rating:  
 Operating temperature: -25°C to +70°C  
 Environmental:  
 Lead free, RoHS compliant  
 Recommended soldering temp: 235°C for 5 seconds

UNLESS OTHERWISE SPECIFIED  
 ALL DIMENSIONS ARE INCHES [MM]  
 TOLERANCES: EXCEPT AS NOTED

INCHES	HOLES
.X ± .10	Ø.X ± .10
.XX ± .020	Ø.XX ± .015
.XXX ± .015	Ø.XXX ± .010

APPROVALS

DATE	DATE
SS	7/10/07

**ADAM TECH**  
 909 Rahway Avenue, Union, NJ 07083  
 Phone: 908-687-5000 Fax: 908-687-5710

TITLE: IEC MALE INLET, FLANGED PANEL MOUNT  
 RIGHT ANGLE, PCB TAILS

DRAWN	CHECKED	APPROVED	SIZE	PART NO.	SCALE	SHEET	REV.
			X	IEC-A-4	NTS	1 OF 1	

