

Low-profile tilting stick controller with excellent operating feel



■ Typical Specifications

Items	Specifications
Rated power	0.025W
Maximum operating voltage	5V DC
Operating angle	One side 15.5° ±3.4°
Operating force	0.43±0.25N
Operating life	1,000,000 cycles

■ Product Line

Product No.	Lever return mechanism	Center-push	Total resistance (kΩ)	Resistance taper	Minimum order unit (pcs.)	
					Japan	Export
RKJXY1000006	With	Without	2	B	2,000	2,000

■ Packing Specifications

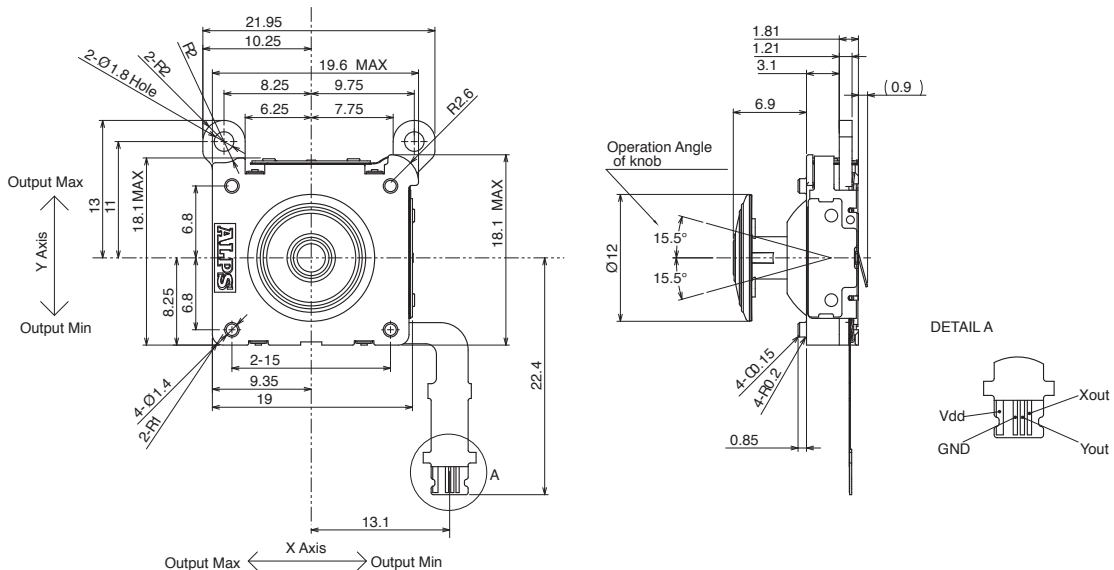
Tray

Number of packages (pcs.)		Export package measurements (mm)
1 case / Japan	1 case / export packing	
2,000	2,000	360×540×230

■ Dimensions

Unit:mm


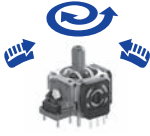






Style



Multi Control Devices
Variable Resistor Type
Switch Type

Multi Control Devices

List of Varieties

Type		Variable resistor type			
Series		RKJXK	RKJXV	RKJXY	RKJXU
Photo					
Dimensions (typical value) (mm)	W	20.7	17.8	19.6	18.6
	D	25.4	21.3	18.1	24.3
	H	12.9	11.2	4.9	5.2
Number of operating shafts		Single-shaft			
Shaft material		Metal		Resin	
Directional resolution		Continuous			
Directional operating feeling (tactile feeling)		Without			
Lever return mechanism		With / Without		With	
Center-push switch		With / Without			Without
Encoder		Without			
Operating temperature range		-10°C to +70°C			
Operating life	Directional operation	100,000 cycles	2,000,000 cycles	1,000,000 cycles	2,000,000 cycles
	Center-push	100,000 cycles	500,000 cycles	—	—
Automotive use		—			
Life cycle (availability)					
Electrical performance	Insulation resistance	100MΩ min. 250V DC		—	—
	Voltage proof	250V AC for 1 minute		—	—
	Slider noise	300mV p-p max. by JIS method			
Mechanical performance	Directional operating force	8mNm max. Without Lever return mechanism 6±4mNm With Lever return mechanism	14±10mN·m	0.43±0.25N	0.73±0.3N
	Push operating force	5.2±2.6N	7.4±3N	—	—
	Lever return precision	±5°			±0.1mm
	Actuator strength	Push / pull directions	50N min. (Push/Pull)	98N min. (Push), 50N min. (Pull)	100N min. (Push), 49N min. (Pull)
Operating direction		0.3N·m	—	50N	
Environmental performance	Cold	-30°C 96h			
	Dry heat	80°C 96h			
	Damp heat	60°C, 90 to 95%RH 96h			
Page		437		440	441

Variable Resistor Type Multi Control Devices Soldering Conditions	442
Variable Resistor Type Multi Control Devices Cautions	442