

ATLANTIC VERSION TERMINATOR INTERFACE ADAPTER	PART NUMBER	REVISION	DESCRIPTION	FEED TYPE	APPLICATOR STYLE CONVERSION CHART						
					CONVERT TO	PART NUMBERS REQUIRED					
	2151045-1	E	FINE CRIMP HEIGHT ADJUST	MECHANICAL	PNEUMATIC FEED	2119950-1	1338685-1	5-18022-5	2119641-1	2119799-1	2063440-1
					SERVO LATCH PLATE	2119951-1	-	8-2151045-5	1901094-3	-	2168400-6 (QUANTITY 2)
					SMART APPLICATOR	2161326-1	-	8-2151045-4	-	-	-
	2151045-2	E	FINE CRIMP HEIGHT ADJUST	PNEUMATIC	MECHANICAL FEED	2119949-1	1338685-1	5-18022-5	2119653-1	-	-
					SERVO LATCH PLATE	2119951-1	-	8-2151045-5	1901094-3	-	2168400-6 (QUANTITY 2)
					SMART APPLICATOR	2161326-1	-	8-2151045-4	-	-	-
	2151045-5	E	FINE CRIMP HEIGHT ADJUST	SERVO LATCH PLATE	MECHANICAL FEED	2119949-1	1338685-1	5-18022-5	2119653-1	-	-
PNEUMATIC FEED					2119950-1	1338685-1	5-18022-5	2119641-1	2119799-1	2063440-1	
2151045-6	E	NON-CRIMP HEIGHT ADJUST	SERVO LATCH PLATE	-	-	-	-	-	-	-	
				-	-	-	-	-	-	-	
2151045-7	E	FINE CRIMP HEIGHT ADJUST	NONE	-	-	-	-	-	-	-	
				-	-	-	-	-	-	-	
7-2151045-7	A	CRIMP TOOLING KIT	-	-	-	-	-	-	-	-	

APPLICATOR DATA		
CRIMP	SIZE	TYPE
WIRE	1.57 mm [.062]	F
INSUL	2.29 mm [.090]	O

APPLICATOR INSTRUCTIONS 408-10389

TERMINAL DATA: TE TERMINAL		TE CRIMP SPECIFICATION	
TERMINAL NAME: MICRO POWER QUADLOK SOCKET CONTACT			
WIRE STRIP LENGTH		INSULATION DIAMETER RANGE	
3.20-3.80 mm [.126-.150 IN]		Ø1.20-1.60 mm [.047-.063 IN]	
TERMINAL APPLICATION SPECIFICATION	114-18141	-	-
TERMINALS APPLIED			
TE TERMINAL	TE TERMINAL	TE TERMINAL	TE TERMINAL
968678-2	968679-5	1-968679-5	
968679-2	968679-6	2-968679-5	

WIRE SIZE	CRIMP HEIGHT mm [INCH]	CRIMP HEIGHT REFERENCE SETTING
0.50mm2	1.15+/-0.03 [.045+/- .001]	5.6
0.35mm2	1.08+/-0.03 [.043+/- .001]	6.3

- RECOMMENDED SPARE PARTS
- GREASE BEARING SURFACES LIGHTLY
- 3. LUBRICATE DAILY PER THE APPLICATOR INSTRUCTION SHEET SUPPLIED WITH THE APPLICATOR.
- APPLICATOR SPECIFIC DATA TO BE ENTERED INTO BLANK MEMORY CHIP AT ASSEMBLY. SEE BELOW FOR PART NUMBER:
 MECHANICAL FEED WITH "SMART APPLICATOR" CONVERSION: 8-2151045-4
 PNEUMATIC FEED WITH "SMART APPLICATOR" CONVERSION: 8-2151045-4
 SERVO FEED WITH "FINE CRIMP HEIGHT ADJUST": 8-2151045-5
 SERVO FEED WITH "NON-CRIMP HEIGHT ADJUST": 8-2151045-6
- 5. ADJUSTMENT OF THE STRIPPER MAY BE REQUIRED WHEN MOVING THE APPLICATOR BETWEEN BENCH AND LEADMAKER APPLICATIONS.
- APPLY PART NUMBER 1-23419-5 LOCTITE TO THREADS OF ITEMS 62. APPLY PART NUMBER 2-23419-6 LOCTITE FOR THREADS OF ITEM 242. FOR -6 ONLY APPLY PART NUMBER 1-23419-5 LOCTITE TO THREADS OF ITEM 37.
- GREASE THREADS, GROOVE AND O-RING ON ITEMS 35 & 252.
- MAGNET, ITEM 166 MUST BE ORIENTED CORRECTLY IN ORDER TO PROPERLY ACTUATE THE COUNTER.
- CRIMP HEIGHT REFERENCE SETTING WAS THE SETTING USED WHEN THE APPLICATOR WAS QUALIFIED AT THE FACTORY. ADJUSTMENT MAY BE NECESSARY WHEN RUNNING APPLICATOR IN THE FIELD.
- SPARE FEED CAM STORAGE LOCATION REFER TO INSTRUCTION SHEET FOR ADDITIONAL INFORMATION.
- TO CONVERT THE APPLICATOR TO A NON-CARRIER CUTTING STYLE, REMOVE ITEM 13 AND ATTACH TO THE LOCATION ON THE BACK SIDE OF THE HOUSING. REFER TO INSTRUCTION SHEET FOR ADDITIONAL INFORMATION.
- WHEN ASSEMBLING -6 NON-CRIMP HEIGHT ADJUST APPLICATOR USE SHIM PACK 2119957-2 TO ALIGN APPLICATOR'S MAXIMUM WIRE CRIMP HEIGHT AT NORMAL TERMINATOR SHUT HEIGHT
- WHEN RUNNING TERMINAL 968678 MOVE ITEM 7 BETWEEN ITEM 44 OR ITEM 245 AND ITEM 18.
- WHEN RUNNING TERMINAL 968679 MOVE ITEM 261 BETWEEN ITEM 44 OR ITEM 245 AND ITEM 18.

***WARNING**
 ON INSTALLATION, SET WIRE DISC, ITEM 40 TO LARGEST WIRE SIZE SETTING. USE OF SETTINGS BELOW MINIMUM REQUIRED CRIMP HEIGHT SETTING WILL CAUSE DAMAGE TO CRIMP TOOLING.

	-	1	1	1	1	1	1	6-240641-5	SPACER	261
	-	-	1	-	-	-	-	2119957-2	APPLICATOR SHIM PACK	260
	-	1	-	1	1	1	1	8-21084-0	O-RING, .676 ID, .070 DIA. MAT.	252
	-	-	-	-	1	-	-	2119640-1	PUSH ROD, AIR FEED	250
	-77	-7	-6	-5	-2	-1		PART NO	DESCRIPTION	ITEM NO

ATLANTIC VERSION
 Shown on sheets 1 of 4 & 2 of 4
 (Pacific version shown on sheets 3 of 4 & 4 of 4)

SET UP GAUGE
2119599-1

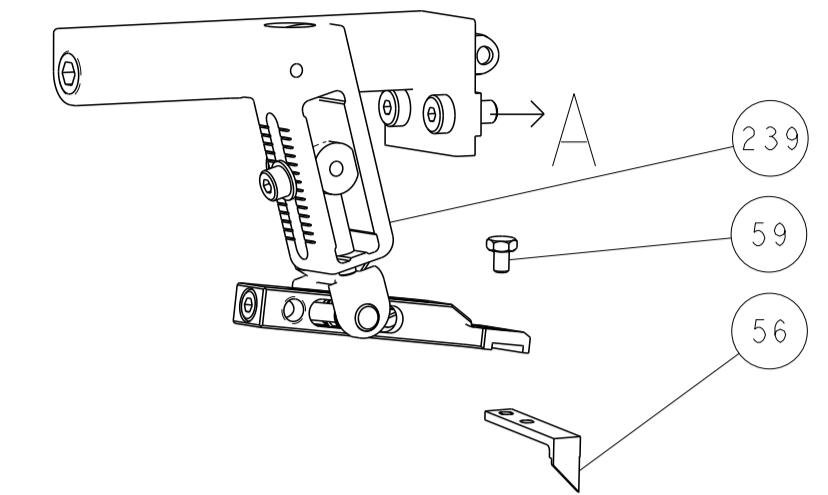
REVISIONS				
P	LTN	DESCRIPTION	DATE	OWN
B		ECR-12-012346	10JUL2012	XZ GB
C		ECR-13-007007	25APR2013	CC TE
D		ECR-14-002232	14FEB2014	XZ GB
E		ECR-16-012668	6SEP2016	TB TE

-	-	-	-	1	-	1803259-1	BUSHING, FLANGED	249	
-	-	-	-	1	-	2119641-1	FEED CAM, AIR FEED	248	
-	1	-	1	1	1	2119798-1	DETENT PIN	247	
-	1	-	1	1	1	1-22279-3	SPRING, COMPRESSION	246	
-	-	1	-	-	-	2119758-1	RAM, AMP STYLE, SIDE FEED, NON-ADJ.	245	
-	1	1	1	1	1	2119082-9	CAM, SNAIL, INSULATION ADJUSTMENT	244	
-	1	1	1	1	1	2079764-1	WASHER, WAVE SPRING, CREST-TO-CREST	243	
-	1	1	1	1	1	2119083-1	RETAINER, INSULATION DIAL	242	
-	1	1	1	1	1	7-18023-7	SCR, SKT HD CAP M3 X 4.0	241	
-	-	2	2	-	-	2168400-6	SHCS, LOW HEAD, RoHS, M5 X 16	240	
-	-	-	-	-	1	2119580-1	MECHANICAL FEED ASSEMBLY	239	
-	-	-	-	-	1	2063440-1	AIR FEED MODULE	238	
-	-	1	1	-	-	2119740-2	TAG, IDENTIFICATION	213	
-	-	1	1	-	-	1901094-3	SPACER, FEEDER	198	
-	-	-	-	-	2	21045-3	RING, RETAIN, EXTERN, 3/16 CRESCENT	172	
-	1	1	1	1	1	994969-1	MAGNET, RARE EARTH HIGH ENERGY	166	
-	REF	REF	REF	REF	REF	994970-2	COUNTER, MAGNETIC	164	
-	-	-	-	-	1	240638-1	SPRING, FEED FINGER	163	
-	-	-	-	-	1	3-23627-7	PIN, RETAIN, GRVD, 3/16 X .854	137	
-	-	-	-	-	1	2119799-1	HOLDER, FEED FINGER, AF	136	
-	-	REF	REF	-	-	SEE NOTE 4	MEMORY CHIP, PROGRAMMED	135	
-	-	1	1	-	-	1633743-1	SERVO FEED LATCH ASM	133	
-	1	1	1	1	1	1-18028-2	WASHER, FLAT, REG M4	119	
-	-	REF	REF	-	-	2119944-1	FEED FINGER ASSEMBLY, SF	117	
-	1	1	1	1	1	455888-3	SPACER, CRIMPER	82	
-	2	2	2	2	2	1-2079383-0	SCR, BHSC, RoHS (M3 X 6)	79	
-	1	1	1	1	1	1633782-2	FENCE	78	
-	1	1	1	1	1	2119956-1	DOCUMENTATION PACKAGE	71	
-	1	-	-	-	1	2119740-1	TAG, IDENTIFICATION	67	
-	2	2	2	2	2	2168078-1	SCREW, DRIVE, RH, RoHS, 2 x .188	66	
-	1	-	-	-	1	2119793-1	LIMITER, ADJUSTMENT BOLT	63	
-	3	-	3	3	3	992763-5	SCR, SET, SOC, CONE POINT, M3 x 4.0	62	
-	1	1	1	1	1	2079383-4	SCR, BHSC, RoHS (M4 X 8)	60	
-	-	-	-	-	1	5-18022-5	SCR, HEX HD CAP, M4 X 6.0	59	
-	-	-	-	-	1	1338685-1	PAWL, FEED	56	
-	4	4	4	4	4	2168400-1	SHCS, LOW HEAD, RoHS, M4 X 12	54	
-	2	2	2	2	2	2-21680083-6	SCR, SKT HD CAP, RoHS, M4 X 18	53	
-	-	-	-	-	1	2	18023-9	SCR, SKT HD CAP M4 X 6.0	49
-	-	-	-	-	-	1	2119652-1	FEED CAM, PRE FEED	48
-	-	-	-	-	-	1	2119653-1	FEED CAM, POST FEED	47
-	1	1	1	1	1	2119656-9	APPLICATOR BASIC ASSEMBLY, SF	46	
-	1	-	-	-	-	1	2119370-1	RAM, AMP STYLE, SIDE FEED	44
-	1	1	1	1	1	2079383-7	SCR, BHSC, RoHS (M8 X 25)	41	
-	1	-	-	-	-	1	2119645-1	DISC, NUMBERED FA WIRE ADJUSTMENT	40
-	1	-	-	-	-	1	2119957-1	APPLICATOR SHIM PACK	39
-	1	1	1	1	1	2119644-1	RAM WASHER, PRECISION	38	
-	1	1	1	1	1	2119085-1	FA HEAD, ATLANTIC STYLE	37	
-	1	-	-	-	-	1	2119092-1	BOLT, ADJUSTMENT	35
-	1	1	1	1	1	1-1752356-3	SUPPORT, TERMINAL	34	
-	2	2	2	2	2	2079383-5	SCR, BHSC, RoHS (M4 X 20)	33	
-	1	1	1	1	1	2161328-1	HEX HEAD, FLANGED, M5 x 8mm LONG	32	
-	1	1	1	1	1	1320908-3	SPACER, STRIP GUIDE	30	
-	1	1	1	1	1	2119959-2	ASSEMBLY, STRIP GUIDE	29	
-	1	1	1	1	1	1-455888-0	SPACER, CRIMPER	28	
-	1	1	1	1	1	1320928-6	STRIP GUIDE	24	
-	1	1	1	1	1	2168083-2	SCR, SKT HD CAP, RoHS, M4 X 8.0	21	
-	1	1	1	1	1	1-18028-2	WASHER, FLAT, REG M4	20	
-	1	1	1	1	1	2119533-1	STRIPPER, SIDE FEED	19	
-	1	1	1	1	1	879657-2	HOLD DOWN	18	
-	1	1	1	1	1	2119806-1	INSERT, SHEAR	13	
-	1	1	1	1	1	3-22280-3	SPRING, COMPRESSION	12	
-	1	1	1	1	1	1-356885-4	STOP, SHEAR	11	
-	1	1	1	1	1	2119805-1	SHEAR HOLDER, FRONT	10	
-	1	1	1	1	1	462006-6	FLOATING SHEAR, FRONT	9	
-	1	1	1	1	1	5-1333202-3	ANVIL, COMBINATION	8	
-	1	1	1	1	1	2-240641-5	SPACER	7	
-	1	1	1	1	1	2119757-8	DEPRESSOR, SHEAR	5	
-	1	1	1	1	1	238011-9	BLOCK, CRIMPER SPACER	4	
-	1	1	1	1	1	1-2119784-8	CRIMPER, INSULATION O PREMIUM	3	
-	1	1	1	1	1	455888-5	SPACER, CRIMPER	2	
-	1	1	1	1	1	9-657555-1	CRIMPER, WIRE PREMIUM	1	
-77	-7	-6	-5	-2	-1		PART NO	DESCRIPTION	ITEM NO

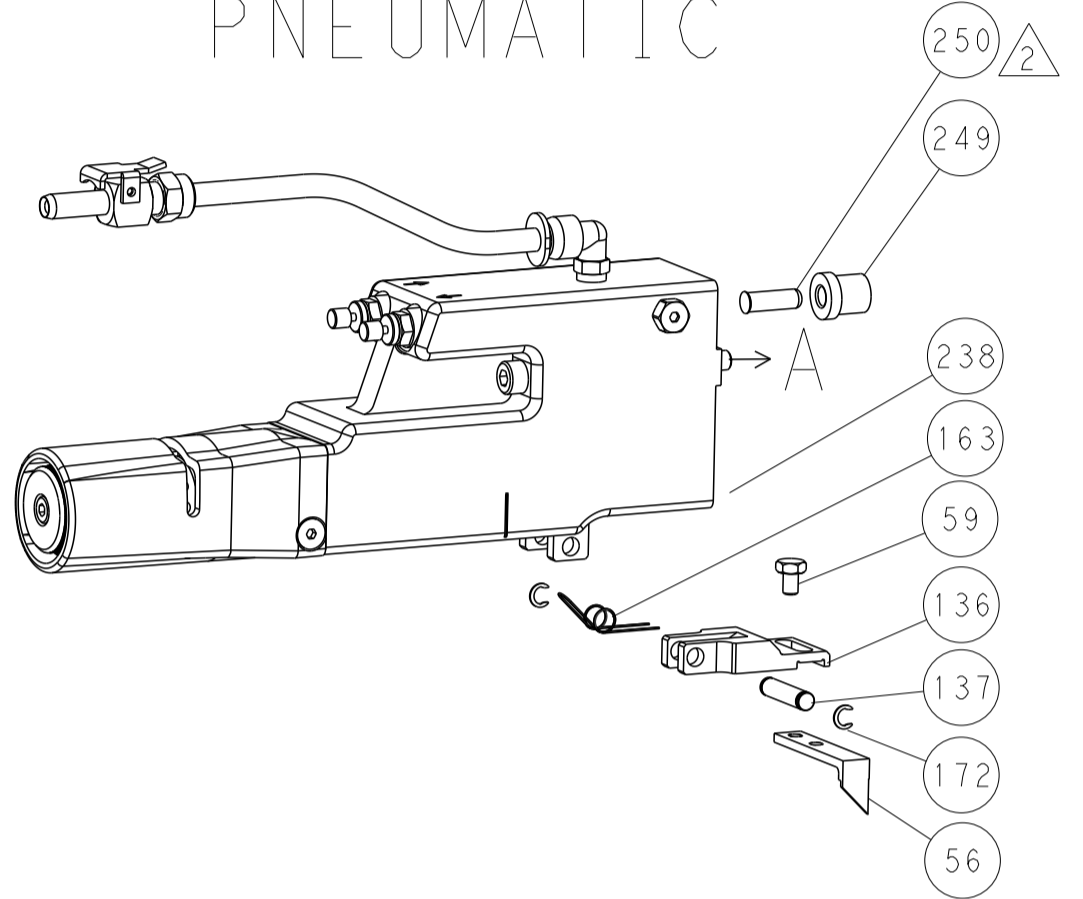
THIS DRAWING IS A CONTROLLED DOCUMENT.		OWN Y. YIN	23SEP2011		TE Connectivity	
DIMENSIONS:		CHK G. BAILEY	23SEP2011		NAME Ocean Side Feed Applicator	RESTRICTED TO
TOLERANCES UNLESS OTHERWISE SPECIFIED:		APVD S. XI	23SEP2011			
mm		PRODUCT SPEC			SIZE	CAGE CODE
0 PLC ±		APPLICATION SPEC		A1	①=2151045	
1 PLC ±		WEIGHT		CUSTOMER ACCESSIBLE PRODUCTION DRAWING		
2 PLC ±		SCALE		1:2		
3 PLC ±		SHEET		1 of 4		
4 PLC ±		REV		E		
5 PLC ±		DRAWING NO		-		
6 PLC ±		SCALE		1:2		
ANGLES		SHEET		1 of 4		
FINISH		REV		E		

REVISIONS				
P	LTN	DESCRIPTION	DATE	APVD
-	-	SEE SHEET 1	-	-

FEED TYPE MECHANICAL



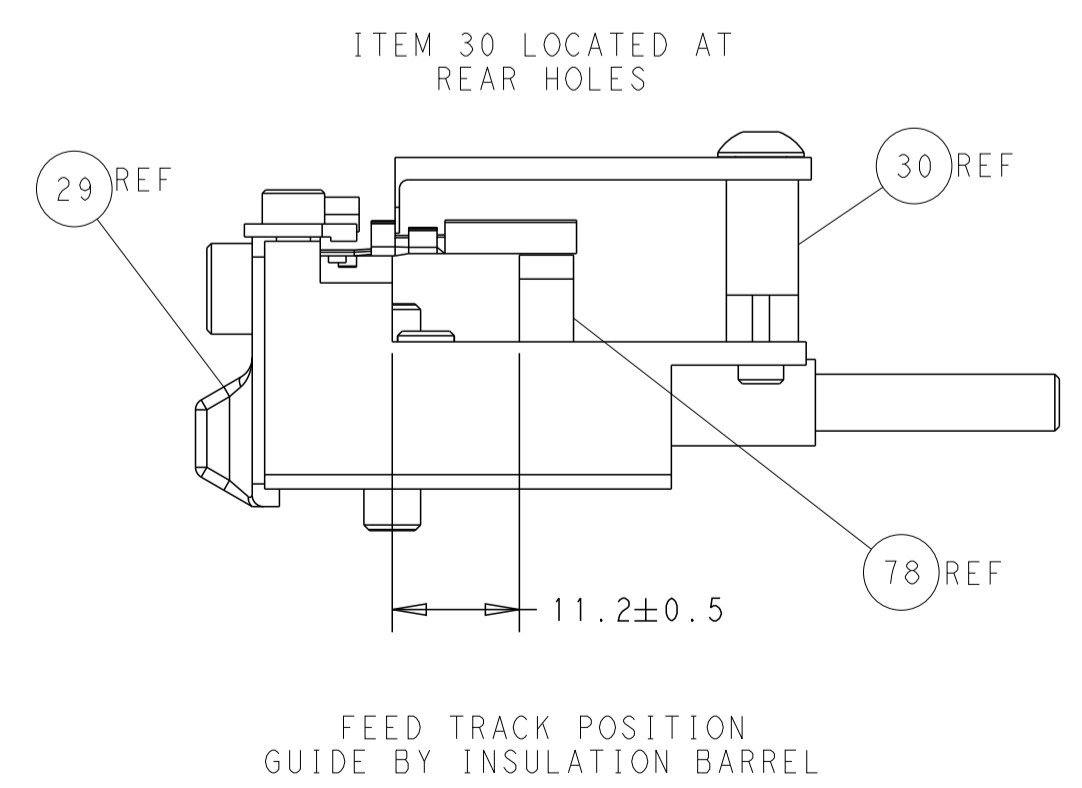
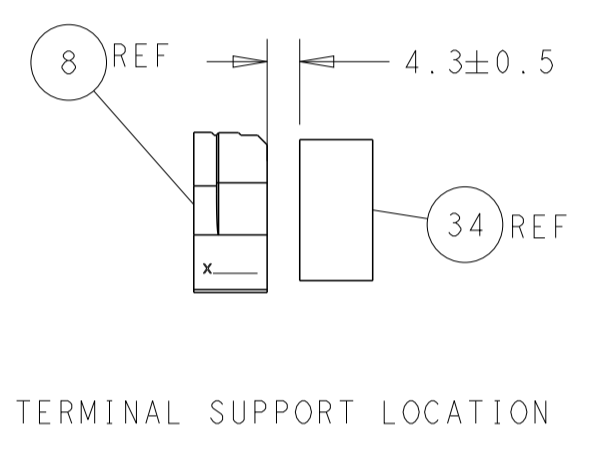
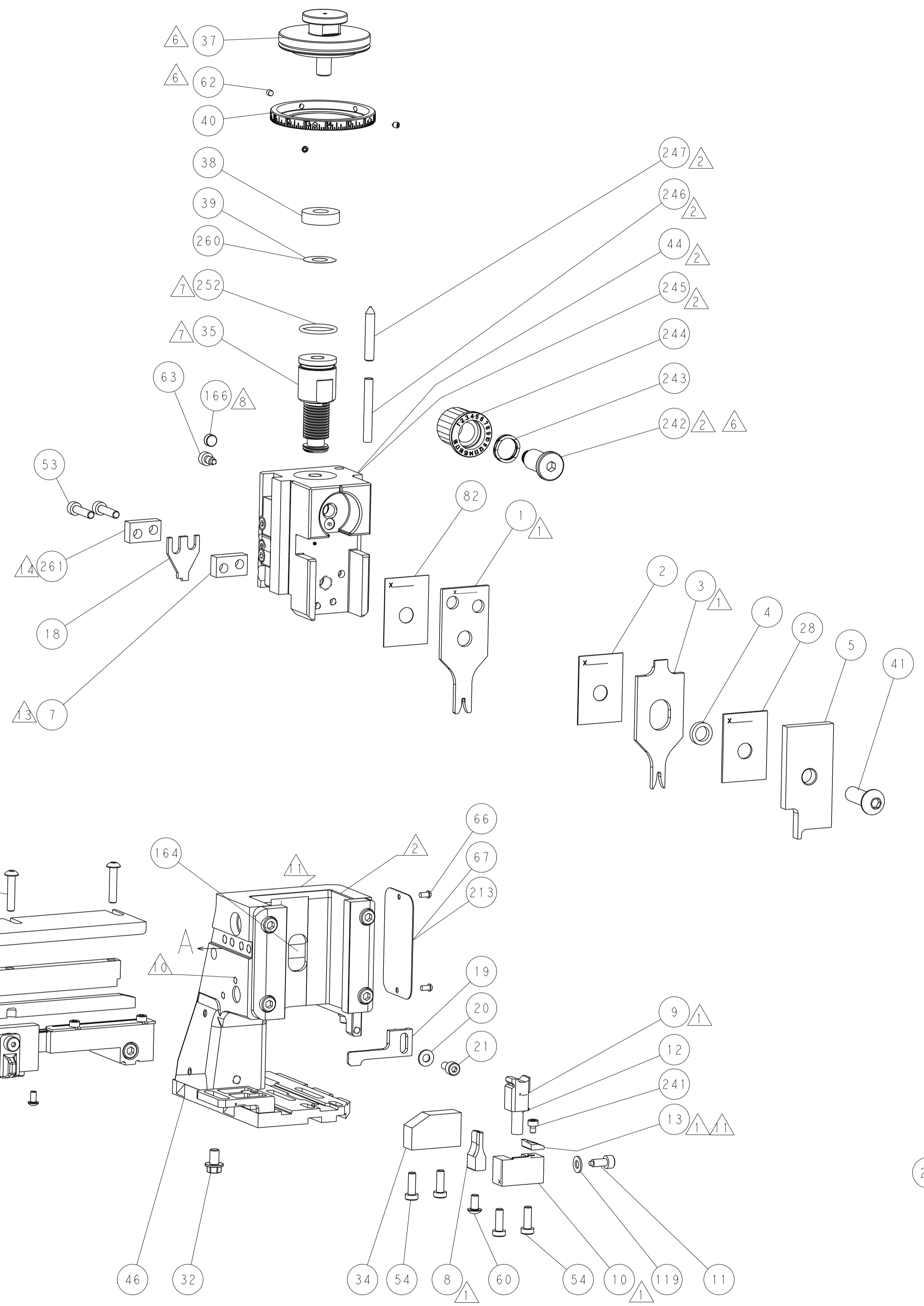
PNEUMATIC



SERVO LATCH PLATE



CAM POSITIONS



ATLANTIC VERSION
 Shown on sheets 1 of 4 & 2 of 4
 (Pacific version shown on sheets 3 of 4 & 4 of 4)

THIS DRAWING IS A CONTROLLED DOCUMENT.		OWN: Y. YIN 23SEP2011	TE Connectivity
DIMENSIONS: mm		CHK: G. BAILEY 23SEP2011	
TOLERANCES UNLESS OTHERWISE SPECIFIED:		APVD: S. XI 23SEP2011	NAME: Ocean Side Feed Applicator
0 PLC ± 1 PLC ± 2 PLC ± 3 PLC ± 4 PLC ± ANGLES ±		PRODUCT SPEC	SIZE: A1
MATERIAL:		APPLICATION SPEC	CAGE CODE: C=2151045
		WEIGHT	SCALE: 1:2
		CUSTOMER ACCESSIBLE PRODUCTION DRAWING	SHEET 2 OF 4
			REV E

THIS DRAWING IS UNPUBLISHED. RELEASED FOR PUBLICATION 2016
 COPYRIGHT 20 BY ALL RIGHTS RESERVED.

PACIFIC VERSION TERMINATOR INTERFACE ADAPTER	PART NUMBER	REVISION	DESCRIPTION	FEED TYPE	APPLICATOR STYLE CONVERSION CHART						
					CONVERT TO	PART NUMBERS REQUIRED					
	2-2151045-1	E	FINE CRIMP HEIGHT ADJUST	MECHANICAL	PNEUMATIC FEED	2119950-1	1338685-1	5-18022-5	2119641-2	2119799-1	2063440-1
					SERVO LATCH PLATE	2119951-1	-	8-2151045-5	1901094-3	-	2168400-6 (QUANTITY 2)
					SMART APPLICATOR	2161326-1	-	8-2151045-4	-	-	-
	2-2151045-2	E	FINE CRIMP HEIGHT ADJUST	PNEUMATIC	MECHANICAL FEED	2119949-1	1338685-1	5-18022-5	2119653-2	-	-
					SERVO LATCH PLATE	2119951-1	-	8-2151045-5	1901094-3	-	2168400-6 (QUANTITY 2)
					SMART APPLICATOR	2161326-1	-	8-2151045-4	-	-	-
	2-2151045-5	E	FINE CRIMP HEIGHT ADJUST	SERVO LATCH PLATE	MECHANICAL FEED	2119949-1	1338685-1	5-18022-5	2119653-2	-	-
					PNEUMATIC FEED	2119950-1	1338685-1	5-18022-5	2119641-2	2119799-1	2063440-1
	2-2151045-7	E	FINE CRIMP HEIGHT ADJUST	NONE	-	-	-	-	-	-	-
	7-2151045-7	A	CRIMP TOOLING KIT	-	-	-	-	-	-	-	-

APPLICATOR DATA		
CRIMP	SIZE	TYPE
WIRE	1.57 mm [.062]	F
INSUL	2.29 mm [.090]	O
APPLICATOR INSTRUCTIONS 408-10389		

TERMINAL DATA: TE TERMINAL		TE CRIMP SPECIFICATION	
TERMINAL NAME: MICRO POWER QUADLOK SOCKET CONTACT			
WIRE STRIP LENGTH		INSULATION DIAMETER RANGE	
3.20-3.80 mm [1.26-.150 IN]		Ø1.20-1.60 mm [.047-.063 IN]	
TERMINAL APPLICATION SPECIFICATION	114-18141	-	-
TERMINALS APPLIED			
TE TERMINAL	TE TERMINAL	TE TERMINAL	TE TERMINAL
968678-2	968679-5	1-968679-5	
968679-2	968679-6	2-968679-5	

WIRE SIZE	CRIMP HEIGHT mm [INCH]	CRIMP HEIGHT REFERENCE SETTING
0.50mm2	1.15+/-0.03 [.045+/-0.001]	5.6
0.35mm2	1.08+/-0.03 [.043+/-0.001]	6.3

- 1 RECOMMENDED SPARE PARTS
- 2 GREASE BEARING SURFACES LIGHTLY
- 3. LUBRICATE DAILY PER THE APPLICATOR INSTRUCTION SHEET SUPPLIED WITH THE APPLICATOR.
- 4 APPLICATOR SPECIFIC DATA TO BE ENTERED INTO BLANK MEMORY CHIP AT ASSEMBLY. SEE BELOW FOR PART NUMBER:
 MECHANICAL FEED WITH "SMART APPLICATOR" CONVERSION: 8-2151045-4
 PNEUMATIC FEED WITH "SMART APPLICATOR" CONVERSION: 8-2151045-4
 SERVO FEED WITH "FINE CRIMP HEIGHT ADJUST": 8-2151045-5
 SERVO FEED WITH "NON-CRIMP HEIGHT ADJUST": 8-2151045-6
- 5. ADJUSTMENT OF THE STRIPPER MAY BE REQUIRED WHEN MOVING THE APPLICATOR BETWEEN BENCH AND LEADMAKER APPLICATIONS.
- 6 APPLY PART NUMBER 1-23419-5 LOCTITE TO THREADS OF ITEM 62. APPLY PART NUMBER 2-23419-6 LOCTITE TO THREADS OF ITEM 242.
- 7 GREASE THREADS, GROOVE AND O-RING ON ITEMS 139 & 152.
- 8 MAGNET MUST BE ORIENTED CORRECTLY IN ORDER TO PROPERLY ACTUATE THE COUNTER.
- 9 CRIMP HEIGHT REFERENCE SETTING WAS THE SETTING USED WHEN THE APPLICATOR WAS QUALIFIED AT THE FACTORY. ADJUSTMENT MAY BE NECESSARY WHEN RUNNING APPLICATOR IN THE FIELD.
- 10 SPARE FEED CAM STORAGE LOCATION REFER TO INSTRUCTION SHEET FOR ADDITIONAL INFORMATION.
- 11 TO CONVERT THE APPLICATOR TO A NON-CARRIER CUTTING STYLE, REMOVE ITEM 13 AND ATTACH TO THE LOCATION ON BACK SIDE OF THE HOUSING. REFER TO INSTRUCTION SHEET FOR ADDITIONAL INFORMATION.
- 12 WHEN RUNNING TERMINAL 968678 MOVE ITEM 7 BETWEEN ITEM 44 OR ITEM 245 AND ITEM 18.
- 13 WHEN RUNNING TERMINAL 968679 MOVE ITEM 261 BETWEEN ITEM 44 OR ITEM 245 AND ITEM 18.

***WARNING**
 ON INSTALLATION, SET WIRE DISC, ITEM 40 TO LARGEST WIRE SIZE SETTING. USE OF SETTINGS BELOW MINIMUM REQUIRED CRIMP HEIGHT SETTING WILL CAUSE DAMAGE TO CRIMP TOOLING.

PACIFIC VERSION
 Shown on sheets 3 of 4 & 4 of 4
 (Atlantic version shown on sheets 1 of 4 & 2 of 4)

SET UP GAUGE
 2119599-1

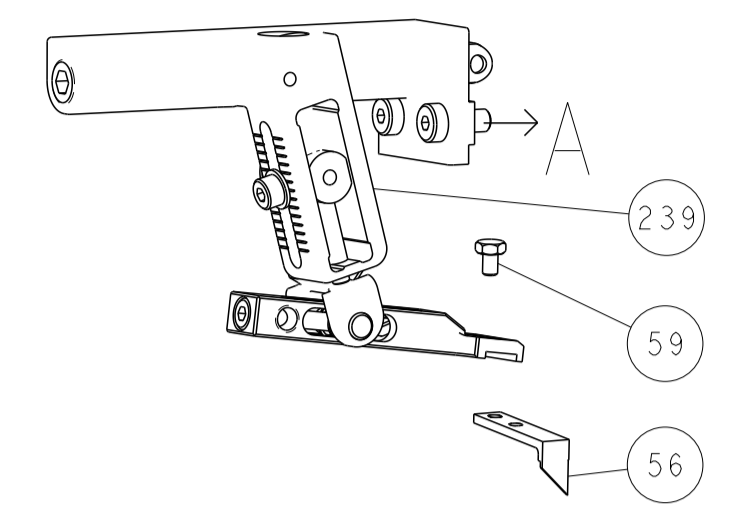
REVISIONS				
P	LTN	DESCRIPTION	DATE	OWN
-	-	SEE SHEET 1	-	-

6-240641-5	SPACER	261
2119782-1	FINE ADJUST HEAD ASM, PACIFIC STYLE	251
2119640-1	PUSH ROD, AIR FEED	250
1803259-1	BUSHING, FLANGED	249
1-22279-3	SPRING, COMPRESSION	246
2119082-9	CAM, SNAIL, INSULATION ADJUSTMENT	244
2079764-1	WASHER, WAVE SPRING, CREST-TO-CREST	243
2119083-1	RETAINER, INSULATION DIAL	242
7-18023-7	SCR, SKT HD CAP M3 X 4.0	241
2168400-6	SHCS, LOW HEAD, RoHS, M5 X 16	240
2119580-1	MECHANICAL FEED ASSEMBLY	239
2063440-1	AIR FEED MODULE	238
2119740-2	TAG, IDENTIFICATION	213
1901094-3	SPACER, FEEDER	198
21045-3	RING, RETAIN, EXTERN, 3/16 CRESCENT	172
994969-1	MAGNET, RARE EARTH HIGH ENERGY	166
994970-2	COUNTER, MAGNETIC	164
240638-1	SPRING, FEED FINGER	163
8-21084-1	O-RING, .801 ID, .070 DIA. MAT.	152
2119641-2	FEED CAM, AIR FEED	151
2119798-2	DETENT PIN	145
2079383-8	SCR, BHSC, RoHS (M4 X 16)	144
2168400-5	SHCS, LOW HEAD, RoHS, M4 X 20	143
2119653-2	FEED CAM, POST FEED	142
1-2119656-0	APPLICATOR BASIC ASSEMBLY, SF	141
2119650-1	RAM, ASIAN STYLE, SIDE FEED	140
2119092-2	BOLT, ADJUSTMENT	139
3-23627-7	PIN, RETAIN, GRVD, 3/16 X .854	137
2119799-1	HOLDER, FEED FINGER, AF	136
SEE NOTE 4	MEMORY CHIP, PROGRAMMED	135
1633743-1	SERVO FEED LATCH ASM	133
1-18028-2	WASHER, FLAT, REG M4	119
2119944-1	FEED FINGER ASSEMBLY, SF	117
455888-3	SPACER, CRIMPER	82
1-2079383-0	SCR, BHSC, RoHS (M3 X 6)	79
1633782-2	FENCE	78
2119956-1	DOCUMENTATION PACKAGE	71
2119740-1	TAG, IDENTIFICATION	67
2168078-1	SCREW, DRIVE, RH, RoHS, 2 x .188	66
2119793-1	LIMITER, ADJUSTMENT BOLT	63
992763-5	SCR, SET, SOC, CONE POINT, M3 X 4.0	62
5-18022-5	SCR, HEX HD CAP, M4 X 6.0	59
1338685-1	PAWL, FEED	56
2-2168083-6	SCR, SKT HD CAP, RoHS, M4 X 18	53
18023-9	SCR, SKT HD CAP M4 X 6.0	49
2119652-1	FEED CAM, PRE FEED	48
2079383-7	SCR, BHSC, RoHS (M8 X 25)	41
2119645-1	DISC, NUMBERED FA WIRE ADJUSTMENT	40
2119957-1	APPLICATOR SHIM PACK	39
2119644-1	RAM WASHER, PRECISION	38
1-1752356-3	SUPPORT, TERMINAL	34
2079383-5	SCR, BHSC, RoHS (M4 X 20)	33
2161328-1	HEX HEAD, FLANGED, M5 X 8mm LONG	32
1320908-3	SPACER, STRIP GUIDE	30
2119959-2	ASSEMBLY, STRIP GUIDE	29
1-455888-0	SPACER, CRIMPER	28
1320928-6	STRIP GUIDE	24
2168083-2	SCR, SKT HD CAP, RoHS, M4 X 8.0	21
1-18028-2	WASHER, FLAT, REG M4	20
2119533-1	STRIPPER, SIDE FEED	19
879657-2	HOLD DOWN	18
2119806-1	INSERT, SHEAR	13
3-22280-3	SPRING, COMPRESSION	12
1-356885-4	STOP, SHEAR	11
2119805-1	SHEAR HOLDER, FRONT	10
462006-6	FLOATING SHEAR, FRONT	9
5-1333202-3	ANVIL, COMBINATION	8
2-240641-5	SPACER	7
2119757-8	DEPRESSOR, SHEAR	5
238011-9	BLOCK, CRIMPER SPACER	4
1-2119784-8	CRIMPER, INSULATION O PREMIUM	3
455888-5	SPACER, CRIMPER	2
9-657555-1	CRIMPER, WIRE PREMIUM	1

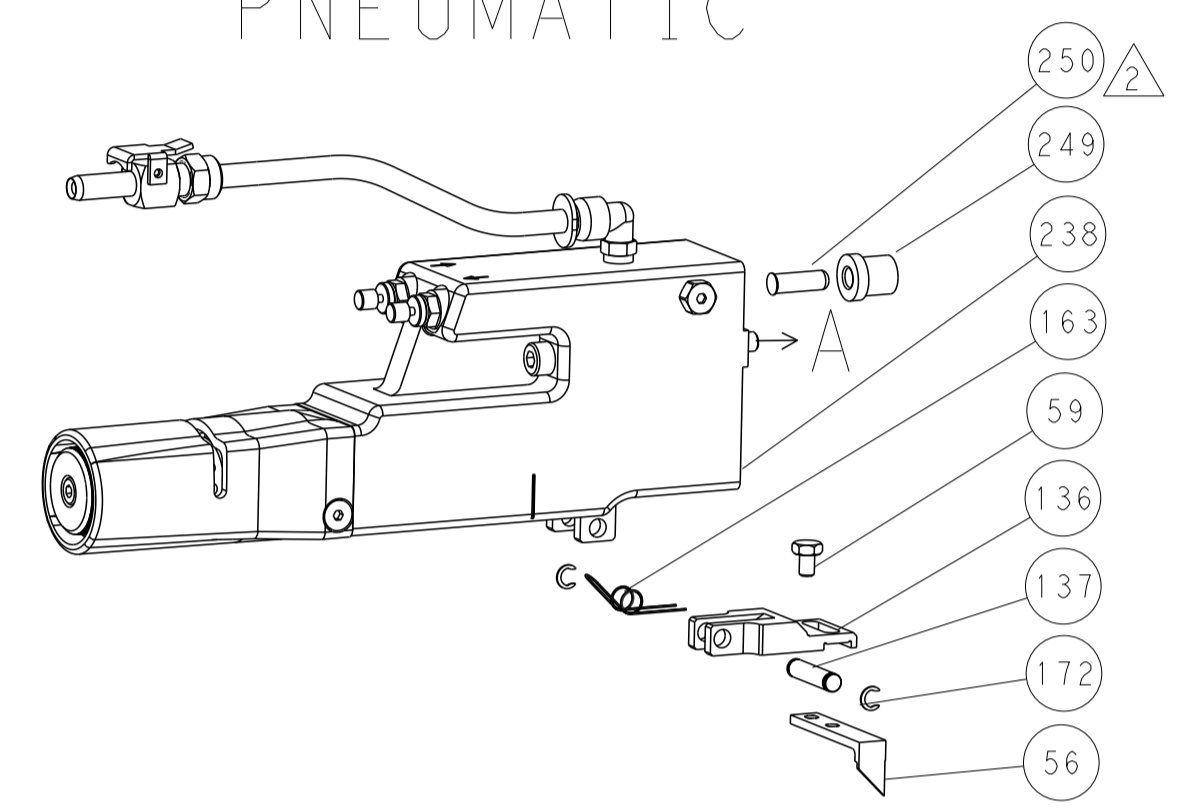
THIS DRAWING IS A CONTROLLED DOCUMENT.		OWN	DATE	TE Connectivity	
DIMENSIONS:		Y. YIN	23SEP2011		
TOLERANCES UNLESS OTHERWISE SPECIFIED:		G. BAILEY	23SEP2011		
mm	0 PLC ±	APVD	23SEP2011	NAME Ocean Side Feed Applicator	
	1 PLC ±	S. XI		PRODUCT SPEC	
	2 PLC ±			APPLICATION SPEC	
	3 PLC ±			SIZE CAGE CODE DRAWING NO	
	4 PLC ±			A1 - C=2151045	
	ANGLES ±			RESTRICTED TO	
	FINISH ±			CUSTOMER ACCESSIBLE PRODUCTION DRAWING	
MATERIAL		WEIGHT		SCALE 1:2 SHEET 3 OF 4 REV E	

REVISIONS				
P	LTN	DESCRIPTION	DATE	APVD
-	-	SEE SHEET 1	-	-

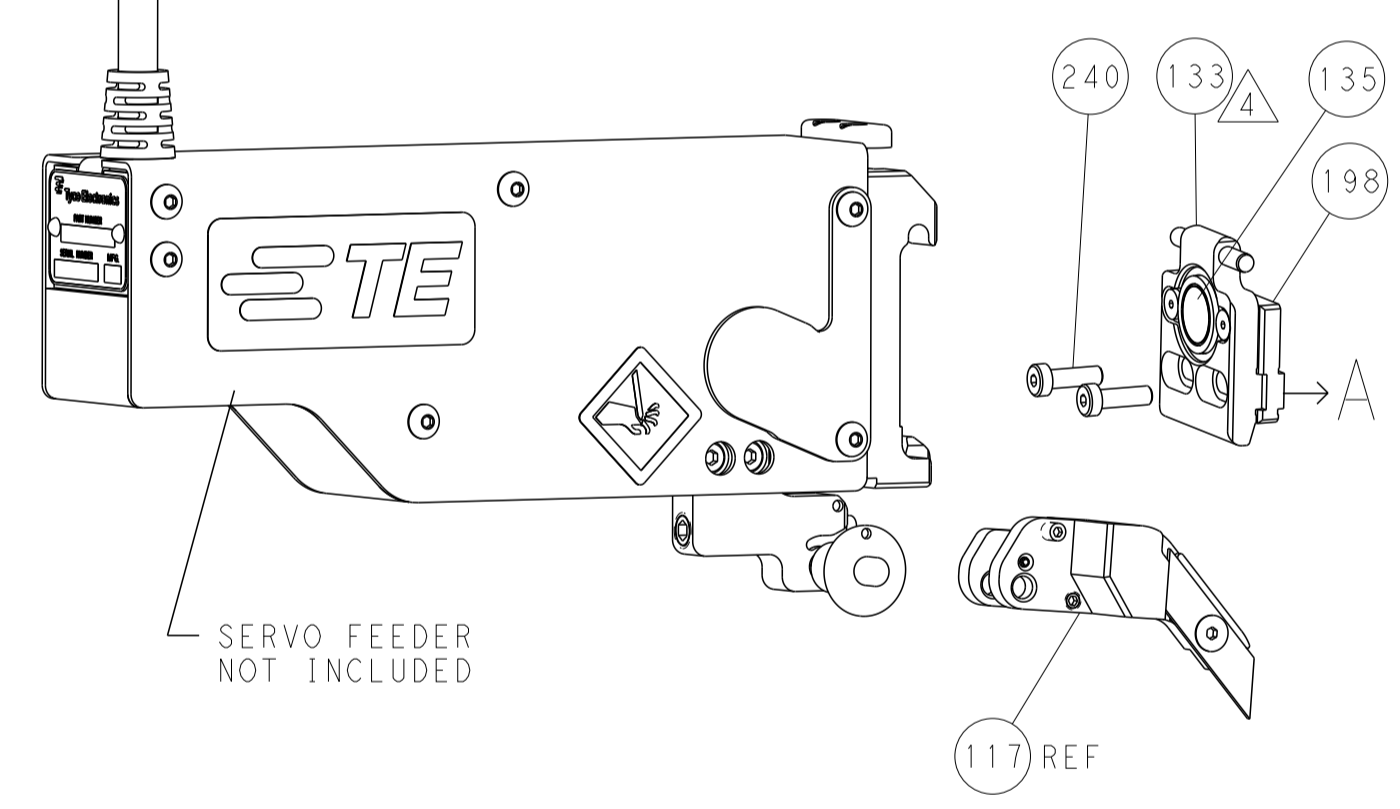
FEED TYPE MECHANICAL



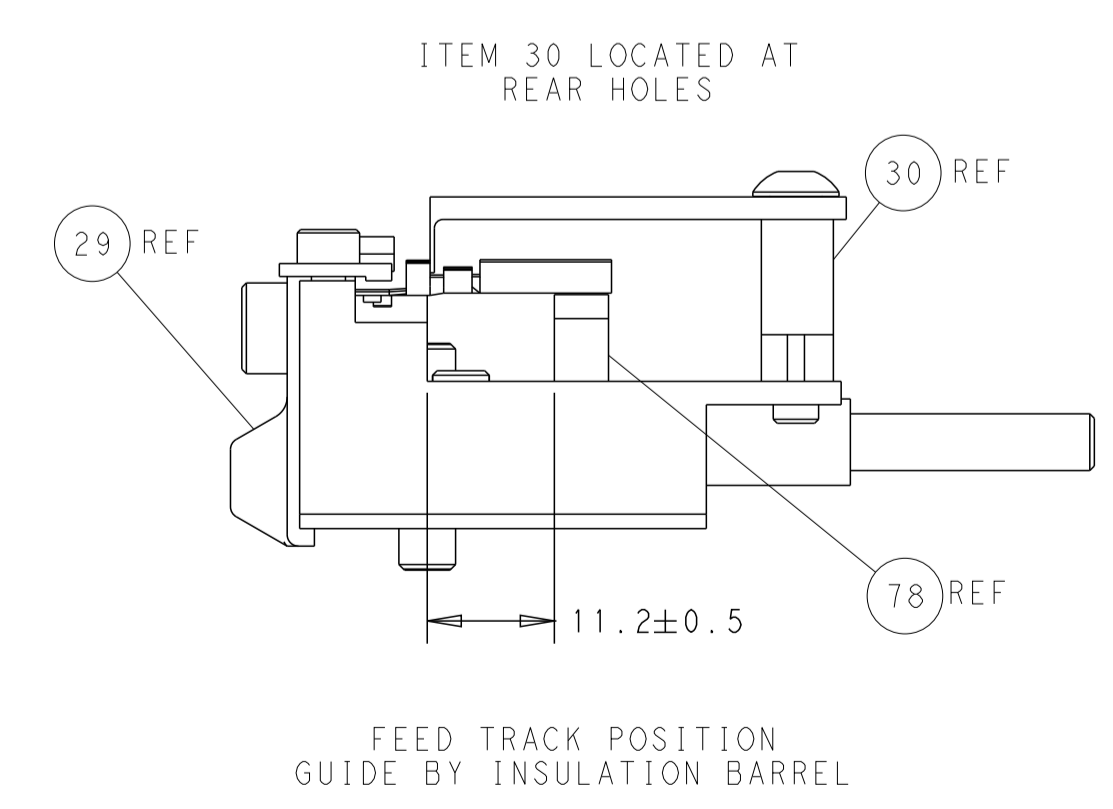
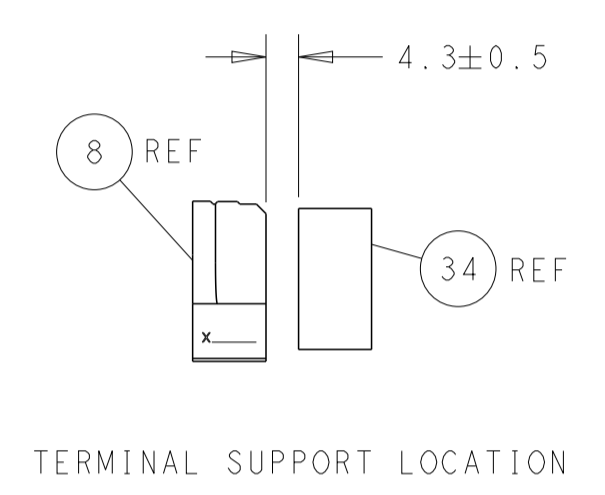
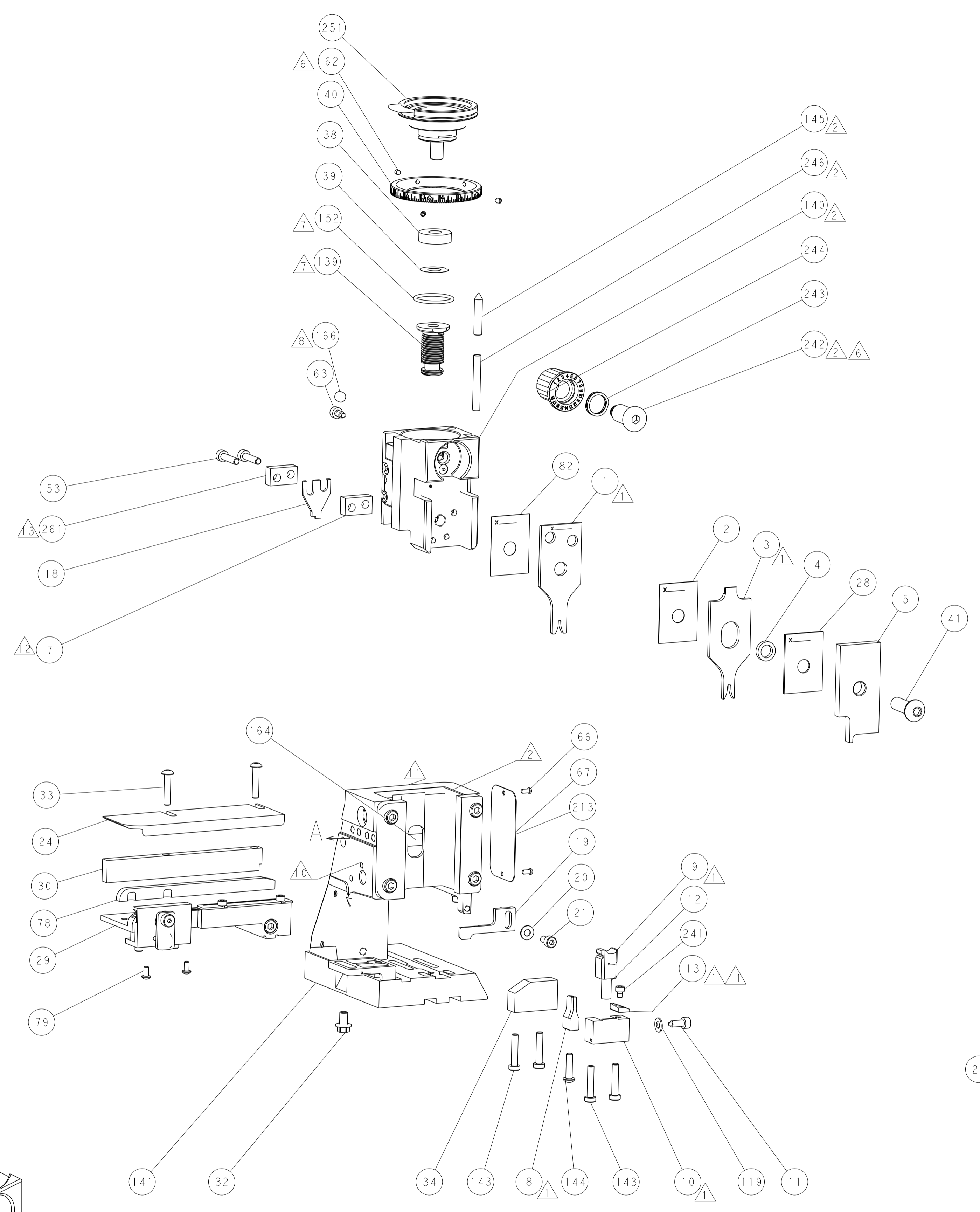
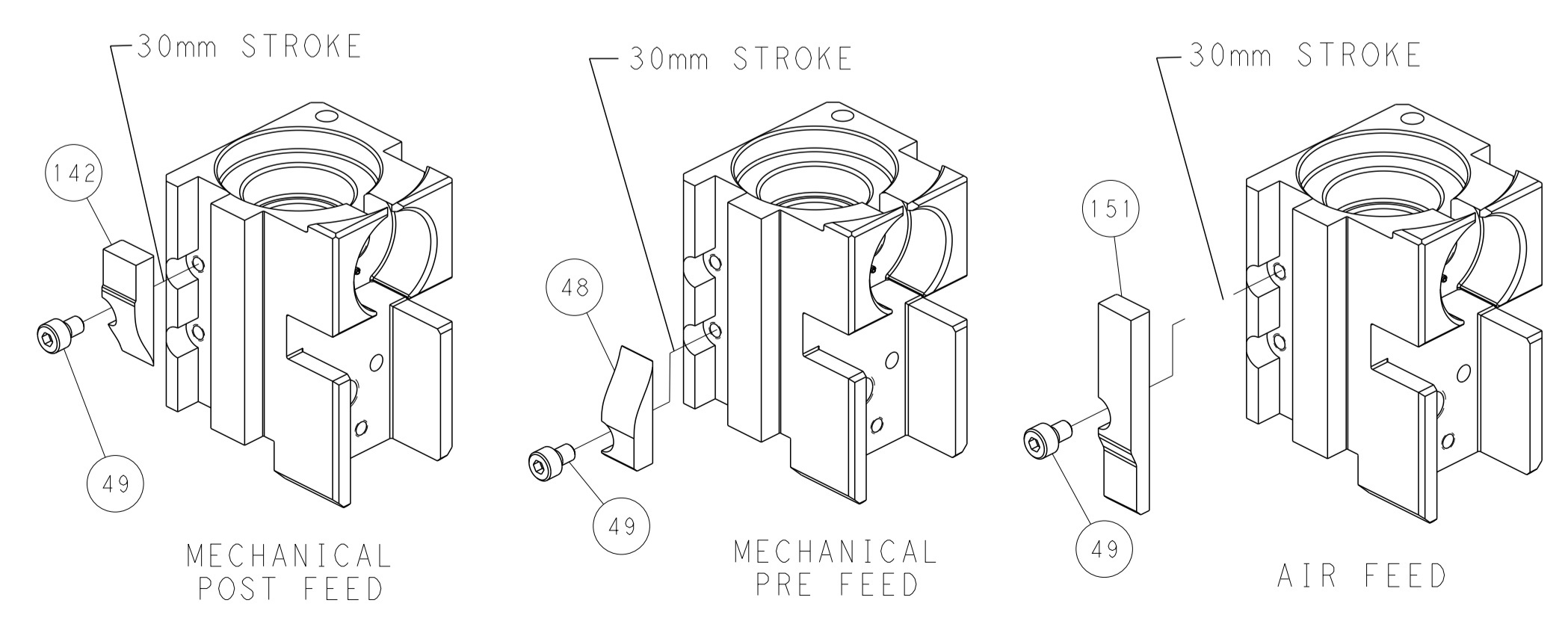
PNEUMATIC



SERVO LATCH PLATE



CAM POSITIONS



PACIFIC VERSION
 Shown on sheets 3 of 4 & 4 of 4
 (Atlantic version shown on sheets 1 of 4 & 2 of 4)

THIS DRAWING IS A CONTROLLED DOCUMENT.		OWN: Y. YIN 23SEP2011	TE Connectivity
DIMENSIONS: mm		CHK: G. BAILEY	
TOLERANCES UNLESS OTHERWISE SPECIFIED:		APVD: -	NAME: Ocean Side Feed Applicator
0 PLC	±	PRODUCT SPEC	APPLICATION SPEC
1 PLC	±	APPLICATOR SPEC	SIZE: A1
2 PLC	±	SCALE: 1:2	CAGE CODE: -
3 PLC	±	DRAWING NO: C=2151045	RESTRICTED TO: -
4 PLC	±	WEIGHT: -	SHEET 4 OF 4
ANGLES	±	CUSTOMER ACCESSIBLE PRODUCTION DRAWING	REV E
FINISH	-	SCALE: 1:2	SHEET 4 OF 4