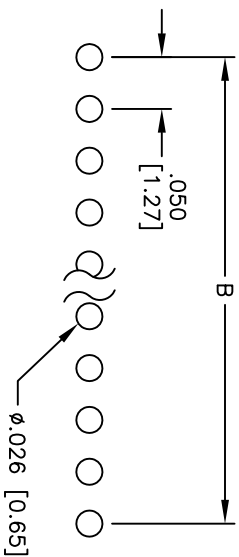
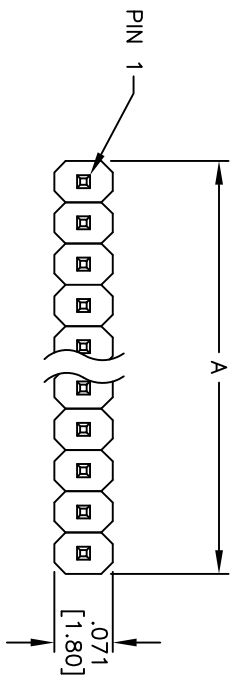
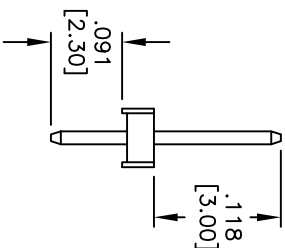
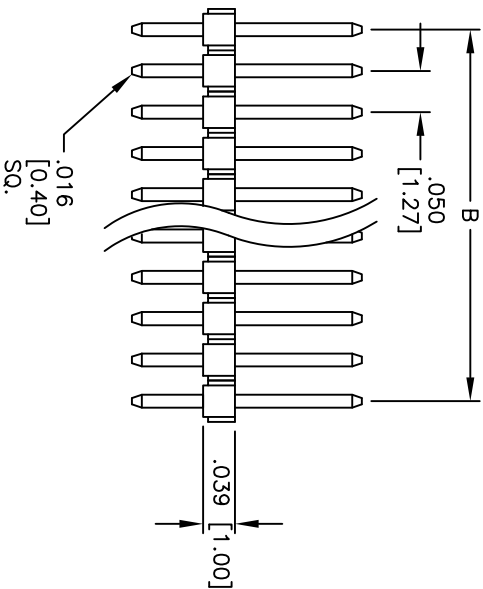


APPROVED: _____
 DATE: _____ TITLE: _____

Rev	AWO #	Description	Date	Appr
-		RELEASED	2/7/12	
A		REVISED SPEC.	7/31/13	



RECOMMENDED PCB LAYOUT



SPECIFICATIONS:

- Material: Insulator: Hi-temp thermoplastic, rated UL 94V-0
- Insulator color: Black
- Contacts: Brass
- Plating: Tin over Copper underplate overall
- Electrical: Current rating: 1 Amp max.
- Contact resistance: 20 mohms max. initial
- Insulation resistance: 5,000 Mohms min.
- Dielectric withstanding voltage: 500 VAC for 1 minute
- Temperature Rating: Operating temperature: -40°C to +105°C
- Environmental: Lead free, RoHS compliant

Positions: 02 thru 50
 A = .050 [1.27] x No. of Positions Per Row
 B = .050 [1.27] x No. of Spaces

UNLESS OTHERWISE SPECIFIED	
ALL DIMENSIONS ARE INCHES [MM]	
TOLERANCES:	EXCEPT AS NOTED
.X	± .10
.XX	± .020
.XXX	± .015
.XXX	± .010

ADAM TECH

909 Rahway Avenue, Union, NJ 07083
 Phone: 908-687-5000 Fax: 908-687-5710

TITLE: .050 [1.27] SINGLE ROW PIN HEADER

APPROVALS	DATE	SIZE	PART NO.	SCALE	SHEET 1 OF 1
DRAWN AY	2/7/12	X	HPH1-A-XX-TA	NTS	1
CHECKED AH	2/7/12	X			
APPROVED					



A

B

C

D

A

B

C

D

6

5

4

3

2

1

6

5

4

3

2

1