

**FEATURES**

- ▶ High Power Density in SIP-8 Package
- ▶ Small Footprint: 21.8 x 9.3 mm (0.86"x 0.37")
- ▶ Wide 2:1 Input Range
- ▶ Fully Regulated Output
- ▶ Operating Temp. Range -40°C to +85°C
- ▶ Overload Protection
- ▶ Remote On/Off Control
- ▶ I/O-Isolation Voltage 1000VDC
- ▶ 3 Years Product Warranty



**PRODUCT OVERVIEW**

The MCW1000 series is a range of isolated 2W DC/DC converter modules featuring fully regulated output and wide 2:1 input voltage ranges. The product comes in a SIP-8 package with a very small footprint occupying only 2.0 cm<sup>2</sup> (0.3 square in.) on the PCB.

An excellent efficiency allows an operating temperature range of -40°C to +85°C. Further features include remote On/Off control and over load protection. The very compact dimensions of these DC/DC converters make them an ideal solution for many space critical applications in battery-powered equipment and instrumentation.

**Model Selection Guide**

Model Number	Input Voltage (Range) VDC	Output Voltage VDC	Output Current		Input Current		Reflected Ripple Current mA(typ.)	Max. capacitive Load µF	Efficiency (typ.) @Max. Load %
			Max.	Min.	@Max. Load	@No Load			
			mA	mA	mA(typ.)	mA(typ.)			
MCW1011	5 (4.5 ~ 9)	3.3	500	125	471	40	400	2200	70
MCW1012		5	400	100	548				
MCW1013		12	167	42	534				
MCW1021	12 (9 ~ 18)	3.3	500	125	184	20	300	2200	73
MCW1022		5	400	100	217				
MCW1023		12	167	42	209				
MCW1031	24 (18 ~ 36)	3.3	500	125	96	10	200	2200	72
MCW1032		5	400	100	109				
MCW1033		12	167	42	103				
MCW1041	48 (36 ~ 75)	3.3	500	125	49	8	500	2200	71
MCW1042		5	400	100	57				
MCW1043		12	167	42	53				

**Input Specifications**

Parameter	Model	Min.	Typ.	Max.	Unit
Input Surge Voltage (1 sec. max.)	5V Input Models	-0.7	---	15	VDC
	12V Input Models	-0.7	---	25	
	24V Input Models	-0.7	---	50	
	48V Input Models	-0.7	---	100	
Start-Up Threshold Voltage	5V Input Models	3.5	4	4.5	
	12V Input Models	4.5	7	9	
	24V Input Models	8	12	18	
	48V Input Models	16	24	36	
Under Voltage Shutdown	5V Input Models	---	3.5	4	
	12V Input Models	---	6.5	8.5	
	24V Input Models	---	11	17	
	48V Input Models	---	22	34	
Reverse Polarity Input Current	All Models	---	---	1	A
Short Circuit Input Power		---	---	1500	mW
Internal Filter Type		Capacitor type			
Internal Power Dissipation		---	---	3500	mW



**Output Specifications**

Parameter	Conditions	Min.	Typ.	Max.	Unit
Output Voltage Setting Accuracy	At 50% Load and Nominal Vin	---	---	±2.0	%Vom.
Line Regulation	Vin=Min. to Max.	---	±0.3	±0.5	%
Load Regulation	I <sub>o</sub> =25% to 100%	---	±0.5	±0.75	%
Ripple & Noise	max. 20MHz Bandwidth	---	30	50	mV <sub>P-P</sub>
Transient Recovery Time	25% Load Step Change	---	100	300	µsec
Transient Response Deviation		---	±3	±5	%
Temperature Coefficient		---	±0.01	±0.02	%/°C
Short Circuit Protection	Continuous				

**General Specifications**

Parameter	Conditions	Min.	Typ.	Max.	Unit
I/O Isolation Voltage (rated)	60 Seconds	1000	---	---	VDC
I/O Isolation Resistance	500 VDC	1000	---	---	MΩ
I/O Isolation Capacitance	100KHz, 1V	---	65	120	pF
Switching Frequency		100	300	650	KHz
MTBF (calculated)	MIL-HDBK-217F@25°C, Ground Benign	1,000,000	---	---	Hours

**Input Fuse**

5V Input Models	12V Input Models	24V Input Models	48V Input Models
1500mA Slow-Blow Type	700mA Slow-Blow Type	350mA Slow-Blow Type	135mA Slow-Blow Type

**Remote On/Off Control**

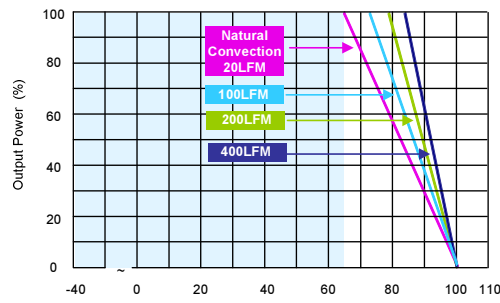
Parameter	Conditions	Min.	Typ.	Max.	Unit
Converter On	Under 0.6 VDC or Open Circuit, drops down to 0VDC by 2mV/°C				
Converter Off	2.7 to 15 VDC				
Standby Input Current		---	0.1	0.2	mA
Control Input Current ( on )	Vin = 0V	---	---	-0.4	mA
Control Input Current ( off )	Vin = 5.0V	---	---	1	mA
Control Common	Referenced to Negative Input				

**Environmental Specifications**

Parameter	Conditions	Min.	Max.	Unit
Operating Ambient Temperature Range (See Power Derating Curve)	Natural Convection	-40	+85	°C
Case Temperature		---	+90	°C
Storage Temperature Range		-55	+105	°C
Humidity (non condensing)		---	95	% rel. H
Cooling	Free-Air convection			
Lead Temperature (1.5mm from case for 10Sec.)		---	260	°C



**Power Derating Curve**

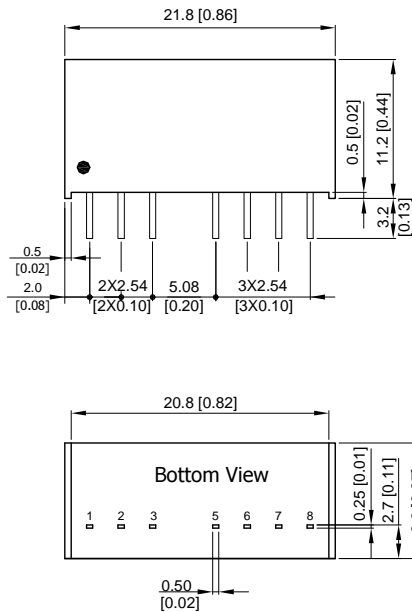


**Notes**

- 1 Specifications typical at Ta=+25°C, resistive load, nominal input voltage and rated output current unless otherwise noted.
- 2 Transient recovery time is measured to within 1% error band for a step change in output load of 75% to 100%.
- 3 Ripple & Noise measurement bandwidth is 0-20 MHz.
- 4 These power converters require a minimum output loading to maintain specified regulation, operation under no-load conditions will not damage these
- 5 All DC/DC converters should be externally fused at the front end for protection.
- 6 Other input and output voltage may be available, please contact factory.
- 7 That "natural convection" is about 20LFM but is not equal to still air (0 LFM).
- 8 Specifications are subject to change without notice.

**Package Specifications**

**Mechanical Dimensions**



**Pin Connections**

Pin	Function
1	-Vin
2	+Vin
3	Remote On/Off
5	NC
6	+Vout
7	-Vout
8	NC

NC: No Connection

- ▶ All dimensions in mm (inches)
- ▶ Tolerance: X.X±0.5 (X.XX±0.02)  
X.XX±0.25 (X.XXX±0.01)
- ▶ Pins ±0.1(±0.004)

**Physical Characteristics**

Case Size	: 21.8x9.3x11.2 mm (0.86x0.37x0.44 inches)
Case Material	: Non-Conductive Black Plastic (flammability to UL 94V-0 rated)
Pin Material	: Alloy 42
Weight	: 4.8g

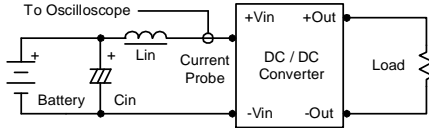


## Test Setup

### Input Reflected-Ripple Current Test Setup

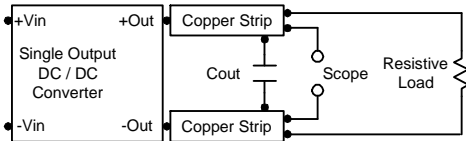
Input reflected-ripple current is measured with an inductor  $L_{in}$  (4.7 $\mu$ H) and  $C_{in}$  (220 $\mu$ F, ESR < 1.0 $\Omega$  at 100 KHz) to simulate source impedance. Capacitor  $C_{in}$ , offsets possible battery impedance.

Current ripple is measured at the input terminals of the module, measurement bandwidth is 0-500 KHz.



### Peak-to-Peak Output Noise Measurement Test

Use a  $C_{out}$  0.47 $\mu$ F ceramic capacitor. Scope measurement should be made by using a BNC socket, measurement bandwidth is 0-20 MHz. Position the load between 50 mm and 75 mm from the DC/DC Converter.



## Technical Notes

### Remote On/Off

Negative logic remote on/off turns the module off during a logic high voltage on the remote on/off pin, and on during a logic low. To turn the power module on and off, the user must supply a switch to control the voltage between the on/off terminal and the -Vin terminal. The switch can be an open collector or equivalent.

A logic high is 2.7V to 15V. A logic low is under 0.6 VDC or open circuit, drops down to 0VDC by 2mV/ $^{\circ}$ C. The maximum sink current at on/off terminal during a logic low is 1 mA. The maximum allowable leakage current of the switch at on/off terminal= (under 0.6VDC or open circuit) is 0.4mA.

### Maximum Capacitive Load

The MCW1000 series has limitation of maximum connected capacitance at the output. The power module may be operated in current limiting mode during start-up, affecting the ramp-up and the startup time. The maximum capacitance can be found in the data sheet.

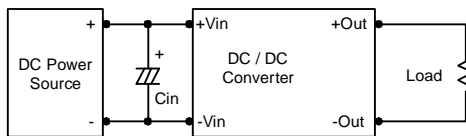
### Overcurrent Protection

To provide protection in a fault (output overload) condition, the unit is equipped with internal current limiting circuitry and can endure current limiting for an unlimited duration. At the point of current-limit inception, the unit shifts from voltage control to current control. The unit operates normally once the output current is brought back into its specified range.

### Input Source Impedance

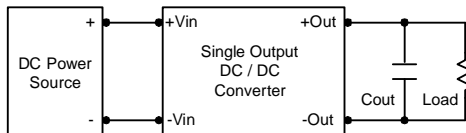
The power module should be connected to a low ac-impedance input source. Highly inductive source impedances can affect the stability of the power module. In applications where power is supplied over long lines and output loading is high, it may be necessary to use a capacitor at the input to ensure startup.

Capacitor mounted close to the power module helps ensure stability of the unit, it is commended to use a good quality low Equivalent Series Resistance (ESR < 1.0 $\Omega$  at 100 KHz) capacitor of a 8.2 $\mu$ F for the 5V input device, a 3.3 $\mu$ F for the 12V input devices and a 1.5 $\mu$ F for the 24V and 48V devices.



### Output Ripple Reduction

A good quality low ESR capacitor placed as close as practicable across the load will give the best ripple and noise performance. To reduce output ripple, it is recommended to use 3.3 $\mu$ F capacitors at the output.



### Thermal Considerations

Many conditions affect the thermal performance of the power module, such as orientation, airflow over the module and board spacing. To avoid exceeding the maximum temperature rating of the components inside the power module, the case temperature must be kept below 90 $^{\circ}$ C. The derating curves are determined from measurements obtained in a test setup.

