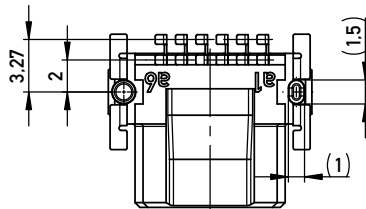
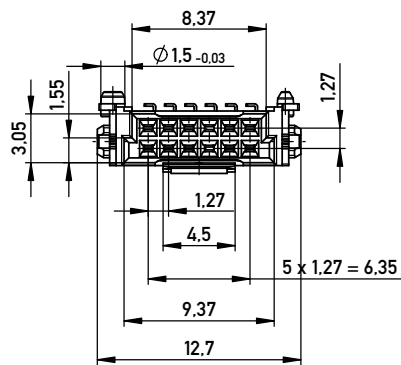
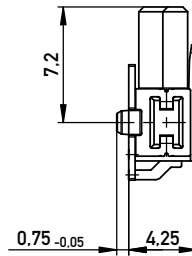
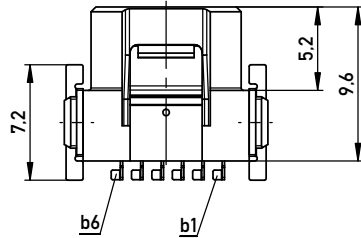
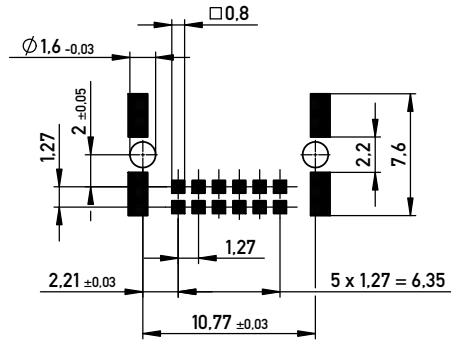
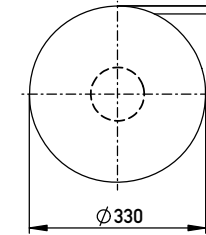


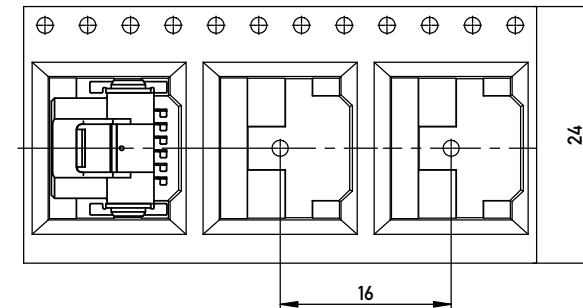
Leiterplatten-Layout Vorschlag für SMT
PCB-Layout Proposal for SMT



Verpackt im Gurt nach DIN IEC 60286-3
Tape on Reel Packaging according to DIN IEC 60286-3
Verpackungseinheit: 560 Stück
Packaging unit: 560 pcs



Abspulrichtung - Reel off Direction



Anforderungsstufe 1
Performance Level 1

Kontaktbereich vergoldet
Mating Area gold plating

Anschlussbereich verzinkt 4-6 µm
Terminal Area 4-6 µm tin plating

Koplanarität der Anschlüsse ≤ 0.1 mm
Coplanarity Area of Termination ≤ 0.1 mm

mit Verriegelung
with locking mechanism

Information:		Tolerances	All Dimensions in mm	Scale 3:1		
All rights reserved. Only for Information. To ensure that this is the latest version of this drawing, please contact one of the ERNI companies before using.		Subject to modification without prior notice. Drawing will not be updated.		Designation Federl. SMC-Q 12-SMD-BA7 Female SMC-Q 12-SMD-type7		
ERNI		www.ERNI.com		254262		I
b	23.04.2014					A3
Index	Date			Class SMCQ		

Copyright by ERNI GmbH
Proprietary notice pursuant to ISO 9006 to be observed.