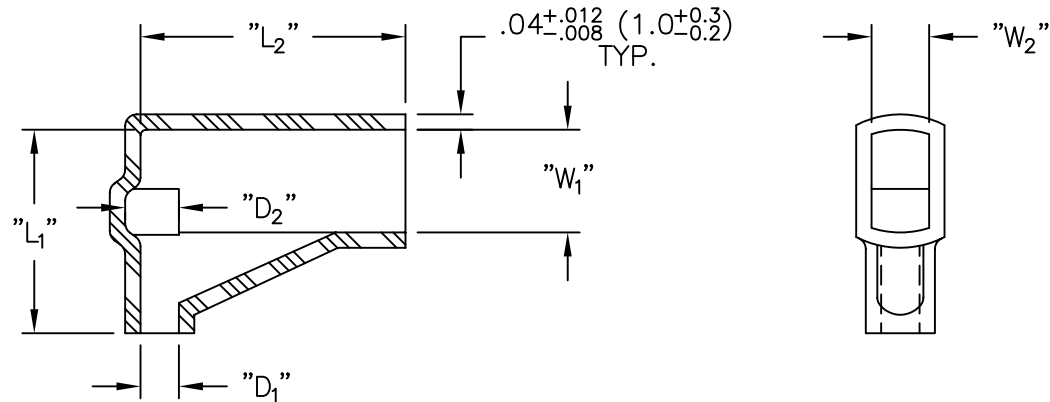


CONNECTOR SERIES	PART NO.	WIRE O.D. RANGE	WIRE GA.	"D ₁ "	"D ₂ "	"L ₁ "±.08 (±2.0)	"L ₂ "±.06 (±1.5)	"W ₁ "	"W ₂ "	ID NO. ON PART
187	246225	.058-.091 (1.5-2.3)	22-18	.10 (2.5)	.14 (3.5)	.45 (11.5)	.55 (14.0)	.24 (6.2)	.12 (3.0)	S54
	246230	.068-.113 (1.7-2.9)	20-18	.12 (3.0)	.16 (4.0)					S55
	246232	.071-.126 (1.8-3.2)	18-16	.13 (3.2)	.17 (4.2)					S56
250	248525	.058-.091 (1.5-2.3)	22-18	.10 (2.5)	.14 (3.5)	.53 (13.5)	.69 (17.5)	.34 (8.5)	.18 (4.5)	S61
	248530	.068-.113 (1.7-2.9)	20-18	.12 (3.0)	.16 (4.0)					S62
	248532	.071-.126 (1.8-3.2)	18-16	.13 (3.2)	.17 (4.2)					S63
	248540	.091-.140 (2.3-3.6)	16-14	.16 (4.0)	.20 (5.0)					S64
	248548	.113-.190 (2.9-4.8)	14-12	.19 (4.8)	.23 (5.8)					S65
	248550	.140-.190 (3.6-4.8)	12-10	.20 (5.0)	.24 (6.0)					S66



NOTES:

- MAT'L: SOFT PVC, (RMS-55).
- COLOR: TRANSPARENT BLUE.

A		UPDATED TABLE AND CHANGED FILE NO.	SM 02.28.02	TITLE: FLAG TYPE INSULATING SLEEVE				DWG IN IN (MM)		FINAL		PRINT TYPE	
REV		DESCRIPTION	ENGR DATE	TOLERANCES UNLESS NOTED .XX=±.010 .XXX=±.005 FRAC=±1/64 ANG=±1°	FILE # 246-248 SERIES	DWN: P.B.	APP:	PART #		PRINT TYPE		CA	
				MAT'L: SEE NOTES	RE: RICHCO, INC.	DT: 12-14-95	DT:	SEE TABLE					
						RICHCO INC. PO BOX 804238, CHICAGO, 60680 (773) 539-4060							