

Features

- Frequency Range: 20~600MHz
- P₋₁: 20dBm(typ)
- Low Noise: 0.6dB(Typ)
- Active Bias Design Supply Temperature Compensation
- Standard Hermetic Package
- Operating Temperature Range: -55°C~+85°C

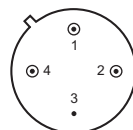
Electrical (50 Ω, V_{CC}=+5V, T_A=-55°C~+85°C)

Parameter	Symbol	Unit	Guaranteed	Typical
Frequency Range	f _L ~f _H	MHz	20~600	20~600
Gain	G _p	dB	≥21	24
Gain Flatness	ΔG _p	dB	--	±2.0
Noise Figure	F _n	dB	≤1.0 Δ	0.6
Input VSWR	VSWR _i	--	≤2.0:1 Δ	1.5:1
Output VSWR	VSWR _o	--	≤2.0:1 Δ	1.5:1
For 1dB Compression	P ₋₁	dBm	≥19.0*Δ	20.5
Supply Current	I _{CC}	mA	--	85

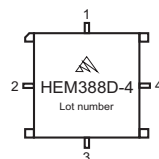
Note: "*" f=300 MHz. "Δ" T_A=24±1°C.

Maximum Ratings

- Power supply: +6V_{DC}
 RF input: +13dBm
 Storage Temp: +125°C



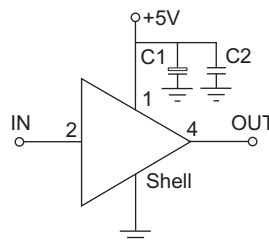
TO-8C



SMO-8C

Application Notes

1. Interface schematic shown as right, C₁=3.3~22 μF, C₂=3300~6800pF.
2. ESD observe handling precautions.
3. Connectorized package (SMA-1) available.
4. See assembly section for outline and mounting information.



Typical Curves

