

## SUPER FAST RECTIFIERS

VOLTAGE RANGE: 50 --- 600 V  
CURRENT: 2.0, 1.9, 1.6 A

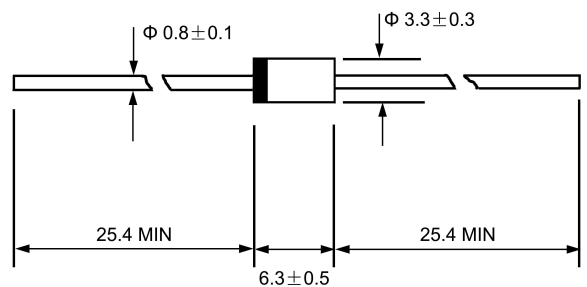
### FEATURES

- ◇ Low cost
- ◇ Diffused junction
- ◇ Low leakage
- ◇ Low forward voltage drop
- ◇ High current capability
- ◇ Easily cleaned with alcohol, Isopropanol and similar solvents

### MECHANICAL DATA

- ◇ Case: JEDEC DO-15, molded plastic
- ◇ Terminals: Axial lead, solderable per MIL-STD-202, Method 208
- ◇ Polarity: Color band denotes cathode
- ◇ Weight: 0.014 ounces, 0.39 grams
- ◇ Mounting position: Any

### DO - 15



Dimensions in millimeters

### MAXIMUM RATINGS AND ELECTRICAL CHARACTERISTICS

Ratings at 25°C ambient temperature unless otherwise specified.

Single phase, half wave, 50 Hz, resistive or inductive load. For capacitive load, derate by 20%.

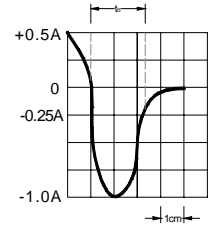
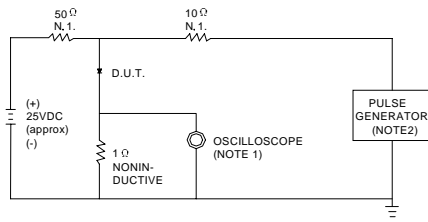
		BYV27-50	BYV27-100	BYV27-150	BYV27-200	BYV27-300	BYV27-400	BYV27-600	UNITS
Maximum recurrent peak reverse voltage	$V_{RRM}$	50	100	150	200	300	400	600	V
Maximum RMS voltage	$V_{RMS}$	35	70	105	140	210	280	420	V
Maximum DC blocking voltage	$V_{DC}$	50	100	150	200	300	400	600	V
Maximum average forward rectified current 9.5mm lead length, @ $T_A=75^\circ C$	$I_{F(AV)}$	2.0			1.9		1.6		A
Peak forward surge current 10ms single half-sine-wave superimposed on rated load @ $T_J=125^\circ C$	$I_{FSM}$	50.0						40.0	A
Maximum instantaneous forward voltage @ $I_F=I_{F(AV)}$	$V_F$	0.98			1.05		1.25		V
Maximum reverse current @ $T_A=25^\circ C$ at rated DC blocking voltage @ $T_A=100^\circ C$	$I_R$	5.0			100.0				$\mu A$
Maximum reverse recovery time (Note1)	$t_{rr}$	25			50				ns
Typical junction capacitance (Note2)	$C_J$	62							pF
Typical thermal resistance (Note3)	$R_{\theta JA}$	100							$^\circ C/W$
Operating junction temperature range	$T_J$	- 55 ----- + 150							$^\circ C$
Storage temperature range	$T_{STG}$	- 55 ----- + 150							$^\circ C$

NOTE: 1. Measured with  $I_F=0.5A$ ,  $I_R=1A$ ,  $I_{rr}=0.25A$ .

2. Measured at 1.0MHz and applied reverse voltage of 4.1V DC.

3. Thermal resistance from junction to ambient.

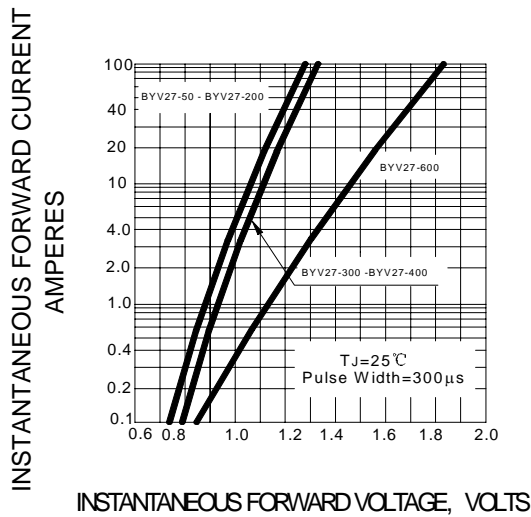
**FIG.1 – TEST CIRCUIT DIAGRAM AND REVERSE RECOVERY TIME CHARACTERISTIC**



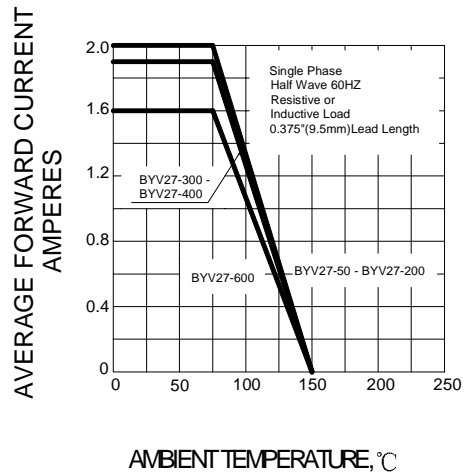
NOTES:1.RISE TIME = 7ns MAX INPUT IMPEDANCE = 1MΩ, 22pF.  
2.RISE TIME = 10ns MAX SOURCE IMPEDANCE = 50 Ω.

SET TIME BASE FOR 10 ns/cm

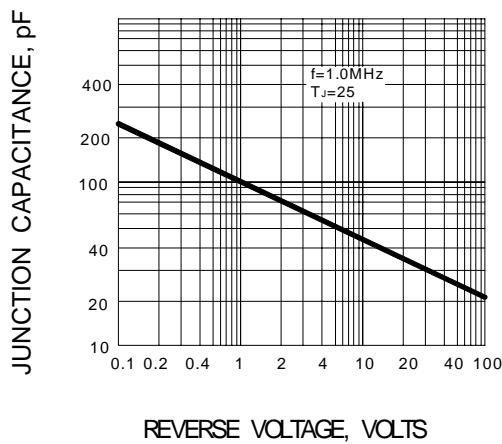
**FIG.2 – TYPICAL FORWARD CHARACTERISTIC**



**FIG.3 – FORWARD DERATING CURVE**



**FIG.4 – TYPICAL JUNCTION CAPACITANCE**



**FIG.5 – PEAK FORWARD SURGE CURRENT**

