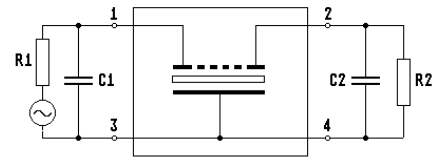
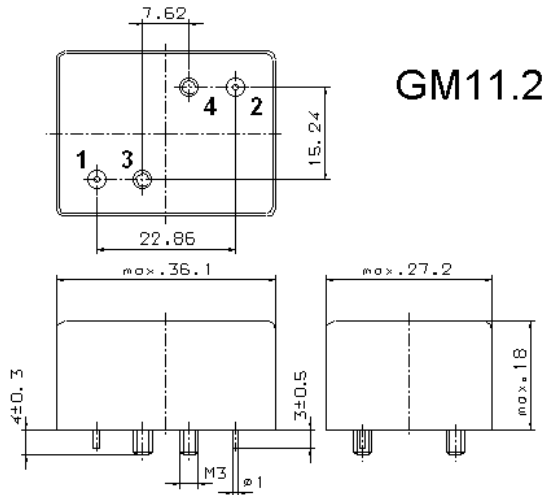


Specification for monolithic crystal filter:

MQF 10.7-0700/09

1. General

1.1. Package:



Note: Pin 2 - Output Pin 3 - Ground

- | | |
|-----------------------------------|------------------|
| 1.2. Type name: | MQF 10.7-0700/09 |
| 1.3. Number of poles: | 8 |
| 1.4. Operating temperature range: | -40°C to +70°C |
| 1.5. Storage temperature range: | -45°C to +85°C |

2. Electric values

- | | |
|---|---|
| 2.1. Nominal centre frequency f_0 : | 10.7 MHz |
| 2.2. Pass band | |
| 2.2.1. Centre frequency f_c : | 10.7 MHz \pm 400 Hz |
| 2.2.2. Bandwidth between 3 dB - frequencies: | $> f_c \pm 3.5$ kHz |
| 2.2.3. Ripple: | < 1.0 dB at $f_c \pm 2.5$ kHz |
| 2.2.4. Insertion loss:
(measured on smallest attenuation in pass band) | < 6.0 dB |
| 2.3. Stop band | |
| 2.3.1. $f_c \pm 7$ kHz | > 60 dB |
| 2.3.2. alternate attenuation | > 90 dB (except spurious) |
| 2.4. Terminating impedance (input and output): | 910 Ω // 25 pF |
| 2.5. Maximum input power level | 10 dBm |
| 3. Marking: | manufacturer, date code
MQF 10.7-0700/09 |
| 4. Environment conditions: | Corresponding to Vectron CF001 |

Edited by: _____ date: _____ name: _____