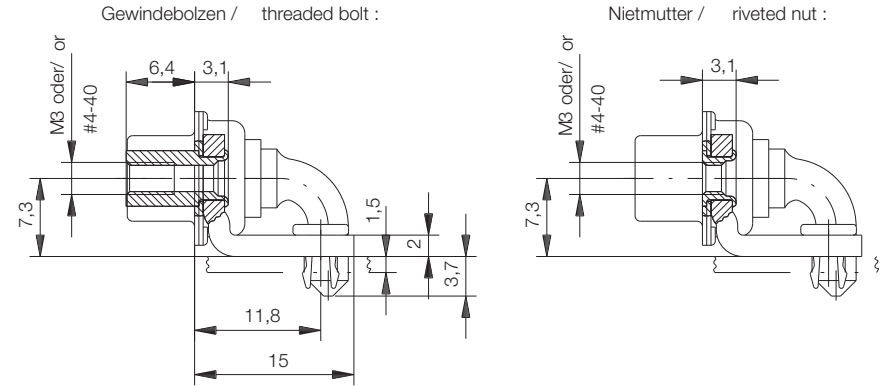
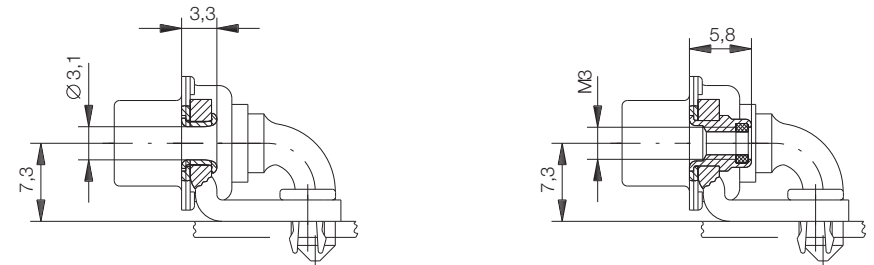


Schnitt A-A / cross section A-A



Rohrriet / rivet :

Nietmutter mit Klemmteil  
clamping thread:



Ident-Nr. / Part No. : Refer to table on page 2  
 Polzahl / No. of contacts : Refer to table on page 2  
 Anschlußart / Terminal Type : Angled solder  
 Anschlußlänge / Terminal Length : -  
 Bauart / Type : 5W5  
 Anforderungsstufe / Class : 207=0.8µm (30 µin) Au CONTACT, TIN/LEAD TERMINAL  
 Aufdruck / Logo : ERNI  
 Zubehör / Accessory : Refer to table on page 2  
 Sonderausführung / Special : Refer to table on page 2

Leiterplattenlochbild 134982 / Board hole pattern 134982

Information:	Tolerances	 All Dimensions in mm	Scale	2:1
	All rights reserved. Only for information. To insure that this is the latest version of this drawing, please contact one of the ERNI companies before using.		Designation <b>TMC-S 5W5-LP07-5</b> TMC-S 5W5-LP07-5	
Subject to modification without prior notice. Drawing will not be updated.		 www.ERNI.com	<b>054995</b>	
Index	Date		M:00022984.SZN	TMC/S S

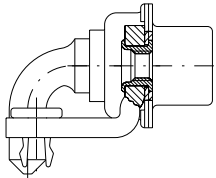
Consider protection memo from DIN 54

## Ordering Information

### D-Sub Connector High Power Solder Right Angle Female

Number of Pins

5W5



Accessory Termination Side: Rivet nut M3

134493

Accessory Termination Side: Rivet nut #4-40

134494