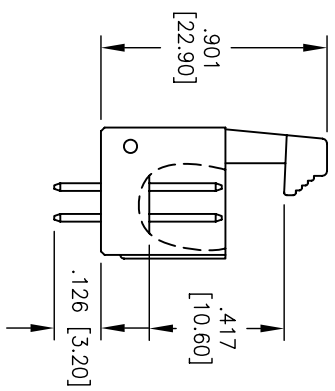
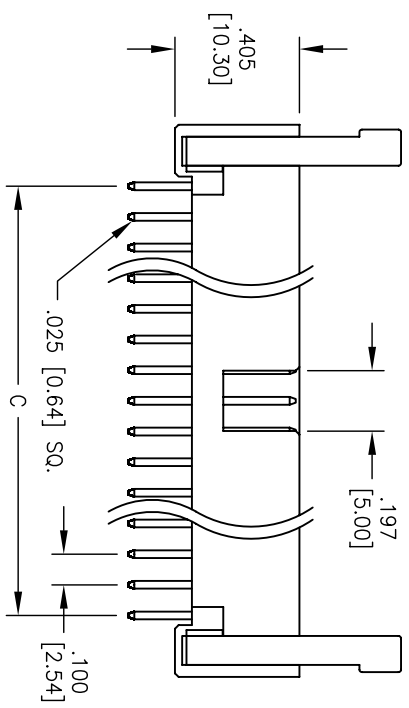
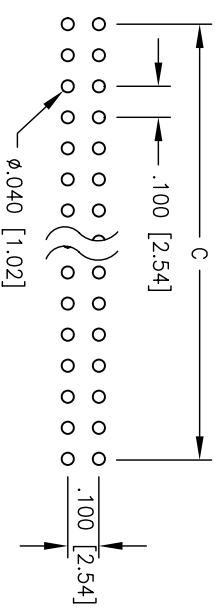
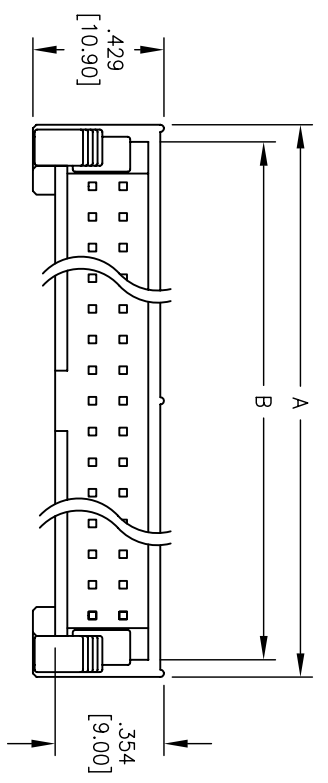


APPROVED: _____
 DATE: _____ TITLE: _____

Rev	AWO #	Description	Date	Appr
-		RELEASED	10/7/05	
A		UPDATED TOP VIEW	3/31/08	



A = .100 [2.54] X No. of Positions / 2 + .301 [7.66]
 B = .100 [2.54] X No. of Positions / 2 + .189 [4.80]
 C = .100 [2.54] X No. of Positions / 2 - 1

SPECIFICATION:

Material:
 Insulator: PBT, glass reinforced, rated UL-94V-0
 Insulator Color: Black
 Contacts: Phosphor Bronze or Brass
Contact Plating:
 Tin over Copper underplate overall
Electrical:
 Operating Voltage: 250V AC max.
 Current rating: 2 Amps max.
 Contact resistance: 30 mohms max
 Insulation resistance: 3000 Mohms min
 Dielectric withstanding voltage: 500 VAC / minute
Mechanical:
 Mating durability: 500 cycles min.
Temperature Rating:
 Operating temperature: -40° TO +105°
 Environmental:
 Lead free, RoHS compliant.
 Recommended soldering temp: 235°C for 5 sec.



UNLESS OTHERWISE SPECIFIED ALL DIMENSIONS ARE INCHES [MM]	
TOLERANCES: EXCEPT AS NOTED	
INCHES	HOLES
X .10 ± .020	ØX ± .015
XX .020 ± .015	ØXXX ± .010
XXX .015 ± .010	ØXXXX ± .010
APPROVALS	DATE
DRAWN SS	10/7/05
CHECKED	
APPROVED	

ADAM TECH
 909 Railway Avenue, Union, NJ 07083
 Phone: 908-687-5000 Fax: 908-687-5710

TITLE: BOX HEADER, VERTICAL PCB MOUNT, 2 ROW .100 PITCH, TIN PLATED

SIZE	PART NO.	REV.
X	BHR-XX-VTASL	A
REF:	SCALE: NTS	SHEET 1 OF 1