

General Description

KR Electronics part number 2936-2-SMA is a 36 MHz bandpass filter. The filter has a minimum 1 dB bandwidth of 8 MHz and a maximum 50 dB bandwidth of 20.8 MHz. Other center frequencies and bandwidths are available. Please consult the factory.

Features

- 36 MHz Bandpass Filter
- 8 MHz min 1 dB Bandwidth
- 20.8 MHz max 50 dB Bandwidth
- 50 Ω Source and Load
- SMA Connectors
- Also available in SMD package

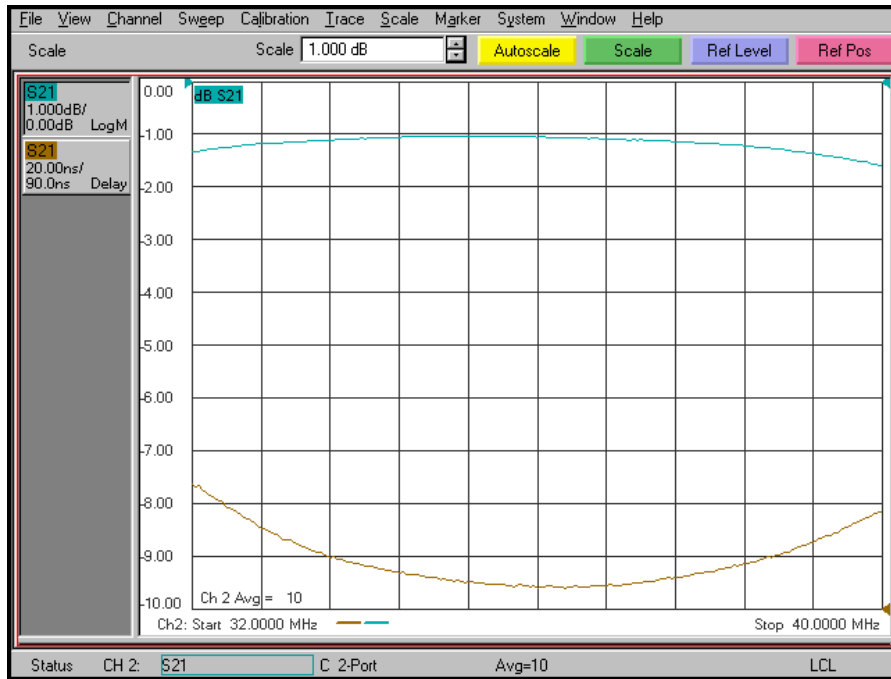
Typical Performance

Overall Response (10 dB/div)

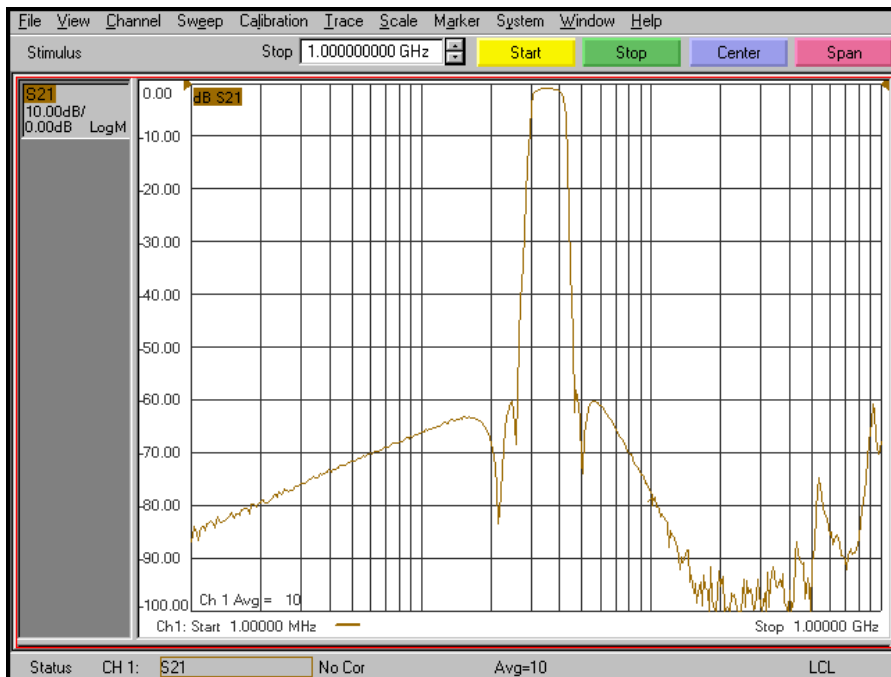


KR Electronics 2936-2-SMA

Passband Amplitude & Group Delay (1 dB/div & 20 nsec/div)



Overall Response (10 dB/div)



KR Electronics, Inc.
91 Avenel Street
Avenel, NJ 07001

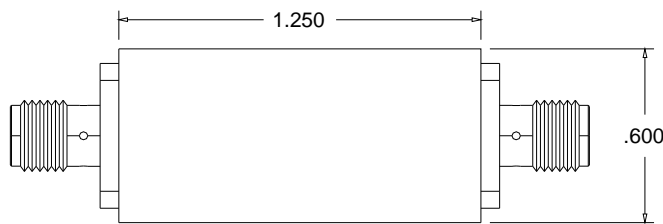
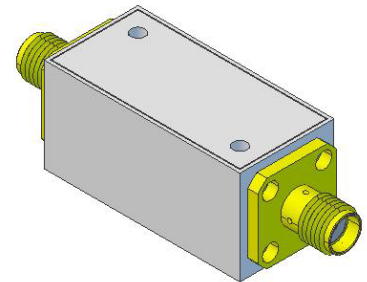
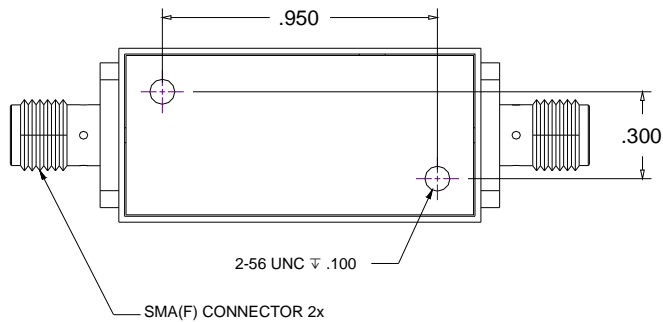
Web: www.krfilters.com
Email: sales@krfilters.com
Phone: (732) 636-1900
Fax: (732) 636-1982

KR Electronics 2936-2-SMA

Specifications

Parameter	Specification	
Filter type	Bandpass	
Center Frequency	36 MHz	
Insertion Loss	2.5 dB max	1 dB typical
1 dB Bandwidth	8 MHz min	10 MHz typical
3 dB Bandwidth	11.9 MHz typical	
40 dB Bandwidth	18 MHz typical	
50 dB Bandwidth	20.8 MHz max	19.1 MHz typical
Source and Load	50 Ω	

Physical Dimensions



Notes:

1. Dimensions in inches
2. Metal Case
3. SMA(F) Connectors
4. Also available in surface mount package

KR Electronics, Inc.
91 Avenel Street
Avenel, NJ 07001

Web www.krfilters.com
Email sales@krfilters.com
Phone (732) 636-1900
Fax (732) 636-1982