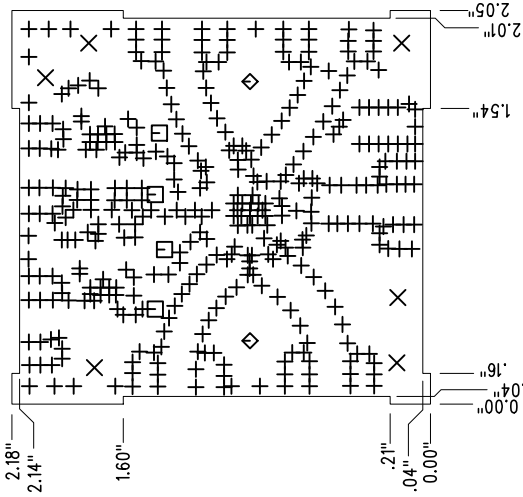
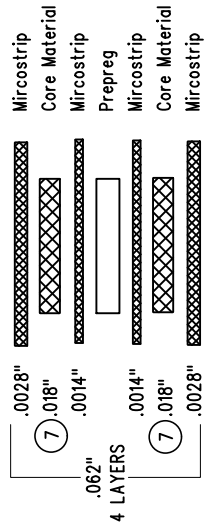


REVISIONS		
REV	DESCRIPTION	DATE

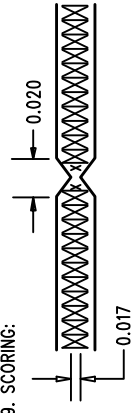


NOTES: UNLESS OTHERWISE SPECIFIED

- FAB PER IPC-A-600
- MATERIAL: EPOXY FIBERGLASS, NEMA GRADE FR-4 FINISHED THICKNESS TO BE .062 +/- .005 INCH WITH 2 OZ. COPPER ON TWO OUTER LAYERS AND 1 OZ. COPPER ON TWO INTERNAL LAYERS. FLAMABILITY RATING: 94 V-0 MINIMUM.
- SIZE: CUT TO DIMENSIONS AND TOLERANCES SHOWN. 0.00 ARE PRIMARY DATUMS.
- DRILLING: DRILL HOLES PER SCHEDULE. PLATE THROUGH HOLES WITH COPPER, .001 INCH THICK MIN. ALL HOLE SIZES ARE SPECIFIED AFTER PLATING. HOLE LOCATION TOLERANCES ARE +/- .003 INCH IN RELATION TO CENTER
- FINISH: SMOBC USING WET MASK, OR LPI BOTH SIDES, GREEN PREFERRED. SILKSCREEN COMPONENT SIDE WITH WHITE NON-CONDUCTIVE INK.
- CONTROLLED 50 OHM IMPEDANCE (AT 2.5 GHz FREQ.) FOR LAYER 1-2 AND LAYER 4-3.
- (7)** SUBJECT TO CHANGE BY MANUFACTURER, DEPENDING ON DIELECTRIC CONSTANT DEVIATIONS. PLEASE CONSULT LTC.
- DO NOT ALTER ARTWORK e.g. TO ADD LOGO OR DATE CODE.
- SCORING:

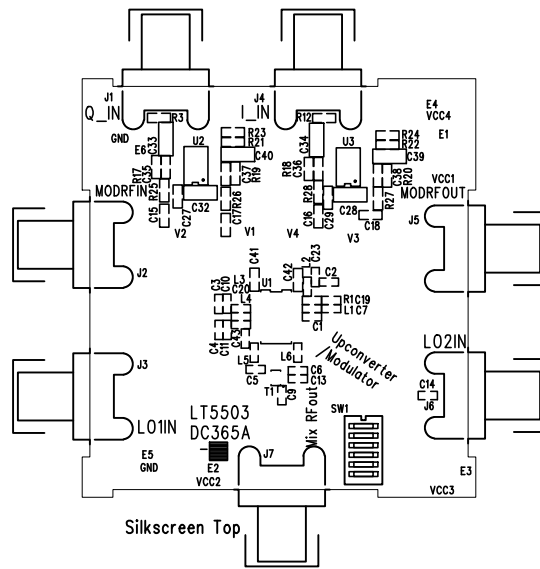


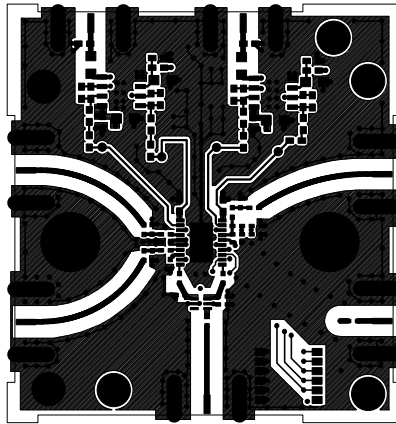
SIZE	QTY	SYM	PLTD
10	372	+	PLTD
95	6	X	PLTD
25	4	□	PLTD
120	2	◇	PLTD



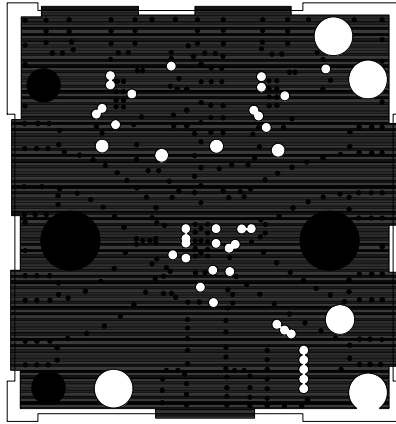
FAB DRAWING

		1630 McCarthy Blvd. Milpitas, CA 95035 PH: (408)432-1900	
APPROVALS		TITLE: LT5503, 1.8GHz-2.6GHz UPCONVERTER/MODULATOR	
DRAWN CHECK DESIGN ENGR	INIT DATE	SIZE A	DEMO DC365A
SCALE = NONE		REV. A	SHT 1 of 1

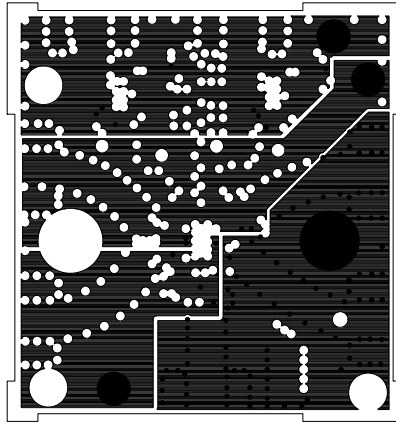




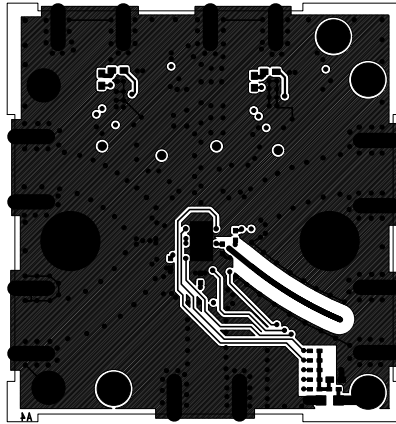
Component Side



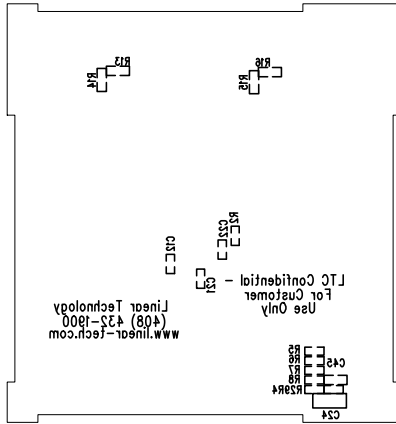
L2 GND



L3 POWER



Solder Side



Silkscreen bottom