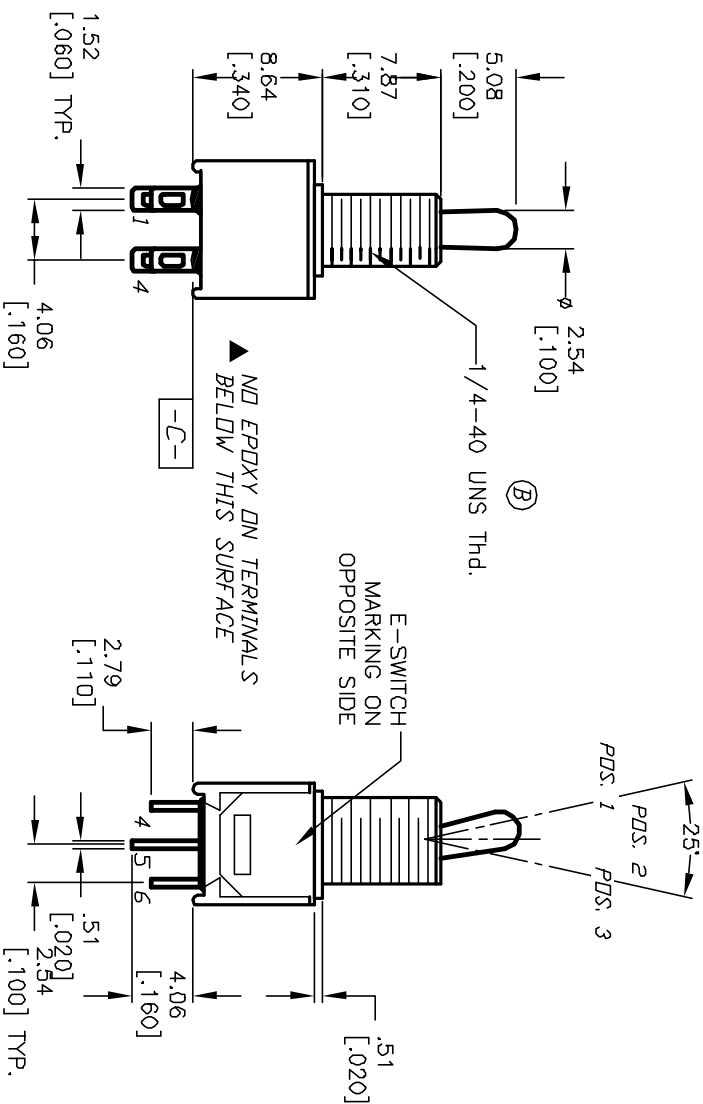
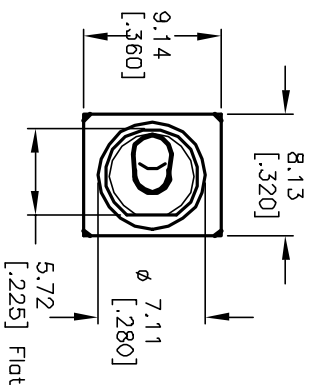


CIRCUIT: DPDT  
CONTACT CONFIGURATION

SWITCH FUNCTION		
PDS. 1	PDS. 2	PDS. 3
DN	NONE	DN
2-3-5-6	DPEN	2-1,5-4

(B)



NOTES:

1. ALL DIMENSIONS IN MM [INCH]
2. GENERAL TOLERANCE: X.X=±0.4  
X.XX=±0.25
3. TERM. NOS. FOR REF. ONLY
4. CONTACT RATING: 0.4 (VA) max. @20 VAC or DC max.  
Gold plate over Ni plate.
5. FIXED TERMINAL & MOVING CONTACT: Copper alloy w/  
Gold plate over Ni plate.
6. ELECTRIC LIFE: 50,000 make-and-break cycles  
at full load.
7. INSULATION RESISTANCE: 1,000 M ohm min.
8. DIELECTRIC STRENGTH: 1,000 V RMS @sea level.
9. OPERATING TEMP.: -30°C to 85°C
10. DESIGNATE MAJOR FEATURE:

REV.	ECN NO.	DESCRIPTION	DATE	CHKD
B	11636	REVISED NOTES & THD	8/31/01	CJB
		DESCRIPTION		

TITLE	SCALE	DATE	DR	DWG	REV
200 MDP-1 T3 B5 M1 R E	2:1	4/2/01	CJB	T221023	B

**E-SWITCH®**

THE INFORMATION CONTAINED IN THIS DOCUMENT IS PROPRIETARY TO E-SWITCH AND IS NOT TO BE COPIED OR TRANSMITTED