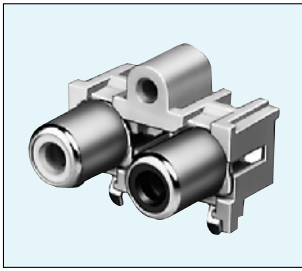


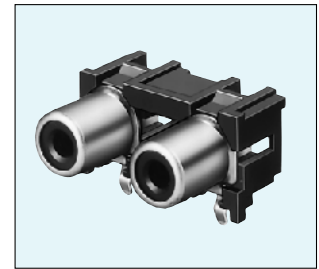
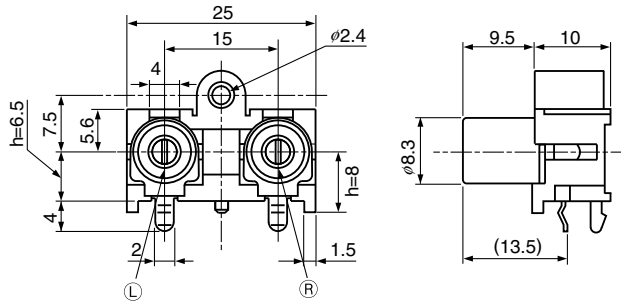
JPJ1611 / JPJ0811 Series

$h = 6.5$ or 8 mm



JPJ1611

With Installation Hole



JPJ0811

Without Installation Hole

Hole Layout (Bottom View)

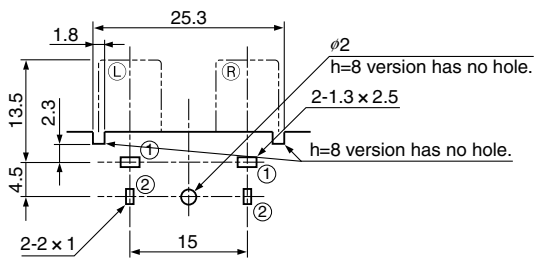


Fig. 1

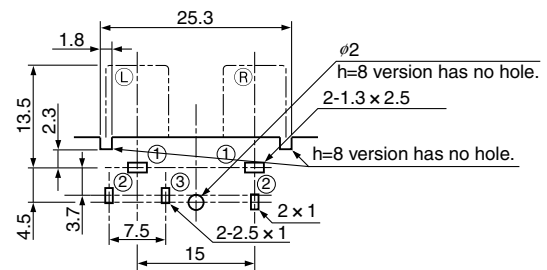


Fig. 2

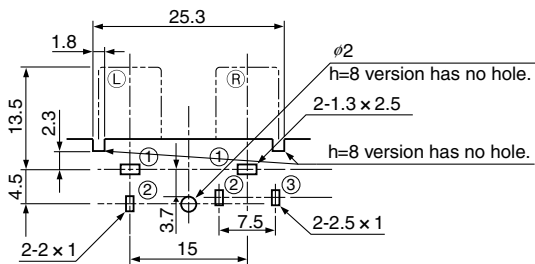


Fig. 3

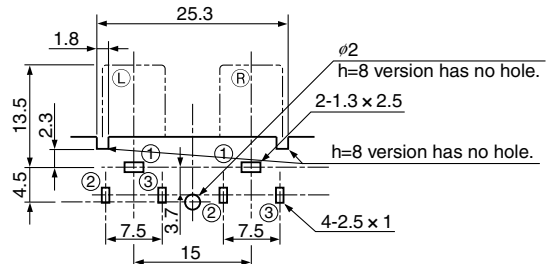


Fig. 4

Schematic	h mm	Installation Hole		Hole Layout (Bottom view)
		With	Without	
	6.5	JPJ1611-010 _{L R 0}	JPJ0811-01- _{L R 0} *	Fig. 1
	8	JPJ2811-010 _{L R 0} *	JPJ1811-010 _{L R 0} *	
	6.5	JPJ1621-010 _{L R 0}	JPJ0821-01- _{L R 0} *	Fig. 2
	8	JPJ2821-010 _{L R 0}	JPJ1821-010 _{L R 0}	
	6.5	JPJ1612-010 _{L R 0}	JPJ0812-010 _{L R 0} *	Fig. 3
	8	JPJ2812-010 _{L R 0}	JPJ1812-010 _{L R 0}	
	6.5	JPJ1622-010 _{L R 0}	JPJ0822-01- _{L R 0} *	Fig. 4
	8	JPJ2822-010 _{L R 0}	JPJ1822-010 _{L R 0}	

L & R indicate pin jack color No. below.

* When L -and R - pin jack have same color, No. L changes "0".
Housing color is same with L pin jack.

Color No.	
1	Black
2	Red
3	White
4	Yellow
5	Blue