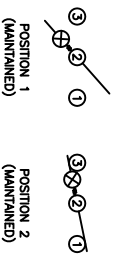


SCHEMATIC



SPECIFICATIONS

FUNCTION:
1P1T OFF-ON

RATINGS:
ANSI/UL 1054 and CAN/CSA C22.2 No. 55 (E194579):
16A 125VAC [UR, CLR]
10A 250VAC [UR, CLR]
1/3HP 125/250VAC [UR, CLR]

EN 61058-1:2002:
6(C)A 250V~ μ 1E4 T125/S5 [ENEC14]
125V

ILLUMINATION VOLTAGE:
125V

CONTACT RESISTANCE:
Initial: 35m Ω ; Max. at 50VAC

INSULATION RESISTANCE:
100M Ω Min. at 500VDC

DIELECTRIC STRENGTH:
1,500VAC For 1 Minute

ELECTRICAL LIFE:
6,000 Cycles [UR, CLR]
10,000 Cycles [ENEC14]

TEMPERATURE:
Operating: -20°C to 85°C

APPROVALS:



COLORS AND MARKINGS

BODY:
Black

ACTUATOR:
Transparent Red

MARKINGS:
None

MARKING COLOR:
None

MATERIALS

BODY:
Polyamide 6/6 (PA66), UL94 V-2

ACTUATOR:
Polycarbonate (PC), UL94 V-2

LAMP CARRIER:
Polyamide 6/6 (PA66), UL94 V-2

LAMP:
Neon Bulb

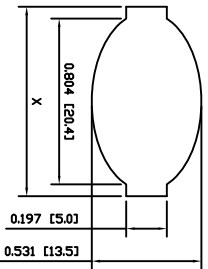
SPRING:
Steel

SPRING COVER:
Steel

CONTACTS:
Silver Alloy Plated Copper

TERMINALS:
Silver Plated Copper
Silver Plated Brass
Brass

SUGGESTED PANEL CUTOUT



PANEL THICKNESS	X
0.030~0.049 [0.75~1.25]	0.917 [23.3]
0.049~0.079 [1.25~2.00]	0.929 [23.6]
0.079~0.118 [2.00~3.00]	0.941 [23.9]

ACTUATOR	A	99/08/11	CAB
BODY	A	99/08/11 <td>CAB</td>	CAB
COLORS	A	99/08/11 <td>CAB</td>	CAB
MATERIALS	A	99/08/11 <td>CAB</td>	CAB
SPECIFICATIONS	A	99/08/11 <td>CAB</td>	CAB
REFERENCES	REV.	DATE	BY

1	2	3

4	5	6	7	8

DIMENSIONS	INCHES [MILLIMETERS]
GENERAL TOLERANCES	± 0.008 [± 0.2] / $\pm 1^\circ$
SCALE	DRAWING NOT TO SCALE
PROJECTION	1ST ANGLE

E SWITCH

LAMB INDUSTRIES

RE111C1000-116

DATE: AUGUST 11, 2009

REVISION: B