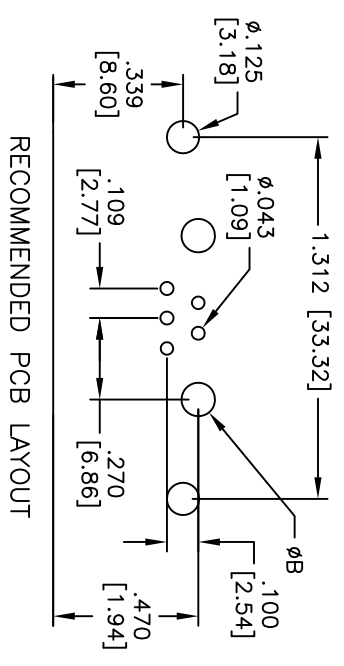
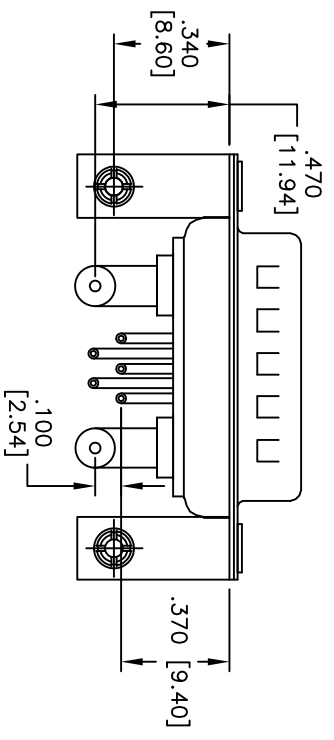
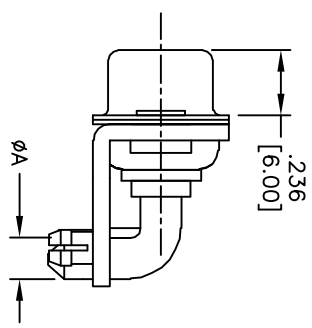
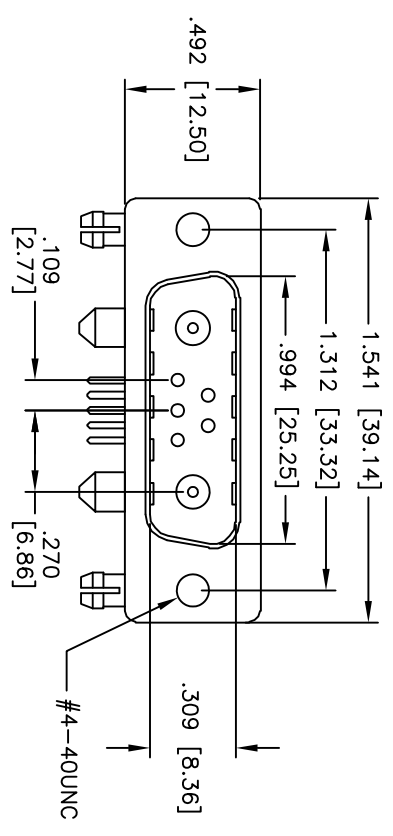


Rev	AWO #	Description	Date	Appr
-		RELEASED	7/28/10	

APPROVED: _____
 DATE: _____ TITLE: _____



PART NO.	CURRENT RATING	DIMENSION	
		ØA	ØB
D7W2-PLP-3-2-BL	10 AMPS	Ø.067 [1.70]	Ø.087 [2.20]
D7W2-PLP-4-2-BL	20 AMPS	Ø.110 [2.80]	Ø.129 [3.28]
D7W2-PLP-5-2-BL	30 AMPS	Ø.126 [3.20]	Ø.144 [3.65]
D7W2-PLP-6-2-BL	40 AMPS	Ø.148 [3.75]	Ø.165 [4.20]

ADAM TECH

909 Rahway Avenue, Union, NJ 07083
 Phone: 908-687-5000 Fax: 908-687-5710

TITLE: D-SUB, MALE POWER, D7W2, RIGHT ANGLE, PCB 10A, 20A, 30A OR 40A

SPECIFICATIONS:
 Material: Insulator: PBT, glass reinforced, rated UL 94V-0
 Insulator color: Black
 Contacts: Brass
 Shell: Steel, Tin plated
 Hardware: Brass, Nickel plated
 Plating: Gold flash over Nickel underplate overall
 Electrical: Current rating: 10, 20, 30 or 40 Amps max. (See Chart)
 Insulation resistance: 5,000 Mohms min
 Dielectric withstanding voltage: 1,000 VAC for 1 minute
 Temperature Rating: Operating temperature: -55°C to +125°C
 Environmental: Lead free, RoHS compliant
 Recommended soldering temp: 235°C for 5 seconds



UNLESS OTHERWISE SPECIFIED ALL DIMENSIONS ARE INCHES [MM]		TOLERANCES: EXCEPT AS NOTED	
INCHES		HOLES	
.X	±.10	Ø.X	±.10
.XX	±.020	Ø.XXX	±.015
.XXX	±.015	Ø.XXX	±.010
APPROVALS		DATE	
DRAWN	DY	7/28/10	
CHECKED			
APPROVED			
SIZE	PART NO.	TITLE	REV.
X	D7W2-PLP-X-2-BL	D-SUB, MALE POWER, D7W2, RIGHT ANGLE, PCB 10A, 20A, 30A OR 40A	-
REF: S0009T	SCALE: NTS	SHEET 1 OF 1	