



# TAI-SAW TECHNOLOGY CO., LTD.

No. 3, Industrial 2nd Rd., Ping-Chen Industrial District,  
Taoyuan, 324, Taiwan, R.O.C.

TEL: 886-3-4690038 FAX: 886-3-4697532

E-mail: [tstsales@mail.taisaw.com](mailto:tstsales@mail.taisaw.com) Web: [www.taisaw.com](http://www.taisaw.com)

## Approval Sheet For Product Specification

Issued Date:

Product Name: SAW IF Filter 426.5 MHz

TST Parts No.: TB0141A

Customer Parts No.: \_\_\_\_\_

Company: _____
Division: _____
Approved by : _____
Date: _____

Checked by: Asin Lin

Approval by: Francis Chen

Date: Sep. 28. 2006



# TAI-SAW TECHNOLOGY CO., LTD.

No. 3, Industrial 2nd Rd., Ping-Chen Industrial District,  
Taoyuan, 324, Taiwan, R.O.C.

TEL: 886-3-4690038 FAX: 886-3-4697532

E-mail: [tstsales@mail.taisaw.com](mailto:tstsales@mail.taisaw.com) Web: [www.taisaw.com](http://www.taisaw.com)

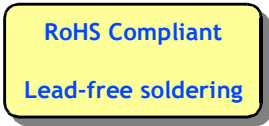
## 426.5MHz IF SAW Filter

MODEL NO.: TB0141A

REV. NO.:2

### A. MAXIMUM RATING:

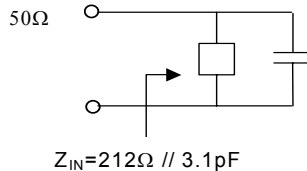
1. Input Power Level: 5 dBm
2. Operating Temperature: -20°C to 75°C
3. Storage Temperature: -35°C to 85°C



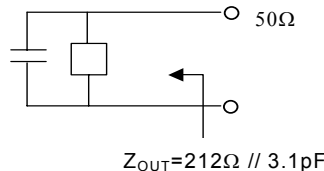
### B. ELECTRICAL CHARACTERISTICS:

Item	Unit	Min.	Type.	Max.	Note
Center frequency, <b>F<sub>c</sub></b>	MHz		426.5		
Insertion Loss, <b>IL<sub>min</sub></b>	dB		3.8	5.5	
Passband Ripple in <b>F<sub>c</sub>±120KHz</b> ,	dB		0.8	2	
Attenuation:(Reference level from Min IL)					
<b>F<sub>c</sub> -19.92 to F<sub>c</sub> -5.92 MHz</b>	dB	40	42		
<b>F<sub>c</sub> -5.92 to F<sub>c</sub> -1.08 MHz</b>	dB	15	25		
<b>F<sub>c</sub> + 1 to F<sub>c</sub> + 8.08 MHz</b>	dB	10	16		
<b>F<sub>c</sub> + 8.08 to F<sub>c</sub> + 116.06 MHz</b>	dB	33	37		

Source impedance

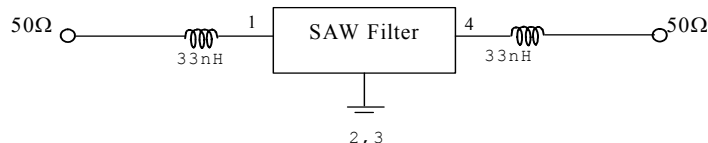


Load impedance

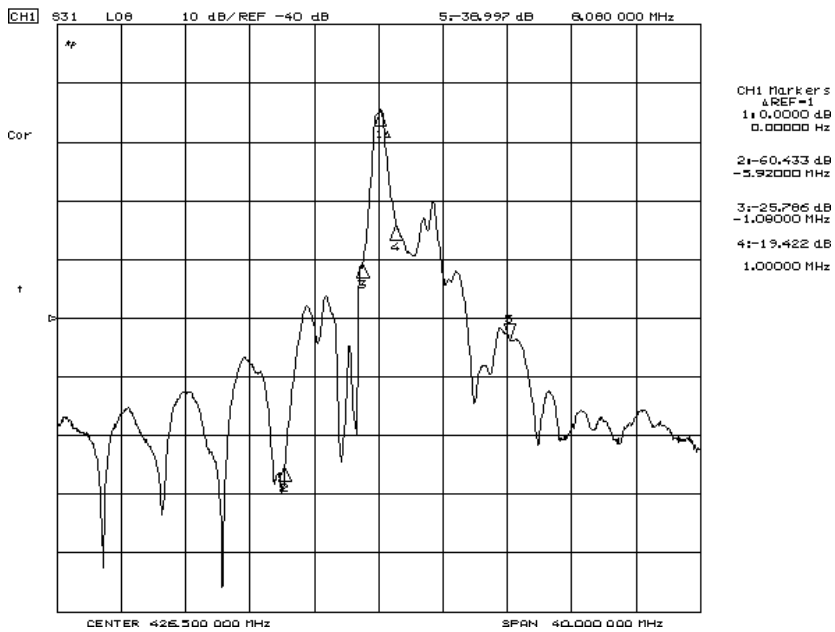
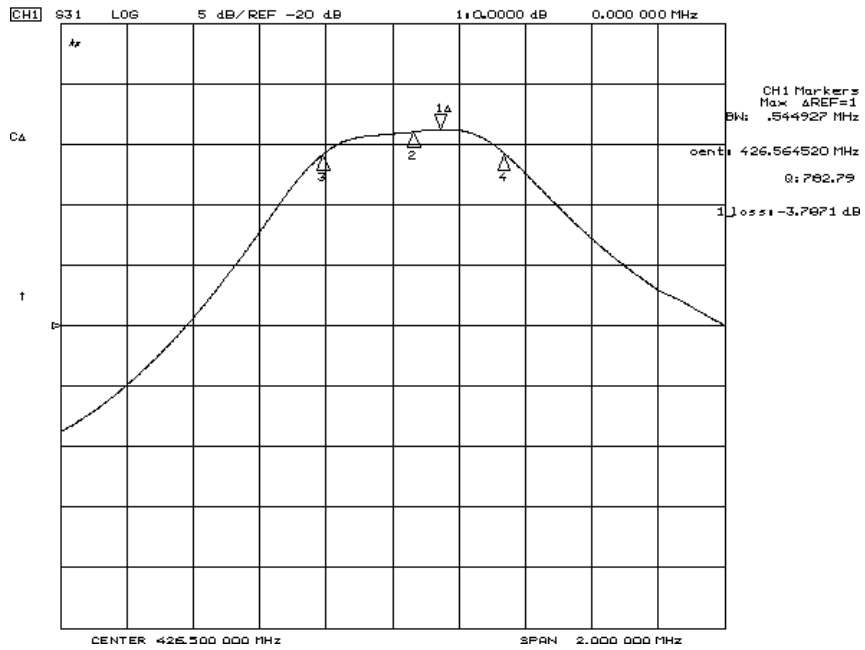


### C. MEASUREMENT CIRCUIT:

HP Network analyzer



## D. Frequency Characteristics :



**E.OUTLINE DRAWING:**

