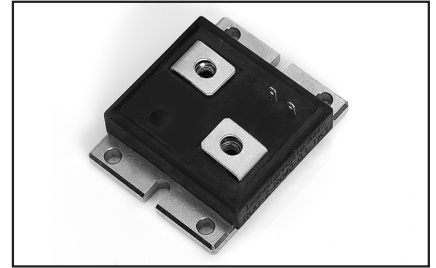


High Precision Metal Foil Resistors

- 250W permanent power at 85 °C
- 50J pulse power for 10 ms
- Extremely low resistance values down to 0.5 mΩ
- TCR-values from 1 ppm/°C
- Max. current limit 387 A
- High current sensing
- Measurement equipment
- Reference resistors in laboratories
- Current source
- Laboratory power supply
- DKD calibration upon request



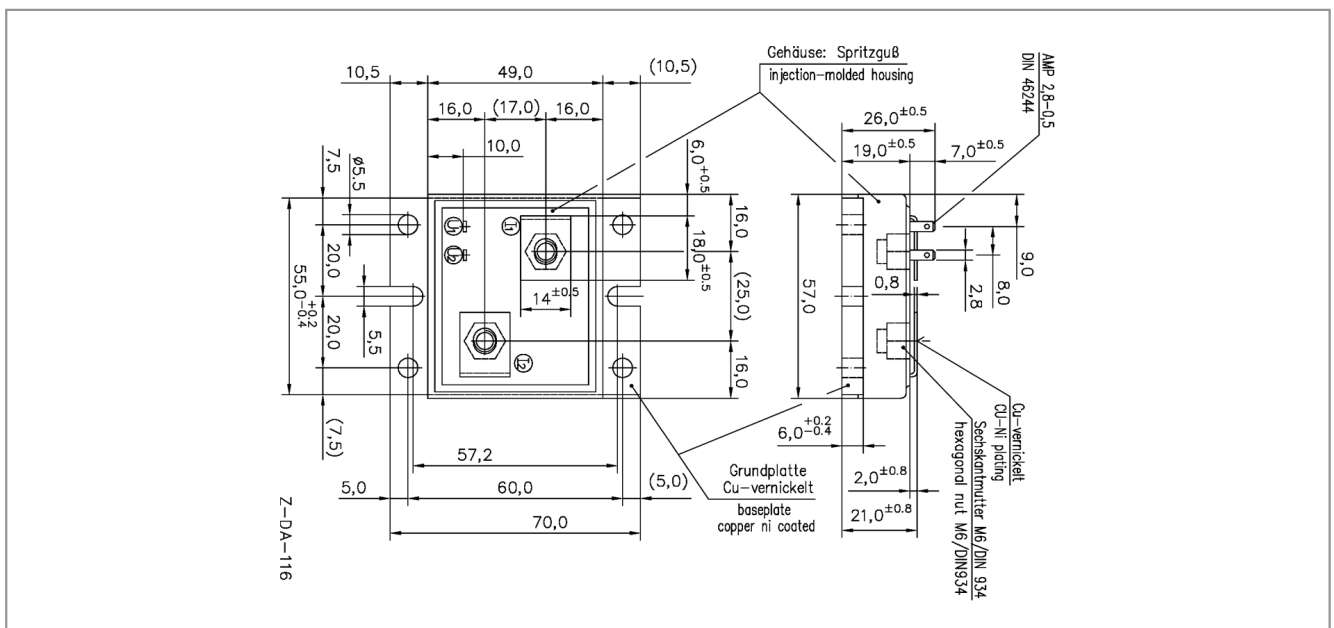
GENERAL SPECIFICATIONS

Model (Type)	Resistance Value	Tolerance	Temperature Coefficient (TCR)
RUG-Z	0.5, 1, 2, 5, 10, 20, 50, 100, 200, 500mΩ 1, 10, 100Ω	±0.1%, ±1%	< ±1 / ±3 / ±5 / ±10 ppm/°C (20°C to 60°C)

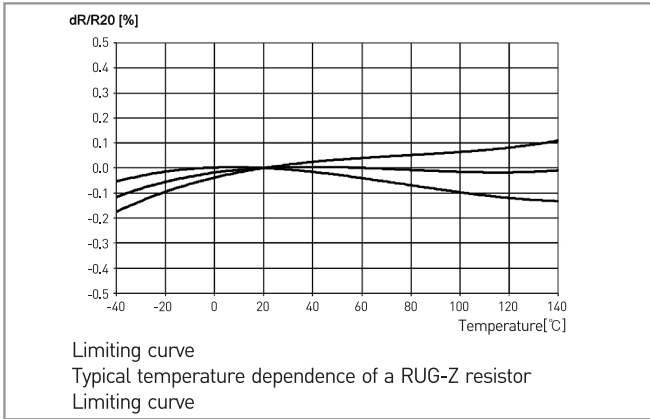
CHARACTERISTICS

Resistance Values	0.5, 1, 2, 5, 10, 20, 50, 100, 200, 500mΩ 1, 10, 100Ω
Tolerance	±0.1%, ±1%
Temperature Coefficient	< ±1 / ±3 / ±5 / ±10 ppm/°C (20°C to 60°C)
Applicable Temperature Range	-55°C to +110°C
Load Capacity	250 W
Single Pulse Power Load	50J (tp < 10ms)
Thermal Resistance to Copper Base Plate	(Rthi) < 0.1 °C/W
Dielectric Withstanding Voltage	500 VAC
Inductance	< 10 nH
Stability (Nominal load)	< 0.2 % After 2000hours (TK= 85 °C)

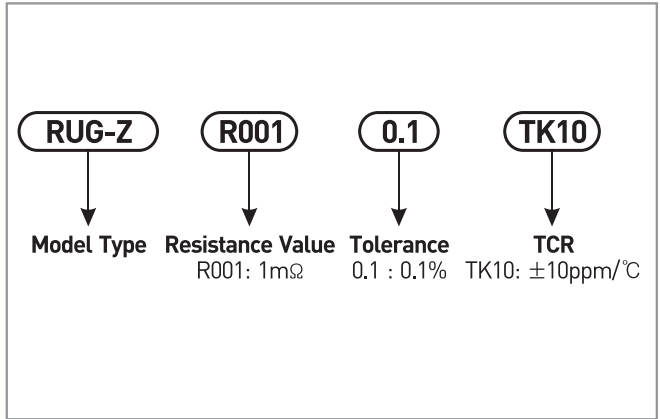
DIMENSIONS [mm]



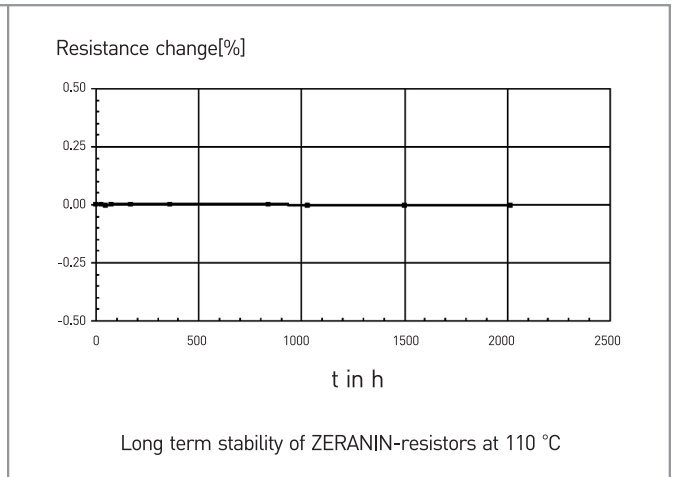
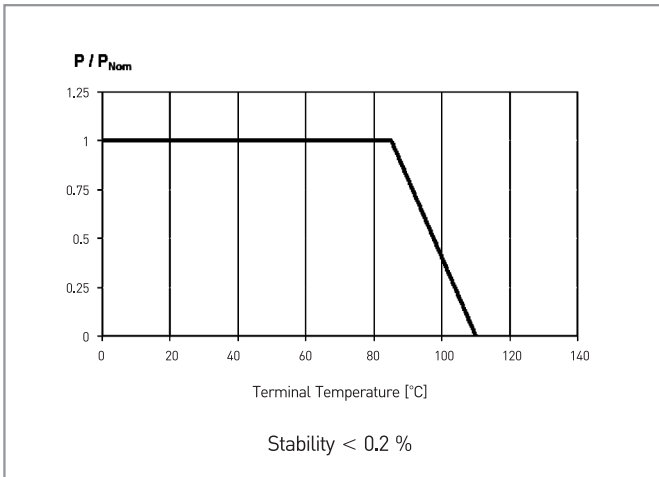
TCR



ORDERING PROCEDURE EXAMPLE

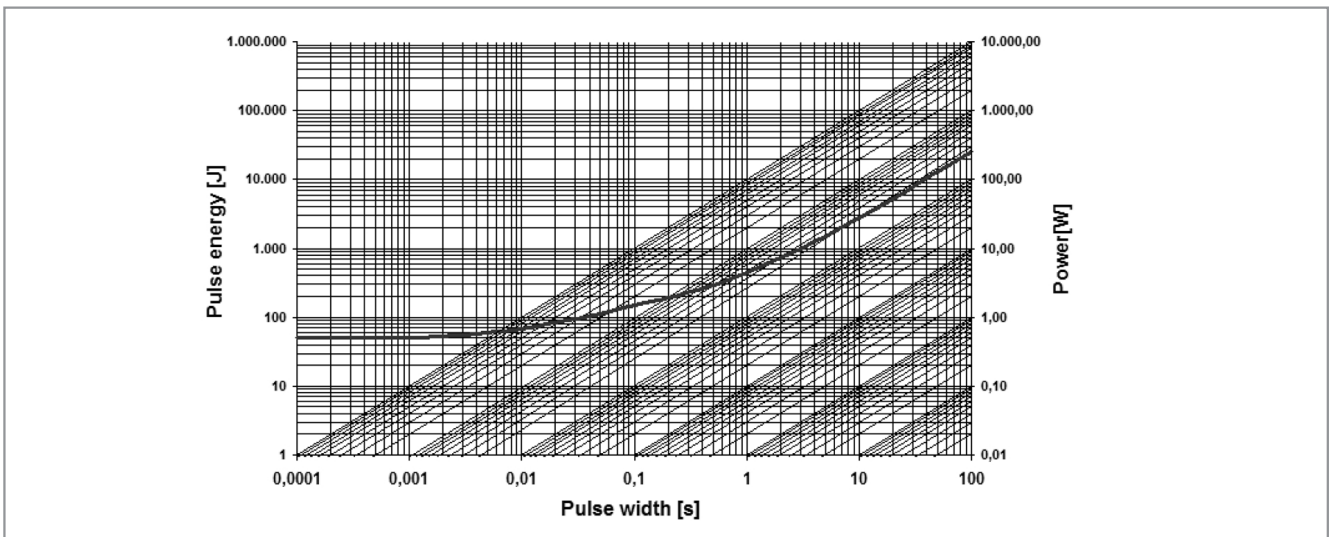


DERATING CURVE AND LONG TERM STABILITY



* Warranty: All information regarding the suitability, workability and applicability of our products, all technical advice and other information are provided to the best of our knowledge and belief, but shall not discharge the buyer from his own examinations and tests

MAXIMUM PULSE ENERGY VERSUS PULSE POWER FOR CONTINUOUS OPERATION



* This curve is only valid for the resistance value R005. The shape of the curve in the range below 0.1 sec will be different for other resistance values. Therefore a separate qualification should be made for pulse power close to the above curve.