

# Control integrated Power System (CIPOS™)

IKCS22F60AA

IKCS22F60AB

<http://www.infineon.com/cipos>

Power Management & Drives

---

<b>Revision History:</b>	<b>2007-10</b>	Rev.1.2
Previous Version:	1.1	
Page	Subjects (major changes since last revision)	
12	Changed switching energies for VDC = 300 V	

---

**Authors: O. Hellmund, W. Scholz, W. Frank**

**Edition 2007-07**

**Published by  
Infineon Technologies AG  
85579 Neubiberg, Germany**

**© Infineon Technologies AG 10/8/07.**

**All Rights Reserved.**

**Attention please!**

The information given in this data sheet shall in no event be regarded as a guarantee of conditions or characteristics ("Beschaffenhheitsgarantie"). With respect to any examples or hints given herein, any typical values stated herein and/or any information regarding the application of the device, Infineon Technologies hereby disclaims any and all warranties and liabilities of any kind, including without limitation warranties of non-infringement of intellectual property rights of any third party.

#### **Information**

For further information on technology, delivery terms and conditions and prices please contact your nearest Infineon Technologies Office or representatives (<http://www.infineon.com>).

#### **Warnings**

Due to technical requirements components may contain dangerous substances. For information on the types in question please contact your nearest Infineon Technologies Office or representatives.

Infineon Technologies Components may only be used in life-support devices or systems with the express written approval of Infineon Technologies, if a failure of such components can reasonably be expected to cause the failure of that life-support device or system, or to affect the safety or effectiveness of that device or system. Life support devices or systems are intended to be implanted in the human body, or to support and/or maintain and sustain and/or protect human life. If they fail, it is reasonable to assume that the health of the user or other persons may be endangered.

**TrenchStop®** is a registered trademark of Infineon Technologies AG.

**CIPOS™, CoolMOS™, CoolSET™, DuoPack™, EmCon™ and thinQ!™** are trademarks of Infineon Technologies AG.

**Table of Contents**

<b>CIPOS™ Control integrated Power System .....</b>	<b>4</b>
<b>Features .....</b>	<b>4</b>
<b>Target Applications .....</b>	<b>4</b>
<b>Description .....</b>	<b>4</b>
<b>System Configuration .....</b>	<b>4</b>
<b>Internal Electrical Schematic .....</b>	<b>5</b>
<b>Pin Assignment .....</b>	<b>6</b>
<b>Pin Description .....</b>	<b>6</b>
/HIN1,2,3 and /LIN1,2,3 (Low side and high side control pins, Pin 15 - 20) .....	6
EN (enable, Pin 24) .....	7
ITRIP (Over-current detection function, Pin 21) .....	7
VDD, VSS (control side supply and reference, Pin 22, 23) .....	7
VB1,2,3 and VS1,2,3 (High side supplies, Pin 1, 2, 4, 5, 7, 8) .....	7
VRU, VRV, VRW (low side emitter, Pin 12, 13, 14) .....	7
V+ (positive bus input voltage, Pin 10) .....	7
<b>Absolute Maximum Ratings .....</b>	<b>8</b>
<b>Module Section .....</b>	<b>8</b>
<b>IGBT and Diode Section .....</b>	<b>8</b>
<b>Control Section .....</b>	<b>9</b>
<b>Recommended Operation Conditions .....</b>	<b>9</b>
<b>Static Parameters .....</b>	<b>10</b>
<b>Dynamic Parameters .....</b>	<b>11</b>
<b>Integrated Components .....</b>	<b>12</b>
<b>Circuit of a Typical Application .....</b>	<b>12</b>
<b>Test Circuits .....</b>	<b>14</b>

# CIPOS™

## Control integrated Power System

*Single In-Line Intelligent Power Module*

*3Φ-bridge 600V / 22A @ 25°C*

### Features

- Fully isolated Single In-Line molded module
- Infineon TrenchStop® IGBTs with lowest  $V_{CE(sat)}$
- Optimal adapted EmCon™ diode for low EMI
- SOI gate driver with bootstrap diode and capacitor
- Rugged SOI gate driver technology with stability against transient and negative voltage
- Temperature monitor and over temperature shutdown
- Overcurrent shutdown
- Undervoltage lockout at all channels
- Matched propagation delay for all channels
- Low side emitter pins accessible for all phase current monitoring (open emitter)
- Cross-conduction prevention
- Lead-free terminal plating; RoHS compliant
- Qualified according to JEDEC<sup>1</sup> (high temperature stress tests for 500h) for target applications

### Target Applications

- Washing machines
- Consumer Fans and Consumer Compressors

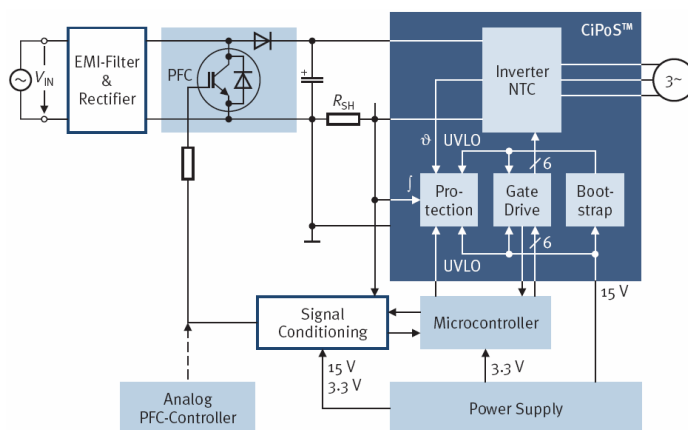
### Description

The CIPOS™ module family offers the chance for integrating various power and control components to increase reliability, optimize PCB size and system costs.

This SIL-IPM is designed to control AC motors in variable speed drives for applications like air conditioning, compressors and washing machines. The package concept is specially adapted to power applications, which need extremely good thermal conduction and electrical isolation, but also EMI-save control and overload protection. The features of Infineon TrenchStop® IGBTs and EmCon™ diodes are combined with a new optimized Infineon SOI gate driver for excellent electrical performance.

### System Configuration

- 3 halfbridges with TrenchStop® IGBT & FW-EmCon™ diodes
- 3Φ SOI gate driver
- Bootstrap diodes for high side supply
- Integrated 100nF bootstrap capacitance
- Temperature sensor, passive components for adaptations
- Isolated heatsink
- Creepage distance 3.1mm



<sup>1</sup> J-STD-020 and JESD-022

Internal Electrical Schematic

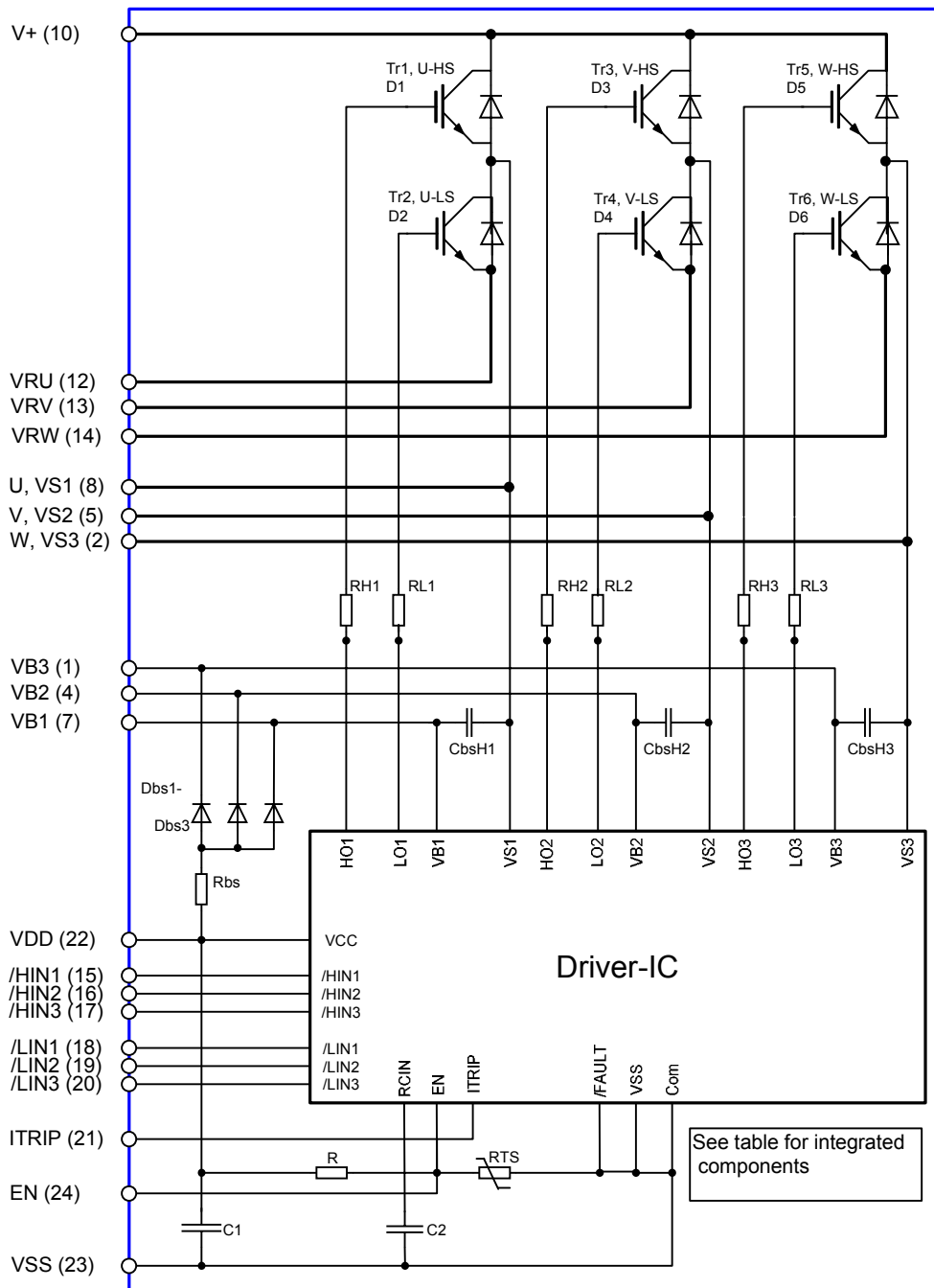


Figure 1: Internal Schematic

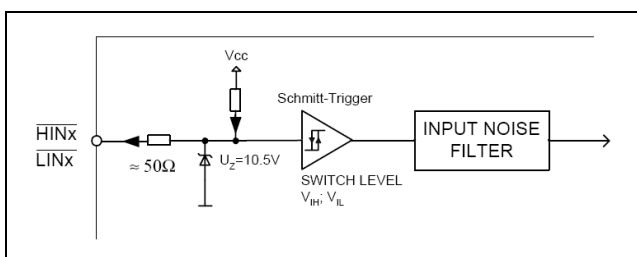
## Pin Assignment

Pin Number	Pin Name	Pin Description
1	VB3	high side floating IC supply voltage
2	W,VS3	motor output W, high side floating IC supply offset voltage
3	n.a.	None
4	VB2	high side floating IC supply voltage
5	V,VS2	motor output V, high side floating IC supply offset voltage
6	n.a.	None
7	VB1	high side floating IC supply voltage
8	U,VS1	motor output U, high side floating IC supply offset voltage
9	n.a.	None
10	V+	positive bus input voltage
11	n.a.	None
12	VRU	low side emitter
13	VRV	low side emitter
14	VRW	low side emitter
15	/HIN1	input gate driver high side 1/U
16	/HIN2	input gate driver high side 2/V
17	/HIN3	input gate driver high side 3/W
18	/LIN1	input gate driver low side 1/U
19	/LIN2	input gate driver low side 2/V
20	/LIN3	input gate driver low side 3/W
21	ITRIP	input overcurrent shutdown
22	VDD	module control supply
23	VSS	module negative supply
24	EN	input logic enable, output temperature monitoring

## Pin Description

### /HIN1,2,3 and /LIN1,2,3 (Low side and high side control pins, Pin 15 - 20)

These pins are active low and they are responsible for the control of the integrated IGBT. The Schmitt-trigger input threshold of them are



**Figure 2: Input pin structure**

such to guarantee LSTTL and CMOS compatibility down to 3.3V controller outputs. Pull-up resistor of about 75 kOhm is internally provided to pre-bias inputs during supply start-up and a zener clamp is provided for pin protection purposes. Input schmitt-trigger and noise filter provide beneficial noise rejection to short input pulses.

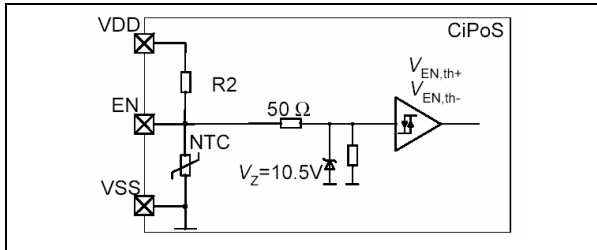
It is recommended for proper work of CIPOS™ not to provide input pulse-width lower than 1us.

The integrated gate drive provides additionally a shoot through prevention capability which avoids the simultaneous on-state of two gate drivers of the same leg (i.e. HO1 and LO1, HO2 and LO2, HO3 and LO3).

A minimum deadtime insertion of typ 325ns is also provided, in order to reduce cross-conduction of the external power switches.

**EN (enable, Pin 24)**

The signal applied to pin EN controls directly the output stages. All outputs are set to LOW, if EN is at LOW logic level. The internal structure of the pin is the same as Figure 2 made exception of the switching levels of the Schmitt-Trigger, which are here  $V_{EN,TH+} = 2.1\text{ V}$  and  $V_{EN,TH-} = 1.32\text{ V}$ . The typical propagation delay time is  $t_{EN} = 700\text{ ns}$ .


**Figure 3: Internal Circuit at pin EN**

This pin may also be used for reading out the temperature close to the gate drive IC. Please refer to section “Integrated Components” for the specification of the integrated parts.

**ITRIP (Over-current detection function, Pin 21)**

CIPOS™ provides an over-current detection function by connecting the ITRIP input with the motor current feedback. The ITRIP comparator threshold (typ 0.45V) is referenced to VSS ground. A input noise filter (typ:  $t_{ITRIPMIN} = 225\text{ns}$ ) prevents the driver to detect false over-current events.

Over-current detection generates a hard shut down of all outputs of the gate driver after the shutdown propagation delay of typically 690ns.

The fault-clear time is set to typically to 2ms.

**VDD, VSS (control side supply and reference, Pin 22, 23)**

VDD is the low side supply and it provides power both to input logic and to low side output power stage. Input logic is referenced to VSS ground as well as the under-voltage detection circuit.

The under-voltage circuit enables the device to operate at power on when a supply voltage of at least a typical voltage of  $V_{DDUV+} = 11.9\text{ V}$  is at least present.

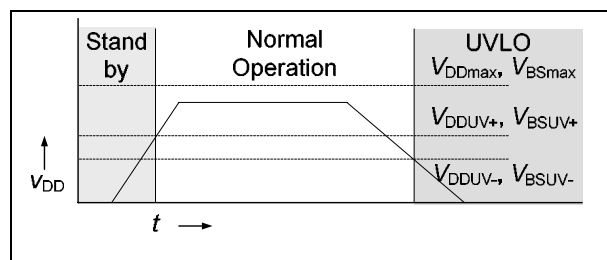
The IC shuts down all the gate drivers power outputs, when the VCC supply voltage is below  $V_{DDUV-} = 10.3\text{ V}$ . This prevents the external power

switches from critically low gate voltage levels during on-state and therefore from excessive power dissipation.

**VB1,2,3 and VS1,2,3 (High side supplies, Pin 1, 2, 4, 5, 7, 8)**

VB to VS is the high side supply voltage. The high side circuit can float with respect to VSS following the external high side power device emitter/source voltage.

Due to the low power consumption, the floating driver stage is supplied by an integrated bootstrap circuit connected to VDD. This includes also integrated bootstrap capacitors of 100 nF at each floating supply, which are located very close to the gate drive circuit.


**Figure 4: Operating states**

The under-voltage detection operates with a rising supply threshold of typical  $V_{BSUV+} = 11.9\text{ V}$  and a falling threshold of  $V_{DDUV-} = 10.3\text{ V}$  according to Figure 4.

VS1,2,3 provide a high robustness against negative voltage in respect of VSS of -50 V. This ensures very stable designs even under rough conditions.

**VRU, VRV, VRW (low side emitter, Pin 12, 13, 14)**

The low side emitters are available for current measurements of each phase leg. It is recommended to keep the connection to pin VSS as short as possible in order to avoid unnecessary inductive voltage drops.

**V+ (positive bus input voltage, Pin 10)**

The high side IGBT are connected to the bus voltage. It is recommended, that the bus voltage does not exceed 500 V.

## Absolute Maximum Ratings

( $T_c = 25^\circ\text{C}$ , if not stated otherwise)

### Module Section

Description	Condition	Symbol	Value		Unit
			min	max	
Storage temperature range		$T_{\text{stg}}$	-40	125	$^\circ\text{C}$
Operating temperature control PCB <sup>1</sup>		$T_{\text{PCB}}$	-	125	$^\circ\text{C}$
Solder temperature	Wave soldering, 1.6mm (0.063in.) from case for 10s	$T_{\text{sol}}$	-	260	$^\circ\text{C}$
Insulation test voltage	RMS, $f=50\text{Hz}$ , $t=1\text{min}$	$V_{\text{ISOL}}$	2500	-	V
Mounting torque	M3 screw and washer	$M_S$	-	0.6	Nm
Mounting pressure on surface	Package flat on mounting surface	$N_{\text{MC}}$	-	150	N/mm <sup>2</sup>
Creepage distance		$d_s$	3.1	-	Mm

### IGBT and Diode Section

Description	Condition	Symbol	Value		Unit
			min	max	
Collector-Emitter breakdown voltage <sup>2</sup>	$V_{\text{GE}}=0\text{V}$ , $I_C = 0.25\text{mA}$ , $t_p < 250\text{ns}$	$V_{(\text{BR})\text{CES}}$	600	-	V
DC output current	$T_c = 25^\circ\text{C}$ , $T_{\text{vj}} < 150^\circ\text{C}$ $T_c = 80^\circ\text{C}$ , $T_{\text{vj}} < 150^\circ\text{C}$	$I_u, I_v, I_w$	-22 -15	22 15	A
Repetitive peak collector current	$T_p$ limited by $T_{\text{vjmax}}$	$I_u, I_v, I_w$	-45	45	A
Short circuit withstand time <sup>3</sup>	$V_{\text{DD}} = 15\text{V}$ , $V_{\text{DC}} \leq 400\text{V}$ , $T_j \leq 150^\circ\text{C}$	$t_{\text{sc}}$	-	5	$\mu\text{s}$
Power dissipation per IGBT	$T_c = 25^\circ\text{C}$	$P_{\text{tot}}$	-	59	W
Operating junction temperature range	IGBT Diode	$T_{\text{vjI}}$ $T_{\text{vjD}}$	-40 -40	150 150	$^\circ\text{C}$

<sup>1</sup> Monitored by pin 24

<sup>2</sup> For static operation with biased High-Side VS is reduced by 50V.

<sup>3</sup> Allowed number of short circuits: <1000; time between short circuits: >1s.



Description	Condition	Symbol	Value			Unit
			min	typ	max	
Single IGBT thermal resistance, junction-case		$R_{thJC}$	-	-	2.1	K/W
Single diode thermal resistance, junction-case		$R_{thJCD}$	-	-	3.0	

**Control Section**

Description	Condition	Symbol	Value		Unit
			min	max	
Module supply voltage		$V_{DD}$	-1	20	V
High side floating supply voltage ( $V_B$ vs. $V_S$ )		$V_{BS}$	-1	20	
High side floating IC supply offset voltage	$t_p < 250\text{ns}$ $t_p \geq 250\text{ns}$ $t_p < 500\text{ns}$ $t_p \geq 500\text{ns}$	$V_{S1,2,3}$	- - $V_{DD}-V_{BS}-50$ $V_{DD}-V_{BS}-6$	600 550 - -	V
Input voltage	LIN, HIN, EN, ITRIP	$V_{in}$	-1	10	V
Operating junction temperature <sup>1</sup>		$T_{J,IC}$	-	125	
Max. switching frequency		$f_{PWM}$	-	20	kHz

**Recommended Operation Conditions**

All voltages are absolute voltages referenced to  $V_{SS}$  -Potential unless otherwise specified.

Description	Symbol	Value		Unit
		min	max	
High side floating supply offset voltage	$V_S$	-3	500	V
High side floating supply voltage ( $V_B$ vs. $V_S$ )	$V_{BS}$	12.5	17.5	
High side output voltage ( $V_{HO}$ vs. $V_S$ )	$V_{HO}$	0	$V_{BS}$	
Low side power supply	$V_{DD}$	12.5	17.5	
Logic input voltages LIN,HIN,EN,ITRIP	$V_{IN}$	0	5	

<sup>1</sup> Monitored by pin 24

**Static Parameters**

 (T<sub>c</sub> = 25°C, if not stated otherwise)

Description	Condition	Symbol	Value			Unit
			min	typ	max	
Collector-Emitter saturation voltage	V <sub>DD</sub> = 15V, I <sub>out</sub> = +/- 15A 25°C 150°C	V <sub>CE(sat)</sub>	- -	1.65 tbd	2.15	V
Diode forward voltage	V <sub>DD</sub> = 0V, I <sub>out</sub> = +/- 15A 25°C 150°C	V <sub>F</sub>	- -	1.75 tbd	2.05	V
Zero gate voltage collector current <sup>1</sup>	V <sub>CE</sub> = 600V, V <sub>GE</sub> = 0V t <sub>p</sub> < 250ns T <sub>j</sub> = 25°C T <sub>j</sub> = 150°C	I <sub>CES</sub>	- -	- -	tbd tbd	μA
Short circuit collector current <sup>1</sup>	V <sub>DD</sub> = 15V, t <sub>SC</sub> ≤ 5μs V <sub>CC</sub> = 400V, T <sub>j</sub> ≤ 150°C	I <sub>C(SC)</sub>	-	95	-	A
Logic "0" input voltage (LIN,HIN)		V <sub>IH</sub>	1.7	2.1	2.4	V
Logic "1" input voltage (LIN,HIN)		V <sub>IL</sub>	0.7	0.9	1.1	V
EN positive going threshold		V <sub>EN,TH+</sub>	1.9	2.1	2.3	V
EN negative going threshold		V <sub>EN,TH-</sub>	1.1	1.32	1.5	V
ITRIP positive going threshold		V <sub>IT,TH+</sub>	360	450	540	mV
ITRIP input hysteresis		V <sub>IT,HYS</sub>	60	85	-	mV
V <sub>DD</sub> and V <sub>BS</sub> supply undervoltage positive going threshold		V <sub>DDUV+</sub> V <sub>BSUV+</sub>	11.0	12.0	12.8	V
V <sub>DD</sub> and V <sub>BS</sub> supply undervoltage negative going threshold		V <sub>DDUV-</sub> V <sub>BSUV-</sub>	9.5	10.3	11.0	V
V <sub>CC</sub> and V <sub>BS</sub> supply undervoltage lockout hysteresis		V <sub>DDUVH</sub> V <sub>BSUVH</sub>	1.2	1.6	-	V
Input clamp voltage (/HIN, /LIN, EN, ITRIP)		V <sub>INCLAMP</sub>	9.0	10.1	13.0	V
Quiescent V <sub>Bx</sub> supply current (V <sub>Bx</sub> only)	V <sub>IN</sub> = low	I <sub>QB</sub>	-	300	550	μA
Quiescent V <sub>DD</sub> supply current (V <sub>DD</sub> only)	V <sub>IN</sub> = float	I <sub>QDD</sub>	-	2.1	3.0	mA
Input bias current	V <sub>IN</sub> = 5V	I <sub>IN+</sub>	-	43	100	μA
Input bias current	V <sub>IN</sub> = 0V	I <sub>IN-</sub>	-	100	200	μA
ITRIP Input bias current	V <sub>ITRIP</sub> = 5V	I <sub>ITRIP+</sub>	-	62	120	μA
EN Input bias current	V <sub>EN</sub> = 5V	I <sub>EN+</sub>	-	62	120	μA
Leakage current of high side	V <sub>S</sub> = 550V, T <sub>j,IC</sub> = 125°C	I <sub>LVS</sub>	-	30	-	μA

<sup>1</sup> Allowed number of short circuits: <1000; time between short circuits: >1s.

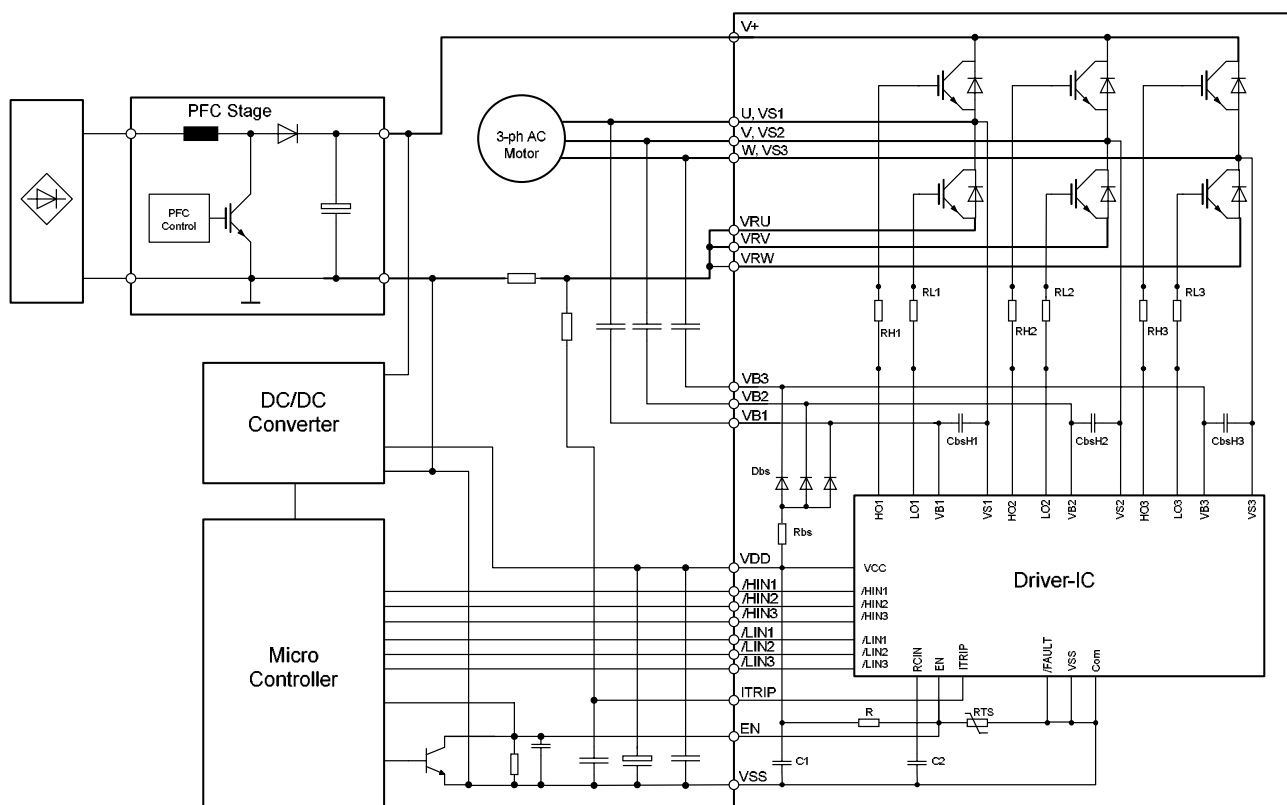
## Dynamic Parameters

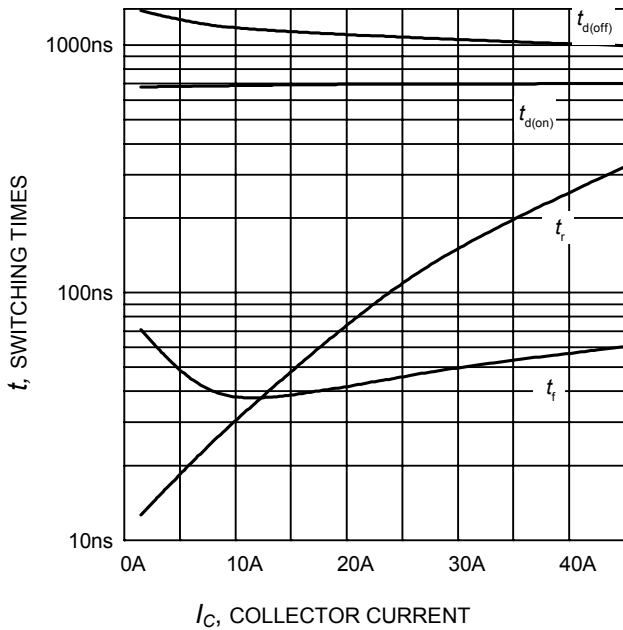
( $T_c = 25^\circ\text{C}$ , if not stated otherwise)

Description	Condition	Symbol	Value			Unit
			min	typ	max	
Turn-on propagation delay	$V_{\text{LIN,HIN}} = 0\text{V}$ ; $I_{\text{out}} = 15\text{A}$ , $V_{\text{DC}} = 300\text{V}$	$t_{\text{d(on)}}$	-	656	-	ns
Turn-on rise time	$I_{\text{out}} = 15\text{A}$ , $V_{\text{DC}} = 300\text{V}$ $V_{\text{LIN,HIN}} = 5\text{V}$	$t_r$	-	40	-	ns
Turn-off propagation delay	$V_{\text{LIN,HIN}} = 5\text{V}$ ; $I_{\text{out}} = 15\text{A}$ , $V_{\text{DC}} = 300\text{V}$	$t_{\text{d(off)}}$	-	1051	-	ns
Turn-on fall time	$I_{\text{out}} = 15\text{A}$ , $V_{\text{DC}} = 300\text{V}$ $V_{\text{LIN,HIN}} = 0\text{V}$	$t_f$	-	32	-	ns
Shutdown propagation delay ENABLE	$V_{\text{EN}} = 0\text{V}$ , $I_u, I_v, I_w = 15\text{A}$	$t_{\text{EN}}$	-	Tbd	-	ns
Shutdown propagation delay ITRIP	$V_{\text{ITRIP}} = 1\text{V}$ , $I_u, I_v, I_w = 15\text{A}$	$t_{\text{ITRIP}}$	-	tbd	-	ns
Input filter time ITRIP	$V_{\text{ITRIP}} = 1\text{V}$	$t_{\text{ITRIPmin}}$	155	225	380	ns
Input filter time at LIN for turn on and off and input filter time at HIN for turn on only	$V_{\text{LIN,HIN}} = 0\text{V} \& 5\text{V}$	$t_{\text{FILIN}}$	120	270	-	ns
Input filter time at HIN for turn off	$V_{\text{HIN}} = 5\text{V}$	$t_{\text{FILIN1}}$	-	200	-	ns
Input filter time at HIN for turn off	$V_{\text{HIN}} = 5\text{V}$	$t_{\text{FILIN2}}$	-	350	-	ns
Input filter time EN		$t_{\text{FILEN}}$	300	430	-	ns
Fault clear time after ITRIP-fault	$V_{\text{LIN,HIN}} = 0\text{V} \& 5\text{V}$ $V_{\text{ITRIP}} = 0\text{V}$	$t_{\text{FLTCLR}}$	-	4	-	ms
Min. deadtime between low side and high side		$DT_{\text{PWM}}$	1.5	-	-	$\mu\text{s}$
Deadtime of gate drive circuit		$DT_{\text{IC}}$		325		ns
IGBT Turn-on Energy (includes reverse recovery of diode)	$I_{\text{out}} = 15\text{A}$ , $V_{\text{DC}} = 300\text{V}$ $T_{\text{vj}} = 25^\circ\text{C}$ $T_{\text{vj}} = 150^\circ\text{C}$	$E_{\text{on}}$	-	700 846	-	$\mu\text{J}$
IGBT Turn-off Energy	$I_{\text{out}} = 15\text{A}$ , $V_{\text{DC}} = 300\text{V}$ $T_{\text{vj}} = 25^\circ\text{C}$ $T_{\text{vj}} = 150^\circ\text{C}$	$E_{\text{off}}$	-	355 431	-	$\mu\text{J}$
Diode recovery Energy	$I_{\text{out}} = 15\text{A}$ , $V_{\text{DC}} = 300\text{V}$ $T_{\text{vj}} = 25^\circ\text{C}$ $T_{\text{vj}} = 150^\circ\text{C}$	$E_{\text{rec}}$	-	72 148	-	$\mu\text{J}$

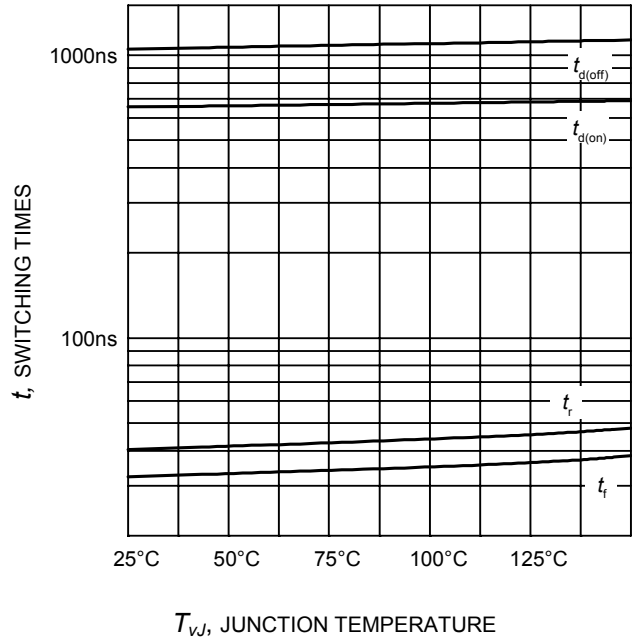
**Integrated Components**

Description	Condition	Symbol <sup>1</sup>	Value			Unit
			min	typ	max	
Resistor(Tol.: ± 5 %)		Rbs	-	10	-	Ω
Resistor (Tol.: ± 5 %)		R	-	24	-	kΩ
NTC Resistor (Tol.: ± 5 %)	T <sub>NTC</sub> = 25°C	RTS	-	100	-	
B-Constant of NTC (Tol.: 3%)	T <sub>NTC</sub> = 25°C	B25	-	4250	-	K
Bootstrap diode forward voltage	I <sub>FDbs</sub> = 100mA	V <sub>FDbs</sub>	-	1.9	-	V
Capacitor		C1	-	100	-	nF
Capacitor		C2	-	2.2	-	
Bootstrap Capacitor		CbsH <sub>x</sub>	-	100	-	
Gate Resistor (Tol.: 5%)		RL <sub>x</sub>	-	30	-	Ω

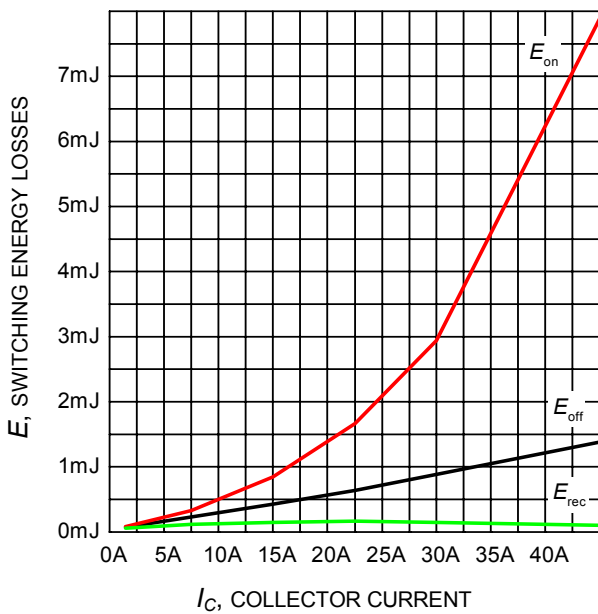
**Circuit of a Typical Application**

<sup>1</sup> Symbols according to Figure 1



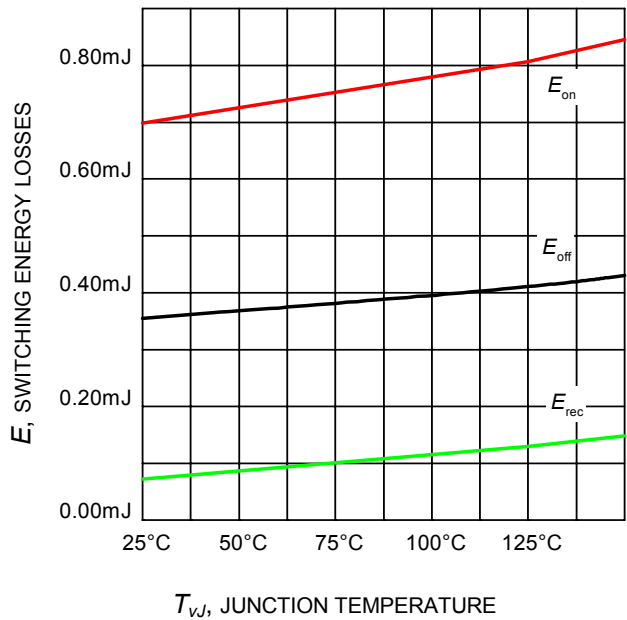
**Figure 5. Typical switching times as a function of collector current**  
 (inductive load,  $T_J = 150^\circ\text{C}$ ,  
 $V_{CE} = 300\text{V}$ ,  $V_{DD} = 15\text{V}$   
 Dynamic test circuit in Figure A)



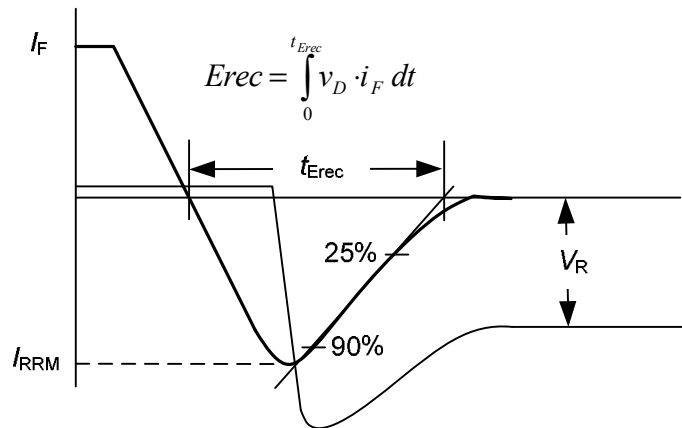
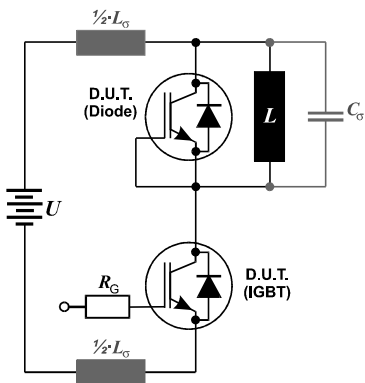
**Figure 6. Typical switching times as a function of junction temperature**  
 (inductive load,  $V_{CE} = 300\text{V}$ ,  
 $V_{DD} = 15\text{V}$ ,  $I_C = 15\text{A}$   
 Dynamic test circuit in Figure A)



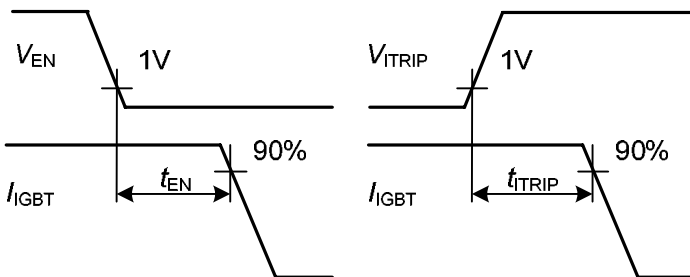
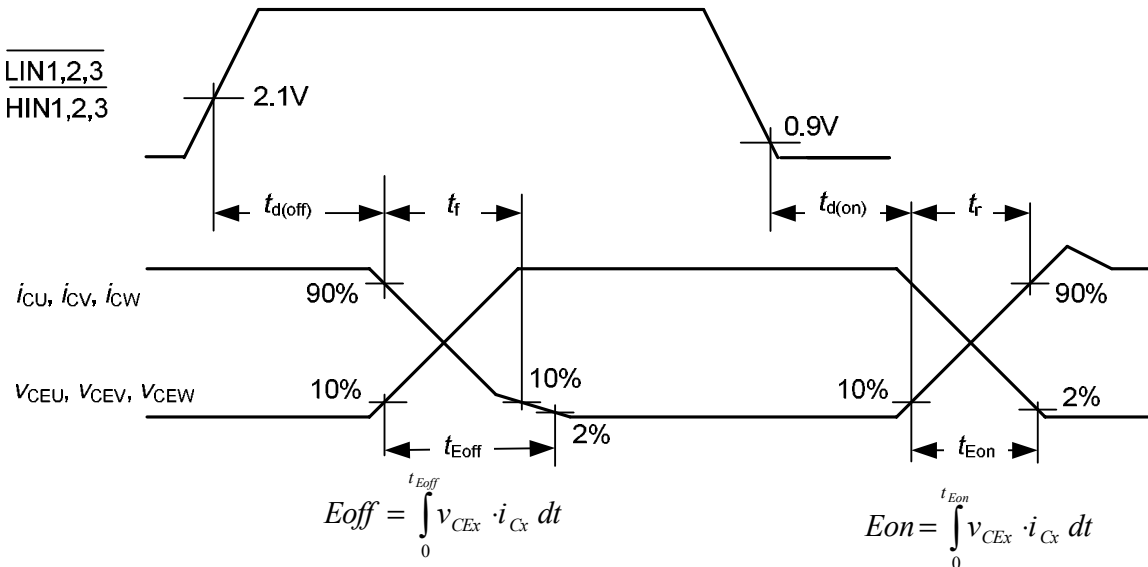
**Figure 7. Typical switching energy losses as a function of collector current**  
 (inductive load,  $T_J = 150^\circ\text{C}$ ,  
 $V_{CE} = 300\text{V}$ ,  $V_{DD} = 15\text{V}$   
 Dynamic test circuit in Figure A)

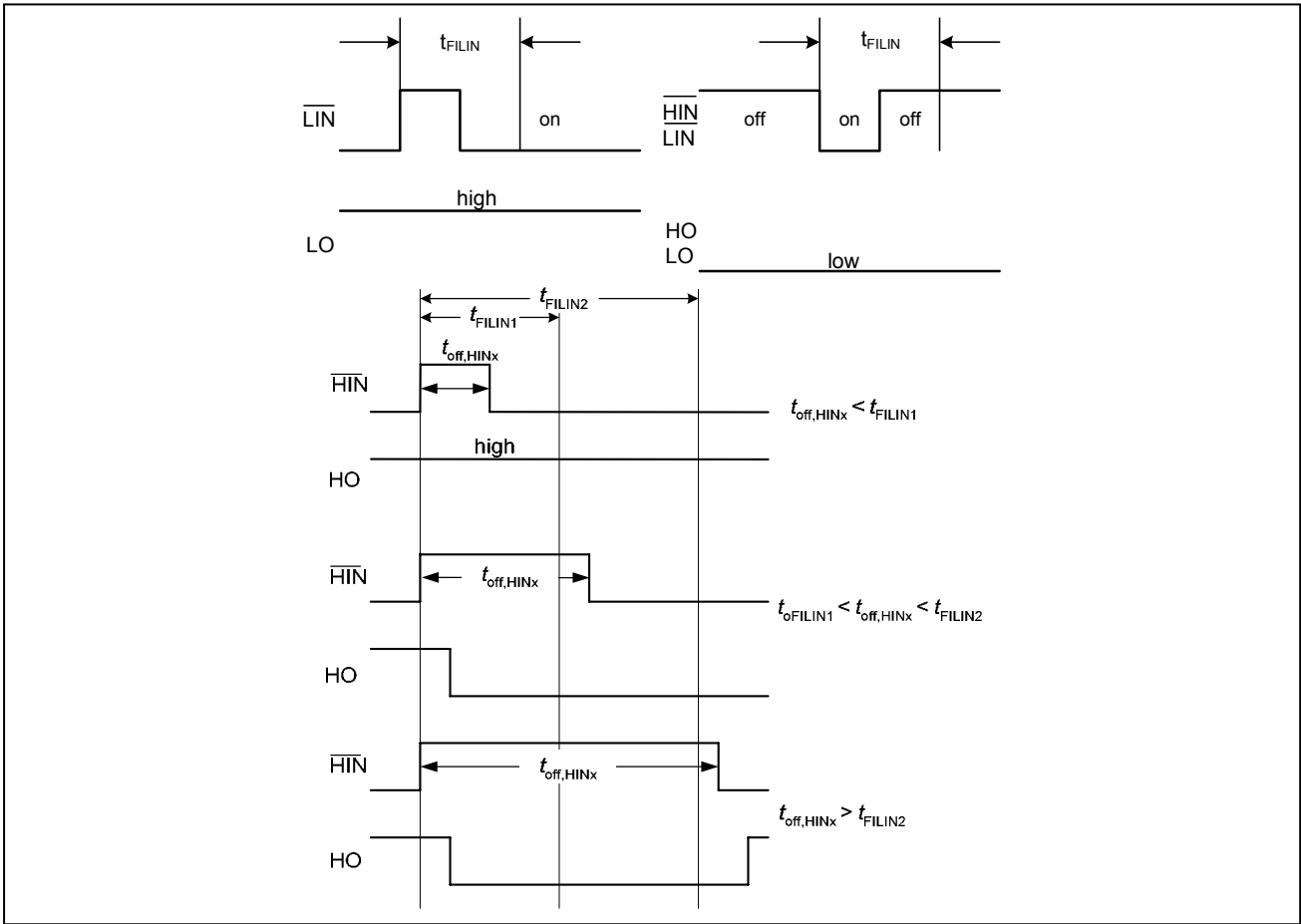


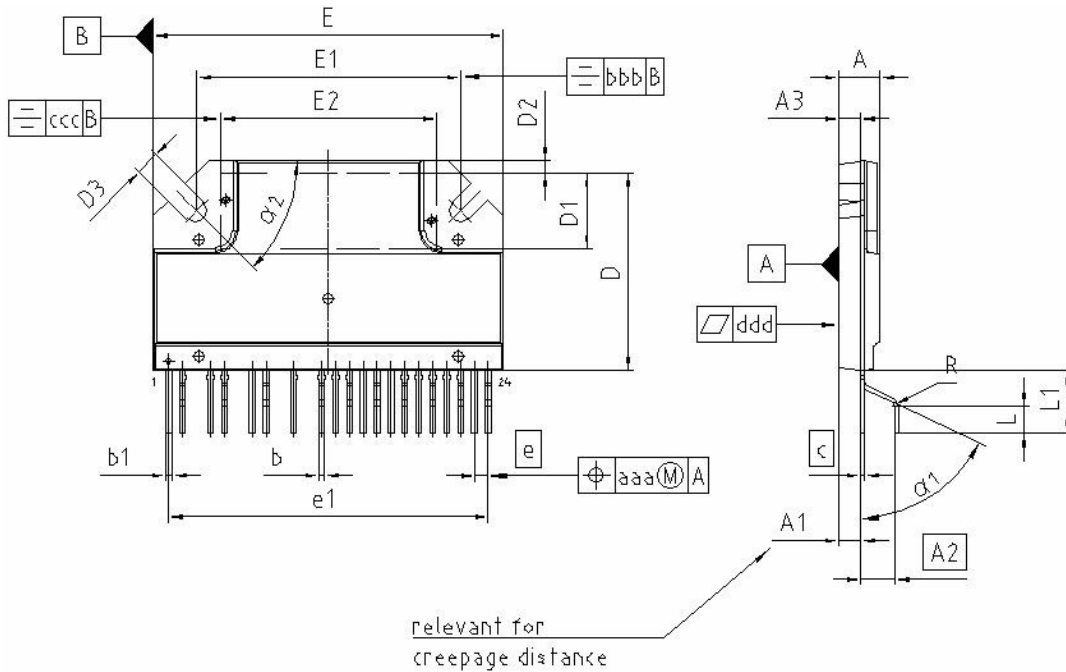
**Figure 8. Typical switching energy losses as a function of junction temperature**  
 (inductive load,  $V_{CE} = 300\text{V}$ ,  
 $V_{DD} = 15\text{V}$ ,  $I_C = 15\text{A}$   
 Dynamic test circuit in Figure A)

**Test Circuits**

**Figure A: Dynamic test circuit**

 Leakage inductance  $L_{\sigma} = 180\text{nH}$ 

 Stray capacitance  $C_{\sigma} = 39\text{pF}$ 
**Figure B: Definition of diodes switching characteristics**

**Figure C: Definition of Enable and ITIRP propagation delay**

**Figure D: Switching times definition and switching energy definition**


**Figure E: Short Pulse suppression**

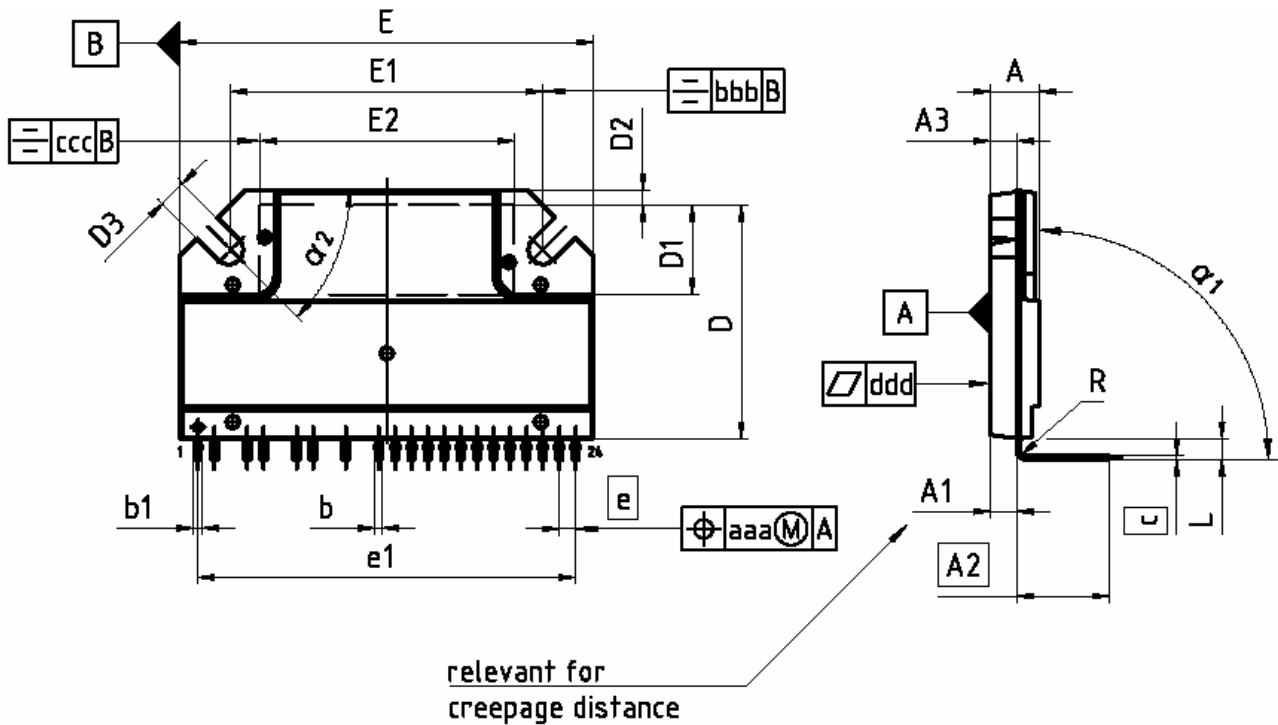
**Package Outline IKCS22F60AA**


DIM	MILLIMETERS		INCHES	
	MIN	MAX	MIN	MAX
A	5.900	6.100	0.232	0.240
A1	3.200		0.126	
A2	5.000		0.197	
A3	3.100	3.300	0.122	0.130
b	0.760	0.880	0.030	0.035
b1	-	1.120	-	0.044
c	0.460	0.580	0.018	0.023
D	30.100	30.300	1.185	1.193
D1	10.600	11.200	0.417	0.441
D2	1.300	2.300	0.051	0.091
D3	3.400	3.600	0.134	0.142
E	50.300	50.500	1.980	1.988
E1	37.900	38.100	1.492	1.500
E2	30.700	31.300	1.209	1.232
e	2.000		0.079	
e1	46.000		1.811	
N	20		20	
L	3.630	4.230	0.143	0.167
L1	8.700	9.300	0.343	0.366
R	0.300	0.900	0.012	0.035
aaa	0.400		0.016	
bbb	0.250		0.010	
ccc	0.500		0.020	
ddd	0.150		0.006	
$\alpha 1$	64.000	66.000	64.000	66.000
$\alpha 2$	44.000	46.000	44.000	46.000

Description	Condition	Symbol	Value			Unit
			min	typ	max	
Weight		$m_p$	-	17	-	g



## Package Outline IKCS22F60AB



DIM	MILLIMETERS		INCHES	
	MIN	MAX	MIN	MAX
A	5.900	6.100	0.232	0.240
A1	3.200		0.126	
A2	10.900	11.500	0.429	0.453
A3	3.100	3.300	0.122	0.130
b	0.760	0.880	0.030	0.035
b1	-	1.120	-	0.044
c	0.480	0.580	0.018	0.023
D	30.100	30.300	1.185	1.193
D1	10.800	11.200	0.417	0.441
D2	1.300	2.300	0.051	0.091
D3	3.400	3.600	0.134	0.142
E	50.300	50.500	1.980	1.988
E1	37.900	38.100	1.492	1.500
E2	30.700	31.300	1.209	1.232
e	2.000		0.079	
e1	46.000		1.811	
N	20		20	
L	2.100	2.900	0.083	0.114
R	0.400	0.600	0.016	0.024
aaa	0.400		0.016	
bbb	0.250		0.010	
ccc	0.500		0.020	
ddd	0.150		0.006	
$\alpha_1$	89.000	91.000	89.000	91.000
$\alpha_2$	44.000	46.000	44.000	46.000