



SFAF801G THRU SFAF808G

Isolation 8.0 AMPS. Glass Passivated Super Fast Rectifiers



Voltage Range
50 to 600 Volts
Current
8.0 Amperes

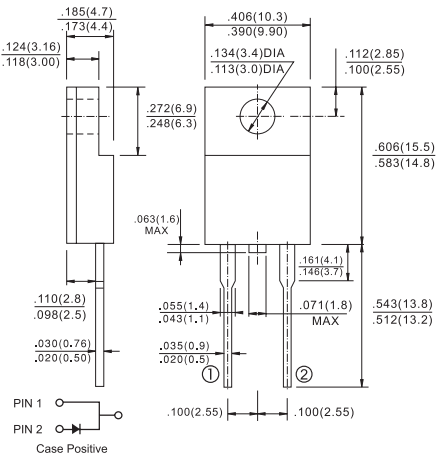
Features

- ✦ Low forward voltage drop
- ✦ High current capability
- ✦ High reliability
- ✦ High surge current capability

Mechanical Data

- ✦ Cases: ITO-220AC molded plastic
- ✦ Epoxy: UL 94V-O rate flame retardant
- ✦ Terminals: Leads solderable per MIL-STD-202, Method 208 guaranteed
- ✦ Polarity: As marked
- ✦ High temperature soldering guaranteed: 260°C/10 seconds 0.25", (6.35mm) from case.
- ✦ Weight: 2.24 grams
- ✦ Mounting torque: 5 in – 1bs. max.

ITO-220AC



Maximum Ratings and Electrical Characteristics

Rating at 25°C ambient temperature unless otherwise specified.

Single phase, half wave, 60 Hz, resistive or inductive load.

For capacitive load, derate current by 20%

Type Number	Symbol	SFAF	SFAF	SFAF	SFAF	SFAF	SFAF	SFAF	SFAF	Units
		801G	802G	803G	804G	805G	806G	807G	808G	
Maximum Recurrent Peak Reverse Voltage	V_{RRM}	50	100	150	200	300	400	500	600	V
Maximum RMS Voltage	V_{RMS}	35	70	105	140	210	280	350	420	V
Maximum DC Blocking Voltage	V_{DC}	50	100	150	200	300	400	500	600	V
Maximum Average Forward Rectified Current @ $T_C = 100^\circ C$	$I_{(AV)}$	8.0								A
Peak Forward Surge Current, 8.3 ms Single Half Sine-wave Superimposed on Rated Load (JEDEC method)	I_{FSM}	125								A
Maximum Instantaneous Forward Voltage @ 8.0A	V_F	0.975			1.3		1.7			V
Maximum DC Reverse Current @ $T_A=25^\circ C$ at Rated DC Blocking Voltage @ $T_A=100^\circ C$	I_R	10 400								μA μA
Maximum Reverse Recovery Time (Note 1)	T_{rr}	35								nS
Typical Junction Capacitance (Note 2)	C_j	90				60				pF
Typical Thermal Resistance (Note 3)	$R_{\theta JC}$	4.0								$^{\circ}C/W$
Operating Temperature Range	T_J	-65 to +150								$^{\circ}C$
Storage Temperature Range	T_{STG}	-65 to +150								$^{\circ}C$

Notes: 1. Reverse Recovery Test Conditions: $I_F=0.5A$, $I_R=1.0A$, $I_{RR}=0.25A$

2. Measured at 1 MHz and Applied Reverse Voltage of 4.0 V D.C.

3. Mounted on Heatsink Size of 2 in x 3 in x 0.25 in Al-Plate.

RATINGS AND CHARACTERISTIC CURVES (SFAF801G THRU SFAF808G)

FIG.1- REVERSE RECOVERY TIME CHARACTERISTIC AND TEST CIRCUIT DIAGRAM

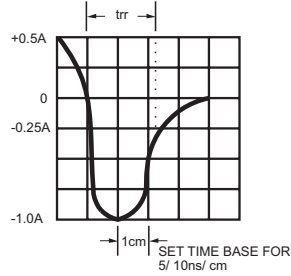
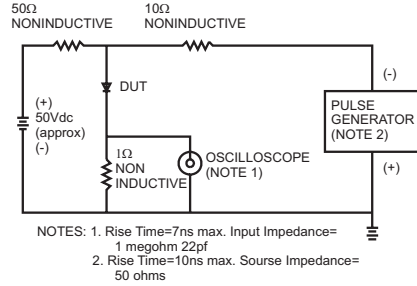


FIG.2- MAXIMUM FORWARD CURRENT DERATING CURVE

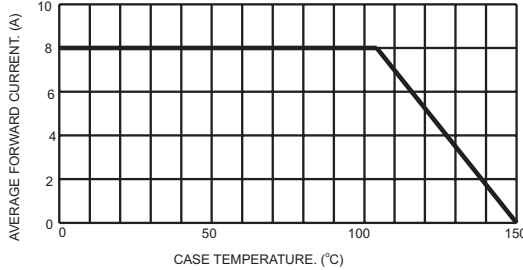


FIG.3- TYPICAL REVERSE CHARACTERISTICS

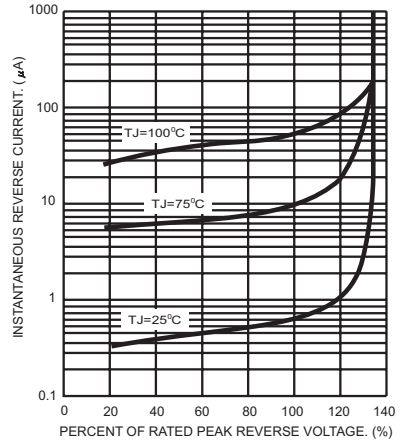


FIG.4- MAXIMUM NON-REPETITIVE FORWARD SURGE CURRENT

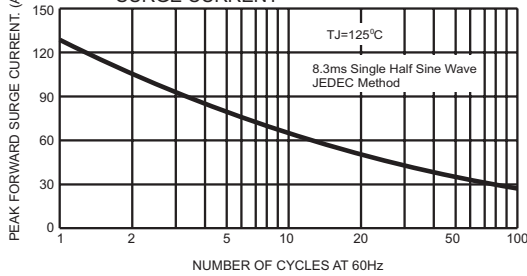


FIG.6- TYPICAL FORWARD CHARACTERISTICS

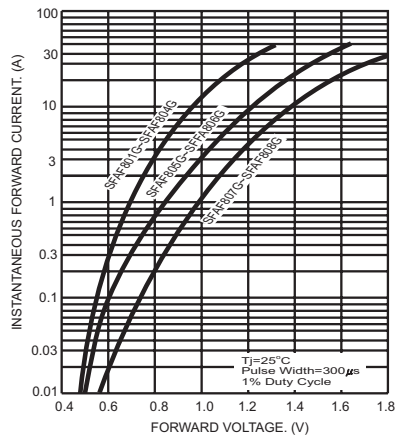


FIG.5- TYPICAL JUNCTION CAPACITANCE

