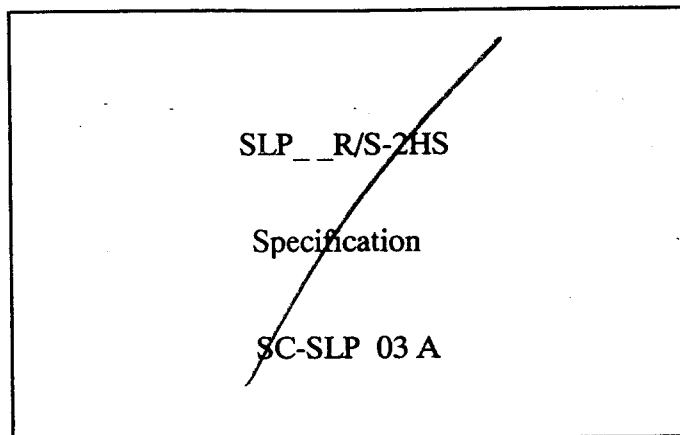


Ref. No. 000765

2000/10

SPEC ON WEB SITE
UNDER SEPARATE COVER



Drawing No.

JSA29529-6 ← LEAD

JSA29154-3

JSA29153-3

JSA28248-3

JSA29249-3

FCI Japan K. K.

Electronics Division Engineering Section

Certified by

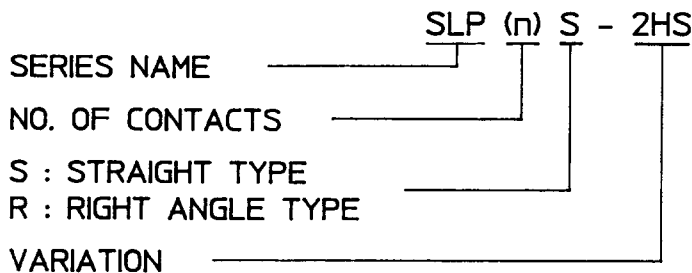
H. Takakura

Manager, Engineering Section

CAT. NO. & DIMENSIONS

NO. OF CONTACTS	NOTE 3	STRAIGHT TYPE CAT. NO.	NOTE 3	RIGHT ANGLE TYPE CAT. NO.	DIMENSIONS(NOTE2)	
					A ±0.3	B ±0.1
4		SLP 4S - 2HS		SLP 4R - 2HS	11.15	6.45
5	*	SLP 5S - 2HS	*	SLP 5R - 2HS	12.40	7.70
6		SLP 6S - 2HS	*	SLP 6R - 2HS	13.65	8.95
7		SLP 7S - 2HS		SLP 7R - 2HS	14.90	10.20
8		SLP 8S - 2HS		SLP 8R - 2HS	16.15	11.45
9		SLP 9S - 2HS		SLP 9R - 2HS	17.40	12.70
10		SLP 10S - 2HS		SLP 10R - 2HS	18.65	13.95
11		SLP 11S - 2HS		SLP 11R - 2HS	19.90	15.20
12		SLP 12S - 2HS		SLP 12R - 2HS	21.15	16.45
13		SLP 13S - 2HS	*	SLP 13R - 2HS	22.40	17.70
14		SLP 14S - 2HS		SLP 14R - 2HS	23.65	18.95
15	*	SLP 15S - 2HS		SLP 15R - 2HS	24.90	20.20
16		SLP 16S - 2HS		SLP 16R - 2HS	26.15	21.45
17		SLP 17S - 2HS	*	SLP 17R - 2HS	27.40	22.70
18		SLP 18S - 2HS		SLP 18R - 2HS	28.65	23.95
19	*	SLP 19S - 2HS		SLP 19R - 2HS	29.90	25.20
20		SLP 20S - 2HS		SLP 20R - 2HS	31.15	26.45

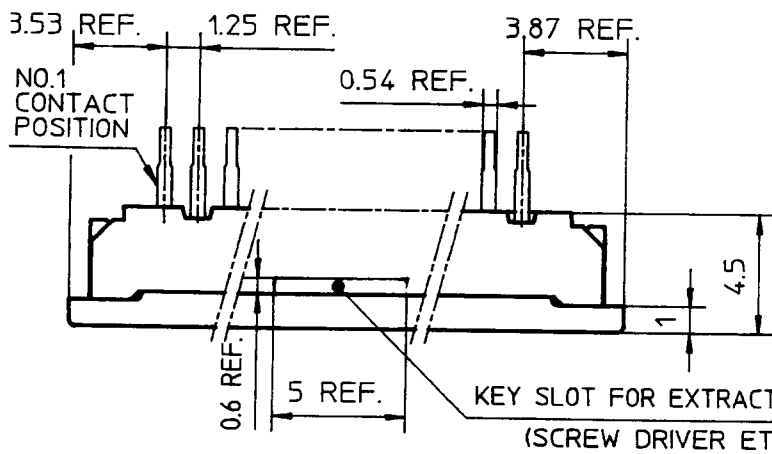
CAT. NO.



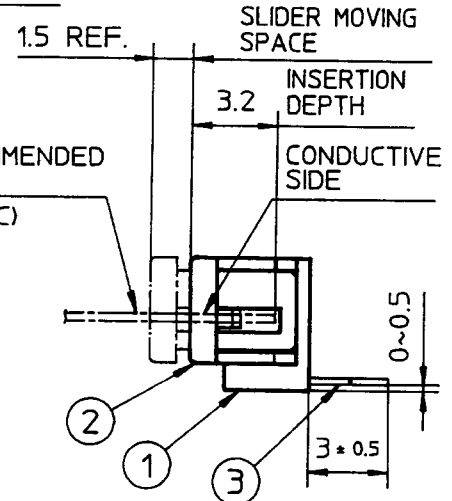
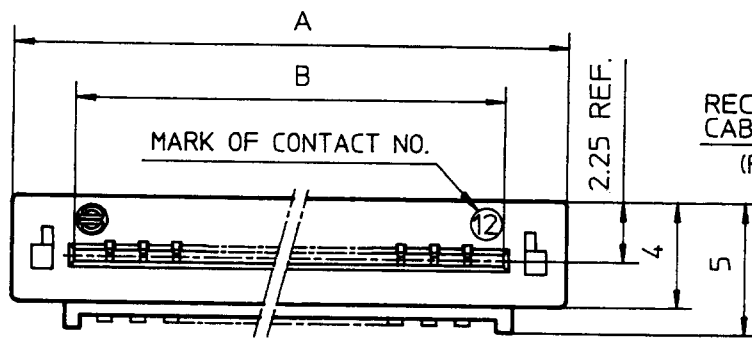
NOTES

- 1) THIS IS SMT CONNECTOR FOR HAND SOLDER
- 2) SEE PART DRAWINGS FOR DIMENSIONS A & B
- 3) PLEASE CONSULT US IN CASE OF USING PARTS WITH *MARK

6	93	10R POS. ADDED.	SJ	SCALE	χ	CAT. NO. TABLE FOR LOW PROFILE ZIFLOK	
5	93	16S POS. ADDED. AU	SJ	DIM. IN	mm	CAT. NO.	
4	92	REDRAWN&14S,18S,AU 7R,16R POS. ADDED.	SJ	DESIGNED		SLP R/S - 2HS	
REV.	DATE	DESCRIPTION	CKD.	DRAWN	A. Ushikubo	DRAWING NO.	REV.
MATERIAL				CHECKED		JSA 29529	6
				APPROVED	S. Ito		
				DATE	APRIL 21, 1992		



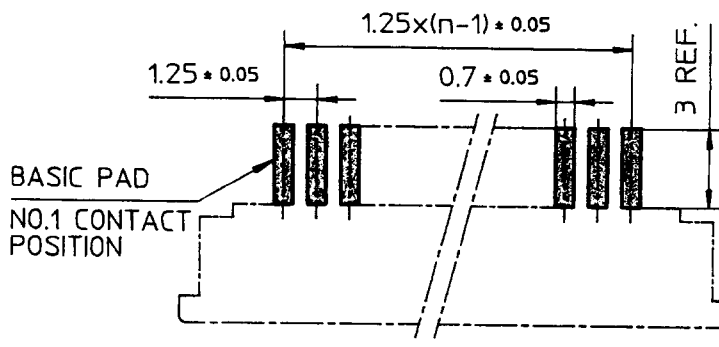
TOLERANCES
UNLESS OTHERWISE SPECIFIED: ±0.2



PT. NO.	PARTS NAME	MATERIAL	Q'TY	NOTE
1	HOUSING	PET RESIN GLASS REINFORCED (UL94V-0)	1	COLOR:BLACK
2	SLIDER		1	COLOR:GRAY
3	CONTACT	PHOSPHOR BRONZE	n	PLATING:TIN ALLOY

n: NO. OF CONTACTS

RECOMMENDED PC BOARD LAYOUT
COMPONENT SIDE

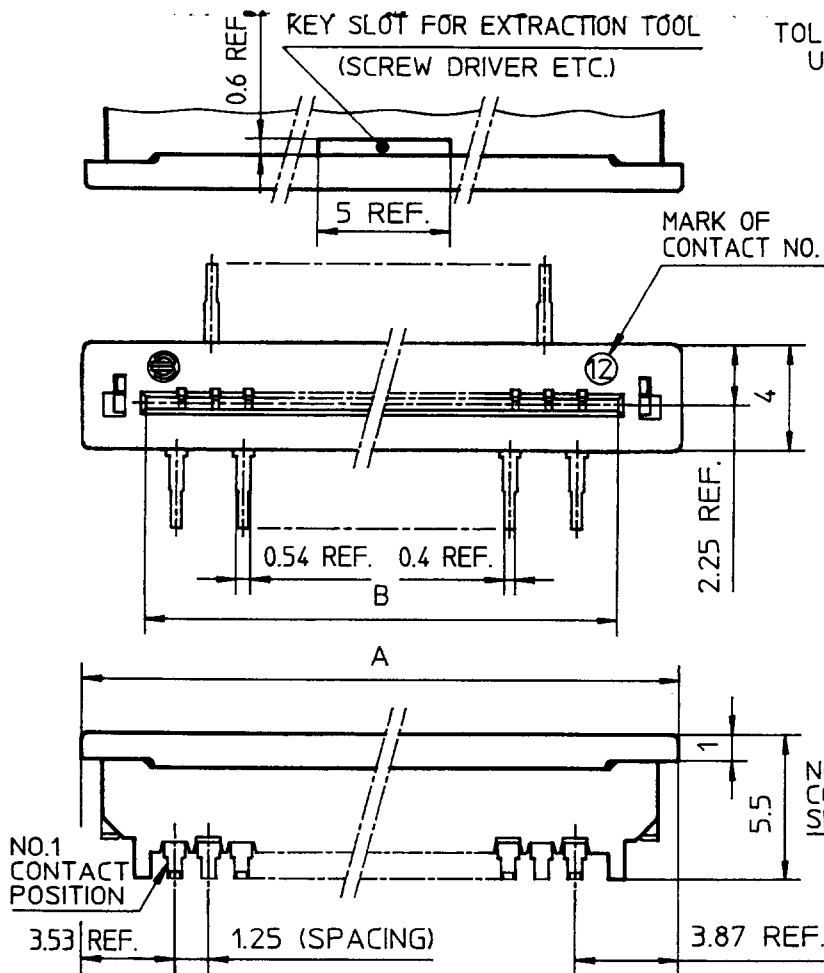


NOTE

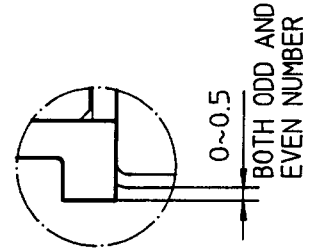
1. THIS IS SMT CONNECTOR
FOR HAND SOLDER.

				SCALE	×	1.25mm SPACING CONNECTOR FOR FPC
				DIM. IN	mm	CAT. NO.
3	JUN. 2,'98	REDRAWN M.I	H.T.	DESIGNED		SLP__R-2HS
REV. DATE	DESCRIPTION	CKD.	DRAWN	M.Tanaka	DRAWING NO.	REV.
			CHECKED	K.Asai	JSA 29154	3
			APPROVED	A.NAKAI		
			DATE	MAY 14, 1987		

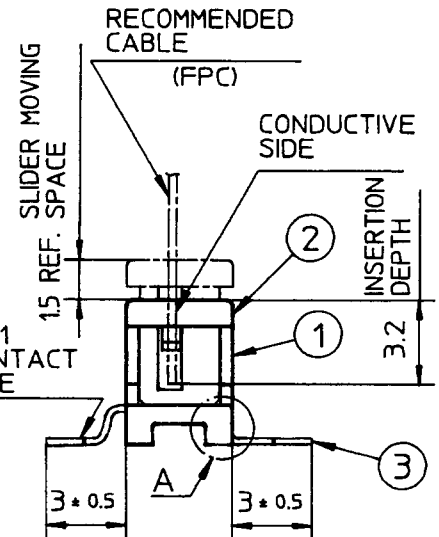




TOLERANCES
UNLESS OTHERWISE SPECIFIED: ± 0.2



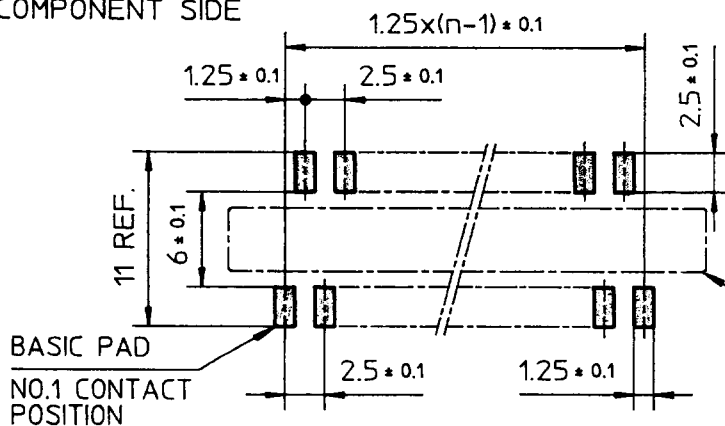
DETAIL A



PT. NO.	PARTS NAME	MATERIAL	Q'TY	NOTE
1	HOUSING	PET RESIN GLASS REINFORCED (UL94V-0)	1	COLOR: BLACK
2	SLIDER		1	COLOR: GRAY
3	CONTACT	PHOSPHOR BRONZE	n	PLATING: TIN ALLOY

RECOMMENDED PC BOARD LAYOUT
COMPONENT SIDE

n: NO. OF CONTACTS



NOTE

- THIS IS SMT CONNECTOR FOR HAND SOLDER.

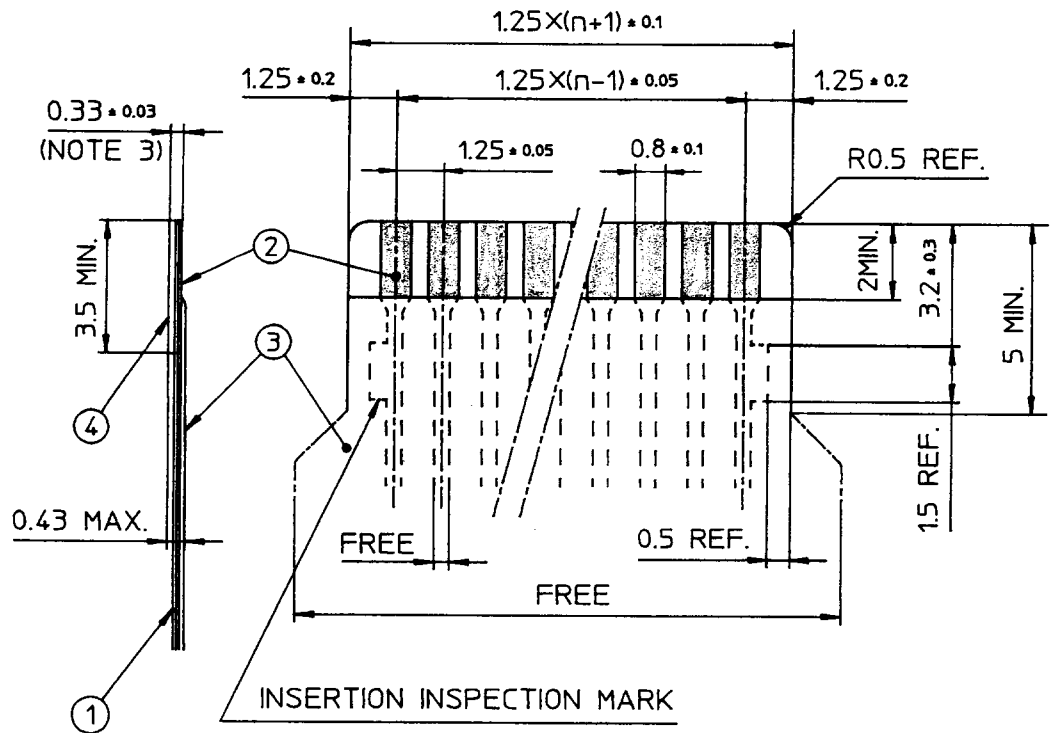
CONNECTOR OUTLINE

				SCALE	\times	1.25mm SPACING CONNECTOR FOR FPC	
				DIM. IN	mm	CAT. NO.	
3	JUN. 2, '98	REDRAWN M.I	H.T	DESIGNED		SLP__S-2HS	
REV. DATE	DESCRIPTION	CKD.	DRAWN	M.Tanaka		DRAWING NO.	REV.
			CHECKED	K.Asai		JSA 29153	3
			APPROVED	A.NAKAI			
			DATE	MAY 14, 1987			



RECOMMENDED CABLE (FPC)

n : NO. OF CONDUCTOR



PT. NO.	PARTS NAME	MATERIAL	THICKNESS (μm)
1	BASE FILM	POLYIMIDE OR EQUAL	25
2	CONDUCTOR	COPPER FOIL (PLATING : SOLDER 1μm MIN. 12μm MAX.)	35
3	OVERLAY	POLYIMIDE OR EQUAL	—
4	SUPPORTING TAPE	POLYESTER OR POLYIMIDE OR EQUAL	188

NOTES.

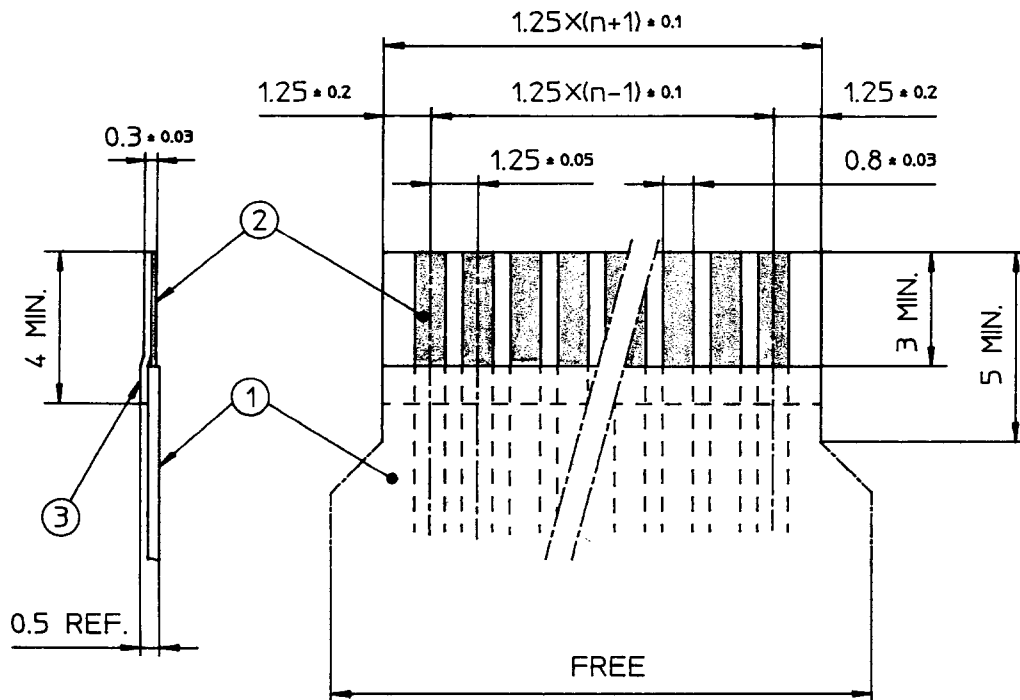
1. NO BURR AT EACH PORTION.
2. NO PEELING IN COMMON USE.
3. TOTAL THICKNESS LIMIT OF EACH MATERIAL (INCLUDING ADHESIVE AGENT) IS SPECIFIED.

REV.	DATE	DESCRIPTION	CKD.	DRAWN	CHECKED	APPROVED	DATE	SCALE	RECOMMENDED CABLE
3	'99 11-29	PLATING THICKNESS CHANGED. M.I.M.Y H.T.						×	CAT. NO.
2	'95 1-13	REDRAWN M.O S.I						mm	SLP__R/S-2
				M.Oba	M.Harada	S.Ito	Jan. 13, 1995		DRAWING NO.
									REV.
									JSA 28248
									3



RECOMMENDED CABLE (FFC)

n : NO. OF CONDUCTOR



PT. NO.	PARTS NAME	MATERIAL	NOTE
1	INSULATOR	FLAME RESISTING POLYESTER OR EQUAL	_____
2	CONDUCTOR	COPPER FOIL : 50 μm	PLATING : SOLDER 1 μm MIN.
3	SUPPORTING TAPE	FLAME RESISTING POLYESTER OR EQUAL	_____

NOTES.

1. NO BURR AT EACH PORTION.
2. NO PEELING IN COMMON USE.

				SCALE	∞	RECOMMENDED CABLE	
3	'99 11-29	PLATING THICKNESS CHANGED. M.I M.Y	4.7	DIM. IN	mm	CAT. NO.	
2	'95 1-17	REDRAWN M.O	S.I	DESIGNED		SLP__R/S-2	
REV.	DATE	DESCRIPTION	CKD.	DRAWN	M.Oba	DRAWING NO.	REV.
MATERIAL				CHECKED	M.Harada	JSA 28249	3
				APPROVED	S.Ito		
				DATE	Jan. 17, 1995		