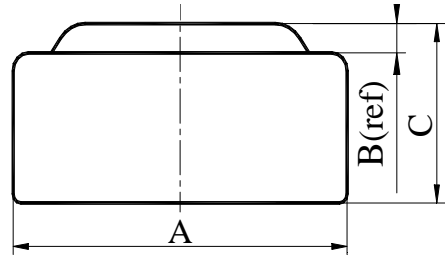
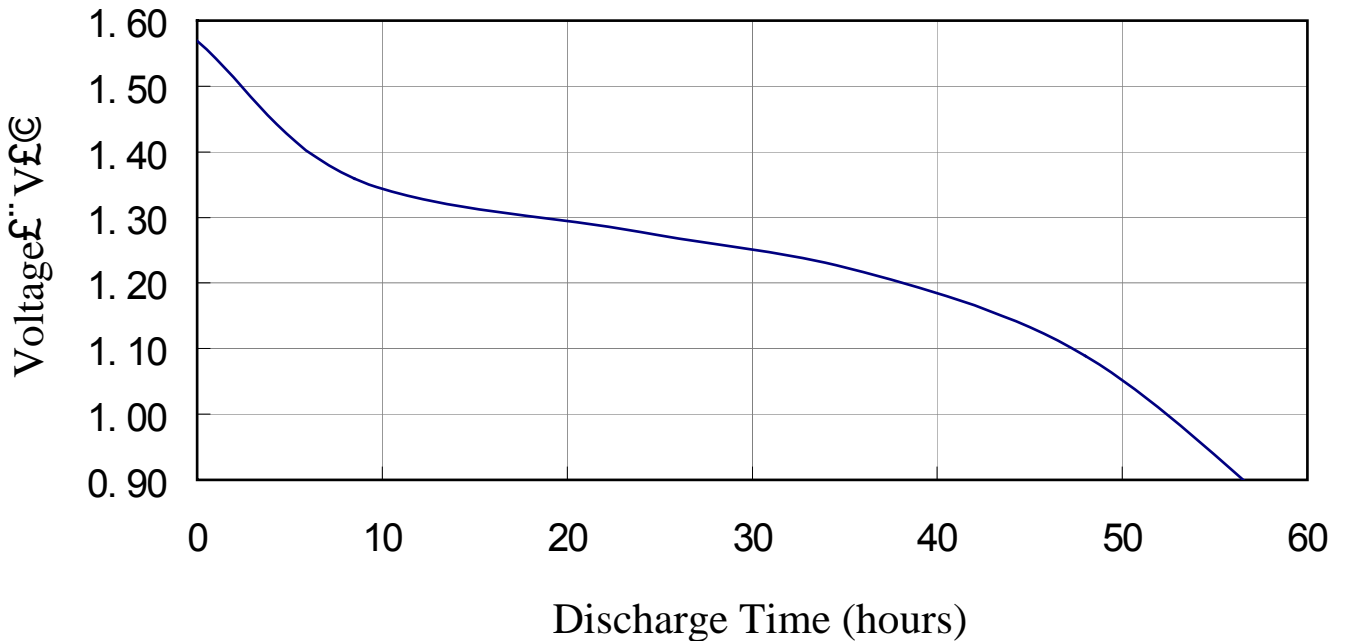


**Chemical System** : Alkaline manganese button batteries  
**Model No.** : LR1130 (LR54 AG10 189)  
**Nominal Dimensions:**  $\Phi 11.60 \times 3.10 \text{mm}$   
**Nominal Voltage** : 1.50V  
**Average Weight** : 1.11g  
**Applications** : Watch, Calculator, Electronic toy, etc.  
**Shelf Life** : Not less than 90% of the service capacity, following 1st year storage at 20°C.  
**Loading** : 1000Ω(20°C)  
**Cut Off Voltage** : 0.90V  
**Capacity** : 72mAh



Dimensions	Unit: mm
A	11.40----11.60
B	0.40(ref)
C	2.90----3.10

**Typical Discharge Characteristics at 20**



## Battery Testers DPB-860

### Technical Parameter



### Battery Types supported

Nominal Voltage Battery Types Loaded Resistance Operating Current

1.5V UM1.D

UM2.C

UM3.AA

UM4.AAA

UM5.

Small Button Cells 10  $\Omega$  150 mA

9V 6F22 215  $\Omega$  40 mA

### Indication

(good) - (weak) - (replace)

Testing conditions 0 ~ 40 ,25 % ~ 80 % RH

Dimensions 55×53×23mm Weight 32 g