

SPECIFICATIONS

Power Connector

Mechanical

Contact Retention Force: 0.91 Kgf min.
Durability: 500 Cycles

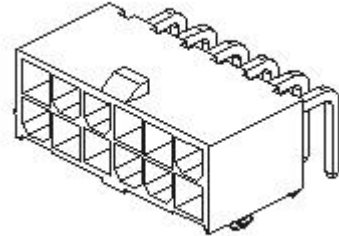
HM23 Series
R/H, T/H Type
4.2mm [.165"] Pitch

Electrical

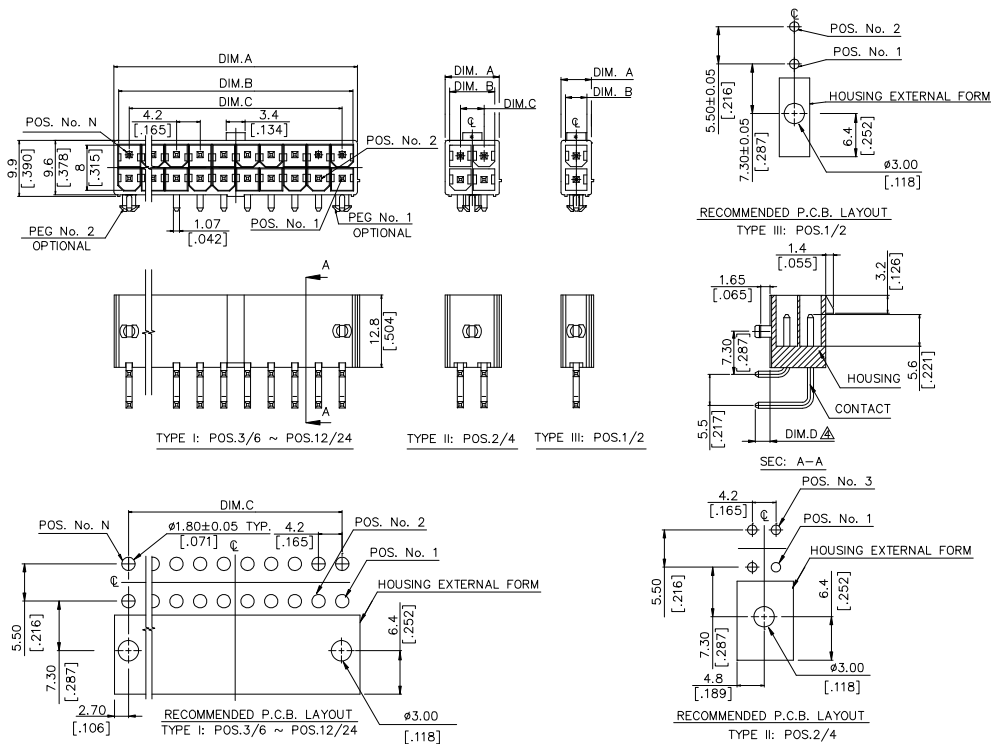
Voltage Rating: 250V
Current Rating: 5.0A per contact
Dielectric Withstanding Voltage: 1500V AC
Insulation Resistance: 1000MΩ min.

Physical

Housing: Thermoplastic, UL 94V-0 Rated in Black Color
Contact: Copper alloy
Plating: See "ORDERING INFORMATION"
Operating Temperature: -45°C to +105°C

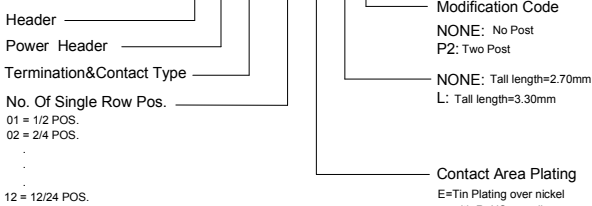


DRAWING



ORDERING INFORMATION

PRODUCT No. : H M 2 3 ** * - * **



HM2312*~***	12/24	51.6[2.031]	50.00[1.969]	46.20[1.819]
HM2311*~***	11/22	47.4[1.866]	45.80[1.803]	42.00[1.654]
HM2310*~***	10/20	43.2[1.701]	41.60[1.638]	37.80[1.488]
HM2309*~***	9/18	39.0[1.535]	37.40[1.472]	33.60[1.323]
HM2308*~***	8/16	34.8[1.370]	33.20[1.307]	29.40[1.157]
HM2307*~***	7/14	30.6[1.205]	29.00[1.142]	25.20[.992]
HM2306*~***	6/12	26.4[1.039]	24.80[.976]	21.00[.827]
HM2305*~***	5/10	22.2[.874]	20.60[.811]	16.80[.661]
HM2304*~***	4/8	18.0[.709]	16.40[.709]	12.60[.496]
HM2303*~***	3/6	13.8[.543]	12.20[.480]	8.40[.331]
HM2302*~***	2/4	9.6[.378]	8.00[.315]	4.20[.165]
HM2301*~***	1/2	5.4[.213]	3.80[.150]	0[.000]
PART No.	No. OF POS.	DIM. A	DIM. B	DIM. C