

## SPECIFICATION

- Part No. : **PCB.SMAFSTJ.B.HT**
- Product Name : SMA (F) Surface Mount PCB Jack
- Feature : SMA(F) Jack  
Surface Mount PCB Jack  
Frequency Range: 0~12.4GHz  
Finish: Gold  
Leg Length: 1mm  
Total Length: 10.40mm  
**RoHS Compliant**



# 1. Introduction

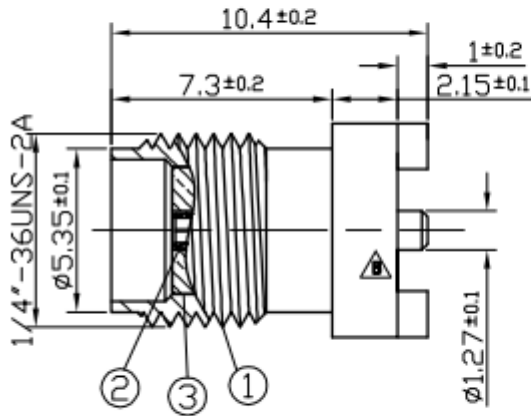
The PCB.SMAFSTJ.B.HT connector was designed to be surface mounted on a PCB, it has a Solder Post for connection. The connector pin is directly soldered onto pads on the PCB. The connector is a standard SMA (F) Jack. The SMA connector is the most popular type connector for RF applications. Taoglas connectors are all RoHS compliant.

# 2. Specification

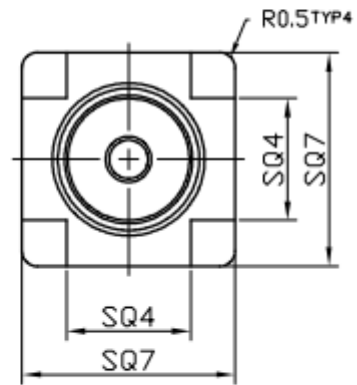
ELECTRICAL	
Impedance	50Ω
Frequency Range	0~12.4 GHz
Working Voltage	Max. 335 Vrms
Dielectric withstanding Voltage	≤1000 Vrms
Insulation Resistance	≥5000M Ω
MECHANICAL	
Connector Dimension	10.4 X Ø5.35 mm
Connector Pin Diameter	1.27 mm
Max. Thickness PCB acceptable	0.8 mm
Connector Type	SMA (F)
ENVIRONMENTAL	
RoHS compliant	

### 3. Connector Drawing

**Side View**



**Front View**



	<b>Name</b>	<b>Material</b>	<b>Finish</b>	<b>QTY</b>
<b>1</b>	<b>Body</b>	<b>Brass</b>	<b>Gold</b>	<b>1</b>
<b>2</b>	<b>Female Contact</b>	<b>Phosphor Bronze</b>	<b>Gold</b>	<b>1</b>
<b>3</b>	<b>Insulator</b>	<b>Teflon</b>	<b>White</b>	<b>1</b>