

Amphenol® RF

Global RF Solutions

FEATURES & BENEFITS

Smaller Package Size

Higher Frequency Range

- SMP: typically used to 20 GHz
- SMPM: typically used to 40 GHz

Compensate for Radial and Axial Misalignment

APPLICATIONS

Aerospace

Board-to-Board Interconnect

Broadband

Instrumentation

Mil/Aero

Optical Nodes and Routers

Phased Array Antennas

Telecommunications



SMP Connectors

SMP Connectors DC to 40GHz

Amphenol RF offers a solution for high frequency, high data rate applications in the SMP and SMPM (Mini-SMP) line of RF connectors. SMP connectors provide microwave performance through 40 GHz and offer a push-on, high performing microwave interconnect system.

The available detent systems, full and limited, provide respective levels of engagement/disengagement forces. This family of interconnects addresses all package design needs. Outside of microwave performance it can be utilized as a highly shielded interconnect for high data rate applications or in a board-to-board system using a floating bullet. This floating bullet provides a link between mated pairs compensating for both radial and axial misalignment. Available in a cable-to-board mated pair, the plug side can be provided in either right angle or straight with termination capability to either 0.047" or 0.086", semi-rigid or conformable coax. The receptacles are designed for surface-mount termination (SMT) or through hole, end launch for board edge or vertical mount.

Specification

Conditions

Electrical

Impedance	50 Ω	
Frequency Range	DC – 40 GHz	
VSWR	< 1.50	0 - 20 GHz

Mechanical

Engagement Force	Limited Detent 10lbs. (44.5 N) max
Disengagement Force	Limited Detent 5lbs. (22.25 N) min
Mating Cycles	100 with full detent; > 500 with limited detent
Radial Float	.020 in total
Axial Float	.010 in total

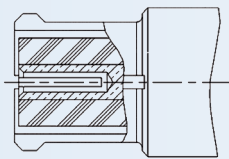
Environmental

Temperature Range	-65°C to +155°C
-------------------	-----------------

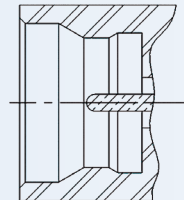
Part Number

Description

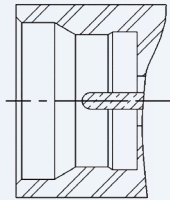
SMP-FSBA-645	Bullet (female-to-female), 6.45mm
SMP-FSBA-990	Bullet (female-to-female), 9.90mm
SMP-FSBA-145	Bullet (female-to-female), 14.5mm
SMP-FSBA-224	Bullet (female-to-female), 22.4mm
SMP-FS-C06	Straight Cable (female), to .047 S/R
SMP-FS-C07	Straight Cable (female), to .086 S/R
SMP-FR-C06	R/A Cable (female), to .047 S/R
SMP-FR-C07	R/A Cable (female), to .086 S/R
SMP-MSCM-PCT	Straight PCB (male), Thru-Hole Catcher's Mitt
SMP-MSFD-PCT*	Straight PCB (male), Thru-Hole Full Detent
SMP-MSLD-PCT*	Straight PCB (male), Thru-Hole Limited Detent
SMP-MSSB-PCT*	Straight PCB (male), Thru-Hole Smooth Bore
SMP-MSCM-PCS*	Straight PCB (male), Surface Mount Catcher's Mitt
SMP-MSFD-PCS*	Straight PCB (male), Surface Mount Full Detent
SMP-MSLD-PCS*	Straight PCB (male), Surface Mount Limited Detent
SMP-MSSB-PCS-1*	Straight PCB (male), Surface Mount Smooth Bore
SMP-MSCM-PCR*	Straight PCB (male), Rear Mount Catcher's Mitt
SMP-MSFD-PCR*	Straight PCB (male), Rear Mount Full Detent
SMP-MSLD-PCR*	Straight PCB (male), Rear Mount Limited Detent
SMP-MSSB-PCR*	Straight PCB (male), Rear Mount Smooth Bore
SMP-MSCM-PCE*	Straight PCB (male), Edge Mount Catcher's Mitt
SMP-MSFD-PCE*	Straight PCB (male), Edge Mount Full Detent
SMP-MSLD-PCE*	Straight PCB (male), Edge Mount Limited Detent
SMP-MSSB-PCE*	Straight PCB (male), Edge Mount Smooth Bore



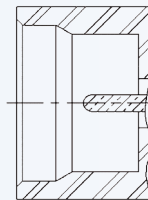
Female



Male Limited Detent



Male Full Detent



Smooth Bore

*Contact Factory for Availability

Amphenol RF • 4 Old Newtown Road • Danbury, CT 06810
 Telephone: 800.627.7100 • Fax: 203.796.2032 • www.amphenolrf.com
 Amphenol RF Asia • Block DM2, Tong Wei Industrial District • Industry General Co.
 Gong Ming Town • Bao An District Shenzhen 518132, P.R. China

Rev. C

Amphenol®RF
 Global RF Solutions