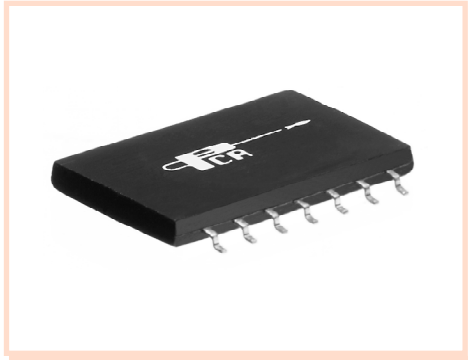


10 Base-T Interface Module for PC Card Applications

EPE6052GM



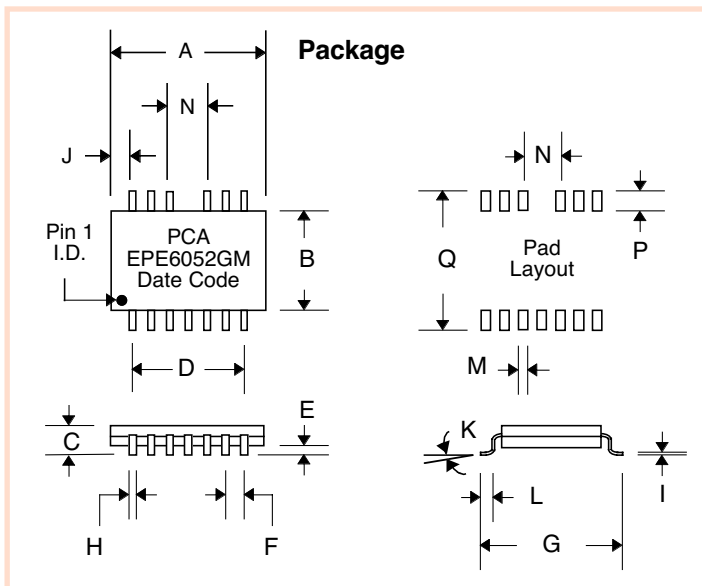
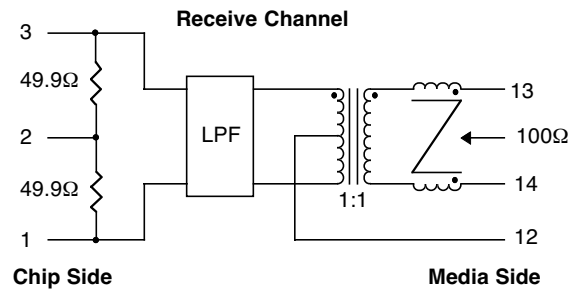
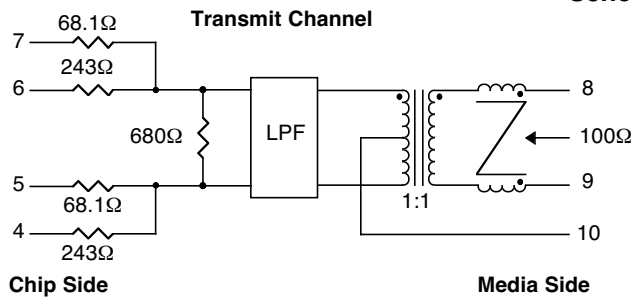
- Optimized for NCR 92C02A chip set •
- Robust construction allows for IR/VP processes •
- Complies with or exceeds IEEE 802.3, 10 Base-T Requirements •

Electrical Parameters @ 25° C

Cut-off Frequency (MHz)	Insertion Loss (dB Max.)		Return Loss (dB Min.)		Attenuation (dB Min.)								Common Mode Rejection (dB Min.)				Crosstalk (dB Min.)
	@ 1.5 MHz	1-10 MHz	5-10 MHz		@ 20 MHz		@ 25 MHz		@ 30 MHz		@ 40 MHz		@ 30 MHz		@ 100 MHz		@ 1-10 MHz
	Xmit	Rcv	Xmit	Rcv	Xmit	Rcv	Xmit	Rcv	Xmit	Rcv	Xmit	Rcv	Xmit	Rcv	Xmit	Rcv	Xmit to Rcv
17	-1	-1	-15	-15	-7	-7	-18	-18	-30	-30	-35	-35	-30	-30	-30	-30	-30

- **Isolation** : meets or exceeds 802.3 IEEE Requirements • **Characteristic Filter Impedance** : 100 Ω •
- Attenuation is referenced to the filter output @ 5 MHz • Insertion Loss is for filter only, excluding resistor network •

Schematic



Dimensions

Dim.	(Inches)			(Millimeters)		
	Min.	Max.	Nom.	Min.	Max.	Nom.
A	.780	.800	.790	19.81	20.32	20.07
B	.510	.530	.520	12.96	13.46	13.21
C	.088	.092	.090	2.24	2.33	2.30
D	.595	.605	.600	15.11	15.37	15.24
E	.003	.010	.005	.076	.254	.127
F	.097	.103	.100	2.46	2.62	2.54
G	.660	.680	.670	16.76	17.27	17.02
H	.017	.022	.020	.432	.559	.508
I	.008	.013	.011	.203	.330	.279
J	.090	.100	.095	2.29	2.54	2.41
K	0°	8°	4°	0°	8°	4°
L	.025	.045	.040	.635	1.14	1.02
M	---	---	.030	---	---	.762
N	---	---	.200	---	---	5.08
P	---	---	.085	---	---	2.16
Q	---	---	.700	---	---	17.78