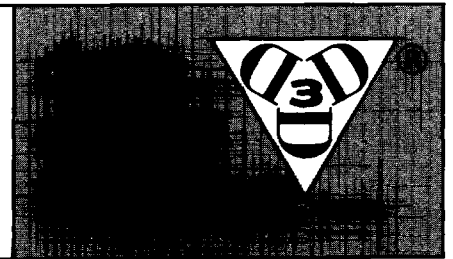


All Silicon Delay Line

SERIES: **3D7005**

5 Taps



DESCRIPTION

The 3D7000* series delay line is a completely silicon delay line, which features unique circuits to compensate for temperature and power supply variations. It offers 5 & 10 equally spaced taps providing delays from 5 ns to 500 ns. This series comes in a standard 14 pin DIP package, which is compatible with other standard Hybrid delay lines. It is also offered in a 16 pin SOIC package for surface mount technology to reduce P.C. board area.

The 3D7000* series is designed to produce both leading and trailing edge delay time with equal precision. Each tap capable of driving up to ten 74LS type loads.

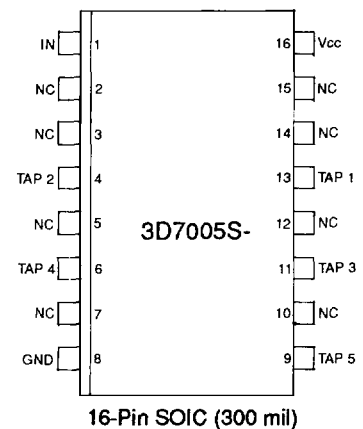
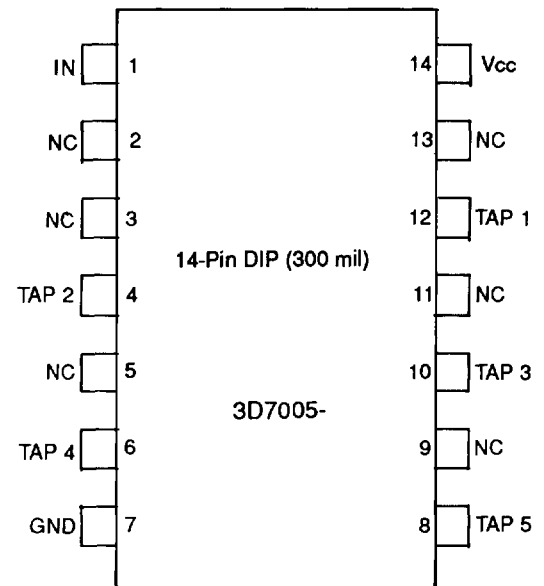
FEATURES

- High operating frequency (100 MHz).
- Very low ground-bounce noise.
- Voltage & temperature compensated.
- Auto-insertable.
- TTL/CMOS compatible, Low power CMOS.
- Vapor phase, IR and wave solderable.

SPECIFICATIONS

- Standard 14 pin DIP & 16 pin SOIC.
- Leading & trailing edge accuracy.
- Delay tolerance: $\pm 5\%$ or ± 2 ns, whichever is greater (others on request).
- Custom delays available: Any increment from 5 to 50 ns not listed.
- Minimum input pulse width: 20% of total delay.
- Delay time vs. Vcc: 1.5 ns or 2% for 5 Vdc $\pm 5\%$.
- Temperature coefficient of delay: ± 1 ns or $\pm 3\%$, whichever is greater (0 to 70°C). (Others on request.)

PIN DESCRIPTION



TABLE

Part Number		Total Delay (ns)	Delay/Tap (ns)	Max Operating Freq (MHz)	Part Number		Total Delay (ns)	Delay/Tap (ns)	Max Operating Freq (MHz)
DIP	SOIC				DIP	SOIC			
**3D7005-25	**3D7005S-25	20	5	67	3D7005-100	3D7005S-100	100	20	16
3D7005-30	3D7005S-30	30	6	55	3D7005-125	3D7005S-125	125	25	15
3D7005-35	3D7005S-35	35	7	43	3D7005-150	3D7005S-150	150	30	11
3D7005-40	3D7005S-40	40	8	41	3D7005-200	3D7005S-200	200	40	8
3D7005-45	3D7005S-45	45	9	37	3D7005-225	3D7005S-225	225	45	7
3D7005-50	3D7005S-50	50	10	33	3D7005-250	3D7005S-250	250	50	6
3D7005-60	3D7005S-60	60	12	26	3D7005-300	3D7005S-300	300	60	8
3D7005-75	3D7005S-75	75	15	22	3D7005-400	3D7005S-400	400	80	7
3D7005-80	3D7005S-80	80	16	19	3D7005-500	3D7005S-500	500	100	6

*Patented **Taps delay referenced to 1st tap.
Input to 1st tap = $7.5 \pm .5$ ns.

©Data Delay Devices

8DDDIS008

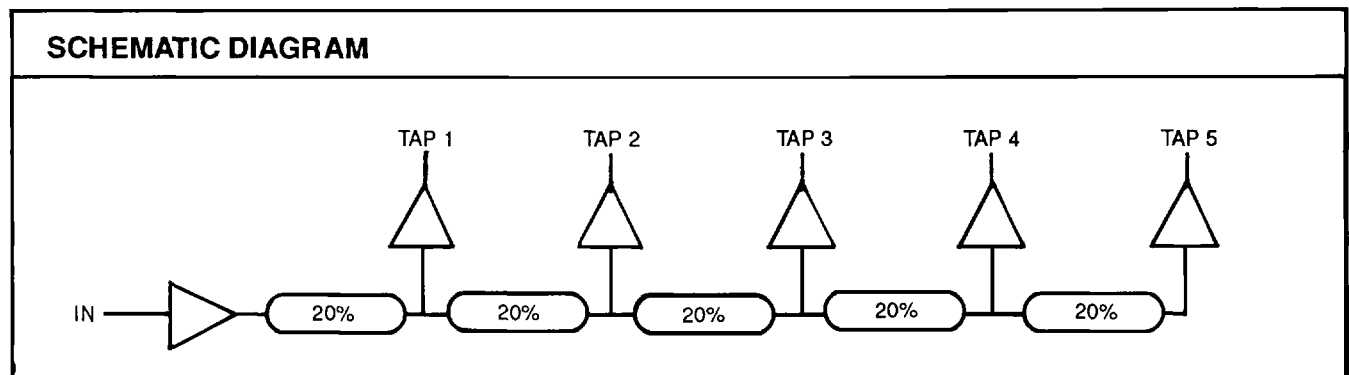
SERIES: 3D7005 (5 Taps)

ABSOLUTE MAXIMUM RATINGS					
SYMBOL	PARAMETER	MIN	MAX	UNITS	NOTES
Vdd	DC Supply Voltage	-0.3	7.0	V	
Vin	Input Pin Voltage	-0.3	Vdd + 0.3	V	
Iin	Input Pin Current	-1.0	1.0	mA	25C
Tstrg	Storage Temperature	-55	150	C	
Tlead	Lead Temperature		300	C	10 sec

OPERATING CONDITIONS					
SYMBOL	PARAMETER	MIN	MAX	UNITS	NOTES
Vdd	DC Supply Voltage	4.75	5.25	V	
*Idd	Static Supply		15	mA	
Vss	Circuit Ground	0.0	0.0	V	
Ta	Ambient Temperature	0.0	70.0	C	
Vih	High Level Input Voltage	2.0		V	
Vil	Low Level Input Voltage		0.8	V	
Ioh	High Level Output Current		-4.0	mA	Vcc=Min Voh=2.4
Iol	Low Level Output Current		4.0	mA	Vcc=Min Vol=0.4
I _{IH}	High Level Input Current		10	μA	V _I = V _{DD}
I _{IL}	Low Level Input Current		-250	μA	V _I = 0
T _R & T _F	Output Rise & Fall Time		2	ns	

*I_{DD} (Dynamic) = C_{LD} (n) VF
 Where: C_{LD} = Average capacitance load/tap; n = # taps; V = V_{DD} max.; F = Frequency

Input Capacitance = 10.0 pf typical.
 Output Load Capacitance = 25 pf Max.



SERIES: 3D7005 (5 Taps)

TEST CONDITIONS

INPUT:

Ambient Temperature: $25^{\circ}\text{C} \pm 3^{\circ}\text{C}$
Supply Voltage (V_{CC}): $5.0\text{V} \pm 0.1\text{V}$
Input Pulse: High = $3.0\text{V} \pm 0.1\text{V}$
 Low = $0.0\text{V} \pm 0.1\text{V}$
Source Impedance: 50 ohm Max.
Rise and Fall Time: 3.0 ns Max. (measured between 0.6V and 2.4V)
Pulse Width: $1.5 \times$ total delay
Period: $10 \times$ total delay

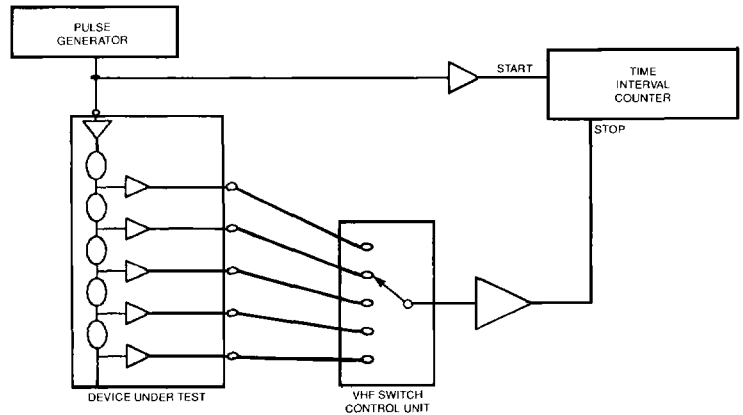
OUTPUT:

Each output is loaded with the equivalent of one 74F04 Input gate. Delay is measured at the 1.5V level on the rising and falling edge.

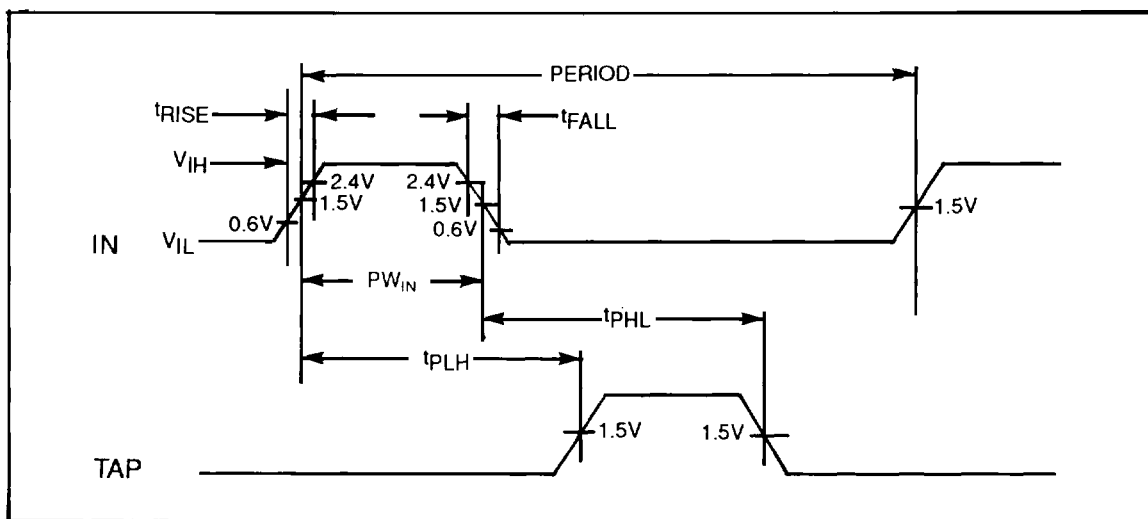
NOTE:

Above conditions are for test only and do not restrict the operation of the device under other data sheet conditions.

TEST CIRCUIT



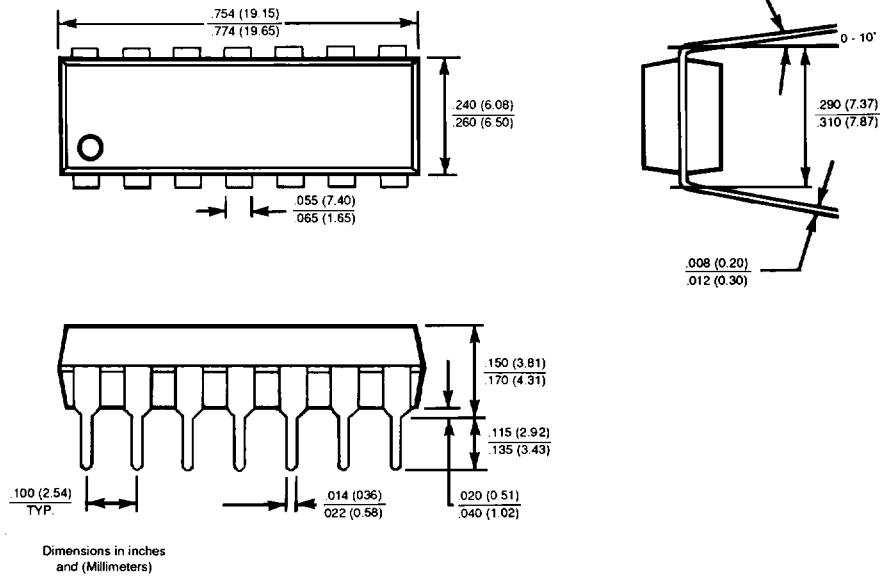
TIMING DIAGRAM



SERIES: 3D7005 (5 Taps)

PACKAGES

14-PIN DIP (300 MIL)



16-PIN SOIC (300 MIL)

