

SPECIFICATIONS

power cable assembly

Constituent

2 Pins Plug+Cable+Receptacle

AC Power Series

2 pins plug to receptacle

Mechanical

S.R MUST BE ABLE TO BEAR 30lb/1 MIN BEFORE HAVING DISPLACEMENT.

Electrical

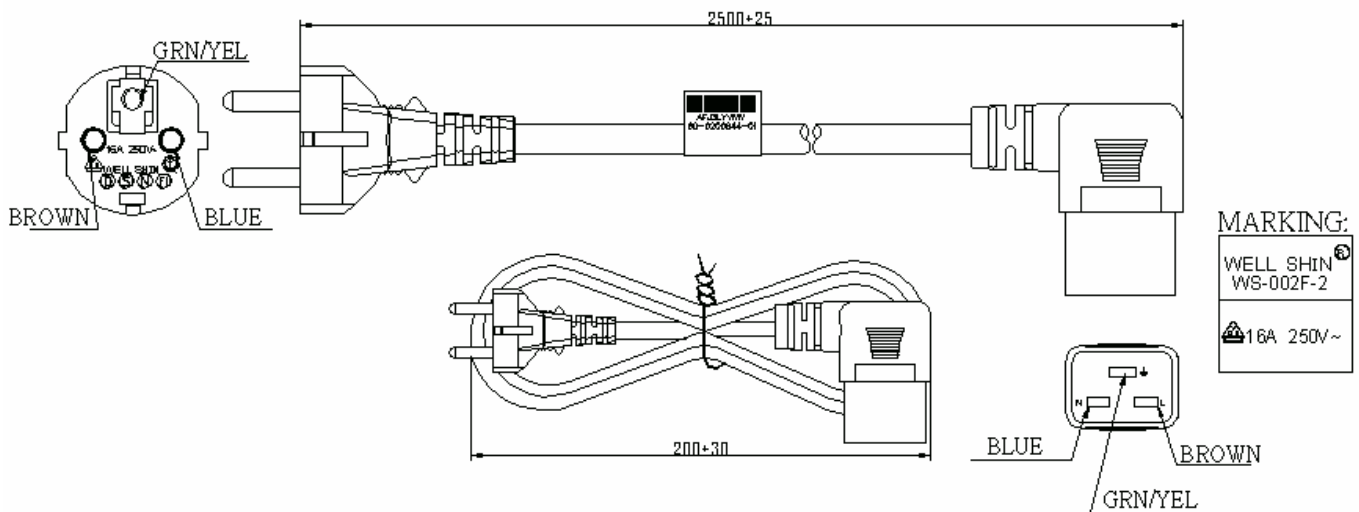
- 1. PLUG ELECTRICITY RATING:16A 250VAC**
- 2. CONNETOR ELECTRICITY RATING:16A 250VAC**

Agency Approvals

- 1. CABLE: VDE,FIMKO,DEMKO,NEMKO,SEMKO AND SEV APPROVED.**
- 2. PLUG: VDE APPROVED.**
- 3. CONNETOR: VDE APPROVED.**



DRAWING



ORDERING INFORMATION

