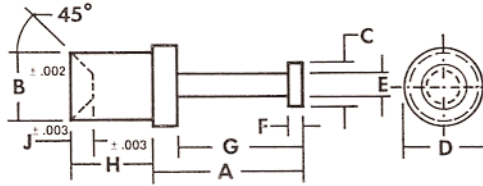




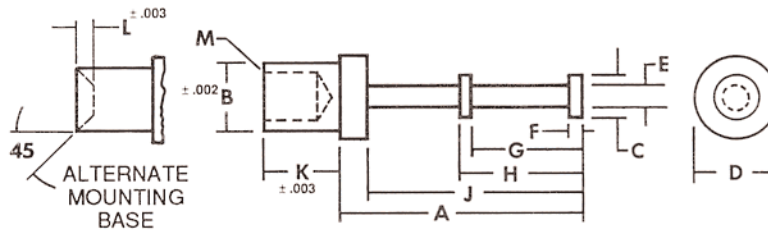
EMC® Product "NIT" Series



Type 123M

Type	EMC Part #	MIL-T-55155 Number	A	B	C	D	E	F	G	H	J	Mtg. Hole	Board Thick.
123M	5488-P02	SE11XC01	.104 (2.64)	.072 (1.83)	.050 (1.27)	.093 (2.36)	.038 (.97)	.020 (.51)	.082 (2.08)	.082 (2.08)	.017 (.43)	.076 (1.93)	.062 (1.57)
123M	5489-P02	SE11XC02	.104 (2.64)	.072 (1.83)	.050 (1.27)	.093 (2.36)	.038 (.97)	.020 (.51)	.082 (2.08)	.113 (2.87)	.017 (.43)	.076 (1.93)	.093 (2.36)
123M	5490-P02	SE11XC03	.104 (2.64)	.072 (1.83)	.050 (1.27)	.093 (2.36)	.038 (.97)	.020 (.51)	.082 (2.08)	.145 (3.68)	.017 (.43)	.076 (1.93)	.125 (3.18)

inch
(mm)



Type 124M

Type	EMC Part #	MIL-T-55155 Number	A	B	C	D	E	F	G	H	J	K	L	Mtg. Hole	Board Thick.	M
124M	5491-P02	SE12XC01	.186 (4.72)	.072 (1.83)	.050 (1.27)	.093 (2.36)	.038 (.97)	.020 (.51)	.082 (2.08)	.102 (2.59)	.164 (4.17)	.082 (2.08)	.017 (.43)	.076 (1.93)	.062 (1.57)	Alternate Mounting Base
124M	5492-P02	SE12XC02	.186 (4.72)	.072 (1.83)	.050 (1.27)	.093 (2.36)	.038 (.97)	.020 (.51)	.082 (2.08)	.102 (2.59)	.164 (4.17)	.113 (2.87)	.017 (.43)	.076 (1.93)	.093 (2.36)	
124M	5493-P02	SE12XC03	.186 (4.72)	.072 (1.83)	.050 (1.27)	.093 (2.36)	.038 (.97)	.020 (.51)	.082 (2.08)	.102 (2.59)	.164 (4.17)	.145 (3.68)	.017 (.43)	.076 (1.93)	.125 (3.18)	
124M	5494-P02	SE12XC04	.237 (6.02)	.090 (2.29)	.093 (2.36)	.125 (3.18)	.047 (1.19)	.020 (.51)	.082 (2.08)	.102 (2.59)	.195 (4.95)	.105 (2.67)	--	.094 (2.39)	.062 (1.57)	.064(1.57)Dia. x .062(1.57) Deep, Max Runout .003(.08)Tir
124M	5495-P02	SE12XC05	.237 (6.02)	.090 (2.29)	.093 (2.36)	.125 (3.18)	.047 (1.19)	.020 (.51)	.082 (2.08)	.102 (2.59)	.195 (4.95)	.135 (3.43)	--	.094 (2.39)	.093 (2.36)	
124M	5496-P02	SE12XC06	.237 (6.02)	.090 (2.29)	.093 (2.36)	.125 (3.18)	.047 (1.19)	.020 (.51)	.082 (2.08)	.102 (2.59)	.195 (4.95)	.165 (4.19)	--	.094 (2.39)	.125 (3.18)	
124M	5497-P02	SE12XC07	.360 (9.14)	.112 (2.84)	.145 (3.68)	.187 (4.75)	.065 (1.65)	.031 (.79)	.130 (3.30)	.161 (4.09)	.314 (7.98)	.109 (2.77)	--	.116 (2.95)	.062 (1.57)	.076(1.93)Dia. x .094(2.39) Deep, Max Runout .003(.08) Tir
124M	5498-P02	SE12XC08	.360 (9.14)	.112 (2.84)	.145 (3.68)	.187 (4.75)	.065 (1.65)	.031 (.79)	.130 (3.30)	.161 (4.09)	.314 (7.98)	.141 (3.58)	--	.116 (2.95)	.093 (2.36)	
124M	5499-P02	SE12XC09	.360 (9.14)	.112 (2.84)	.145 (3.68)	.187 (4.75)	.065 (1.65)	.031 (.79)	.130 (3.30)	.161 (4.09)	.314 (7.98)	.172 (4.37)	--	.116 (2.95)	.125 (3.18)	

inch
(mm)

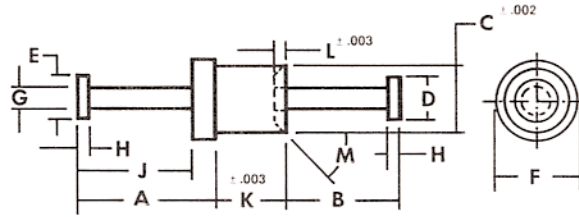
Plating:

P02: 400µ" Tin over copper

P08: 30µ" Gold over silver



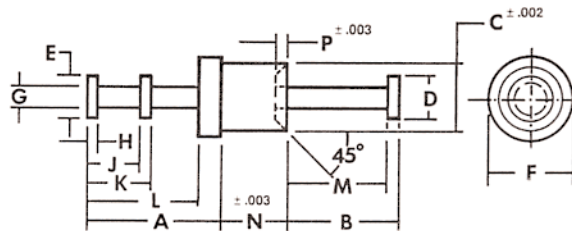
EMC® Product "NIT" Series



Type 125M

Type	EMC Part #	MIL-T-55155 Number	A	B	C	D	E	F	G	H	J	K	L	M	Mtg. Hole	Board Thick.
125M	5500-P02	SE13XC01	.104 (2.64)	.082 (2.08)	.072 (1.83)	.050 (1.27)	.050 (1.27)	.093 (2.36)	.038 (.97)	.020 (.51)	.082 (2.08)	.082 (2.08)	.017 (.43)	45°	.076 (1.93)	.062 (1.57)
125M	5501-P02	SE13XC02	.104 (2.64)	.082 (2.08)	.072 (1.83)	.050 (1.27)	.050 (1.27)	.093 (2.36)	.038 (.97)	.020 (.51)	.082 (2.08)	.113 (2.87)	.017 (.43)	45°	.076 (1.93)	.093 (2.36)
125M	5502-P02	SE13XC03	.104 (2.64)	.082 (2.08)	.072 (1.83)	.050 (1.27)	.050 (1.27)	.093 (2.36)	.038 (.97)	.020 (.51)	.082 (2.08)	.145 (3.68)	.017 (.43)	45°	.076 (1.93)	.125 (3.18)
125M	5503-P02	SE13XC04	.156 (3.96)	.125 (3.18)	.116 (2.95)	.070 (1.78)	.070 (1.78)	.156 (3.96)	.040 (1.02)	.032 (.81)	.124 (3.15)	.105 (2.67)	.031 (.79)	30°	.120 (3.05)	.062 (1.57)
125M	5504-P02	SE13XC05	.156 (3.96)	.125 (3.18)	.116 (2.95)	.070 (1.78)	.070 (1.78)	.156 (3.96)	.040 (1.02)	.032 (.81)	.124 (3.15)	.135 (3.43)	.031 (.79)	30°	.120 (3.05)	.093 (2.36)
125M	5505-P02	SE13XC06	.156 (3.96)	.125 (3.18)	.116 (2.95)	.070 (1.78)	.070 (1.78)	.156 (3.96)	.040 (1.02)	.032 (.81)	.124 (3.15)	.165 (4.19)	.031 (.79)	30°	.120 (3.05)	.125 (3.18)

inch (mm)



Type 126M

Type	EMC Part #	MIL-T-55155 Number	A	B	C	D	E	F	G	H	J	K	L	M	N	P	Mtg. Hole	Board Thick.
126M	5506-P02	SE14XC01	.186 (4.72)	.082 (2.08)	.072 (1.83)	.050 (1.27)	.050 (1.27)	.093 (2.36)	.038 (.97)	.020 (.51)	.082 (2.08)	.102 (2.59)	.164 (4.17)	.062 (1.57)	.082 (2.08)	.017 (.43)	.076 (1.93)	.062 (1.57)
126M	5507-P02	SE14XC02	.186 (4.72)	.082 (2.08)	.072 (1.83)	.050 (1.27)	.050 (1.27)	.093 (2.36)	.038 (.97)	.020 (.51)	.082 (2.08)	.102 (2.59)	.164 (4.17)	.062 (1.57)	.113 (2.87)	.017 (.43)	.076 (1.93)	.093 (2.36)
126M	5508-P02	SE14XC03	.186 (4.72)	.082 (2.08)	.072 (1.83)	.050 (1.27)	.050 (1.27)	.093 (2.36)	.038 (.97)	.020 (.51)	.082 (2.08)	.102 (2.59)	.164 (4.17)	.062 (1.57)	.145 (3.68)	.017 (.43)	.076 (1.93)	.125 (3.18)
126M	5509-P02	SE14XC04	.360 (9.14)	.109 (2.77)	.114 (2.90)	.082 (2.08)	.145 (3.68)	.187 (4.75)	.065 (1.65)	.033 (.84)	.125 (3.18)	.158 (4.01)	.315 (8.00)	.076 (1.93)	.105 (2.67)	.031 (.79)	.120 (3.05)	.062 (1.57)
126M	5510-P02	SE14XC05	.360 (9.14)	.109 (2.77)	.114 (2.90)	.082 (2.08)	.145 (3.68)	.187 (4.75)	.065 (1.65)	.033 (.84)	.125 (3.18)	.158 (4.01)	.315 (8.00)	.076 (1.93)	.135 (3.43)	.031 (.79)	.120 (3.05)	.093 (2.36)
126M	5511-P02	SE14XC06	.360 (9.14)	.109 (2.77)	.114 (2.90)	.082 (2.08)	.145 (3.68)	.187 (4.75)	.065 (1.65)	.033 (.84)	.125 (3.18)	.158 (4.01)	.315 (8.00)	.076 (1.93)	.165 (4.19)	.031 (.79)	.120 (3.05)	.125 (3.18)

inch (mm)

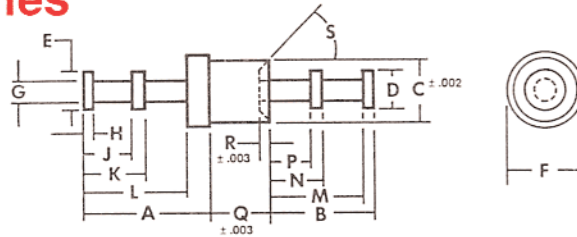
Plating:

P02: 400µ" Tin over copper

P08: 30µ" Gold over silver

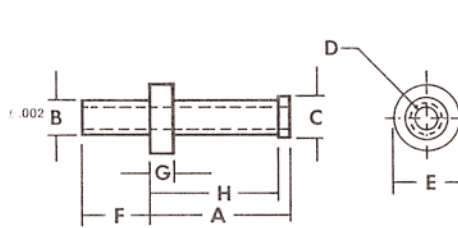


EMC® Product "NIT" Series

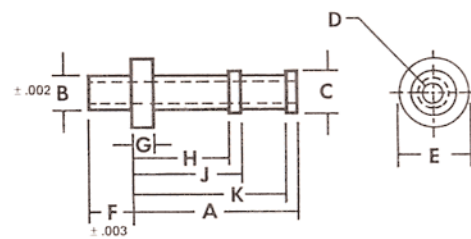


Type 127M

Type	EMC Part#	MIL-T-55155 Number	A	B	C	D	E	F	G	H	J	K	L	M	N	P	Q	R	S	Mtg. Hole	Board Thick.
127M	5512-P02	SE15XC01	.186 (4.72)	.164 (4.17)	.072 (1.83)	.050 (1.27)	.050 (1.27)	.093 (2.36)	.038 (.97)	.020 (.51)	.082 (2.08)	.102 (2.59)	.164 (4.17)	.144 (3.66)	.082 (2.08)	.062 (1.57)	.082 (2.08)	.017 (.43)	45°	.076 (1.93)	.062 (1.57)
127M	5513-P02	SE15XC02	.186 (4.72)	.164 (4.17)	.072 (1.83)	.050 (1.27)	.050 (1.27)	.093 (2.36)	.038 (.97)	.020 (.51)	.082 (2.08)	.102 (2.59)	.164 (4.17)	.144 (3.66)	.082 (2.08)	.062 (1.57)	.113 (2.87)	.017 (.43)	45°	.076 (1.93)	.093 (2.36)
127M	5514-P02	SE15XC03	.186 (4.72)	.164 (4.17)	.072 (1.83)	.050 (1.27)	.050 (1.27)	.093 (2.36)	.038 (.97)	.020 (.51)	.082 (2.08)	.102 (2.59)	.164 (4.17)	.144 (3.66)	.082 (2.08)	.062 (1.57)	.145 (3.68)	.017 (.43)	45°	.076 (1.93)	.125 (3.18)
127M	5515-P02	SE15XC04	.237 (6.02)	.134 (3.40)	.125 (3.18)	.062 (1.57)	.093 (2.36)	.156 (3.96)	.047 (1.19)	.020 (.51)	.078 (1.98)	.098 (2.49)	.191 (4.85)	.114 (2.90)	.082 (2.08)	.062 (1.57)	.105 (2.67)	.062 (1.57)	27°	.129 (3.28)	.062 (1.57)
127M	5516-P02	SE15XC05	.237 (6.02)	.134 (3.40)	.125 (3.18)	.062 (1.57)	.093 (2.36)	.156 (3.96)	.047 (1.19)	.020 (.51)	.078 (1.98)	.098 (2.49)	.191 (4.85)	.114 (2.90)	.082 (2.08)	.062 (1.57)	.135 (3.43)	.062 (1.57)	27°	.129 (3.28)	.093 (2.36)
127M	5517-P02	SE15XC06	.237 (6.02)	.134 (3.40)	.125 (3.18)	.062 (1.57)	.093 (2.36)	.156 (3.96)	.047 (1.19)	.020 (.51)	.078 (1.98)	.098 (2.49)	.191 (4.85)	.114 (2.90)	.082 (2.08)	.062 (1.57)	.165 (4.19)	.062 (1.57)	27°	.129 (3.28)	.125 (3.18)
127M	5518-P02	SE15XC07	.343 (8.71)	.312 (7.92)	.202 (5.13)	.145 (3.68)	.145 (3.68)	.250 (6.35)	.065 (1.65)	.031 (.79)	.124 (3.15)	.155 (3.94)	.311 (7.90)	.281 (7.14)	.188 (4.78)	.157 (3.99)	.093 (2.36)	.032 (.81)	45°	.206 (5.23)	.062 (1.57)
127M	5519-P02	SE15XC08	.343 (8.71)	.312 (7.92)	.202 (5.13)	.145 (3.68)	.145 (3.68)	.250 (6.35)	.065 (1.65)	.031 (.79)	.124 (3.15)	.155 (3.94)	.311 (7.90)	.281 (7.14)	.188 (4.78)	.157 (3.99)	.125 (3.18)	.032 (.81)	45°	.206 (5.23)	.093 (2.36)
127M	5520-P02	SE15XC09	.343 (8.71)	.312 (7.92)	.202 (5.13)	.145 (3.68)	.145 (3.68)	.250 (6.35)	.065 (1.65)	.031 (.79)	.124 (3.15)	.155 (3.94)	.311 (7.90)	.281 (7.14)	.188 (4.78)	.157 (3.99)	.156 (3.96)	.032 (.81)	45°	.206 (5.23)	.125 (3.18)



Type 128M



Type 129M

Type	EMC Part #	MIL-T-55155 Number	A	B	C	D	E	F	G	H	Mtg. Hole	Board Thick.
128M	5521-P02	SE16XC01	.156 (3.96)	.062 (1.57)	.093 (2.36)	.043 (1.09)	.125 (3.18)	.084 (2.13)	.040 (1.02)	.131 (3.33)	.067 (1.70)	.062 (1.57)
128M	5522-P02	SE16XC02	.156 (3.96)	.062 (1.57)	.093 (2.36)	.043 (1.09)	.125 (3.18)	.115 (2.92)	.040 (1.02)	.131 (3.33)	.067 (1.70)	.093 (2.36)
128M	5523-P02	SE16XC03	.156 (3.96)	.062 (1.57)	.093 (2.36)	.043 (1.09)	.125 (3.18)	.147 (3.73)	.040 (1.02)	.131 (3.33)	.067 (1.70)	.125 (3.18)

Type	EMC Part#	MIL-T-55155 Number	A	B	C	D	E	F	G	H	J	K	Mtg. Hole	Board Thick.
129M	5524-P02	SE17XC01	.328 (8.33)	.112 (2.84)	.145 (3.68)	.078 (1.98)	.187 (4.75)	.109 (2.77)	.046 (1.17)	.188 (4.78)	.208 (5.28)	.308 (7.82)	.116 (2.95)	.062 (1.57)
129M	5525-P02	SE17XC02	.328 (8.33)	.112 (2.84)	.145 (3.68)	.178 (4.52)	.187 (4.75)	.141 (3.58)	.046 (1.17)	.188 (4.78)	.208 (5.28)	.308 (7.82)	.116 (2.95)	.093 (2.36)
129M	5526-P02	SE17XC03	.328 (8.33)	.112 (2.84)	.145 (3.68)	.078 (1.98)	.187 (4.75)	.172 (4.37)	.046 (1.17)	.188 (4.78)	.208 (5.28)	.308 (7.82)	.116 (2.95)	.125 (3.18)

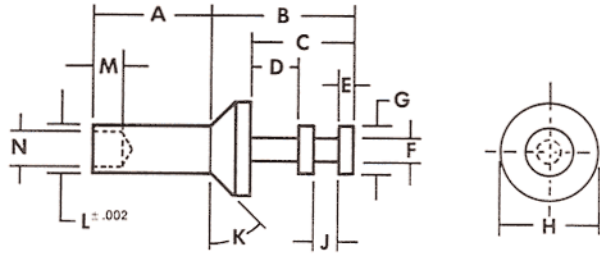
Plating:

P02: 400µ" Tin over copper

P08: 30µ" Gold over silver



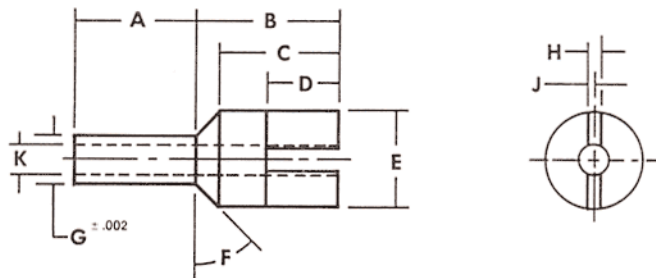
EMC® Product "NIT" Series



Type 130M

Type	EMC Part #	MIL-T-55155 Number	A	B	C	D	E	F	G	H	J	K	L	M	N	Mtg. Hole	Board Thick.
130M	5527-P02	SE23XC01	.062 (1.57)	.188 (4.78)	.136 (3.45)	.064 (1.63)	.020 (.51)	.031 (.79)	.060 (1.52)	.125 (3.18)	.032 (.81)	45°	.060 (1.52)	.040 (1.02)	.042 (1.07)	.067 (1.70)	.031 (.79)
130M	5528-P02	SE23XC02	.094 (2.39)	.188 (4.78)	.136 (3.45)	.064 (1.63)	.020 (.51)	.031 (.79)	.060 (1.52)	.125 (3.18)	.032 (.81)	45°	.060 (1.52)	.040 (1.02)	Max. Runout .003 (.08)	.067 (1.70)	.062 (1.56)
130M	5529-P02	SE23XC03	.125 (3.18)	.188 (4.78)	.136 (3.45)	.064 (1.63)	.020 (.51)	.031 (.79)	.060 (1.52)	.125 (3.18)	.032 (.81)	45°	.060 (1.52)	.040 (1.02)	Tir	.067 (1.70)	.093 (2.36)
130M	5530-P02	SE23XC04	.156 (3.96)	.188 (4.78)	.136 (3.45)	.064 (1.63)	.020 (.51)	.031 (.79)	.060 (1.52)	.125 (3.18)	.032 (.81)	45°	.060 (1.52)	.040 (1.02)	Tir	.067 (1.70)	.125 (3.18)

inch
(mm)



Type 131M

Type	EMC Part #	MIL-T-55155 Number	A	B	C	D	E	F	G	H	J	K	Mtg. Hole	Board Thick.
131M	5531-P02	SE24XC01	.062 (1.57)	.188 (4.78)	.156 (3.96)	.093 (2.36)	.125 (3.18)	45°	.060 (1.52)	.029 (.74)	.015 (.38)	.042 (1.07)	.067 (1.70)	.031 (.79)
131M	5532-P02	SE24XC02	.094 (2.39)	.188 (4.78)	.156 (3.96)	.093 (2.36)	.125 (3.18)	45°	.060 (1.52)	.029 (.74)	.015 (.38)	Max. Runout .003 (.08)	.067 (1.70)	.062 (1.57)
131M	5533-P02	SE24XC03	.125 (3.18)	.188 (4.78)	.156 (3.96)	.093 (2.36)	.125 (3.18)	45°	.060 (1.52)	.029 (.74)	.015 (.38)	Tir	.067 (1.70)	.093 (2.36)
131M	5534-P02	SE24XC04	.156 (3.96)	.188 (4.78)	.156 (3.96)	.093 (2.36)	.125 (3.18)	45°	.060 (1.52)	.029 (.74)	.015 (.38)	Tir	.067 (1.70)	.125 (3.18)

inch
(mm)

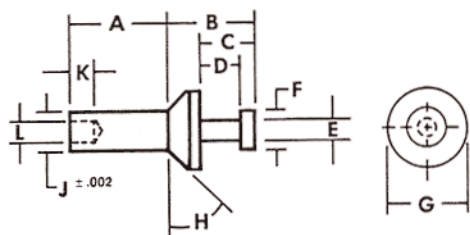
Plating:

P02: 400µ" Tin over copper

P08: 30µ" Gold over silver



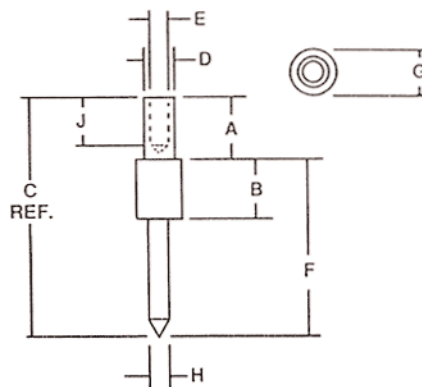
EMC® Product "NIT" Series



Type 132M

Type	EMC Part #	MIL-T-55155 Number	A	B	C	D	E	F	G	H	J	K	L	Mtg. Hole	Board Thick.
132M	5535-P02	SE25XC01	.062 (1.57)	.136 (3.45)	.084 (2.13)	.064 (1.63)	.031 (.79)	.060 (1.52)	.125 (3.18)	45°	.060 (1.52)	.040 (1.02)	.042 (1.07)	.067 (1.70)	.031 (.79)
132M	5536-P02	SE25XC02	.094 (2.39)	.136 (3.45)	.084 (2.13)	.064 (1.63)	.031 (.79)	.060 (1.52)	.125 (3.18)	45°	.060 (1.52)	.040 (1.02)	Max. Runout	.067 (1.70)	.062 (1.57)
132M	5537-P02	SE25XC03	.125 (3.18)	.136 (3.45)	.084 (2.13)	.064 (1.63)	.031 (.79)	.060 (1.52)	.125 (3.18)	45°	.060 (1.52)	.040 (1.02)	.003 (.08)	.067 (1.70)	.093 (2.36)
132M	5538-P02	SE25XC04	.156 (3.96)	.136 (3.45)	.084 (2.13)	.064 (1.63)	.031 (.79)	.060 (1.52)	.125 (3.18)	45°	.060 (1.52)	.040 (1.02)	Tir	.067 (1.70)	.125 (3.18)

inch
(mm)



Type 106

Type	EMC Part #	A	B	C	D	E	F	G	H	J	Board Thick.
106	5373-P02	.125 (3.18)	.120 (3.05)	.479 (12.17)	.060 (1.52)	.040 (1.02)	.354 (8.99)	.093 (2.36)	.030 (2.03)	.093 (2.36)	.033 (.84)
106	6159-P02	.051 (1.30)	.027 (.69)	.226 (5.74)	.040 (1.02)	.025 (.64)	.175 (4.45)	.062 (1.57)	.025 (.64)	.035 (.89)	.029 (.74)
106	6212-P02	.082 (2.08)	.027 (.69)	.195 (4.95)	.040 (1.02)	.025 (.64)	.113 (2.87)	.062 (1.57)	.025 (.64)	.035 (.89)	.029 (.74)
106	6213-P02	.051 (1.30)	.207 (5.26)	.251 (6.38)	.040 (1.02)	.025 (.64)	.200 (5.08)	.062 (1.57)	.025 (.64)	.035 (.89)	.029 (.74)
106	6214-P02	.051 (1.30)	.027 (.69)	.551 (14.00)	.040 (1.02)	.025 (.64)	.500 (12.70)	.062 (1.57)	.025 (.64)	.035 (.89)	.029 (.74)
106	6215-P02	.042 (1.07)	.027 (.69)	.157 (3.99)	.040 (1.02)	.025 (.64)	.115 (2.92)	.062 (1.57)	.025 (.64)	.035 (.89)	.029 (.74)

inch
(mm)

Plating:

P02: 400µ" Tin over copper

P08: 30µ" Gold over silver