

## SPECIFICATIONS

### Mechanical

**Contact Retention Force:** 9.8N(1Kgw) min.  
**Contact Mating Force:** 39.2N (4Kgw) max.  
**Contact Unmating Force With Eject Function:** 24.5N max..  
**Unmating Force Without Eject Button:** PC card: 6.7N to 39.2N  
 Smart card: 2N min.  
**Durability:** PC Card: 10000 Cycles  
 Smart Card: 100000 Cycles

### Electrical

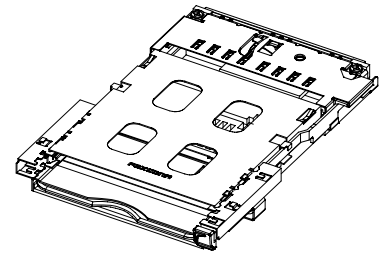
**Current Rating:** 0.5A max.  
**Insulation Resistance:** 1000MΩ min. (Initial)  
**Dielectric Withstanding Voltage:** 250 V AC RMS

### Physical

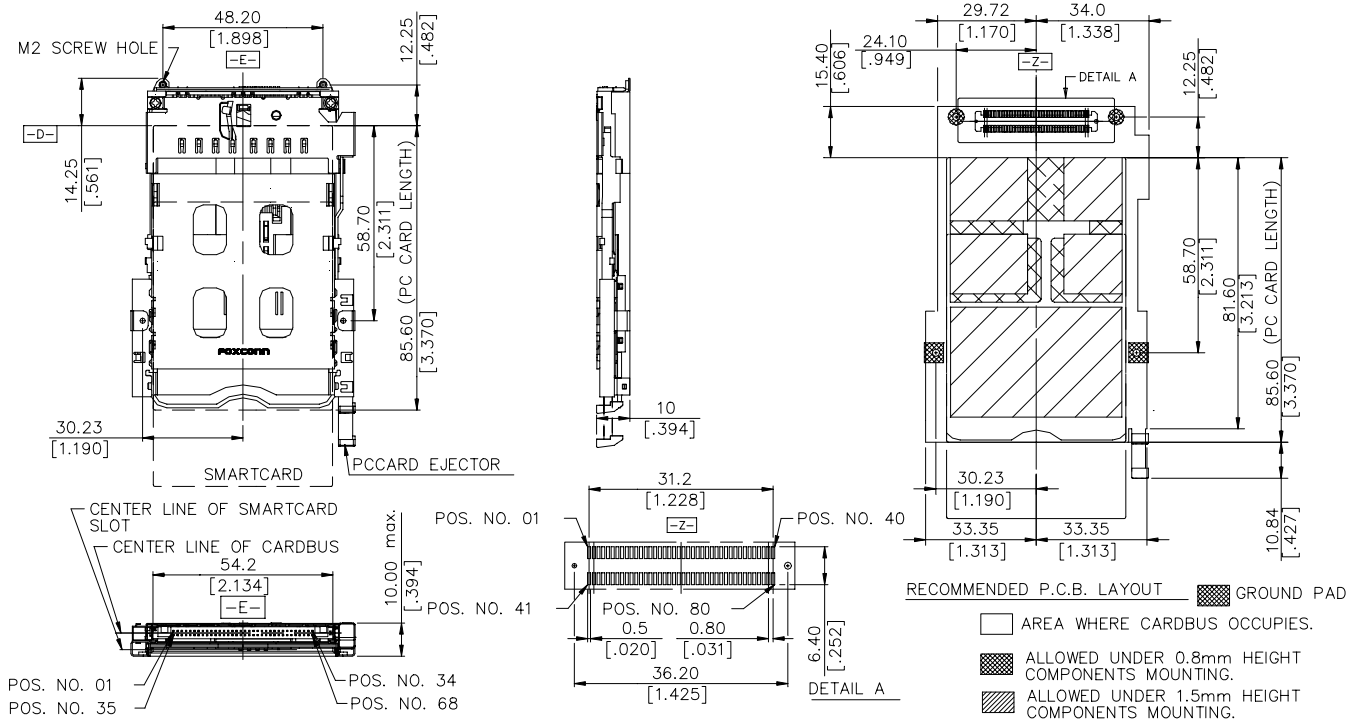
**Housing:** LCP, UL 94V-0 rated in Black Color  
**Contact:** Phosphor Bronze  
**Operating Temperature:** -20 to +85

## CardBus+Smart card

1CA86\* Series, 76 Pos.  
 SMT Type  
 1.27 mm [0.050"] Pitch



## DRAWING



## ORDERING INFORMATION

PRODUCT NO. : 1C A 8 \* 5 \* \*-\*\*\_\*\*

Product Family	1C=Cardbus G2	Extension Code	(By project)
Ass'y product		Push bar type	T1
Voltage&Tail type	8=3.3V, Straight to pcb	Ejector type	1=top right ejector 6=top right ejector & bottom left ejector
Deck type	6=Normal type upper right for cardbus, lower left for smartcard 7=Reverse type upper right for cardbus, lower left for smartcard	Stand off height	0=0mm A=1.5mm Q=1.3mm
Lever type	5=Variable arm		