

# T&B Crimp Terminals

Overview . . . . .	2
Catalog Numbering System . . . . .	2
Ring Terminals	
Vinyl Insulated Ring Terminals . . . . .	3
Non-Insulated Ring Terminals . . . . .	3
Fork Terminals	
Vinyl Insulated Fork Terminals . . . . .	4
Non-Insulated Fork Terminals . . . . .	4
Locking Fork Terminals	
Vinyl Insulated Locking Fork Terminals . . . . .	5
Non-Insulated Locking Fork Terminals . . . . .	5
Butt Splices and Disconnects	
Vinyl Insulated Butt Splices . . . . .	6
Vinyl Insulated Male Disconnects-250 Series . . . . .	6
Vinyl Insulated Female Disconnects-250 Series . . . . .	6
Fully Insulated Vinyl Female Disconnects-250 Series . . . . .	6
Disconnects	
Fully Insulated Nylon Male Disconnects-250 Series . . . . .	7
Fully Insulated Nylon Female Disconnects-250 Series . . . . .	7
Vinyl Insulated Piggyback Disconnects-250 Series . . . . .	7
Bullet Connectors	
Vinyl Insulated Male Bullet Connectors-4mm (.156") . . . . .	8
Fully Insulated Vinyl Female Bullet Connectors-4mm (.156") . . . . .	8
Fully Insulated Nylon Male Bullet Connectors . . . . .	8
Fully Insulated Nylon Female Bullet Connectors . . . . .	8
Blade Terminals, Pin Terminals	
Vinyl Insulated Straight Blade Terminals . . . . .	9
Vinyl Insulated Straight Pin Terminals . . . . .	9
Wire Joints, Quick Splices, Crimping Tools	
Nylon Wire Joints . . . . .	10
Multiple Quick Splices . . . . .	10
9" Ratchet Crimping Tool . . . . .	10
Crimping Tools	
Plier Type Tool . . . . .	11
Toggle Type Hand Tool with Shure Stake® . . . . .	11
Index . . . . .	12



# T&B Crimp Terminals

## Overview



### T&B Crimp Terminals and Splices

T&B Crimp Terminals and Splices are designed specifically for inexpensive insulated and non-insulated electrical terminations. This terminal product group is perfect for most commercial applications. T&B Crimp Terminals and Splices also meet or exceed requirements for a reliable connection in a variety of industrial applications. Whether heavy duty power wiring or smaller control circuits, T&B Crimp Terminals and Splices provide excellent crimp assemblies ranging from 22 to 6 AWG with consistent long-lasting reliability, ease of application, and lower total installed cost. Included are Disconnects, Bullet Connectors, Blade and Pin Terminals, Wire Joints, Quick Splices, and a choice of matching quality crimping tools.

### Features of T&B Crimp Terminals and Splices

- Brazed seam, Electro-tin plated, funnel entry most items.
- Product line covers all standard components — rings, forks, locking forks, butt splices and disconnects.
- Unique offerings are also available — blade terminals, pin terminals, bullets and quick splices.
- Available in Distributor and Bulk size packaging.
- UL Listed Rings, Forks, Locking Forks, Splices, Wire Joints, and Pin Terminals.
- Terminals recommended for use with Hand Tool CT503, WT11M, TBM6S.
- Insulators are color-coded to indicate proper die nest usage.
- Wire sizes are marked on tongue of terminal.
- Recommended temperature 90°C Max.
- Recommended voltage 600V terminals, 300V disconnects.



## Catalog Numbering System

Example: TV14-38R					
Product	Terminal and Insulation	Wire Size Range	Feature Size	Terminal Type	Bulk Option
T	V	14	38	R	- 1
Thomas & Betts Crimp Terminals	(Blank) Bare Non-Insulated (V) Vinyl Funnel Entry (N) Nylon Funnel Entry (VF) Vinyl Fully Insulated (NF) Nylon Fully Insulated	Always the Largest Wire Size in Range (18) 22-18 AWG (14) 16-14 AWG (10) 12-10 AWG (8) 8 AWG (6) 6 AWG	<b>Bolt Hole:</b> Ring and Fork Terminals  <b>Tab Width:</b> (250 Series) Disconnects  <b>Pin Length:</b> Pin Terminals  <b>Blade Length:</b> Blade Terminals  <b>Diameter:</b> Bullets	(R) Ring (F) Fork (LF) Locking Fork (BS) Butt Splice (FD) Female Disconnect (MD) Male Disconnect (PD) Piggy Back Disconnect (BL) Blade (FB) Female Bullet (MB) Male Bullet (PT) Pin Terminal (QS) Quick Splice (WJ) Wire Joint	Add to Cat. Numbers for Bulk Quantities

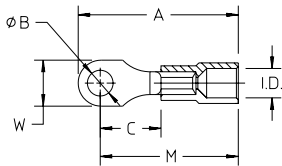
**Thomas & Betts**

# T&B Crimp Terminals

## Ring Terminals



### Vinyl Insulated Ring Terminals



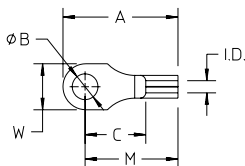
Cat. No.	Wire Range	Ins. Color	B Bolt Size	Dimensions					Dist. Bagged Qty.	Bulk† Ctn. Qty.
				A	W	C	M	I.D.		
TV18-6R	22-18	Red	#4-#6	.870	.250	.325	.745	.160	50	1,000
TV18-8R	22-18	Red	#8	.900	.310	.325	.745	.160	50	1,000
TV18-10R	22-18	Red	#10	.900	.310	.325	.745	.160	50	1,000
TV18-14R	22-18	Red	b"	1.050	.433	.399	.831	.156	50	1,000
TV18-516R	22-18	Red	j"	1.186	.551	.472	.866	.156	50	1,000
TV14-6R	16-14	Blue	#6	.870	.250	.325	.745	.185	50	1,000
TV14-8R	16-14	Blue	#8	.900	.310	.325	.745	.185	50	1,000
TV14-10R	16-14	Blue	#10	.900	.310	.325	.745	.185	50	1,000
TV14-14R	16-14	Blue	b"	1.083	.433	.433	.866	.174	50	1,000
TV14-516R	16-14	Blue	j"	1.182	.551	.473	.906	.174	50	1,000
TV14-38R	16-14	Blue	c"	1.348	.709	.551	.995	.174	50	1,000
TV10-6R	12-10	Yellow	#6	.995	.310	.325	.840	.267	25	500
TV10-8R	12-10	Yellow	#8	.995	.310	.325	.840	.267	25	500
TV10-10R	12-10	Yellow	#10	.995	.310	.325	.840	.267	25	500
TV10-14R	12-10	Yellow	b"	1.088	.500	.325	.840	.267	25	500
TV10-516R	12-10	Yellow	j"	1.260	.551	.512	1.260	.267	25	500
TV10-38R	12-10	Yellow	c"	1.490	.709	.590	1.062	.267	25	500
TV10-12R	12-10	Yellow	d"	1.634	.748	.788	.984	.267	25	500
TV8-8R*	8 AWG	Red	#8	1.281	.469	.485	1.115	.318	25	500
TV8-10R*	8 AWG	Red	#10	1.281	.469	.485	1.115	.318	25	500
TV8-14R*	8 AWG	Red	b"	1.281	.469	.485	1.115	.318	25	500
TV8-516R*	8 AWG	Red	j"	1.375	.625	.548	1.173	.318	25	500
TV8-38R*	8 AWG	Red	c"	1.375	.625	.548	1.173	.318	25	500
TV8-12R*	8 AWG	Red	d"	1.719	.813	.735	1.360	.318	25	500
TV6-10R*	6 AWG	Blue	#10	1.531	.469	.579	1.360	.418	10	250
TV6-14R*	6 AWG	Blue	b"	1.531	.469	.579	1.360	.418	10	250
TV6-516R*	6 AWG	Blue	j"	1.625	.625	.610	1.391	.418	10	250
TV6-38R*	6 AWG	Blue	c"	1.625	.625	.610	1.391	.418	10	250
TV6-12R*	6 AWG	Blue	d"	1.813	.813	.673	1.454	.418	10	250

\*Not UL Listed.

†For Bulk Quantities, add "-1" to Catalog Number i.e. TV18-6R-1.



### Non-Insulated Ring Terminals

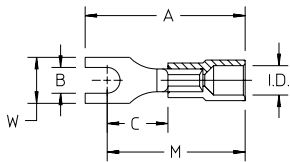
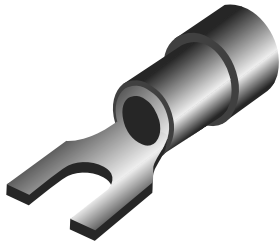


Cat. No.	Wire Range	B Bolt Size	Dimensions					Dist. Bagged Qty.	Bulk† Ctn. Qty.
			A	W	C	M	I.D.		
T18-6R	22-18	#4-#6	.625	.250	.325	.500	.058	50	1,000
T18-8R	22-18	#8	.655	.310	.325	.500	.058	50	1,000
T18-10R	22-18	#10	.655	.310	.325	.500	.058	50	1,000
T14-6R	16-14	#6	.625	.250	.325	.500	.083	50	1,000
T14-8R	16-14	#8	.655	.310	.325	.500	.083	50	1,000
T14-10R	16-14	#10	.655	.310	.325	.500	.083	50	1,000
T10-6R	12-10	#6	.730	.310	.325	.575	.131	25	500
T10-8R	12-10	#8	.730	.310	.325	.575	.131	25	500
T10-10R	12-10	#10	.730	.310	.325	.575	.131	25	500
T10-14R	12-10	b"	.823	.500	.325	.575	.131	25	500

†For Bulk Quantities, add "-1" to Catalog Number i.e. T18-6R-1.

# T&B Crimp Terminals

## Fork Terminals

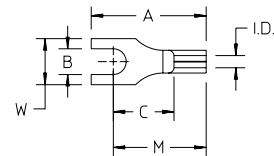
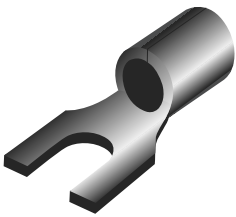


### Vinyl Insulated Fork Terminals



Cat. No.	Wire Range	Ins. Color	B Bolt Size	Dimensions					Dist. Bagged Qty.	Bulk† Ctn. Qty.
				A	W	C	M	I.D.		
TV18-6F	22-18	Red	#6	.870	.250	.325	.745	.160	50	1,000
TV18-8F	22-18	Red	#8	.900	.310	.325	.745	.160	50	1,000
TV18-10F	22-18	Red	#10	.900	.310	.325	.745	.160	50	1,000
TV18-14F	22-18	Red	b"	1.044	.433	.393	.836	.156	50	1,000
TV14-6F	16-14	Blue	#6	.900	.310	.325	.745	.185	50	1,000
TV14-8F	16-14	Blue	#8	.900	.310	.325	.745	.185	50	1,000
TV14-10F	16-14	Blue	#10	.900	.310	.325	.745	.185	50	1,000
TV14-14F	16-14	Blue	b"	1.046	.433	.393	.836	.174	50	1,000
TV10-6F	12-10	Yellow	#6	.994	.310	.325	.840	.267	25	500
TV10-8F	12-10	Yellow	#8	.994	.375	.325	.840	.267	25	500
TV10-10F	12-10	Yellow	#10	.994	.375	.325	.840	.267	25	500
TV10-14F	12-10	Yellow	b"	.994	.500	.325	.840	.267	25	500
TV10-516F	12-10	Yellow	j"	1.345	.551	.428	.984	.267	25	500
TV10-38F	12-10	Yellow	c"	1.424	.709	.507	1.063	.267	25	500

†For Bulk Quantities, add "-1" to Catalog Number i.e. TV18-6F-1.



### Non-Insulated Fork Terminals

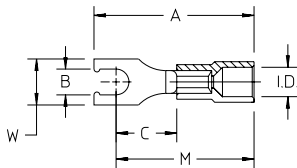
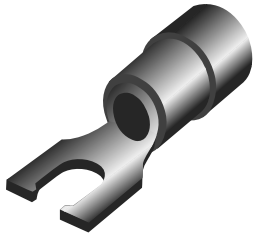


Cat. No.	Wire Range	B Bolt Size	Dimensions					Dist. Bagged Qty.	Bulk† Ctn. Qty.
			A	W	C	M	I.D.		
T18-6F	22-18	#6	.625	.250	.325	.500	.058	50	1,000
T18-8F	22-18	#8	.655	.310	.325	.500	.058	50	1,000
T18-10F	22-18	#10	.655	.310	.325	.500	.058	50	1,000
T14-6F	16-14	#6	.654	.310	.325	.500	.083	50	1,000
T14-8F	16-14	#8	.654	.310	.325	.500	.083	50	1,000
T14-10F	16-14	#10	.654	.310	.325	.500	.083	50	1,000
T10-6F	12-10	#6	.730	.310	.325	.575	.131	25	500
T10-8F	12-10	#8	.760	.375	.325	.575	.131	25	500
T10-10F	12-10	#10	.760	.375	.325	.575	.131	25	500
T10-14F	12-10	b"	.823	.500	.325	.575	.131	25	500

†For Bulk Quantities, add "-1" to Catalog Number i.e. T18-6F-1.

# T&B Crimp Terminals

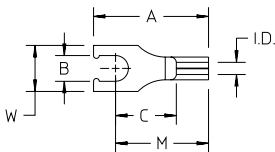
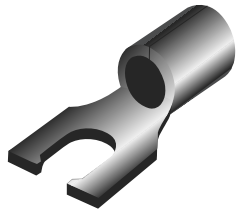
## Locking Fork Terminals



### Vinyl Insulated Locking Fork Terminals

Cat. No.	Wire Range	Ins. Color	B Bolt Size	Dimensions					Dist. Bagged Qty.	Bulk† Ctn. Qty.
				A	W	C	M	I.D.		
TV18-6LF	22-18	Red	#6	.900	.250	.325	.745	.160	50	1,000
TV18-8LF	22-18	Red	#8	.900	.285	.325	.745	.160	50	1,000
TV18-10LF	22-18	Red	#10	.900	.285	.325	.745	.160	50	1,000
TV14-6LF	16-14	Blue	#6	.900	.245	.325	.745	.185	50	1,000
TV14-8LF	16-14	Blue	#8	.900	.285	.325	.745	.185	50	1,000
TV14-10LF	16-14	Blue	#10	.900	.285	.325	.745	.185	50	1,000
TV10-6LF	12-10	Yellow	#6	1.025	.310	.325	.840	.267	25	500
TV10-8LF	12-10	Yellow	#8	1.025	.365	.325	.840	.267	25	500
TV10-10LF	12-10	Yellow	#10	1.025	.365	.325	.840	.267	25	500

†For Bulk Quantities, add "-1" to Catalog Number i.e. TV18-6LF-1.



### Non-Insulated Locking Fork Terminals

Cat. No.	Wire Range	B Bolt Size	Dimensions					Dist. Bagged Qty.	Bulk† Ctn. Qty.
			A	W	C	M	I.D.		
T18-6LF	22-18	#6	.655	.250	.325	.500	.058	50	1,000
T18-8LF	22-18	#8	.655	.285	.325	.500	.058	50	1,000
T18-10LF	22-18	#10	.655	.285	.325	.500	.058	50	1,000
T14-6LF	16-14	#6	.655	.245	.325	.500	.083	50	1,000
T14-8LF	16-14	#8	.655	.285	.325	.500	.083	50	1,000
T14-10LF	16-14	#10	.655	.285	.325	.500	.083	50	1,000
T10-6LF	12-10	#6	.760	.310	.325	.575	.131	25	500
T10-8LF	12-10	#8	.760	.365	.325	.575	.131	25	500
T10-10LF	12-10	#10	.760	.365	.325	.575	.131	25	500

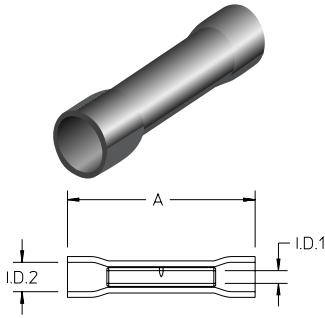
†For Bulk Quantities, add "-1" to Catalog Number i.e. T18-6LF-1.

# T&B Crimp Terminals

## Butt Splices & Disconnects



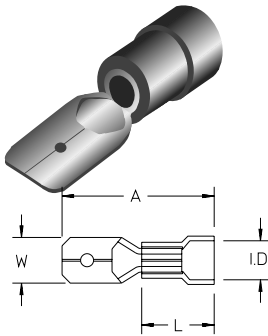
### Vinyl Insulated Butt Splices



Cat. No.	Wire Range	Ins. Color	Dimensions			Dist. Bagged Qty.	Bulk† Ctn. Qty.
			A	I.D.1	I.D.2		
TV18-BS	22-18	Red	1.04	.070	.160	50	1,000
TV14-BS	16-14	Blue	1.04	.100	.186	50	1,000
TV10-BS	12-10	Yellow	1.07	.144	.250	25	500

†For Bulk Quantities, add "-1" to Catalog Number i.e. TV18-BS-1.

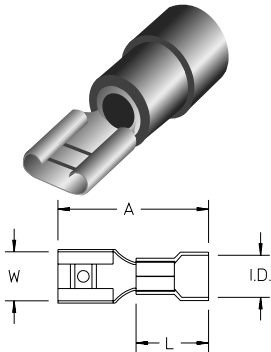
### Vinyl Insulated Male Disconnects – 250 Series



Cat. No.	Wire Range	Ins. Color	Dimensions				Thk. of Tab	Dist. Bagged Qty.	Bulk† Ctn. Qty.
			A	W	L	I.D.			
TV18-250MD	22-18	Red	.875	.248	.443	.157	.032	50	1,000
TV14-250MD	16-14	Blue	.875	.248	.443	.174	.032	50	1,000
TV10-250MD	12-10	Yellow	.985	.248	.556	.267	.032	25	500

†For Bulk Quantities, add "-1" to Catalog Number i.e. TV18-250MD-1.

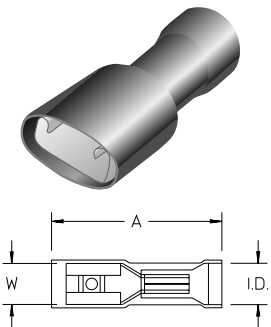
### Vinyl Insulated Female Disconnects – 250 Series



Cat. No.	Wire Range	Ins. Color	Dimensions				Thk. of Tab	Dist. Bagged Qty.	Bulk† Ctn. Qty.
			A	W	L	I.D.			
TV18-250FD	22-18	Red	.870	.261	.450	.157	.032	50	1,000
TV14-250FD	16-14	Blue	.870	.261	.450	.174	.032	50	1,000
TV10-250FD	12-10	Yellow	.982	.261	.560	.267	.032	25	1,000

†For Bulk Quantities, add "-1" to Catalog Number i.e. TV18-250FD-1.

### Fully Insulated Vinyl Female Disconnects – 250 Series

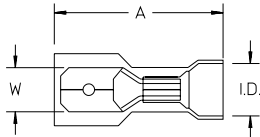


Cat. No.	Wire Range	Ins. Color	Dimensions			Thk. of Tab	Dist. Bagged Qty.	Bulk† Ctn. Qty.
			A	W	I.D.			
TVF18-250FD	22-18	Red	.860	.261	.157	.032	50	1,000
TVF14-250FD	16-14	Blue	.885	.261	.190	.032	50	1,000
TVF10-250FD	12-10	Yellow	.975	.261	.258	.032	25	500

†For Bulk Quantities, add "-1" to Catalog Number i.e. TVF18-250FD-1.

# T&B Crimp Terminals

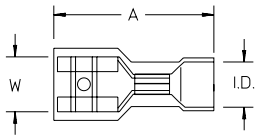
## Disconnects



### Fully Insulated Nylon Male Disconnects – 250 Series

Cat. No.	Wire Range	Ins. Color	Dimensions			Thk. of Tab	Dist. Bagged Qty.	Bulk† Ctn. Qty.
			A	W	I.D.			
TNF18-250MD	22-18	Red	.840	.248	.154	.032	50	1,000
TNF14-250MD	16-14	Blue	.840	.248	.184	.032	50	1,000
TNF10-250MD	12-10	Yellow	.935	.248	.264	.032	25	500

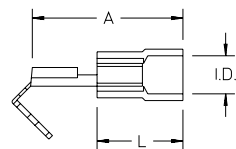
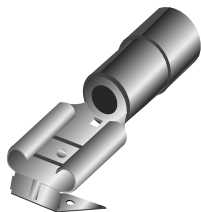
†For Bulk Quantities, add "-1" to Catalog Number i.e. TNF18-250MD-1.



### Fully Insulated Nylon Female Disconnects – 250 Series

Cat. No.	Wire Range	Ins. Color	Dimensions			Thk. of Tab	Dist. Bagged Qty.	Bulk† Ctn. Qty.
			A	W	I.D.			
TNF18-250FD	22-18	Red	.840	.261	.154	.032	50	1000
TNF14-250FD	16-14	Blue	.840	.261	.184	.032	50	1000
TNF10-250FD	12-10	Yellow	.935	.261	.264	.032	25	500

†For Bulk Quantities, add "-1" to Catalog Number i.e. TNF18-250FD-1.



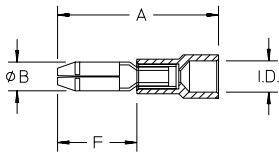
### Vinyl Insulated Piggyback Disconnects – 250 Series

Cat. No.	Wire Range	Ins. Color	Dimensions			Thk. of Tab	Dist. Bagged Qty.	Bulk† Ctn. Qty.
			A	L	I.D.			
TV18-250PD	22-18	Red	.870	.450	.157	.032	50	1,000
TV14-250PD	16-14	Blue	.870	.450	.174	.032	50	1,000
TV10-250PD	12-10	Yellow	.985	.560	.267	.032	25	500

†For Bulk Quantities, add "-1" to Catalog Number i.e. TV18-250PD-1.

# T&B Crimp Terminals

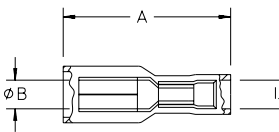
## Bullet Connectors



### Vinyl Insulated Male Bullet Connectors – 4mm (.156")

Cat. No.	Wire Range	Ins. Color	øB Bullet Dia.	Dimensions			Dist. Bagged Qty.	Bulk† Ctn. Qty.
				A	F	I.D.		
TV18-4MB	22-18	Red	.156	.874	.433	.170	50	1,000
TV14-4MB	16-14	Blue	.156	.874	.433	.176	50	1,000

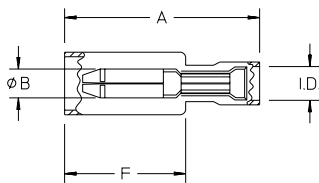
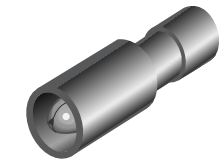
†For Bulk Quantities, add "-1" to Catalog Number i.e. TV18-4MB-1.



### Fully Insulated Vinyl Female Bullet Connectors – 4mm (.156")

Cat. No.	Wire Range	Ins. Color	øB Bullet Dia.	Dimensions		Dist. Bagged Qty.	Bulk† Ctn. Qty.
				A	I.D.		
TVF18-4FB	22-18	Red	.150	.915	.157	50	1,000
TVF14-4FB	16-14	Blue	.150	.940	.187	50	1,000

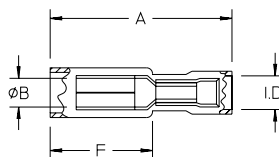
†For Bulk Quantities, add "-1" to Catalog Number i.e. TVF18-4FB-1.



### Fully Insulated Nylon Male Bullet Connectors

Cat. No.	Wire Range	Ins. Color	øB Bullet Dia.	Dimensions			Dist. Bagged Qty.	Bulk† Ctn. Qty.
				A	F	I.D.		
TNF18-4MB	22-18	Red	.156	1.061	.625	.156	50	1,000
TNF14-4MB	16-14	Blue	.156	1.061	.625	.178	50	1,000

†For Bulk Quantities, add "-1" to Catalog Number i.e. TNF18-4MB-1.



### Fully Insulated Nylon Female Bullet Connectors

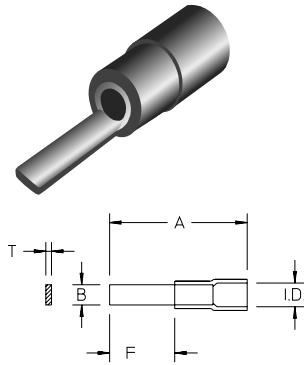
Cat. No.	Wire Range	Ins. Color	øB Bullet Dia.	Dimensions			Dist. Bagged Qty.	Bulk† Ctn. Qty.
				A	F	I.D.		
TNF18-4FB	22-18	Red	.156	1.000	.560	.156	50	1,000
TNF14-4FB	16-14	Blue	.156	1.000	.560	.178	50	1,000

†For Bulk Quantities, add "-1" to Catalog Number i.e. TNF18-4FB-1.



# T&B Crimp Terminals

## Blade Terminals, Pin Terminals



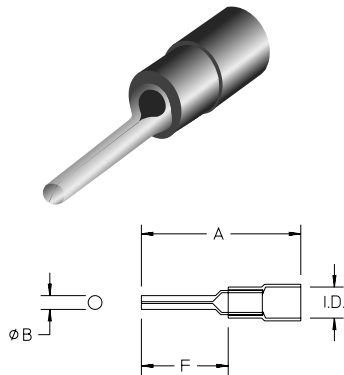
### Vinyl Insulated Straight Blade Terminals

Cat. No.	Wire Range	Ins. Color	Dimensions					Dist. Bagged Qty.	Bulk† Ctn. Qty.	
			B	F (mm)	F (in.)	A	T			I.D.
TV18-10BL	22-18	Red	.087	10	.394	.850	.031	.173	50	1,000
TV18-18BL	22-18	Red	.087	18	.709	1.174	.031	.173	50	1,000
TV14-10BL	16-14	Blue	.087	10	.394	.855	.031	.177	50	1,000
TV14-18BL	16-14	Blue	.087	18	.709	1.178	.031	.177	50	1,000
TV10-10BL	12-10	Yellow	.110	10	.394	.962	.039	.266	25	500

†For Bulk Quantities, add "-1" to Catalog Number i.e. TV18-10BL-1.



### Vinyl Insulated Straight Pin Terminals

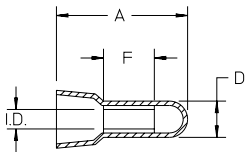
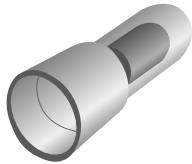


Cat. No.	Wire Range	Ins. Color	Dimensions				Dist. Bagged Qty.	Bulk† Ctn. Qty.	
			F (mm)	F (in.)	B Dia.	A			I.D.
TV18-12PT	22-18	Red	12	.472	.075	.920	.173	50	1,000
TV14-12PT	16-14	Blue	12	.472	.075	.920	.177	50	1,000
TV10-14PT	12-10	Yellow	14	.551	.106	1.102	.266	25	500

†For Bulk Quantities, add "-1" to Catalog Number i.e. TV18-12PT-1.

# T&B Crimp Terminals

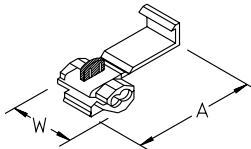
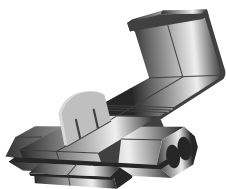
## Wire Joints, Quick Splices, Crimping Tools



### Nylon Wire Joints

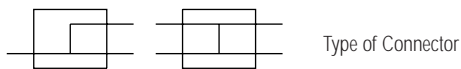
Cat. No.	Wire Range		Dimensions				Dist. Bagged Qty.	Bulk† Ctn. Qty.
	Min.	Max.	D	A	I.D.	F		
TN18-WJ	4 #22	3 #18	.197	.713	.106	.276	50	1,000
TN14-WJ	2 #16	2 #14	.220	.827	.130	.276	50	1,000
TN10-WJ	2 #12	1 #10	.280	1.004	.173	.295	25	500

†For Bulk Quantities, add "-1" to Catalog Number i.e. – TN18-WJ-1.

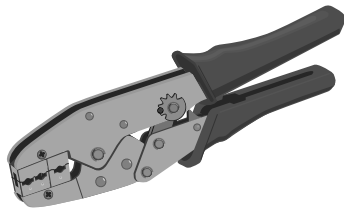


### Multiple Quick Splices

Cat. No.	Wire Range	Ins. Color	Dimensions		Dist. Bagged Qty.	Bulk† Ctn. Qty.
			W	A		
TV18-00QS	22-18 AWG	Red	.875	1.208	25	250
TV14-00QS	16-14 AWG	Blue	.785	1.208	25	250
TV10-00QS	12-10 AWG	Yellow	.840	1.366	10	100

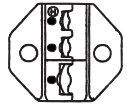
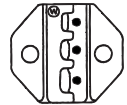
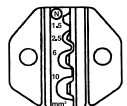


†For Bulk Quantities, add "-1" to Catalog Number i.e. – TV18-00QS-1.



### 9" Ratchet Crimping Tool

Cat. No.	Description	Std. Pkg.
CT503	9" Ratchet Crimping Tool with interchangeable die sets H & W included.	1

Cat. No.	Description	Use Die with Terminal Size
 CT503H	Die set H for Insulated Terminals	TV18, TV14, TV10, TVF18, TVF14, TVF10, TN18, TN14, TN10, TNF18, TNF14, TNF10-C
 CT503W	Die set W for Insulated Butt Splicer	TV18-BS, TV14-BS, TV10-BS
 CT503N	Die set N for Non Insulated Terminals	T18, T14, T10

CT503H and CT503W are included in purchase of CT503 hand tool. All dies for CT503 crimping tool may be ordered separately.

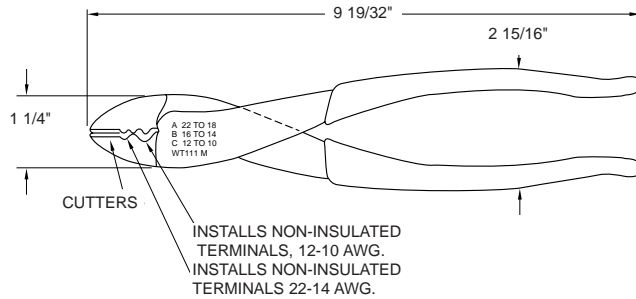
# T&B Crimp Terminals

## Crimping Tools



### Plier Type Tool

Cat. No.	Description	Std. Pkg.	Wt. Each
<b>WT111M</b>	Plier tool with cutter for 22-10 AWG non-insulated terminals	1	1

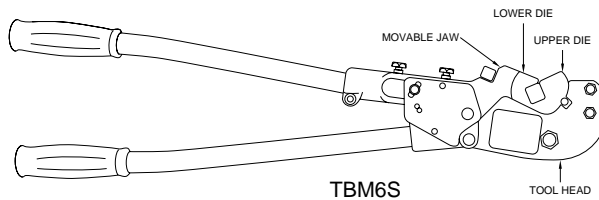


WT111M



### Toggle Type Hand Tool with Shure Stake®

Cat. No.	Description	Std. Pkg.	Wt. Ea.
<b>TBM6S</b>	Hand tool with Shure Stake® for 8-6 AWG, vinyl insulated terminals, (dies not included)	1	9



### Installing Dies for TM6S Tool

	Cat. No. Die Set	Term. Size	Gaging ± .010
	<b>11822</b>	TV8	.202
	<b>11823</b>	TV6	.254