



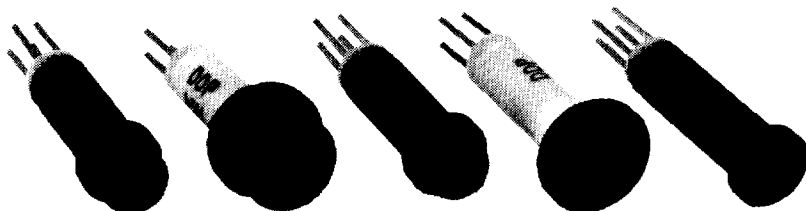
Data Display Products®

# .250" MOUNT PANEL LIGHTS

*Built-In Driver*

- Two Circuit Types Available, Internal Driving Transistor
- Mounting Hardware Provided

Cartridge <sup>[1]</sup>	Model	LED		Electrical Assembly <sup>[3]</sup>	Test Terminal	Lens		Bezel Color		
		Color	Circuit Type <sup>[2]</sup>			Diffusion	Color			
C Optional	F41	-AR	RED	Logic 1	5	T Optional	-C Clear	R	0	
	F44	-AA	AMB	Logic 1				5H	Red	Black
	F46	-AG	GRN	Logic 1				28		
	F461	-DR	RED	Logic 0		-N Diffused	A	9		
	F464	-DA	AMB	Logic 0			Amber	White		
		-DG	GRN	Logic 0						
					Y Yellow					
					G Green					
					W Water Clear					
					S <sup>[5]</sup> Smoke					



Electrical Assembly				
Circuit Type	Assembly <sup>[4]</sup>			Unit
	AX5 DX5	AX5H DX5H	AX28 DX28	
Vcc	5	5	28	Vdc
Icc	20	30	12	MA
Vin	ON	A Circuits=2.4min D Circuits=(Vcc-4)max	A Circuits=12min D Circuits=12max	Vdc
	OFF	A Circuits=0.6max D Circuits=(Vcc-0.6)max (Non-Sink Condition)	A Circuits=0.6max D Circuits=27.4max (Non-Sink Condition)	
Iin	ON	0.8		MA
	OFF	-0.01		

- [1] The C option is for panel lights mounted in the PS40 or PS44 socket (pg. 55). Mounting hardware is included with the socket.
- [2] Refer to circuit diagrams for Circuit A (Logic 1) and Circuit D (Logic 0).
- [3] Refer to Electrical Assembly Table for electrical data.
- [4] Replace X with color (R)ed, (A)mber, or (G)reen.
- [5] Omit lens diffusion when selecting Smoke lens. (e.g. F41-DR5HT-S0).

**To Order:** Select one **BOLD** component from each **SHADED** column in the table except as noted.  
**Example:** Part Number **F41-AG5HT-CGO:**

Model	LED	Electrical Assembly	Test Terminal	Lens		Bezel Color
				Diffusion	Color	
F41	-AG	5H	T	-C	G	0

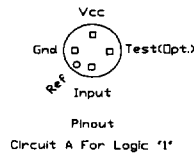
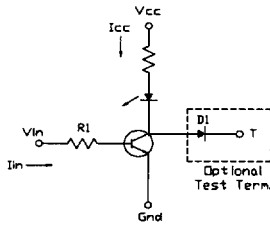
Continued...



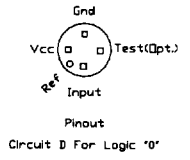
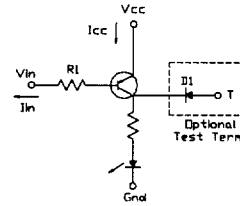
Data Display Products®

# .250" MOUNT PANEL LIGHTS

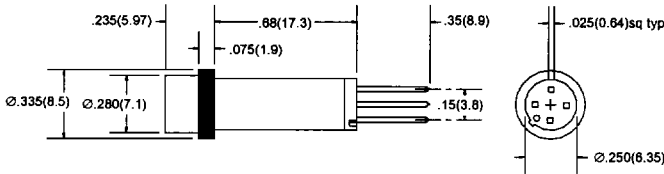
Built-In Driver



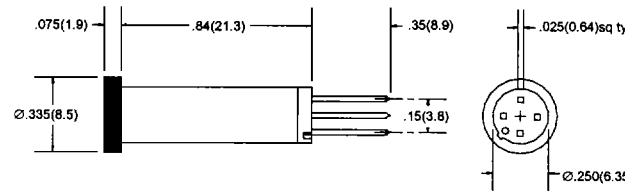
**Circuit A  
Logic 1**



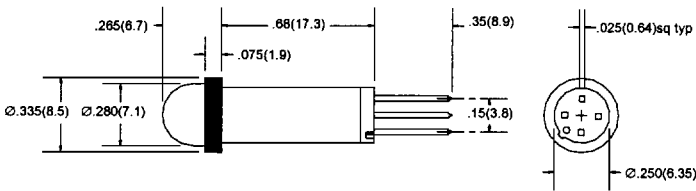
**Circuit D  
Logic 0**



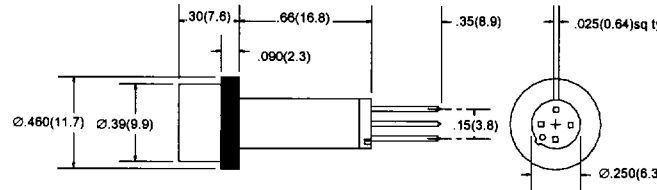
**F41**



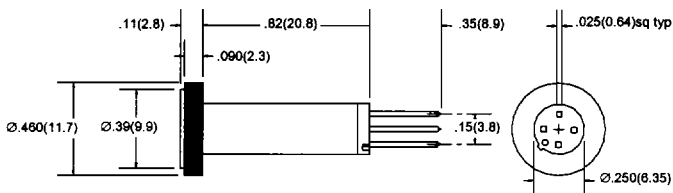
**F44 (flush lens)**



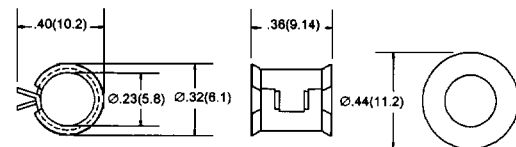
**F46**



**F461**



**F464**



**TC4 & NW4 Mounting Hardware  
See note [1]**

All dimensions are in inches(mm)  
Tolerances: .xx"(x) ±.025"(.63) / .xxx"(xx) ±.010"(.25)  
Specifications are subject to change without notice.