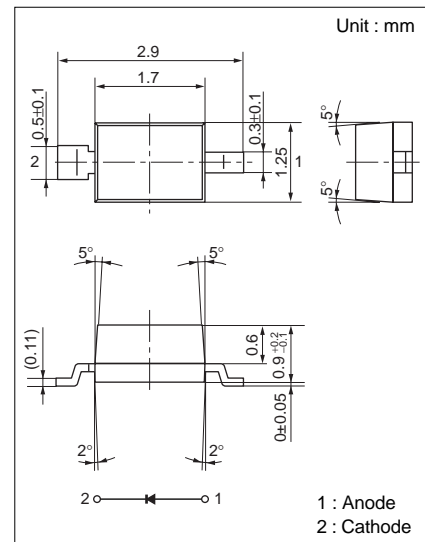


S-GW Type

Type No. Lighting Color
 LN1871R-(TR) Orange



Absolute Maximum Ratings (Ta=25°C)

Lighting Color	P _D (mW)	I _F (mA)	I _{FP} (mA)*	V _R (V)	T _{opr} (°C)	T _{stg} (°C)
Orange	60	20	60	3	-25 ~ +85	-30 ~ +100

*The condition of I_{FP} is duty 10%, Pulse width 1 msec

Electro-Optical Characteristics (Ta=25°C)

Type No.	Lighting Color	Lens Color	I _O		I _F	V _F		λ _P	Δλ	I _F	I _R	
			typ	min		typ	max				max	V _R
LN1871R-(TR)	Orange	Orange Diffused	1.0	0.4	10	1.93	2.6	630	40	10	10	3
Unit	—	—	mcd	mcd	mA	V	V	nm	nm	mA	μA	V

