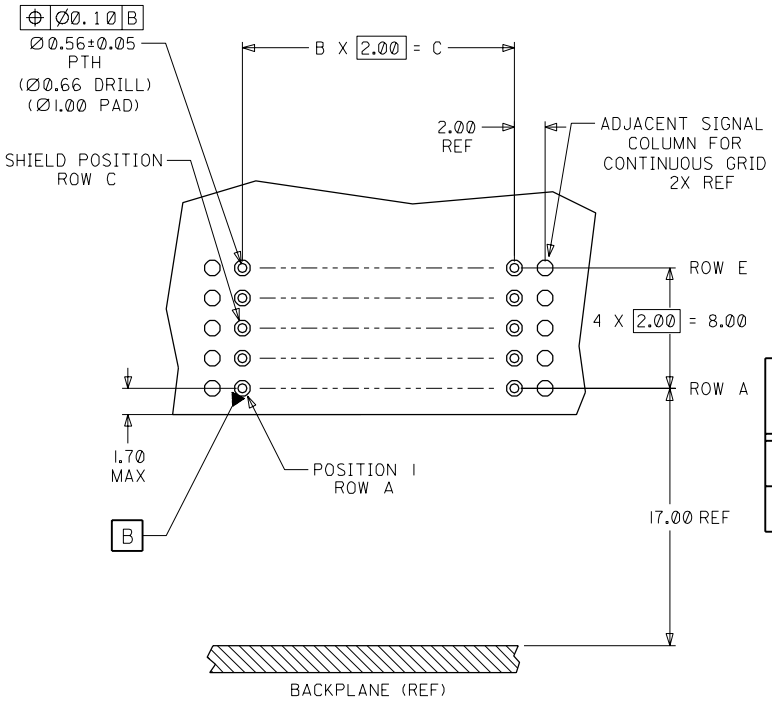
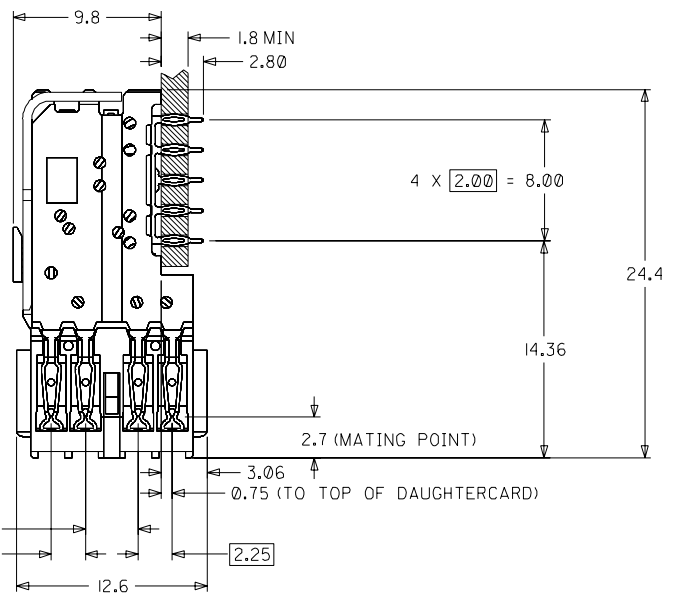
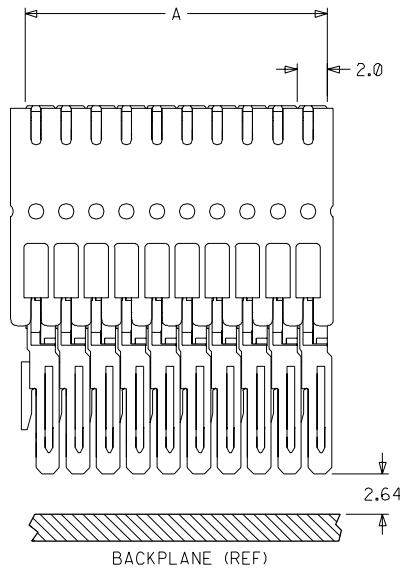
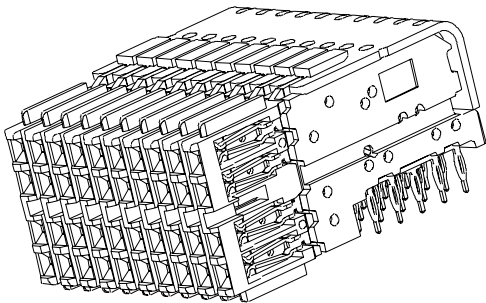
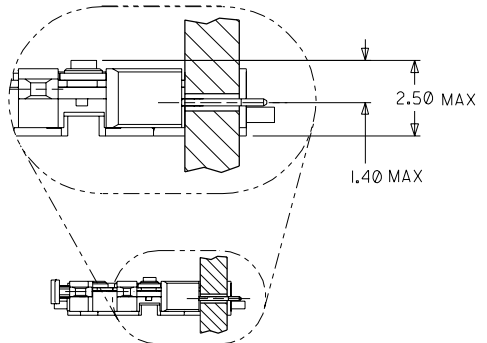


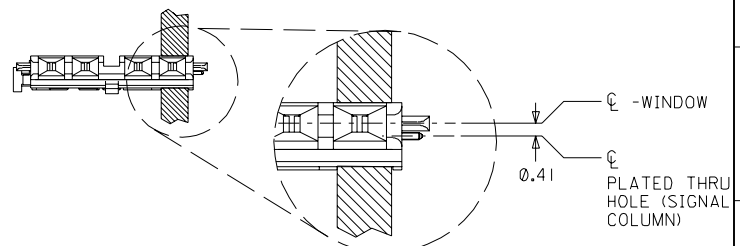
NOTES: (UNLESS OTHERWISE SPECIFIED)

- MATERIALS: HOUSING - LIQUID CRYSTAL POLYMER (LCP), GLASS-FILLED, UL94V-0. TERMINALS - HIGH PERFORMANCE COPPER ALLOY.
- FINISH: SELECTIVE GOLD (Au) IN CONTACT AREA, SELECTIVE TIN/LEAD (Sn/Pb) ON PCB TAILS, NICKEL (Ni) OVERALL.
- REFER TO MOLEX PRODUCT SPECIFICATION PS-74031-999 FOR PERFORMANCE SPECIFICATIONS.
- SIGNAL WAFERS SUPPLIED ON STAINLESS STEEL STIFFENER IN GROUPS OF 10 OR 25 ONLY.

MATERIAL NUMBER	MINIMUM GOLD PLATING	WAFER PLASTIC COLOR
74671-0001	0.00076mm (30uIN)	BLACK
74671-0051	0.00127mm (50uIN)	GRAY



NUMBER OF SIGNAL WAFERS	A	B	C
10	20.0	9	18.00
25	50.0	24	48.00



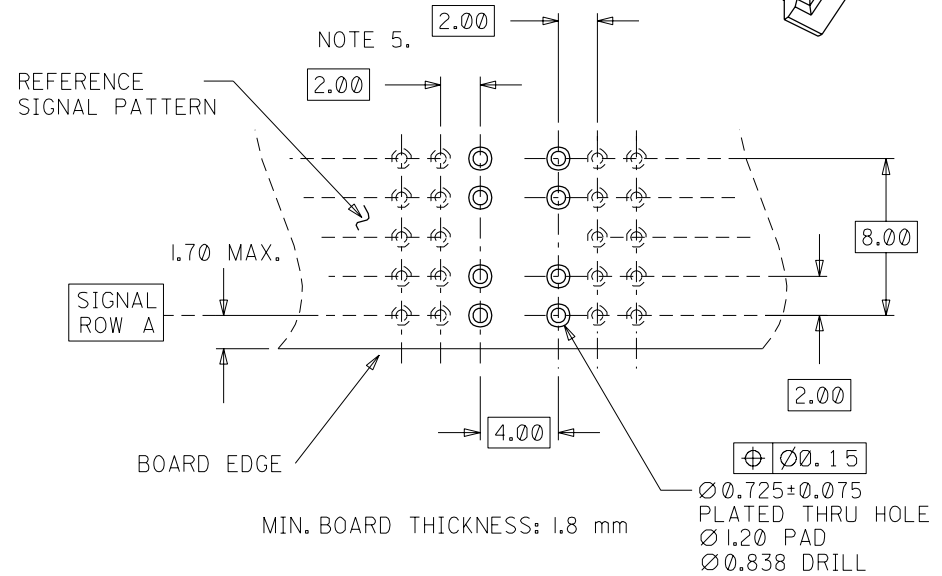
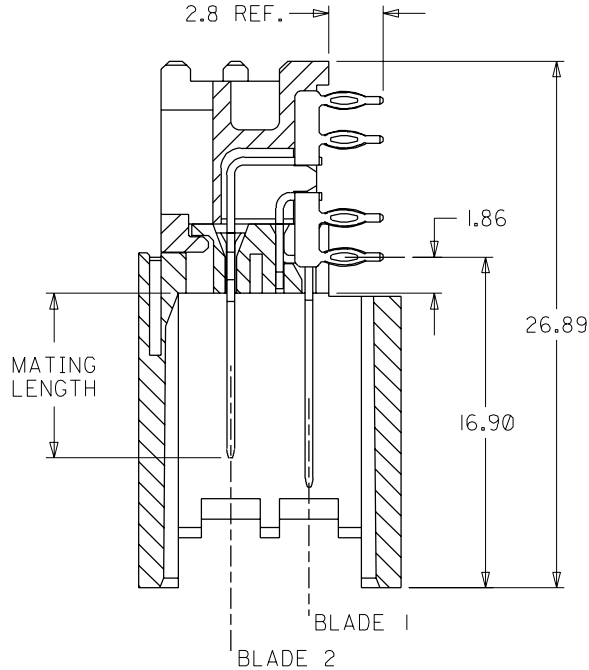
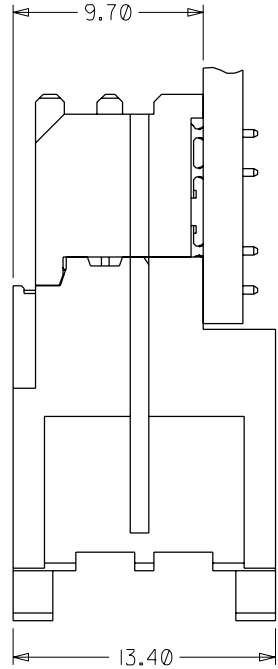
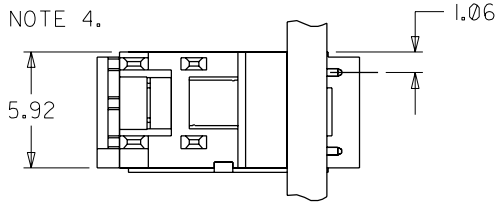
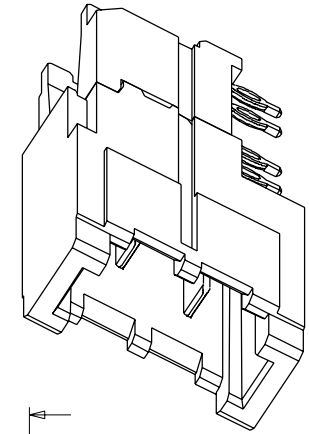
DAUGHTERCARD HOLE PATTERN (CONNECTOR SIDE)

INITIAL RELEASE EC NO. UDT2001-1458 DRWN: MARTIN 01/06/05 CHK: LAURX 01/06/05 APPR: BIXLER 01/06/05	QUALITY SYMBOLS MAJOR = 0 CRITICAL = 0	GENERAL TOLERANCES: (UNLESS SPECIFIED) mm INCH	SCALE: 4 : 1 DESIGN UNITS: <input checked="" type="checkbox"/> mm <input type="checkbox"/> INCH	DIMENSIONS: <input type="checkbox"/> mm <input type="checkbox"/> INCH <input checked="" type="checkbox"/> mm ONLY	SHT REV REVISE ON CAD ONLY
		DRAWN BY & DATE MARTIN 01/06/05	TITLE: VHDM - HSD5 ROW DAUGHTERCARD SIGNAL WAFER SALES DRAWING		
		CHECKED BY & DATE LAURX 01/06/05	MOLEX MOLEX INCORPORATED		
		APPROVED BY & DATE BIXLER 01/06/05	CAD FILENAME S7467102.DGN	MATERIAL NO. SEE CHART	DRAWING NO. SD-74671-002
DRAFT WHERE APPLICABLE MUST REMAIN WITHIN DIMENSIONS		THIS DRAWING CONTAINS INFORMATION THAT IS PROPRIETARY TO MOLEX INCORPORATED AND SHOULD NOT BE USED WITHOUT WRITTEN PERMISSION.			

MATERIAL NUMBER ASSIGNMENT

74026 - 5 * * 0 (NOTE 2., 3.)

BLADE 1 MATING LENGTH	BLADE 2 MATING LENGTH
1 = 8.4 mm	1 = 8.4 mm
2 = 9.9 mm	2 = 9.9 mm
3 = 11.4 mm	3 = 11.4 mm
6 = 8.4 mm	6 = 8.4 mm
7 = 9.9 mm	7 = 9.9 mm
8 = 11.4 mm	8 = 11.4 mm



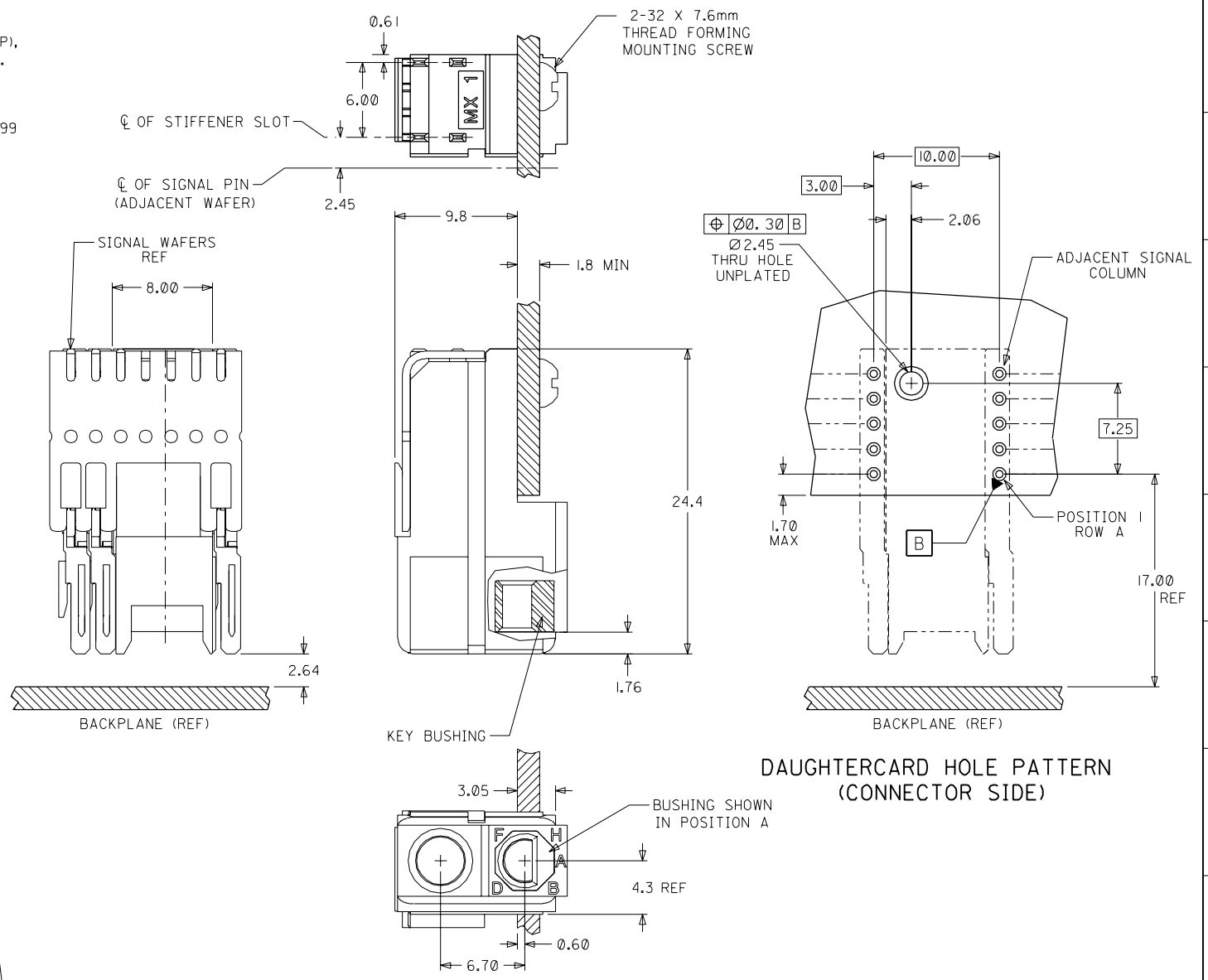
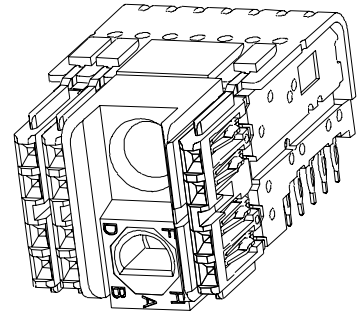
- NOTES:
1. MATERIALS: HOUSING - GLASS FILLED LIQUID CRYSTAL POLYMER, UL 94V-0, BLACK; TERMINAL - COPPER ALLOY.
 2. FINISH: SELECT GOLD IN CONTACT AREA, 30 microINCH THICK; TIN/LEAD IN COMPLIANT AREA. (WHEN * = 1, 2, OR 3)
 3. FINISH: SELECT GOLD IN CONTACT AREA, 50 microINCH THICK; TIN/LEAD IN COMPLIANT AREA. (WHEN * = 6, 7, OR 8)
 4. USE 6.0 mm NOMINAL FOR POWER ASSEMBLY LAYOUT.
 5. THIS DIMENSION TO BE MULTIPLE OF 2.00 mm AS REQUIRED.

INITIAL RELEASE EC No. UDT2001-0940 DRW/NELO 01/05/01 CHK: GORSKI 01/05/03 APPR: BIXLER 01/05/07	QUALITY SYMBOLS MAJOR = 0 CRITICAL = 0	GENERAL TOLERANCES: (UNLESS SPECIFIED)		SCALE 4 : 1	DESIGN UNITS <input checked="" type="checkbox"/> mm <input type="checkbox"/> INCH	THIRD ANGLE PROJECTION	DIMENSIONS: <input type="checkbox"/> mm <input type="checkbox"/> INCH <input checked="" type="checkbox"/> mm ONLY	SHT	REV
		mm	INCH	DRAWN BY & DATE ELO 01/05/01	TITLE: HSD POWER 5 ROW DAUGHTERCARD SALES ASSEMBLY				
A	REV	4 PLACES ±0.	±.	CHECKED BY & DATE GORSKI 01/05/03	MOLEX INCORPORATED				
		3 PLACES ±0.	±.	APPROVED BY & DATE BIXLER 01/05/07	MATERIAL NO. SEE CHART	DRAWING NO. SD-74026-006	SHEET NO. 1 OF 1		
		2 PLACES ±0.	±.	CAD FILENAME SD-74026-.S01	SIZE B				
		1 PLACE ±0.	±.	THIS DRAWING CONTAINS INFORMATION THAT IS PROPRIETARY TO MOLEX INCORPORATED AND SHOULD NOT BE USED WITHOUT WRITTEN PERMISSION.					

NOTES: (UNLESS OTHERWISE SPECIFIED)

1. MATERIALS: HOUSING - LIQUID CRYSTAL POLYMER (LCP), GLASS-FILLED, UL94V-0, BLACK.
KEY BUSHING - STAINLESS STEEL.
2. FINISH: NONE.
3. REFER TO MOLEX PRODUCT SPECIFICATION PS-74031-999 FOR PERFORMANCE SPECIFICATIONS.

MATERIAL NUMBER	BUSHING CLOCK POSITION	
74677-0005	NONE	
74677-5001	A	
74677-5002	B	
74677-5003	C	
74677-5004	D	
74677-5005	E	
74677-5006	F	
74677-5007	G	
74677-5008	H	



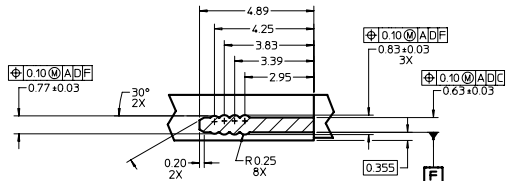
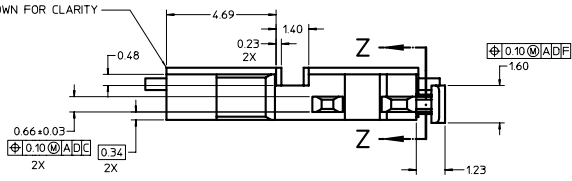
INITIAL RELEASE EC NO. UDT2001-1458 DRWN: MARTIN 01/05/29 CHK: LAURX 01/05/29 APPR: BIXLER 01/05/29	QUALITY SYMBOLS MAJOR = ① CRITICAL = ②	GENERAL TOLERANCES: (UNLESS SPECIFIED)		SCALE 4 : 1	DESIGN UNITS <input checked="" type="checkbox"/> mm <input type="checkbox"/> INCH	DIMENSIONS: <input type="checkbox"/> mm <input type="checkbox"/> INCH <input checked="" type="checkbox"/> mm ONLY	SHT REV REVISE ON CAD ONLY
		4 PLACES ±0. -- ±. -- 3 PLACES ±0. -- ±. -- 2 PLACES ±0.13 ±. -- 1 PLACE ±0.25 ±. --		DRAWN BY & DATE MARTIN 01/05/29		TITLE: VHDM - HSD 5 ROW DAUGHTERCARD GUIDE MODULE SALES DRAWING	
		ANGULAR: ± 2°		CHECKED BY & DATE LAURX 01/05/29		APPROVED BY & DATE BIXLER 01/05/29	
		DRAFT WHERE APPLICABLE MUST REMAIN WITHIN DIMENSIONS		CAD FILENAME WORKMANAGER		MATERIAL NO. SEE CHART DRAWING NO. SD-74677-006	

20 19 18 17 16 15 14 13 12 11 74678 9 8 7 6 5 4 3 2 1

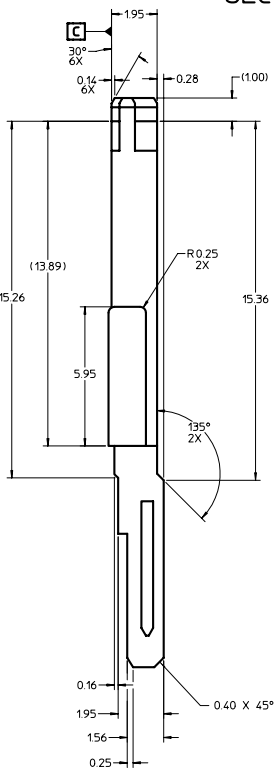
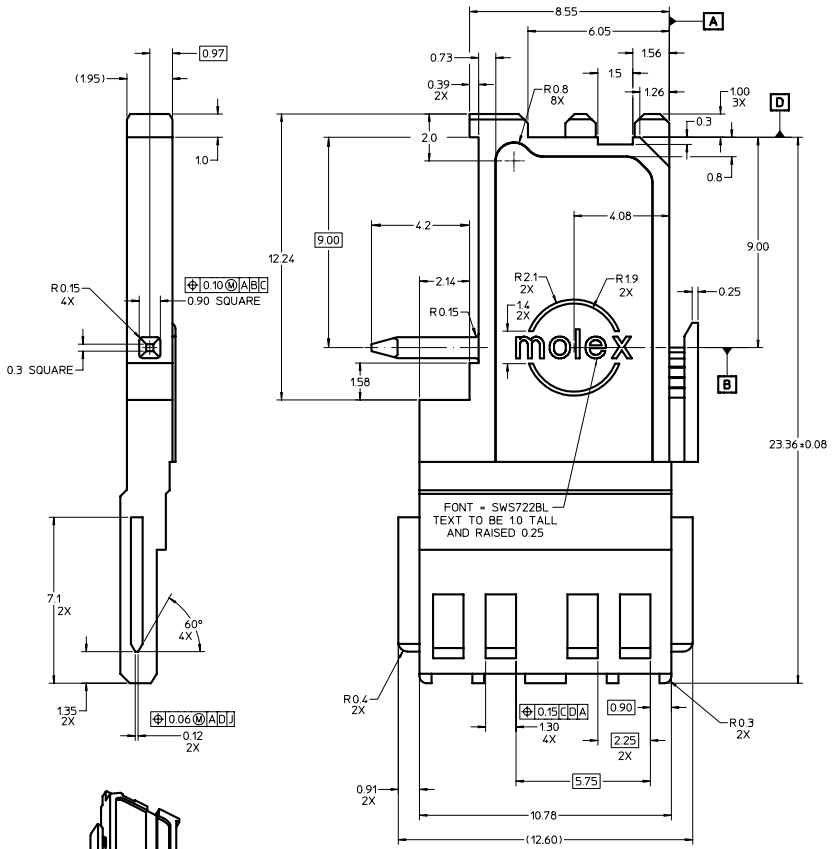
NOTES (UNLESS OTHERWISE SPECIFIED):

1. MATERIAL: VECTRA L130 (LCP), COLOR: BLACK (D2)
PER MOLEX MATERIAL NUMBER 89992-0057.
2. 0.10 MAXIMUM ALLOWABLE FLASH
3. 0.08 MAXIMUM ALLOWABLE GATE VESTIGE
4. PART MAY BE PRODUCED WITH OR WITHOUT PEGS.
SEE CHART FOR APPROPRIATE MATERIAL NUMBERS.

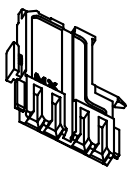
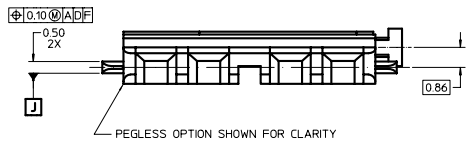
MATERIAL NUMBER	PEG STATUS
74678-0001	WITHOUT PEG
74678-0002	WITH PEG



SECTION Z-Z



SECTION Y-Y



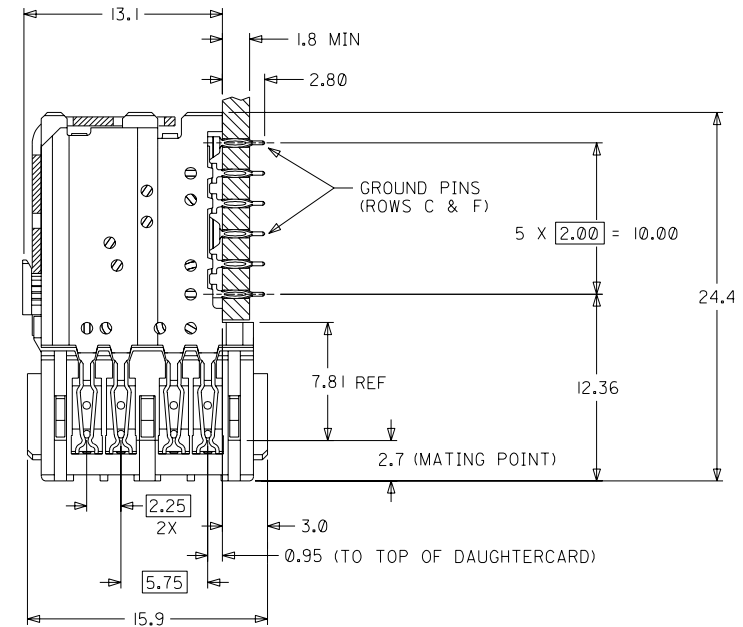
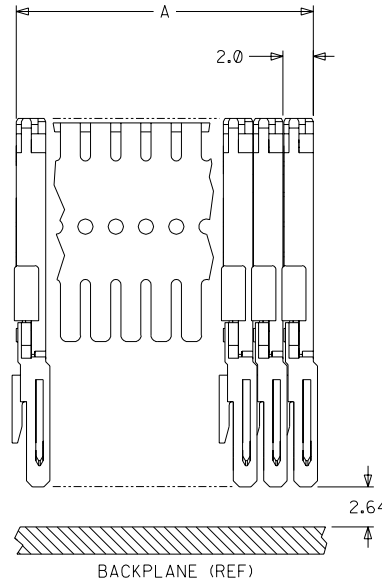
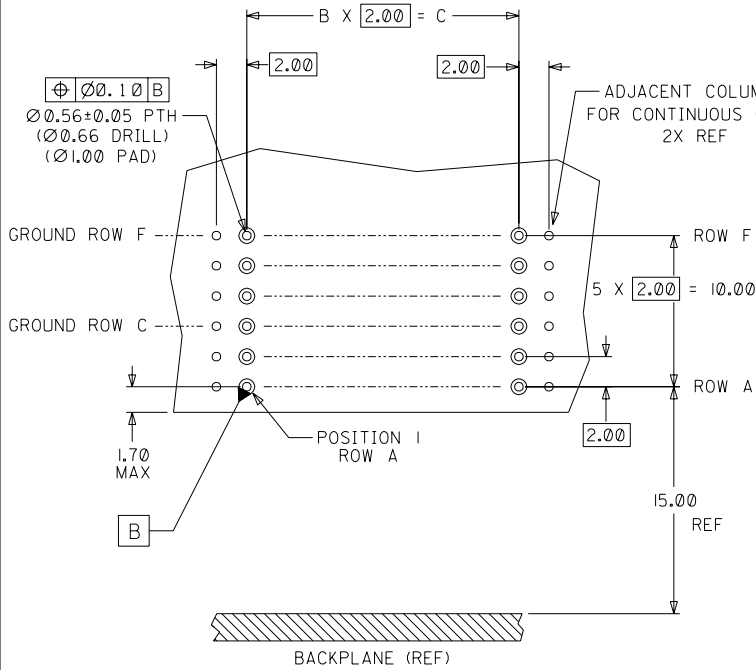
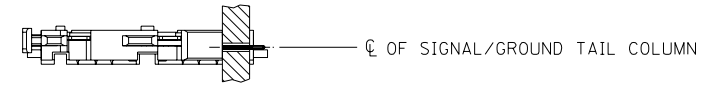
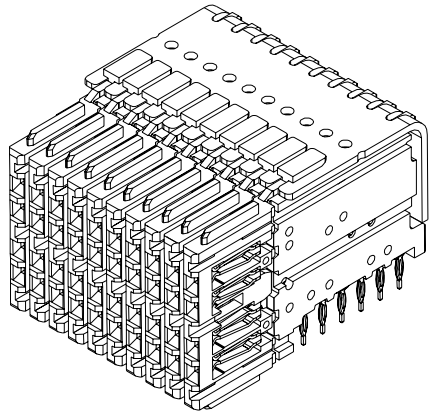
ADD PEGGED OPTION EC NO: UDT2001-1507 DRAWN BY: JLAURX 2001/10/11 CHKD BY: NMARTIN 2001/10/11 APPR: CBIXLER 2001/10/12	QUALITY SYMBOLS	GENERAL TOLERANCES (UNLESS SPECIFIED)	SCALE 10:1	DESIGN UNITS METRIC	THIRD ANGLE PROJECTION	REVISE ON CAD ONLY	
	▽-0	mm INCH	DIMENSION STYLE MM ONLY		TITLE		
	▽-0	4 PLACES ± --- ± --- 3 PLACES ± --- ± --- 2 PLACES ± 0.05 ± --- ± --- 1 PLACE ± 0.13 ± --- ± ---	DRAWN BY: JLAURX CHECKED BY: NMARTIN	DATE: 01/04/11	HSD 5 ROW DAUGHTERCARD END CAP		
	DRAFT WHERE APPLICABLE MUST REMAIN WITHIN DIMENSIONS	ANGULAR ± 2 °	APPROVED BY: CBIXLER DATE: 01/04/11	MATERIAL NO: 89992-0057 DOCUMENT NO: E-74678-001	MOLEX MOLEX INCORPORATED SEE CHART E-74678-001 1 OF 1		

19 18 17 16 15 14 13 12 11 10 9 8 7 6 5 4 3 2 1

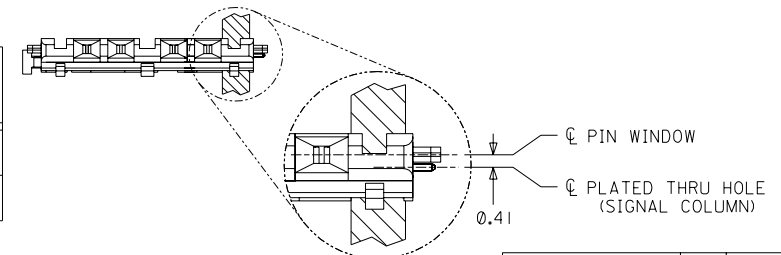
NOTES: (UNLESS OTHERWISE SPECIFIED)

- MATERIALS: HOUSING - LIQUID CRYSTAL POLYMER (LCP), GLASS-FILLED, UL94V-0. TERMINALS - HIGH PERFORMANCE COPPER ALLOY.
- FINISH: SELECTIVE GOLD (Au) IN CONTACT AREA, SELECTIVE TIN/LEAD (Sn/Pb) ON PCB TAILS, NICKEL (Ni) OVERALL.
- REFER TO MOLEX PRODUCT SPECIFICATION PS-74031-999 FOR PERFORMANCE SPECIFICATIONS.
- SIGNAL WAFERS SUPPLIED ON STAINLESS STEEL STIFFENER IN GROUPS OF 10 OR 25 ONLY.

MATERIAL NUMBER	MINIMUM GOLD PLATING	WAFER PLASTIC COLOR
74881-0001	0.00076mm (30uIN)	BLACK
74881-0051	0.00127mm (50uIN)	GRAY



NUMBER OF SIGNAL WAFERS	A	B	C
10	20.0	9	18.00
25	50.0	24	48.00



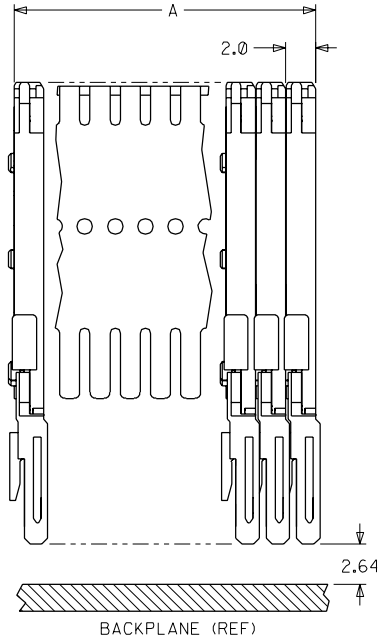
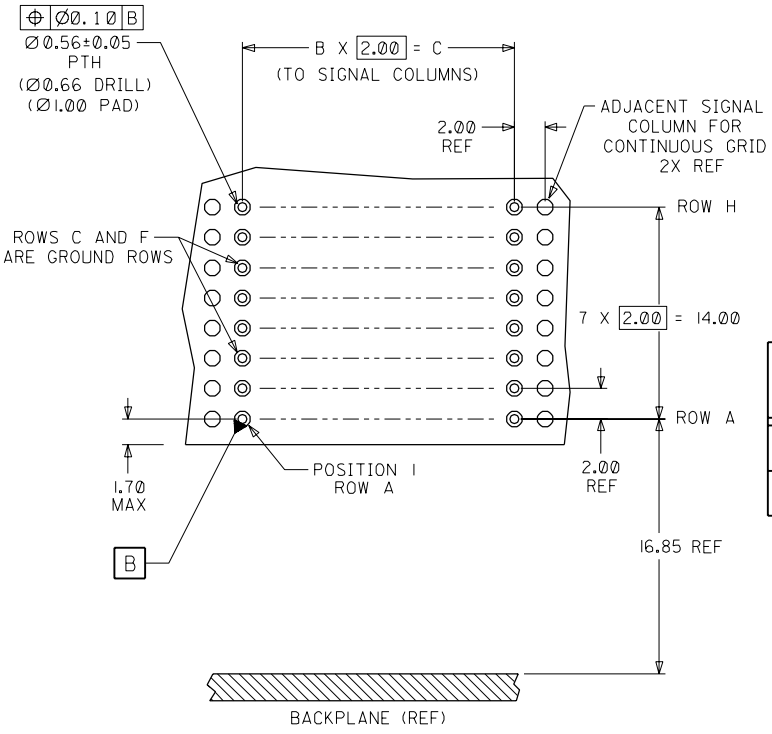
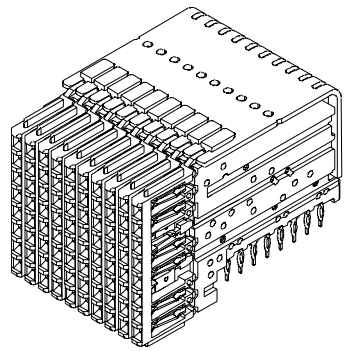
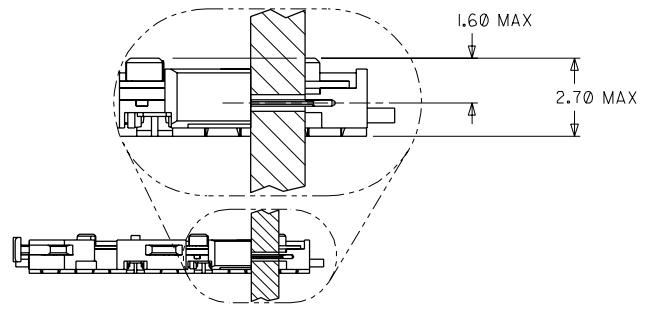
DAUGHTERCARD HOLE PATTERN (CONNECTOR SIDE)

INITIAL RELEASE EC NO. UCP2003-1577 DRWN: LAURX 03/01/20 CHK: MARTIN 03/01/20 APPR: BIXLER 03/01/20	QUALITY SYMBOLS MAJOR = 0 CRITICAL = 0	GENERAL TOLERANCES: (UNLESS SPECIFIED) mm INCH 4 PLACES ±0. -- ±. -- 3 PLACES ±0.13 ±. -- 2 PLACES ±0.13 ±. -- 1 PLACE ±0.25 ±. -- ANGULAR: ± 2°	SCALE 4 : 1 DESIGN UNITS <input checked="" type="checkbox"/> mm <input type="checkbox"/> INCH DRAWN BY & DATE LAURX 03/01/20 CHECKED BY & DATE MARTIN 03/01/20 APPROVED BY & DATE BIXLER 03/01/20	DIMENSIONS: <input type="checkbox"/> mm <input type="checkbox"/> INCH <input checked="" type="checkbox"/> mm ONLY SHT REV REVISE ON CAD ONLY	
	DESCRIPTION A	THIRD ANGLE PROJECTION	TITLE: HSD DAUGHTERCARD 6 ROW SIGNAL WAFER SALES DRAWING	MOLEX INCORPORATED	MATERIAL NO. DRAWING NO. SHEET NO. S7488102.DGN SEE CHART SD-74881-002 1 OF 1
	DRAFT WHERE APPLICABLE MUST REMAIN WITHIN DIMENSIONS	THIS DRAWING CONTAINS INFORMATION THAT IS PROPRIETARY TO MOLEX INCORPORATED AND SHOULD NOT BE USED WITHOUT WRITTEN PERMISSION.			SIZE C

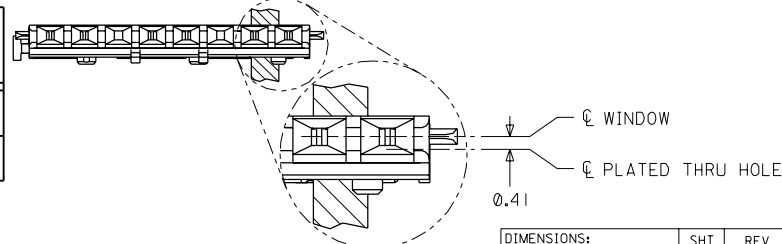
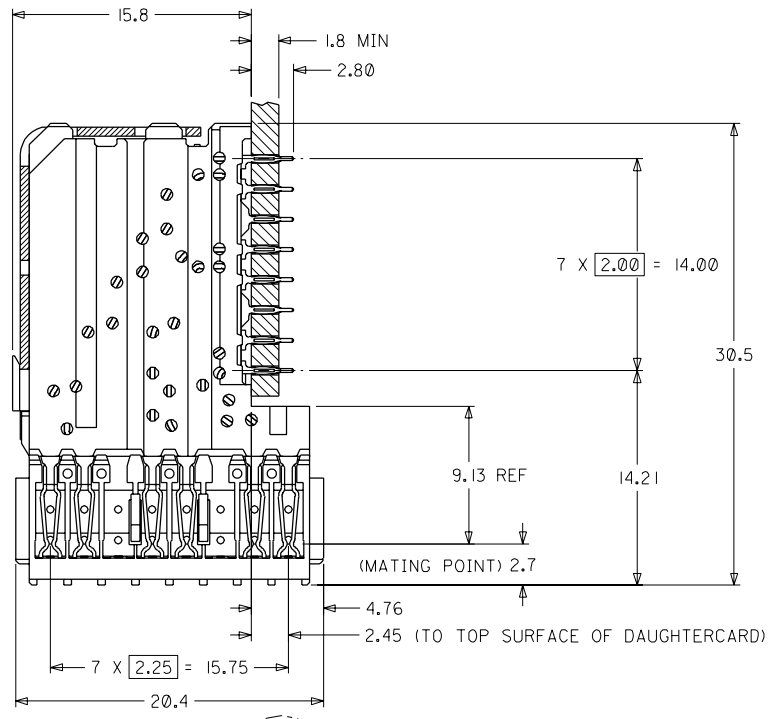
NOTES: (UNLESS OTHERWISE SPECIFIED)

1. MATERIALS: HOUSING - LIQUID CRYSTAL POLYMER (LCP), GLASS-FILLED, UL94V-0.
TERMINALS - HIGH PERFORMANCE COPPER ALLOY.
2. FINISH: SELECTIVE GOLD (Au) IN CONTACT AREA, SELECTIVE TIN/LEAD (Sn/Pb) ON PCB TAILS NICKEL (Ni) OVERALL.
3. REFER TO MOLEX PRODUCT SPECIFICATION PS-74031-999 FOR PERFORMANCE SPECIFICATIONS.
4. SIGNAL WAFERS SUPPLIED ON STAINLESS STEEL STIFFENER IN GROUPS OF 10 OR 25 ONLY.

MATERIAL NUMBER	MINIMUM GOLD PLATING	WAFER PLASTIC COLOR
74681-0001	0.00076mm (30uIN)	BLACK
74681-0051	0.00127mm (50uIN)	GRAY



NUMBER OF SIGNAL WAFERS	A	B	C
10	20.0	9	18.00
25	50.0	24	48.00

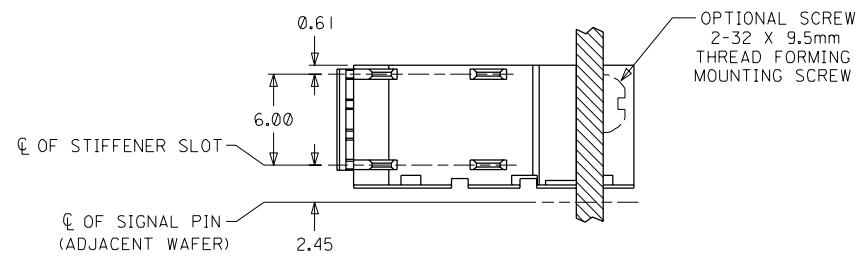


DAUGHTERCARD HOLE PATTERN (CONNECTOR SIDE)

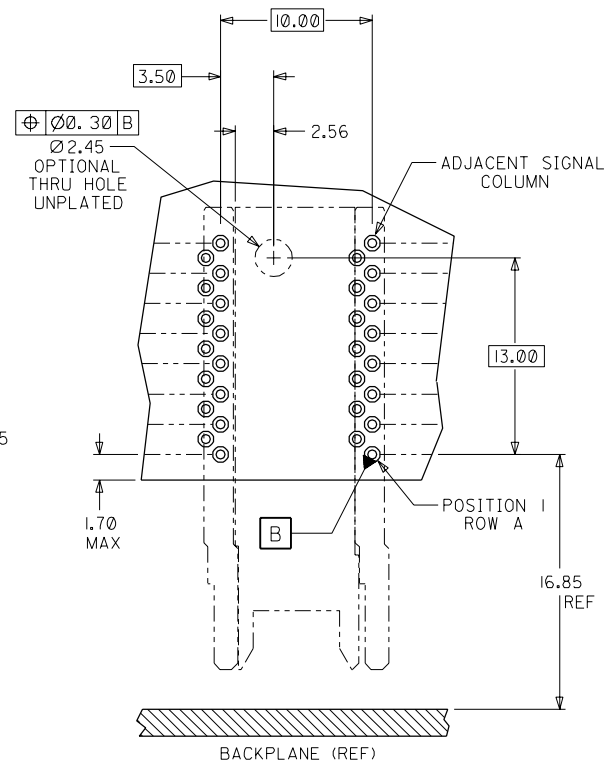
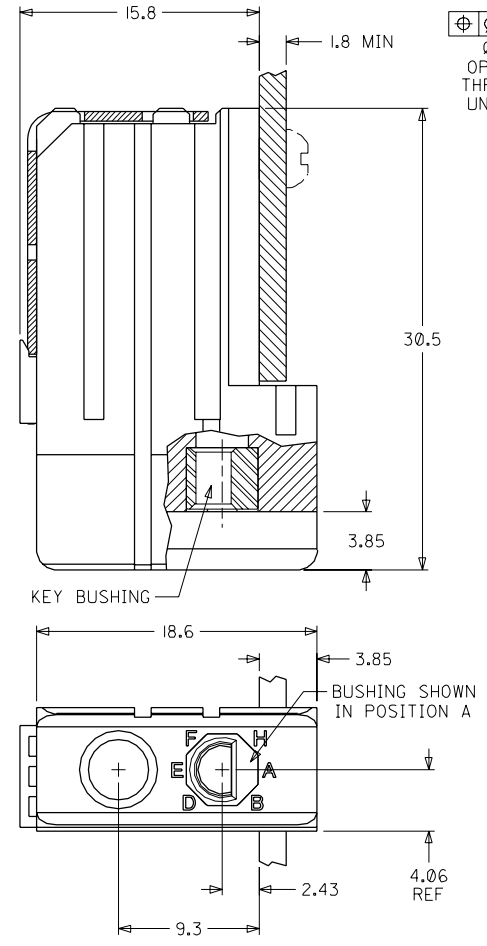
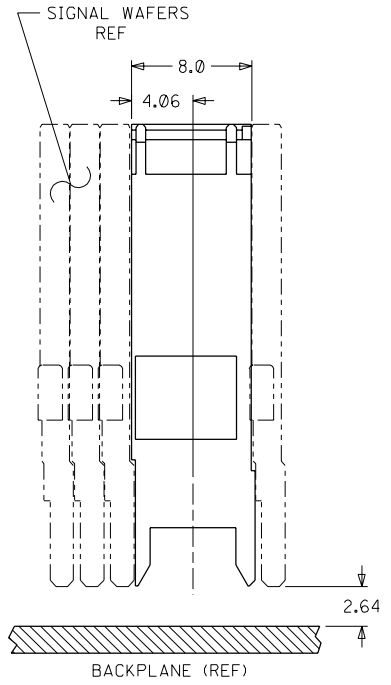
INITIAL RELEASE EC NO. UDT2001-1132 DRWN: LAURX 01/04/18 CHK: MARTIN 01/04/18 APPR: BIXLER 01/04/18	QUALITY SYMBOLS MAJOR = CRITICAL =	GENERAL TOLERANCES: (UNLESS SPECIFIED) mm INCH	SCALE 4 : 1 DESIGN UNITS <input checked="" type="checkbox"/> mm <input type="checkbox"/> INCH	DIMENSIONS: <input type="checkbox"/> mm <input type="checkbox"/> INCH <input checked="" type="checkbox"/> mm ONLY	SHT REV REVISE ON CAD ONLY
		DRAWN BY & DATE LAURX 01/04/18	CHECKED BY & DATE MARTIN 01/04/18	APPROVED BY & DATE BIXLER 01/04/18	TITLE: VHDM - HSD 8 ROW DAUGHTERCARD SIGNAL WAFER SALES DRAWING
DRAFT WHERE APPLICABLE MUST REMAIN WITHIN DIMENSIONS	CAD FILENAME S7468102.DGN	MATERIAL NO. SEE CHART	DRAWING NO. SD-74681-002	THIS DRAWING CONTAINS INFORMATION THAT IS PROPRIETARY TO MOLEX INCORPORATED AND SHOULD NOT BE USED WITHOUT WRITTEN PERMISSION.	

NOTES: (UNLESS OTHERWISE SPECIFIED)

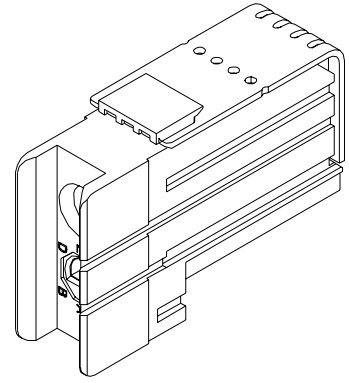
1. MATERIALS: HOUSING - LIQUID CRYSTAL POLYMER (LCP), GLASS-FILLED, UL94V-0, BLACK.
KEY BUSHING - STAINLESS STEEL.
2. FINISH: NONE.
3. REFER TO MOLEX PRODUCT SPECIFICATION PS-74031-999 FOR PERFORMANCE SPECIFICATIONS.



MATERIAL NUMBER	BUSHING CLOCK POSITION	
74037-0008	NONE	
74037-8001	A	
74037-8002	B	
74037-8003	C	
74037-8004	D	
74037-8005	E	
74037-8006	F	
74037-8007	G	
74037-8008	H	



DAUGHTERCARD HOLE PATTERN (CONNECTOR SIDE)

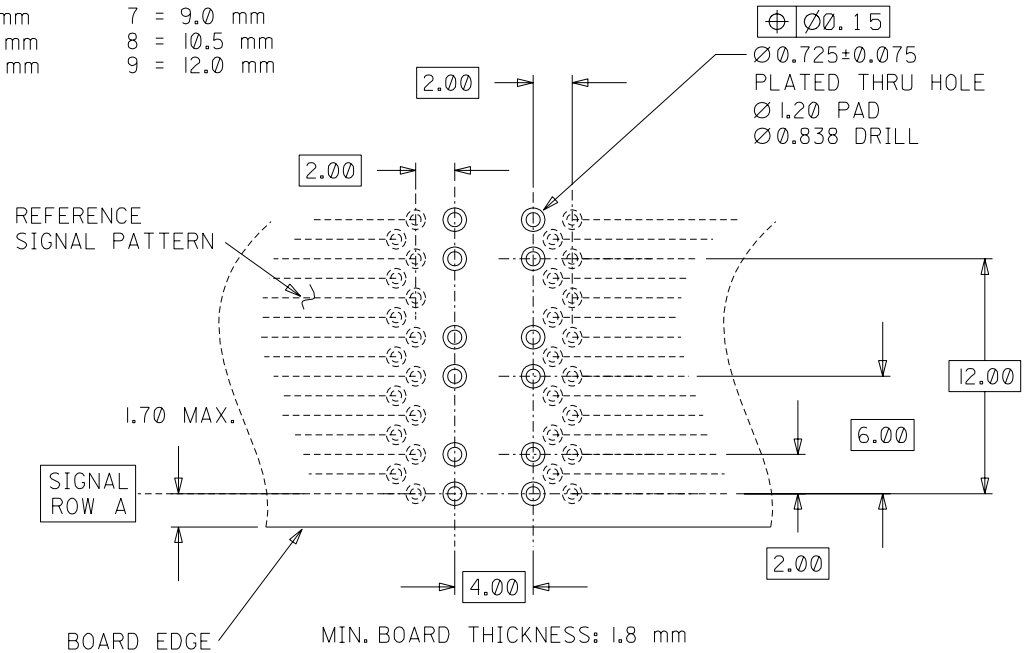
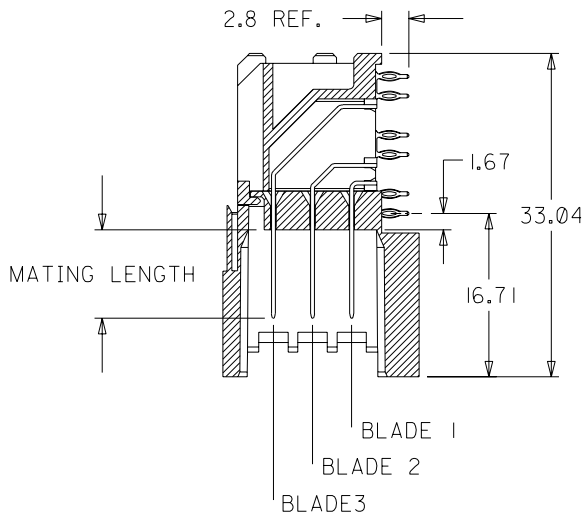
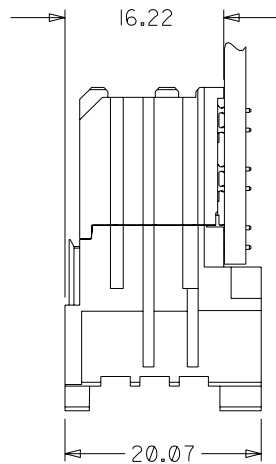
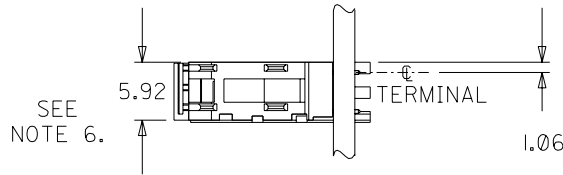
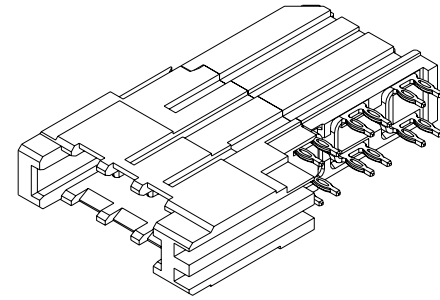


INITIAL RELEASE EC NO. UDT 1999-0291 DRWN: LAURX 98/10/19 CHK: MQWANG 98/10/19 APPR: BIXLER 98/10/19	QUALITY SYMBOLS MAJOR ∇ = 0 CRITICAL ∇ = 0	GENERAL TOLERANCES: (UNLESS SPECIFIED)		SCALE 4 : 1	DESIGN UNITS <input checked="" type="checkbox"/> mm <input type="checkbox"/> INCH	DIMENSIONS: <input type="checkbox"/> mm <input type="checkbox"/> INCH <input checked="" type="checkbox"/> mm ONLY		SHT	REV		
		4 PLACES ±0. -- ±. --	3 PLACES ±0. -- ±. --	2 PLACES ±0.13 ±. --	1 PLACE ±0.25 ±. --	ANGULAR: ± 2°	DRAWN BY & DATE LAURX 98/10/19		TITLE: VHDM DAUGHTERCARD 8 ROW GUIDE MODULE SALES DRAWING		
		CHECKED BY & DATE MQWANG 98/10/19		APPROVED BY & DATE BIXLER 98/10/19		CAD FILENAME S7403706.DGN		MATERIAL NO. SEE CHART		DRAWING NO. SD-74037-006	
		DRAFT WHERE APPLICABLE MUST REMAIN WITHIN DIMENSIONS		THIS DRAWING CONTAINS INFORMATION THAT IS PROPRIETARY TO MOLEX INCORPORATED AND SHOULD NOT BE USED WITHOUT WRITTEN PERMISSION.		MOLEX MOLEX INCORPORATED		SHEET NO. 1 OF 1		SIZE C	

MATERIAL NUMBER ASSIGNMENT

74026 - 8 * * * SEE NOTE 2. & 3.

BLADE 1 MATING LENGTH	BLADE 2 MATING LENGTH	BLADE 3 MATING LENGTH
1 = 7.5 mm	1 = 7.5 mm	1 = 7.5 mm
2 = 9.0 mm	2 = 9.0 mm	2 = 9.0 mm
3 = 10.5 mm	3 = 10.5 mm	3 = 10.5 mm
4 = 12.0 mm	4 = 12.0 mm	4 = 12.0 mm
5 = 9.75 mm	5 = 9.75 mm	5 = 9.75 mm
6 = 7.5 mm	6 = 7.5 mm	6 = 7.5 mm
7 = 9.0 mm	7 = 9.0 mm	7 = 9.0 mm
8 = 10.5 mm	8 = 10.5 mm	8 = 10.5 mm
9 = 12.0 mm	9 = 12.0 mm	9 = 12.0 mm

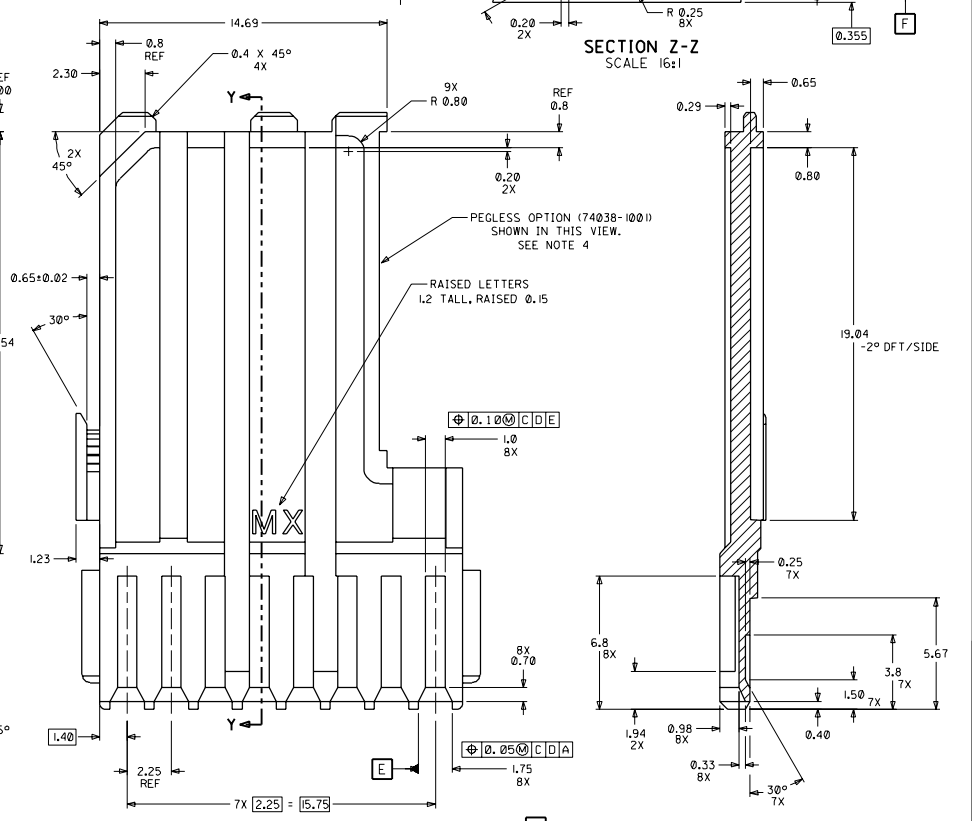
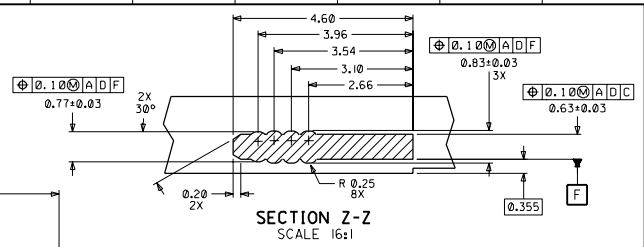
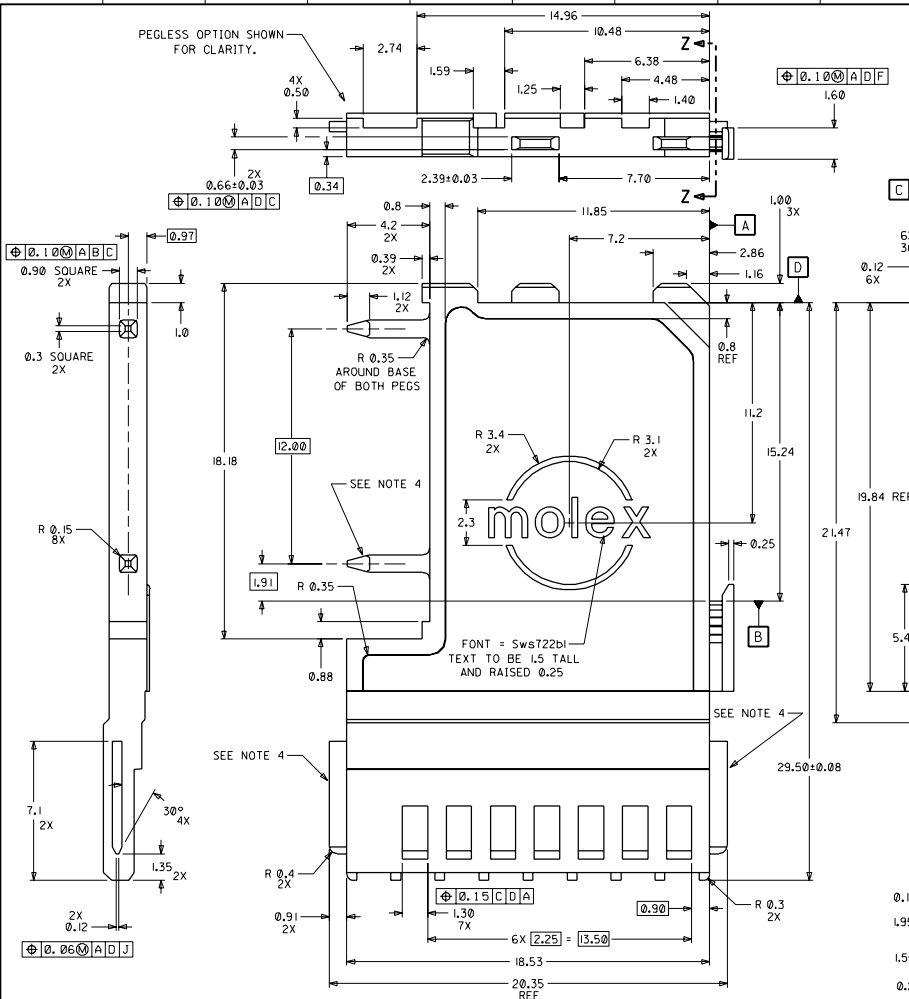


NOTES:

- MATERIALS:
HOUSING - LIQUID CRYSTAL POLYMER (LCP)
UL94 V-0 RATED, COLOR: BLACK
TERMINAL - COPPER ALLOY
- FINISH: SELECT GOLD ON MATING SURFACE, 30 microINCH THICK;
TIN/LEAD ON TAILS; NICKEL OVERALL. (WHEN * = 1, 2, 3, 4, OR 5).
- FINISH: SELECT GOLD ON MATING SURFACE, 50 microINCH THICK;
TIN/LEAD ON TAILS; NICKEL OVERALL. (WHEN * = 6, 7, 8, OR 9).
- THIS PART CONFORMS TO PRODUCT SPECIFICATION PS-74031-999.
- PART SHOWN IS 74026-8222.
- USE 6.00 mm NOMINAL FOR DAUGHTERCARD LAYOUT.

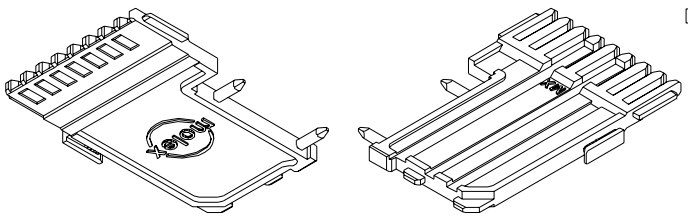
ADD 9.75 BLADE EC NO. UDT2002-1108 DRWN: ELO 02/03/12 CHK: ELO 02/03/13 APPR: BIXLER 02/03/14	QUALITY SYMBOLS MAJOR $\nabla = 0$ CRITICAL $\nabla C = 0$	GENERAL TOLERANCES: (UNLESS SPECIFIED)		SCALE NONE <input checked="" type="checkbox"/> mm <input type="checkbox"/> INCH	DESIGN UNITS <input checked="" type="checkbox"/> mm <input type="checkbox"/> INCH	THIRD ANGLE PROJECTION	DIMENSIONS: <input type="checkbox"/> mm <input type="checkbox"/> INCH <input checked="" type="checkbox"/> MM ONLY	SHT	REV
		mm	INCH	DRAWN BY & DATE ELO 98/10/15	TITLE: VHDM POWER 8 ROW DAUGHTERCARD SALES ASSEMBLY				
E	REV	4 PLACES ±0.	±.	CHECKED BY & DATE BREARLEY 98/10/21	APPROVED BY & DATE BIXLER 98/10/22	MOLEX INCORPORATED			
		3 PLACES ±0.	±.	CAD FILENAME SD-74026-002.S01	MATERIAL NO. SEE CHART	DRAWING NO. SD-74026-002	SHEET NO. 1 OF 1		
		ANGULAR: ± 5 °		DRAFT WHERE APPLICABLE MUST REMAIN WITHIN DIMENSIONS		THIS DRAWING CONTAINS INFORMATION THAT IS PROPRIETARY TO MOLEX INCORPORATED AND SHOULD NOT BE USED WITHOUT WRITTEN PERMISSION.			
						SIZE B			

MATERIAL NUMBER	PEG STATUS	RIB STATUS
74038-1001	WITHOUT PEGS	WITH RIBS
74038-1002	WITH PEGS	WITH RIBS
74038-1008	WITHOUT PEGS	WITHOUT RIBS



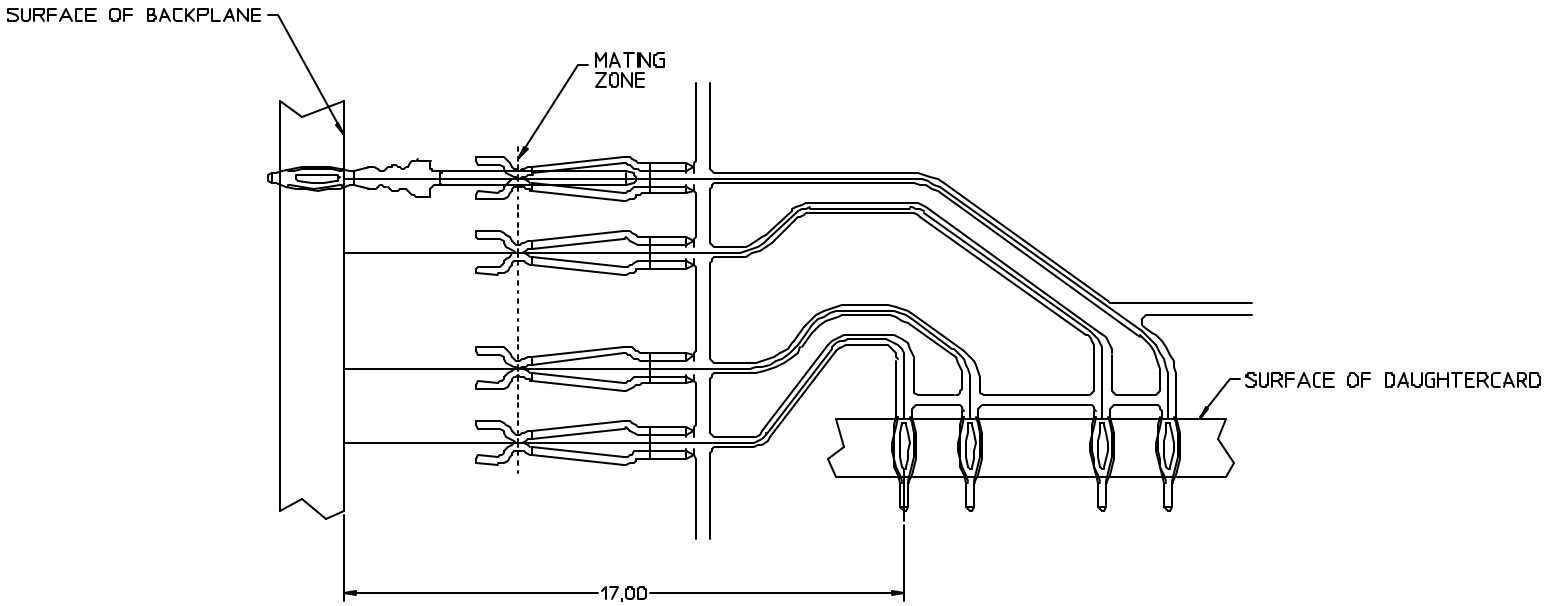
NOTES: (UNLESS OTHERWISE SPECIFIED)

- MATERIAL: VECTRA L130 (LCP), COLOR: BLACK (D2) PER MOLEX MATERIAL NUMBER 89992-0057.
- 0.10 MAXIMUM ALLOWABLE FLASH.
- GATE TO BE SUFFICIENTLY RECESSED SO THAT VESTIGE WILL NOT EXCEED PART SURFACE.
- PART MAY BE PRODUCED WITH OR WITHOUT PEGS AND WITH OR WITHOUT ALIGNMENT RIBS. SEE CHART FOR APPROPRIATE MATERIAL NUMBERS.



REVISED PER EC No. JDT2002-06592 DRWN LAURX 01/08/09 CHKS MARTIN 01/08/09 APPR. BIXLER 01/08/09	QUALITY SYMBOLS MAJOR CRITICAL MINOR	GENERAL TOLERANCES UNLESS SPECIFIED: mm INCH 4 PLACES ±0. -- ±. -- 3 PLACES ±0. -- ±. -- 2 PLACES ±0.05 ±. -- 1 PLACE ±0.13 ±. -- ANGULAR ± 2°	SCALE 8 : 1 DESIGN UNITS mm INCH THIRD ANGLE PROJECTION	DIMENSIONS: mm INCH mm ONLY mm ONLY	SHT REV		
		DRAWN BY & DATE LAURX 98/11/09	CHECKED BY & DATE MOWANG 98/11/10	APPROVED BY & DATE BIXLER 98/11/10	TITLE: VHDM 8 ROW DAUGHTERCARD END CAP	MATERIAL NO. SEE CHART	SHEET NO. 1 OF 1
		CAD FILENAME E7403802.DGN	DRAWING NO. E-74038-002	THIS DRAWING CONTAINS INFORMATION THAT IS PROPRIETARY TO MOLEX INCORPORATED AND SHOULD NOT BE USED WITHOUT WRITTEN PERMISSION.	MOLEX INCORPORATED	SIZE D	
		DRAFT WHERE APPLICABLE MUST REMAIN WITHIN DIMENSIONS					

HSD 5 ROW PATHLENGTHS



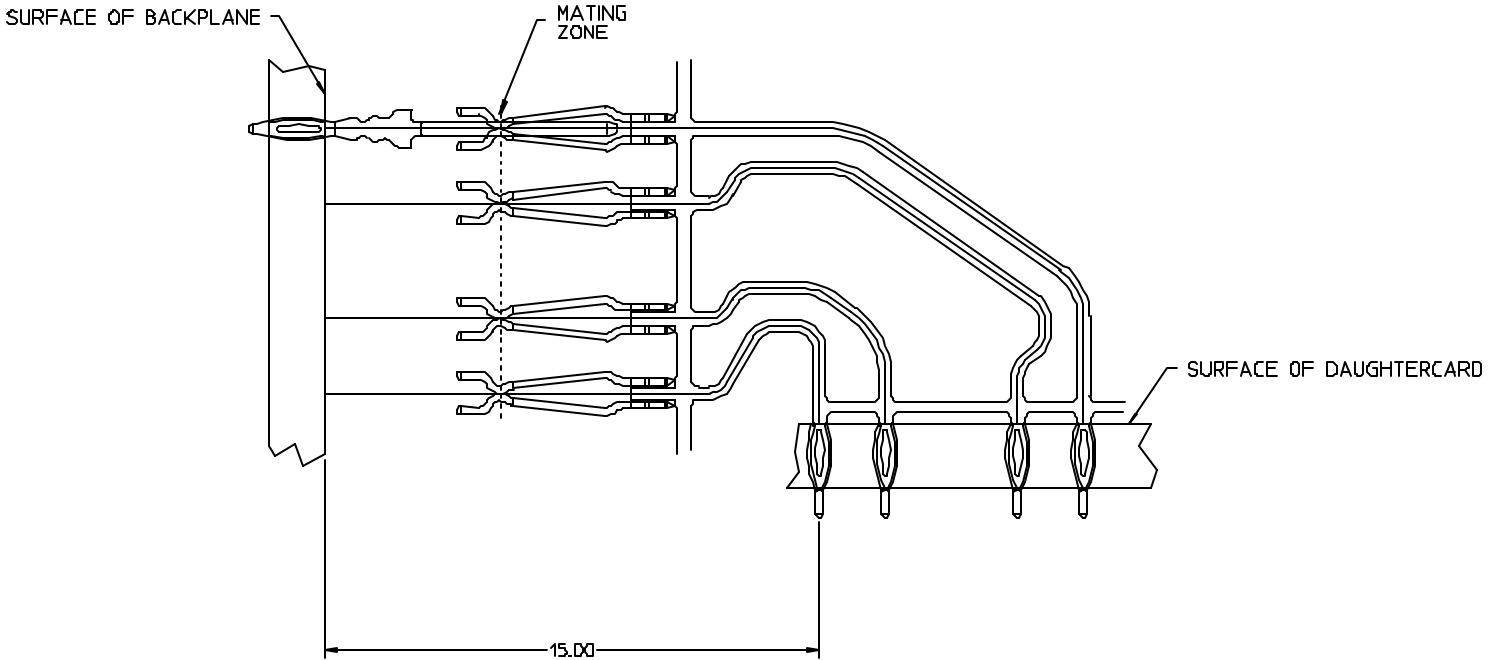
{FROM SURFACE OF DAUGHTERCARD TO SURFACE OF BACKPLANE}

{FROM SURFACE OF DAUGHTERCARD TO MATING ZONE}

ROW A: 20.56 mm
 ROW B: 21.73 mm
 ROW D: 27.00 mm
 ROW E: 28.54 mm

ROW A: 15.24 mm
 ROW B: 16.41 mm
 ROW D: 21.68 mm
 ROW E: 23.22 mm

HSD 6 ROW PATHLENGTHS



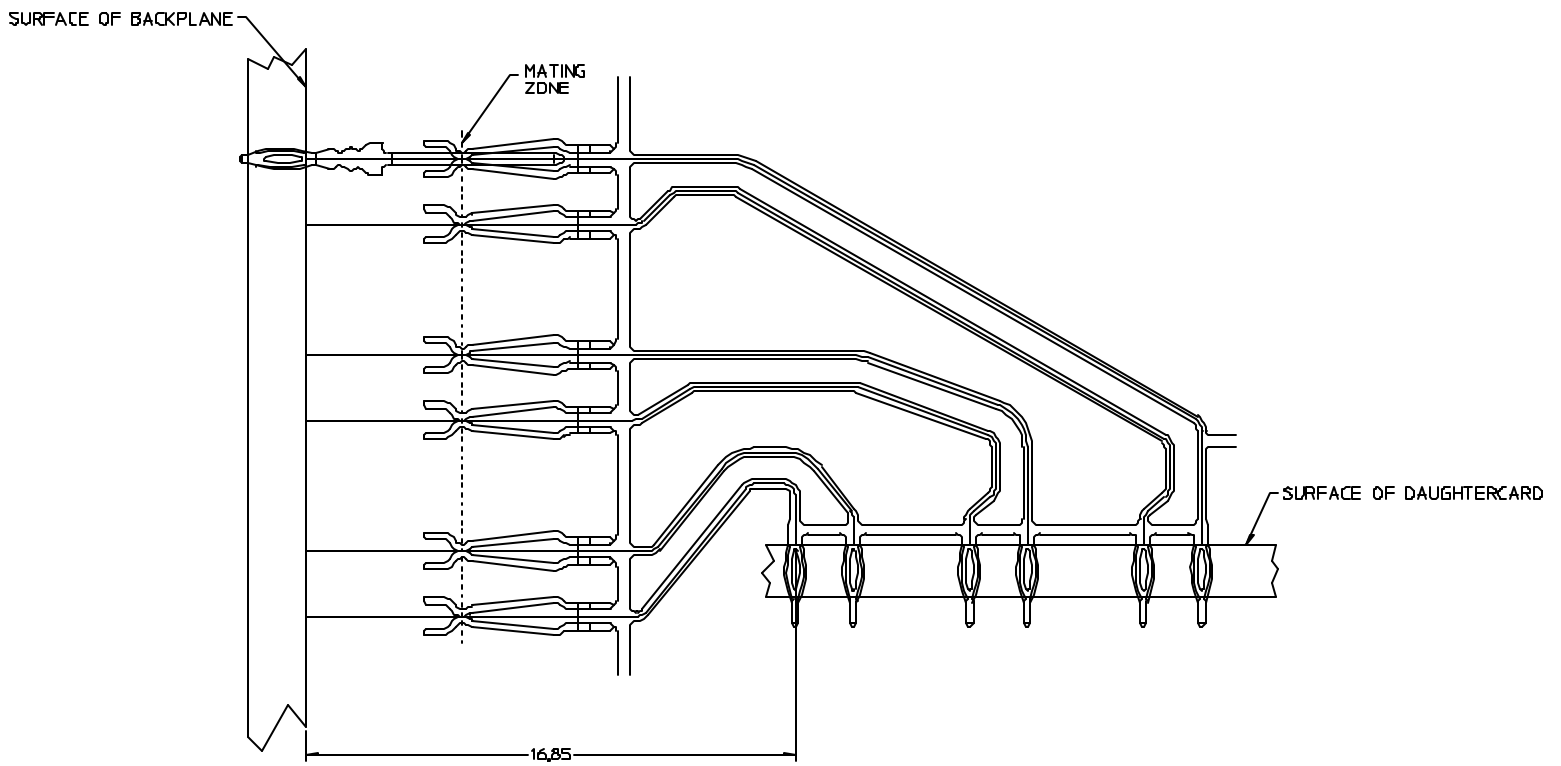
{FROM SURFACE OF DAUGHTERCARD TO SURFACE OF BACKPLANE}

{FROM SURFACE OF DAUGHTERCARD TO MATING ZONE}

ROW A: 18.70 mm
 ROW B: 20.32 mm
 ROW D: 27.38 mm
 ROW E: 28.48 mm

ROW A: 13.38 mm
 ROW B: 15.00 mm
 ROW D: 22.06 mm
 ROW E: 23.16 mm

HSD 8 ROW PATHLENGTHS



(FROM SURFACE OF DAUGHTERCARD TO SURFACE OF BACKPLANE)

ROW A: 20.88 mm
 ROW B: 22.33 mm
 ROW C: 28.32 mm
 ROW E: 29.36 mm
 ROW G: 36.35 mm
 ROW H: 37.38 mm

(FROM SURFACE OF DAUGHTERCARD TO MATING ZONE)

ROW A: 15.56 mm
 ROW B: 17.01 mm
 ROW D: 23.00 mm
 ROW E: 24.04 mm
 ROW G: 31.03 mm
 ROW H: 32.06 mm