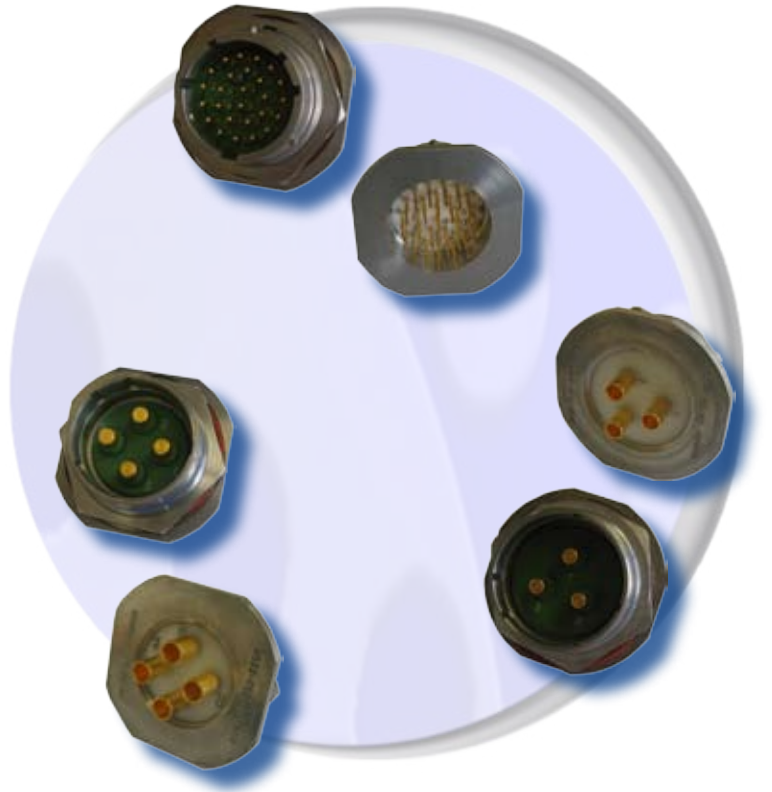


# 8533 Hermetic Connectors



## Description

- Glass sealed hermetic:
  - high hermeticity performance,
  - compact low profile,
- Robust screw couplig according to EN2997 and ESC10 standards
- Signal and power solder cup contacts,
- PCB contact version available,
- Special fuel tank versions.



## Application

All purposes in severe climatical environments and high temperature, Civil and military aircrafts, engine area, Pressure and temperature sensors.

## Technical features

### Mechanical

- **Shell:** Stainless steel
- **Plating:** Passivated
- **Seal:** Silicone
- **Contact:** Ferrous alloy
- **Shock:** 300g during 3ms
- **Endurance:** 500 mating / unmating operations

### Resistance to fluids:

MIL-H 5606  
SKYDROL 500 B4  
LD4 -JP5  
MIL-L 7870A  
MIL-L 23699  
MIL-L 7808  
MIL-C 25769  
MIL-A 8243

### Electrical

- **Contact resistance:** EN 2997
- **Max current rating per contact:**

Size	A
20	5
16	10
12	17
6 (power)	46

- **Dielectric withstanding:**

Altitude	Service I
Sea level	1500 Vrms
15 000 m	600 Vrms
21 000 m	400 Vrms
33 000 m	200 Vrms

### Environmental

- **Working temperature:**  
Class Y : -65°C to 200°C  
Class YE : -65°C to 260°C cyclic
- **Hermeticity:**  $10^{-7}$  atm.cm<sup>3</sup>/s (helium gaz test)
- **Leakage:** Low pressure immersion L54001 and Interfacial sealing: pressure 2 KPa.
- **Damp heat:** As per EN 2997 and NFL 54143: 10 cycles of 24 h.
- **Salt spray:** 48 hours.

# 8533 Hermetic Connectors



## Ordering information

<b>Basic series</b>	8533	1	y	10	05	P	N	●
<b>Shell type</b>								
1: solder fixing receptacle								
2: square flange receptacle								
7: jam nut receptacle								
<b>Class</b>								
y: 200°C								
YE: 260°C								
<b>Shell size</b>	08 – 10 – 12 – 14 – 16 – 18 – 20 – 22 – 24							
<b>Contact layout</b>	see page 2 & 3							
<b>Contact type</b>								
P: pin								
<b>Orientation</b>								
N – 6 – 7 – 8 – 9 – y								
<b>Specification</b>								
None: standard hermetic version								
022: hermetic fuel tank version (solder cup)								

# 8533 Hermetic Connectors



Layouts					
Shell size <b>08</b>	<b>03</b>  3#20 ●■	<b>98</b>  3#20 ●■	<b>10</b>	<b>05</b>  5#20 ●■	<b>06</b>  6#20 *■
<b>12</b>	<b>03</b>  3#16 ●■	<b>12</b>  12#20 ●■			
<b>14</b>	<b>04</b>  4#12 ●■	<b>07</b>  7#16 ●■	<b>15</b>  15#20 ●■		
<b>16</b>	<b>10</b>  10#16 ●■	<b>24</b>  24#20 ●■	● class 200°C ■ class 260°C *: Please, consult us.		
<b>18</b>	<b>14</b>  14#16 ●■	<b>31</b>  31#20 ●■			
<b>20</b>	<b>04</b>  4#6 ●■*	<b>39</b>  37#20 2#16 ●■*	<b>41</b>  41#20 ●■*		
<b>22</b>	<b>12</b>  12#12 ●■*	<b>55</b>  55#20 ●■			
<b>24</b>	<b>03</b>  3#6 ●■*	<b>21</b>  61#20 ●■*			

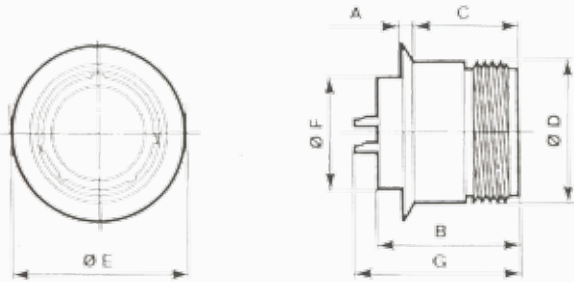
# 8533 Hermetic Connectors



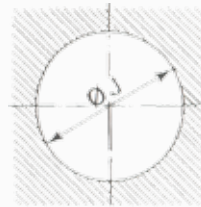
## Dimensions

### Hermetic receptacle type 1Y & 1YE

Receptacle



Panel cut out

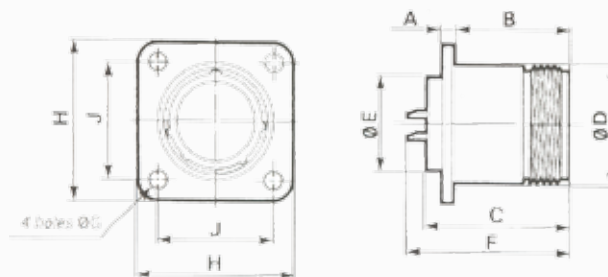


Shell size	A Max	B Max	C Max	D Max	E Max	F Max	G Max	Ø J Max
08	1.45	22.05	18.45	14.29	18.12	12.70	26.50	12.96
10	1.45	22.05	18.45	17.46	21.52	14.25	26.50	14.53
12	1.45	22.05	18.45	22.22	26.57	19.05	26.50	19.30
14	1.45	22.05	18.45	23.81	27.82	20.60	26.50	20.88
16	1.45	22.05	18.45	26.99	30.92	23.79	26.50	24.05
18	1.45	22.05	18.45	30.16	34.22	26.95	26.50	27.23
20	1.45	22.05	18.45	33.34	37.22	30.12	26.50	30.40
22	1.45	22.05	18.45	36.51	40.62	33.30	26.50	23.58
24	1.45	22.05	18.45	39.69	43.62	36.47	26.50	36.70

Dimensions in mm.

### Hermetic receptacle type 2Y & 2YE

Receptacle



Shell size	A Max	B Max	C Max	D Max	E Max	F Max	G Max	H Max	J Max
08	1.45	18.35	22.05	14.29	12.70	26.50	3.00	20.75	15.09
10	1.45	18.35	22.05	17.46	14.25	26.50	3.00	23.95	18.26
12	1.45	18.35	22.05	22.22	19.05	26.50	3.00	26.31	20.62
14	1.45	18.35	22.05	23.81	20.60	26.50	3.00	28.69	23.01
16	1.45	18.35	22.05	26.99	23.79	26.50	3.00	31.88	24.61
18	1.45	18.35	22.05	30.16	26.95	26.50	3.00	34.24	26.97
20	1.45	18.35	22.05	33.34	30.12	26.50	3.00	36.63	29.36
22	1.45	18.35	22.05	36.51	33.30	26.50	3.00	39.80	31.75
24	1.45	18.35	22.05	39.69	36.47	26.50	3.00	43.38	34.92

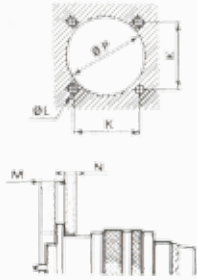
Dimensions in mm.

# 8533 Hermetic Connectors



## Hermetic receptacle type 2Y & 2YE

Panel cut out



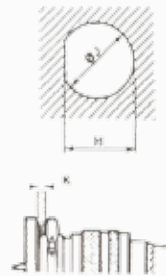
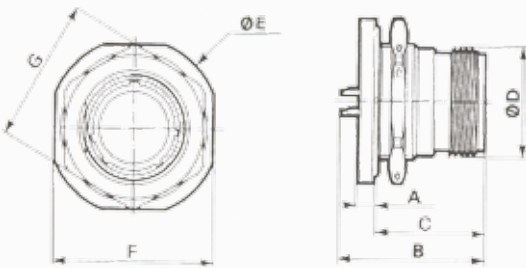
Shell size	K	L+0.10	M	N Max	P Min
08	15.09	3.20	3.18	3.18	17.50
10	18.26	3.20	3.18	3.18	18.90
12	20.62	3.20	3.18	3.18	23.50
14	23.01	3.20	3.18	3.18	25.10
16	24.61	3.20	3.18	3.18	28.30
18	26.97	3.20	3.18	3.18	31.40
20	29.36	3.20	3.18	3.18	34.60
22	31.75	3.20	3.18	3.18	37.80
24	34.92	3.20	3.18	3.18	40.90

Dimensions in mm.

## Hermetic receptacle type 7Y & 7YE

Receptacle

Panel cut out



Shell size	A Max	B Max	C Max	D Max	E Max	F Max	G Max	H <sub>0</sub> <sup>+0.26</sup>	J <sub>0</sub> <sup>+0.26</sup>	K Max
08	2.60	26.50	19.52	14.29	27.35	24.85	20.12	15.24	16.00	3.17
10	2.60	26.50	19.52	17.46	30.24	28.00	24.20	18.41	19.17	3.17
12	2.60	26.50	19.52	22.22	35.01	32.75	28.95	23.16	23.92	3.17
14	2.60	26.50	19.52	23.81	38.46	35.29	30.30	24.76	25.52	3.17
16	2.60	26.50	19.52	26.99	41.64	38.46	33.45	27.94	28.70	3.17
18	2.60	26.50	19.52	30.16	44.81	41.64	34.64	30.99	31.87	3.17
20	3.35	26.50	19.52	33.34	49.60	44.86	39.80	34.16	35.05	3.17
22	3.35	26.50	19.52	36.51	52.74	49.59	43.00	37.33	38.22	3.17
24	3.35	26.50	19.52	39.69	55.40	52.81	46.15	40.51	41.40	3.17

Dimensions in mm.