

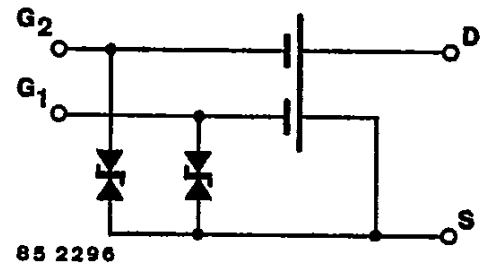
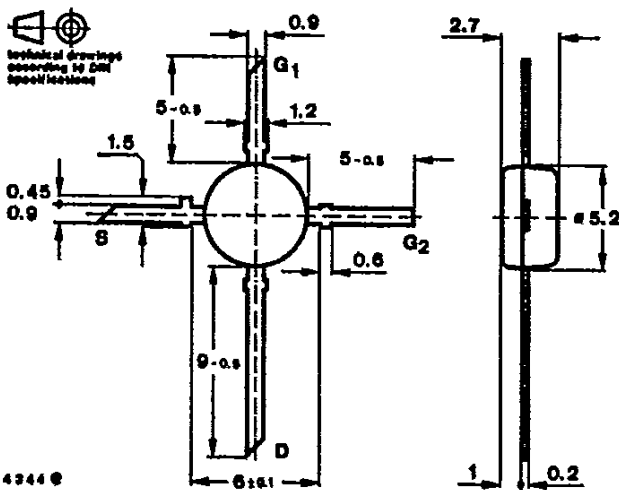
N-Channel Dual Gate MOS-Fieldeffect Tetrode · Depletion Mode

Applications: Input- and Mixerstages especially for UHF-tuners

Features:

- Integrated Gate protection diodes
- High cross modulation performance
- Low noise figure
- High AGC-range
- Low feedback capacitance
- Low input capacitance

Dimensions in mm



Case
 50 B 4 DIN 41 867
 JEDEC TO 50
 Weight max. 0.1 g

Absolute maximum ratings

Drain Source Voltage	V_{DS}	20	V
Drain current	I_D	30	mA
Gate 1/Gate 2-Source peak current	$\pm I_{G1/2SM}$	10	mA
Total power dissipation $T_{amb} = 60^\circ C$	P_{tot}	200	mW
Channel temperature	T_C	150	$^\circ C$
Storage temperature range	T_{stg}	-55 ... +150	$^\circ C$

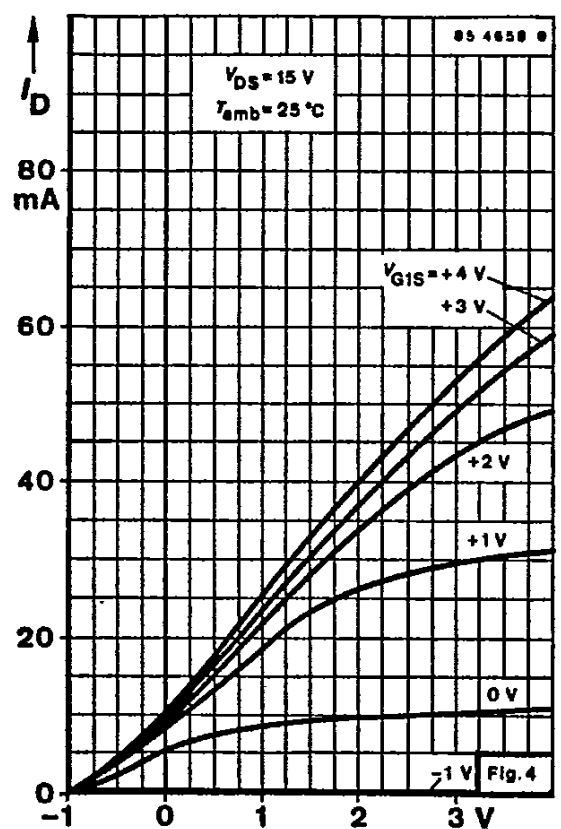
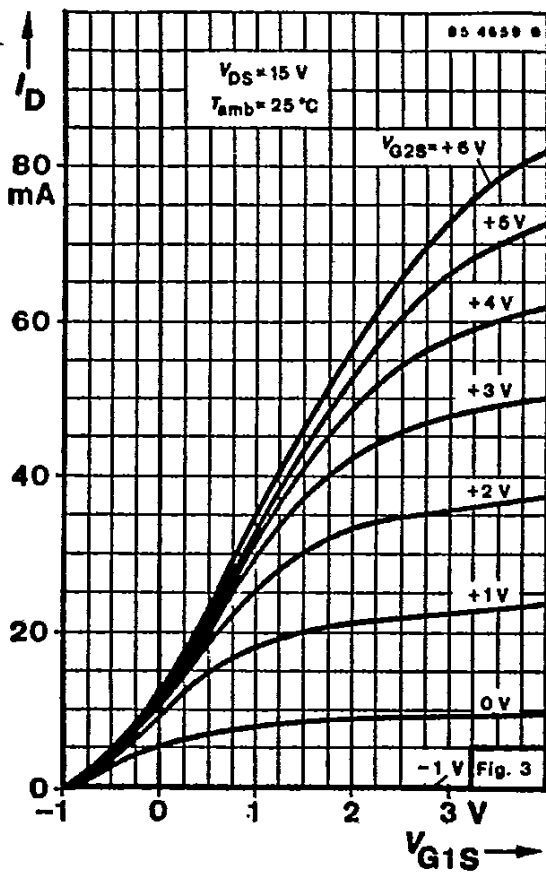
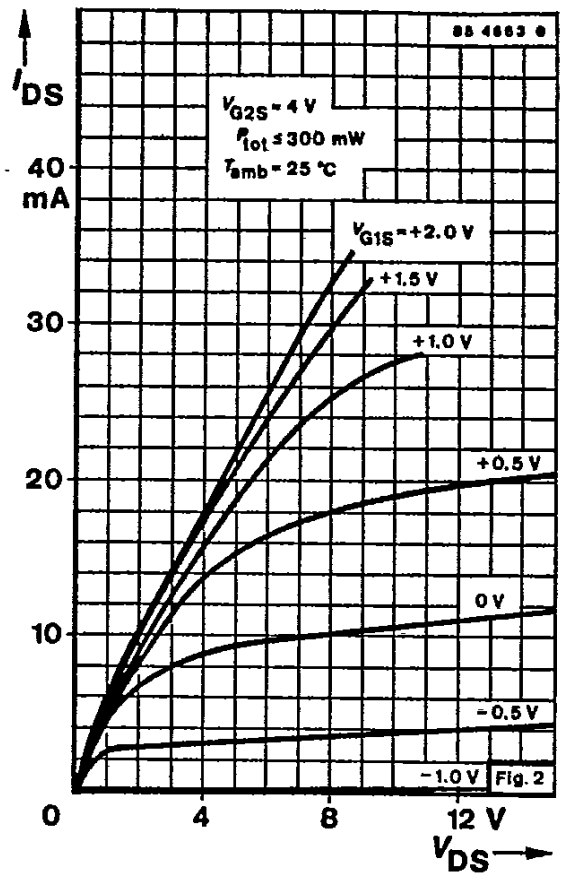
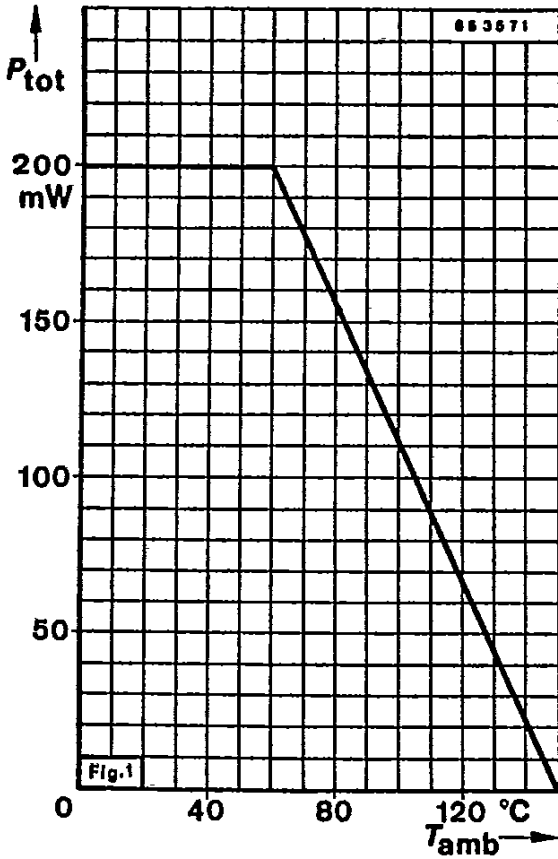
Thermal resistance

	Min.	Typ.	Max.
Channel ambient mounted on pc-board one side Cu 35 μm thickness 40 x 25 x 1.5 mm ³			450 K/W
		R_{thCA}	

BF 966

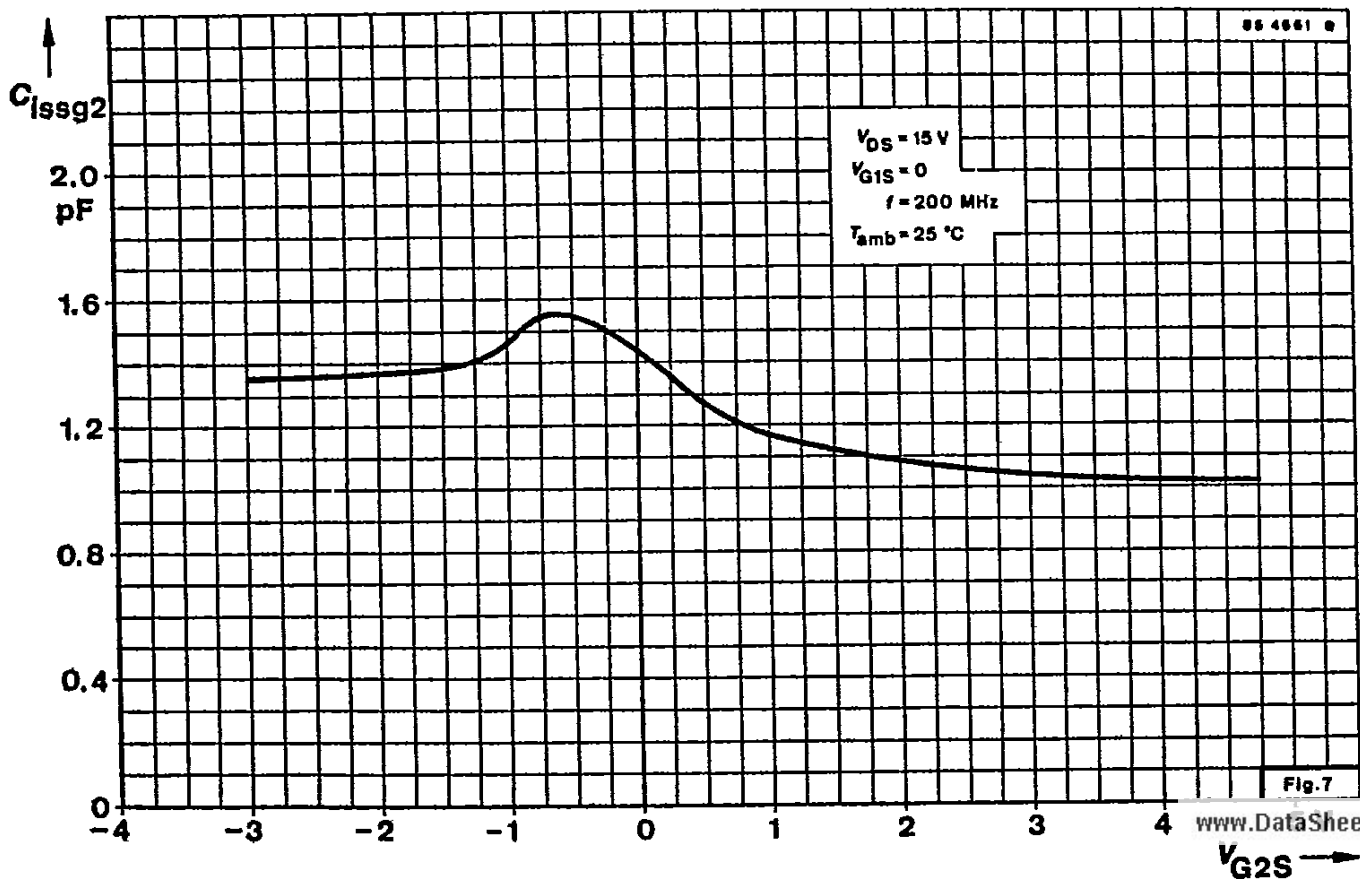
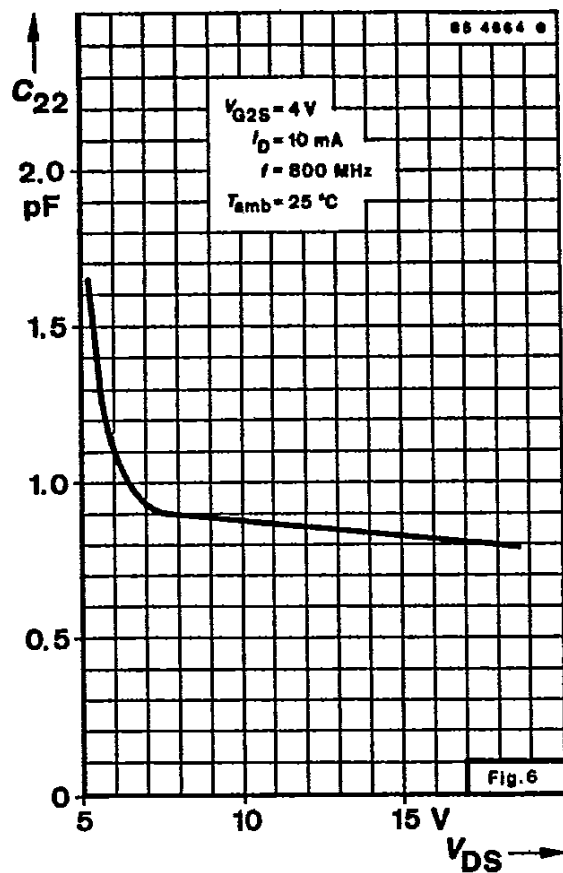
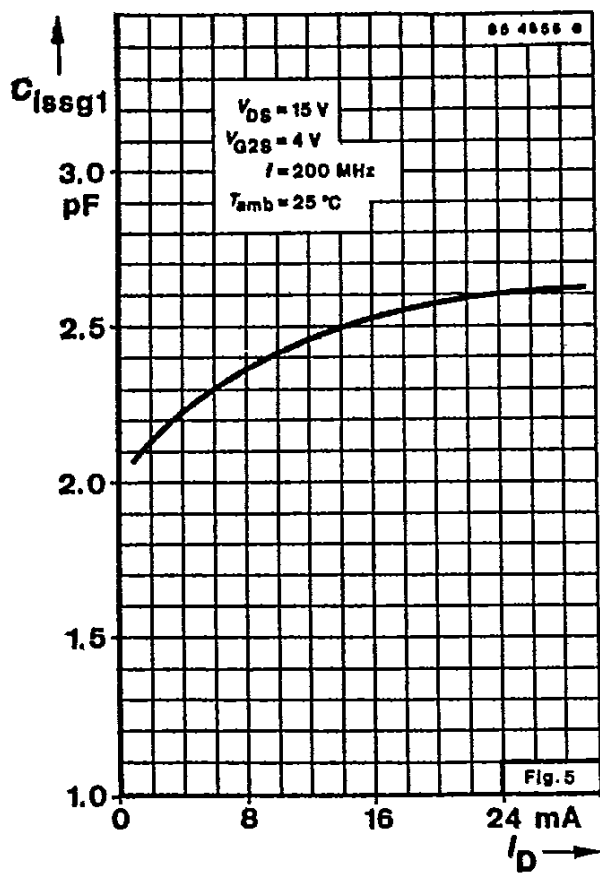
www.DataSheet4U.com

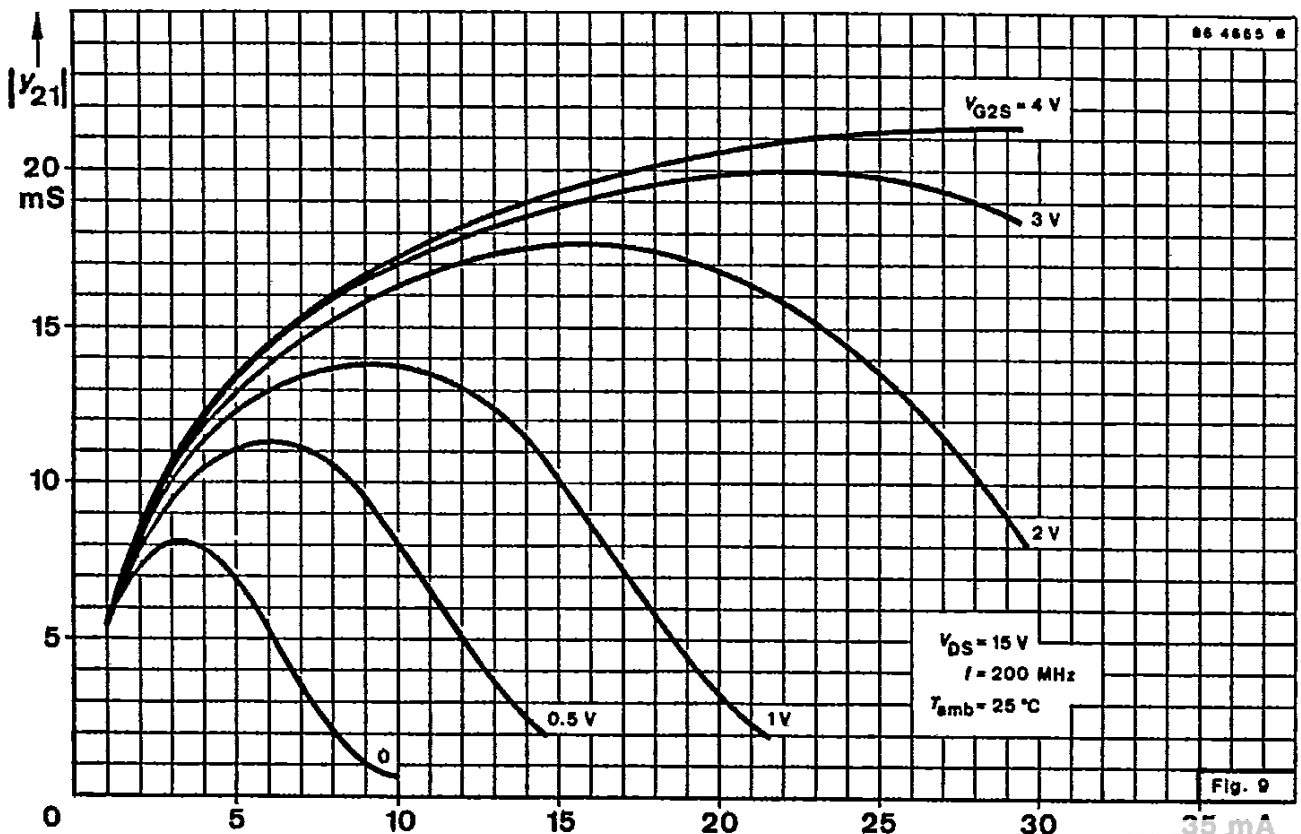
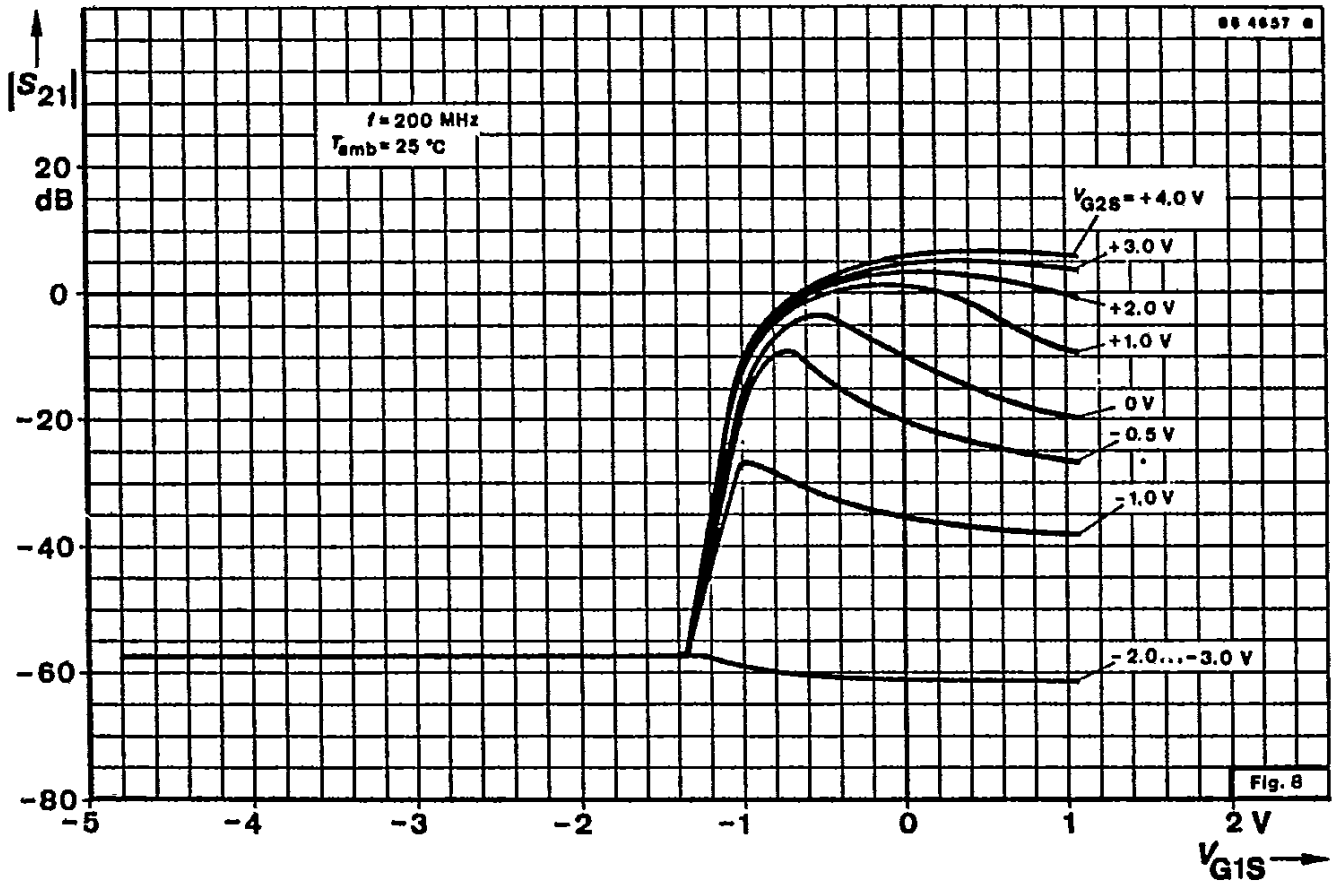
DC characteristics		Min.	Typ.	Max.
$T_{amb} = 25\text{ }^{\circ}\text{C}$, unless otherwise specified				
Drain-source breakdown voltage $I_D = 10\text{ }\mu\text{A}$, $-V_{G1S} = -V_{G2S} = 4\text{ V}$	$V_{(BR)DS}$	20		V
Gate 1-Source breakdown voltage $\pm I_{G1S} = 10\text{ mA}$, $V_{G2S} = V_{DS} = 0$	$\pm V_{(BR)G1SS}$	6	20	V
Gate 2-Source breakdown voltage $\pm I_{G2S} = 10\text{ mA}$, $V_{G1S} = V_{DS} = 0$	$\pm V_{(BR)G2SS}$	6	20	V
Gate 1-Source cut-off current $\pm V_{G1S} = 5\text{ V}$, $V_{G2S} = V_{DS} = 0$	I_{G1SS}		50	nA
Gate 2-Source cut-off current $\pm V_{G2S} = 5\text{ V}$, $V_{G1S} = V_{DS} = 0$	I_{G2SS}		50	nA
Drain current $V_{DS} = 15\text{ V}$, $V_{G1S} = 0$, $V_{G2S} = 4\text{ V}$	I_{DSS}	2	20	mA
Gate 1-Source cut-off voltage $V_{DS} = 15\text{ V}$, $V_{G2S} = 4\text{ V}$, $I_D = 20\text{ }\mu\text{A}$	$-V_{G1S(OFF)}$		2.5	V
Gate 2-Source cut-off voltage $V_{DS} = 15\text{ V}$, $V_{G1S} = 0\text{ V}$, $I_D = 20\text{ }\mu\text{A}$	$-V_{G2S(OFF)}$		2.0	V
AC characteristics				
$V_{DS} = 15\text{ V}$, $I_D = 10\text{ mA}$, $V_{G2S} = 4\text{ V}$, $f = 1\text{ MHz}$, $T_{amb} = 25\text{ }^{\circ}\text{C}$, unless otherwise specified				
Forward transadmittance	$ y_{21} $	15	17	mS
Gate 1-Input capacitance	C_{ISSg1}		2.2	pF
Gate 2-Input capacitance $V_{G1S} = 0$, $V_{G2S} = 4\text{ V}$	C_{ISSg2}		1.1	pF
Feedback capacitance	$C_{rSS}^{1)}$		25	fF
Output capacitance	C_{OSS}		0.8	pF
Power gain				
$V_{DS} = 15\text{ V}$, $I_D = 10\text{ mA}$, $V_{G2S} = 4\text{ V}$, $g_G = 2\text{ mS}$, $g_L = 0.5\text{ mS}$, $f = 200\text{ MHz}$	G_{ps}		25	dB
$g_G = 3.3\text{ mS}$, $g_L = 1\text{ mS}$, $f = 800\text{ MHz}$	G_{ps}		18	dB
Noise figure				
$V_{DS} = 15\text{ V}$, $I_D = 10\text{ mA}$, $V_{G2S} = 4\text{ V}$, $g_G = 2\text{ mS}$, $f = 200\text{ MHz}$	F		1.0	dB
$f = 800\text{ MHz}$	F		1.8	dB



BF 966

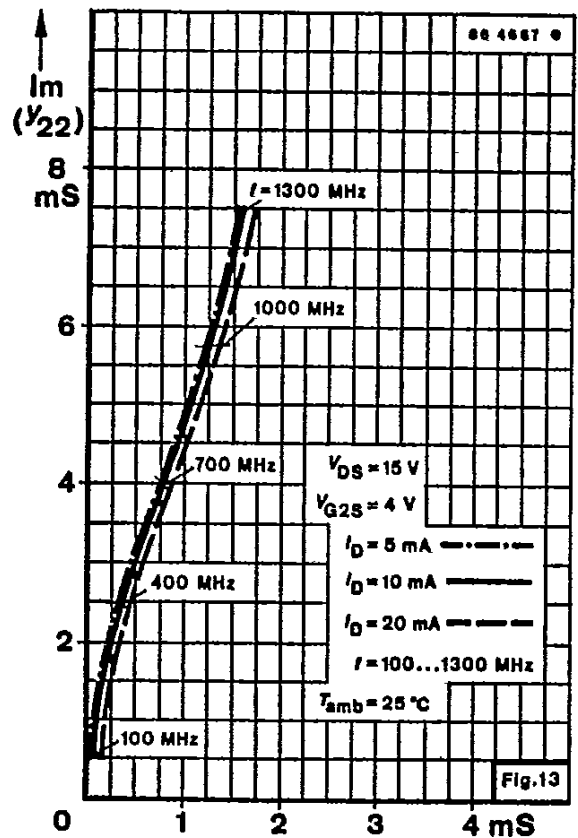
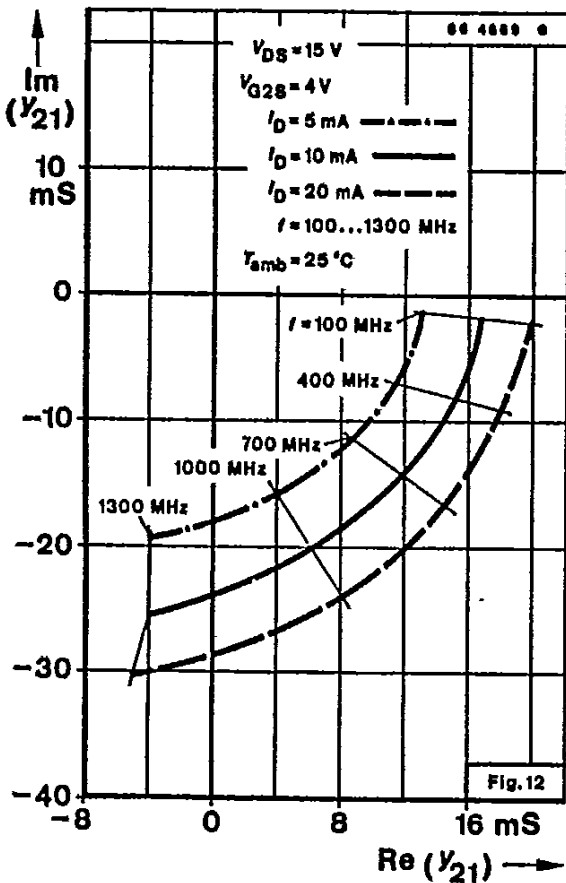
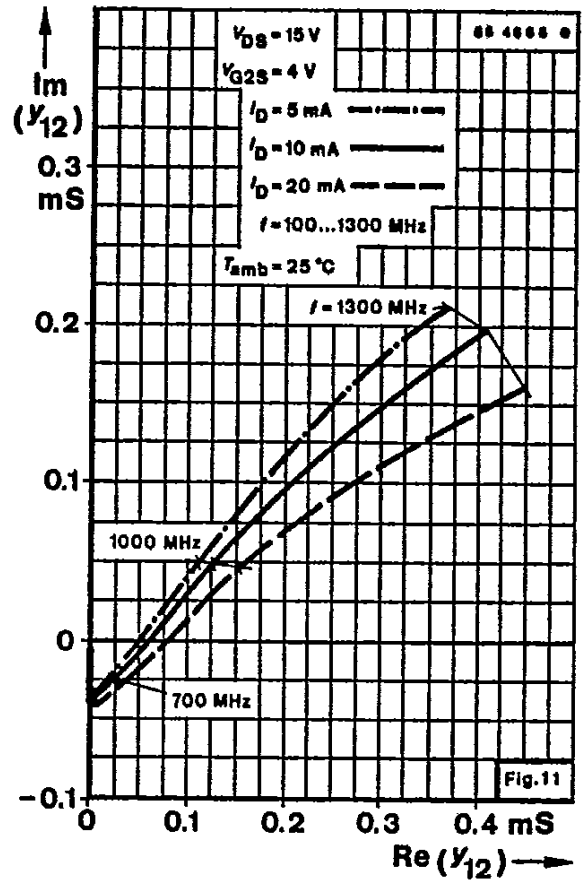
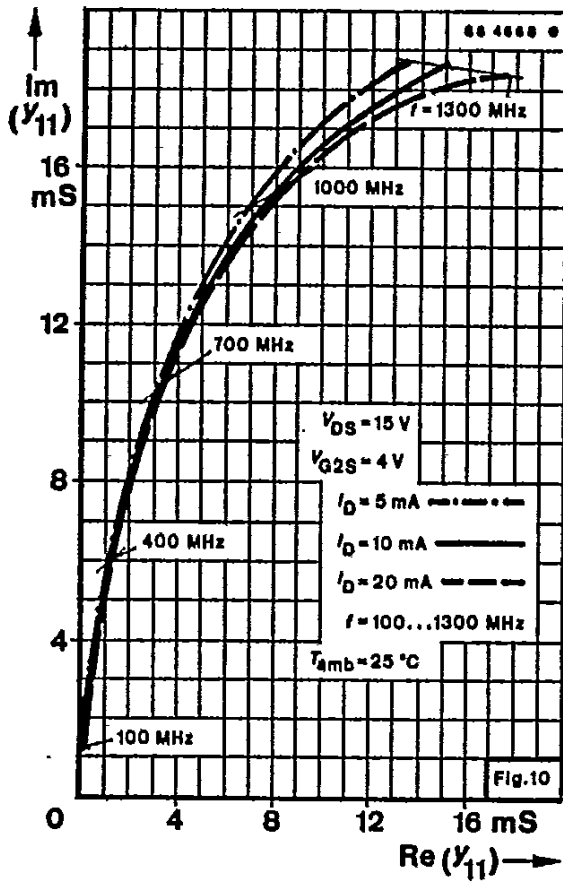
www.DataSheet4U.com

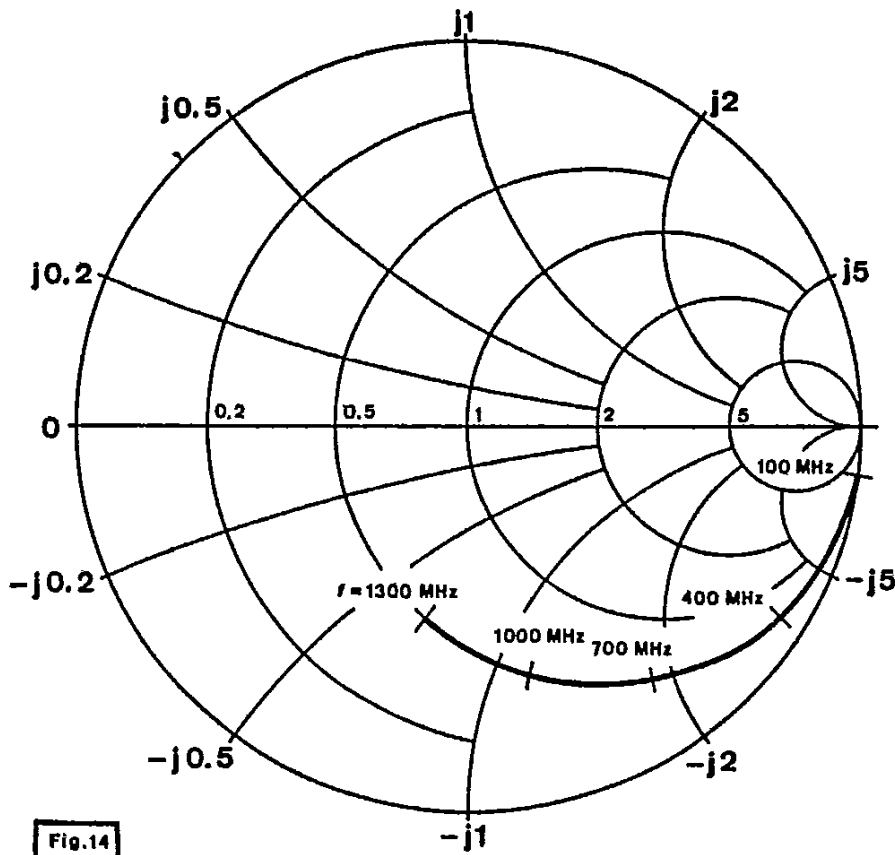




BF 966

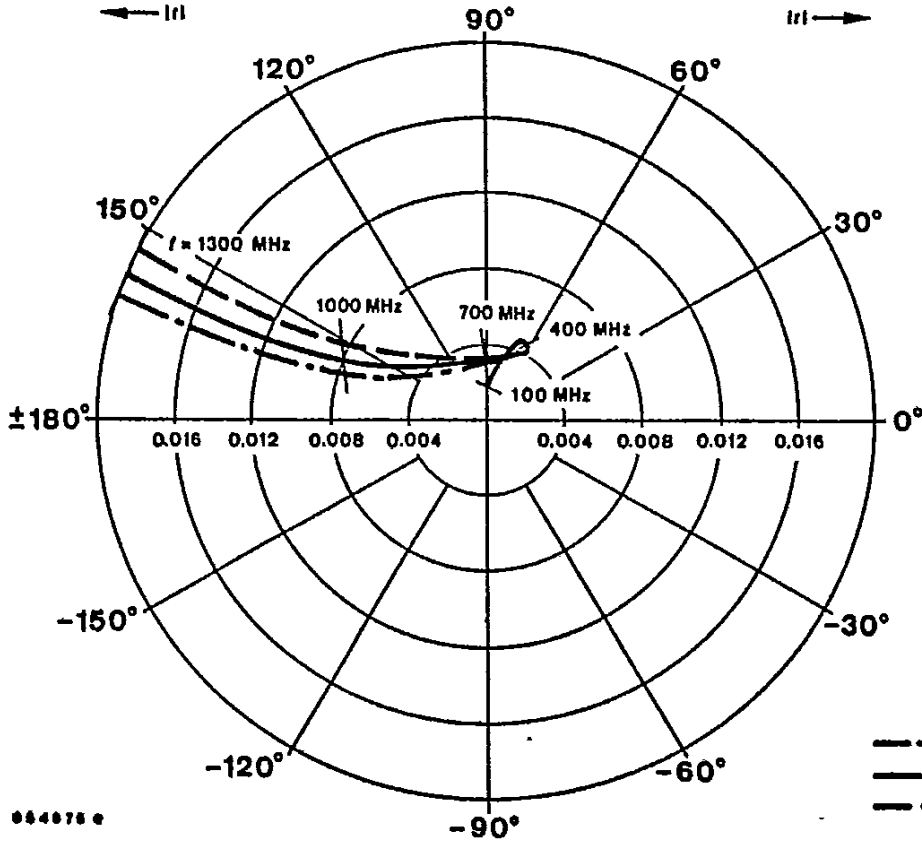
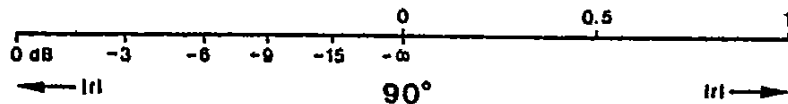
www.DataSheet4U.com





S₁₁
 $I_D = 10 \text{ mA}$
 $V_{DS} = 15 \text{ V}$
 $V_{G2S} = 4 \text{ V}$
 $Z_0 = 50 \Omega$
 $f = 100 \dots 1300 \text{ MHz}$
 $T_{amb} = 25^\circ \text{C}$

8846248



S₁₂
 $Z_0 = 50 \Omega$
 $V_{DS} = 15 \text{ V}$
 $V_{G2S} = 4 \text{ V}$
 - - - $I_D = 5 \text{ mA}$
 — $I_D = 10 \text{ mA}$
 - - - $I_D = 20 \text{ mA}$
 $f = 100 \dots 1300 \text{ MHz}$
 $T_{amb} = 25^\circ \text{C}$

8846248

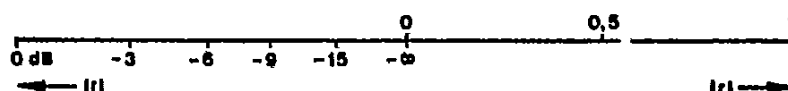
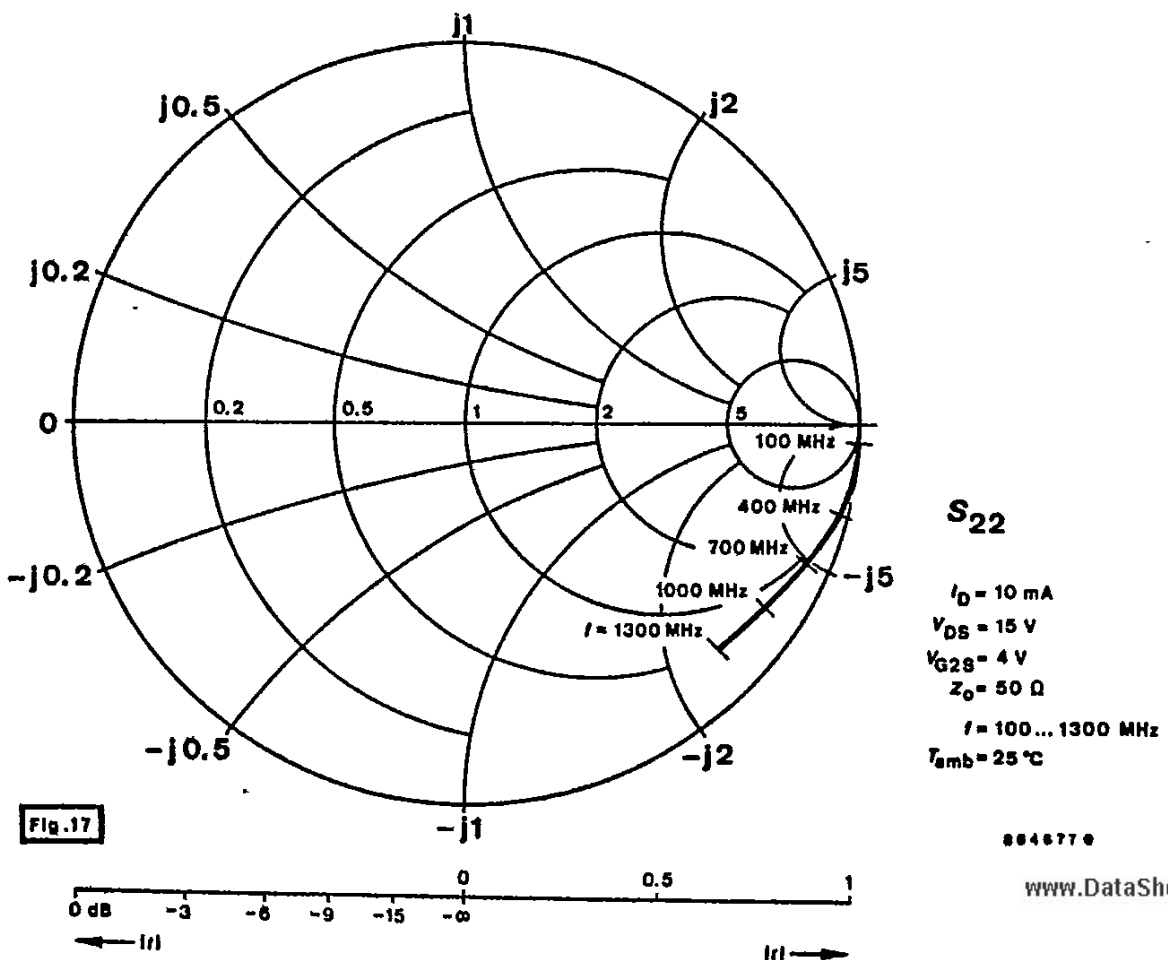
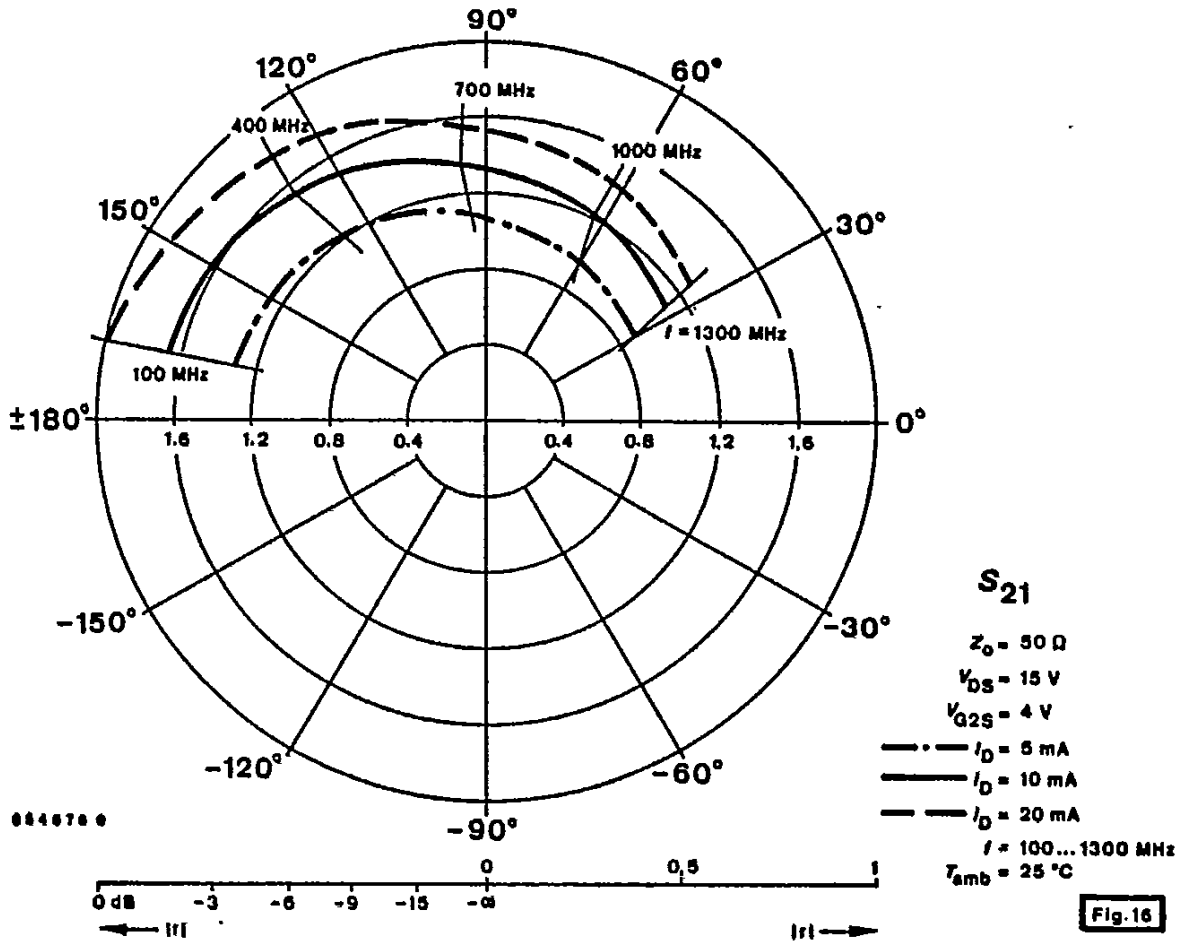


Fig.15

BF 966

www.DataSheet4U.com



7. Taping and Reeling

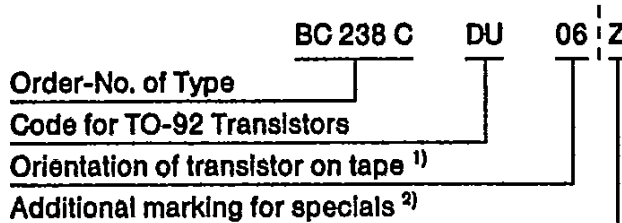
7.1. Taping of TO-92 Transistors

Standard reeling: Taped on reel, reeled together with a paper film.

7.1.1. Order Numbers

Add the taping-code to the order number.

Example:



¹⁾ 06 = View on flat side of transistor, view on gummed tape

05 = View on round side of transistor, view on gummed tape

²⁾ Additional marking "0": taping without paper film

Additional marking "Z": Zigzag folded tape in special box. Marking for orientation of transistor not necessary, because box can be opened on top or bottom

Example for order No.: BC 237 C DU Z

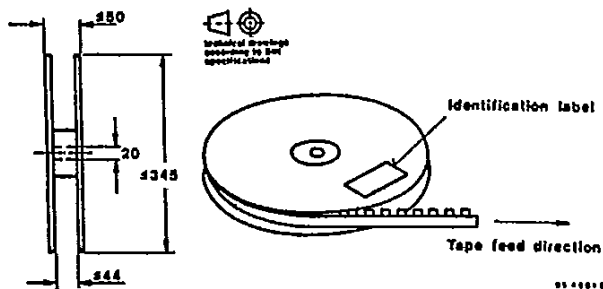


Fig. 7.1. Dimensions of reel in mm

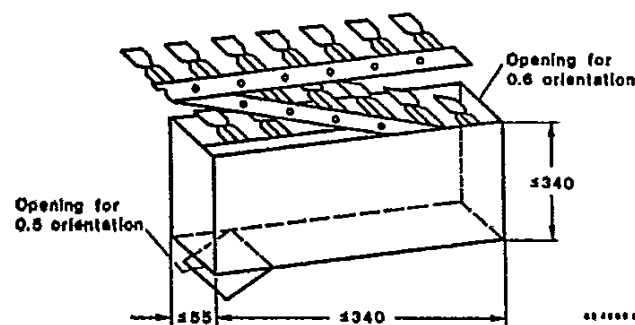


Fig. 7.2. Dimension of box for Zigzag folding in mm

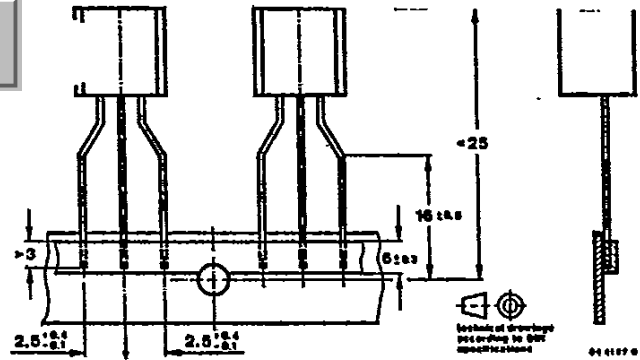


Fig. 7.3 Dimensions of tape in mm

7.1.2 Quantity of devices

1 000 devices per reel

2 000 devices per folded tape in special box.

7.2. Taped transistors in SOT 23 and SOT 143 case

7.2.1. Designation

a) Standard taping

Designation is attached with code GS 08 in case of standard taping. Example for normal version transistors as standard taped: BF 569-GS 08.

Example for R-version transistors as standard taped: BF 569 R-GS 08.

In case of standard taping, the transistor orientation on the tape is shown in Fig. 7.4 and Fig. 7.5.

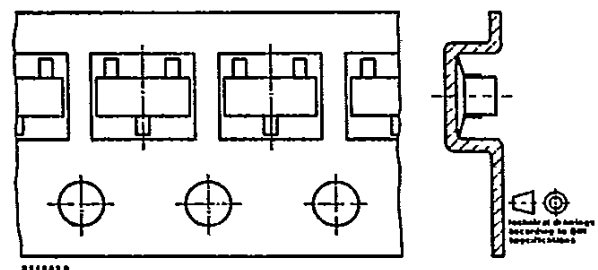


Fig. 7.4 Standard taped SOT 23

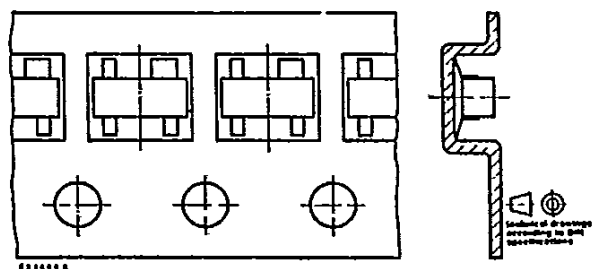


Fig. 7.5. Standard taped SOT 143

