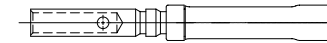
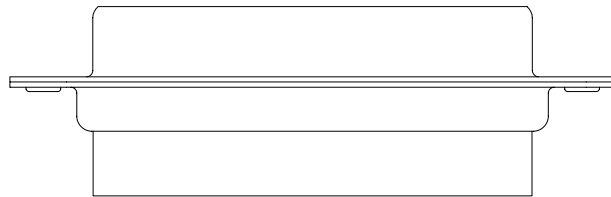
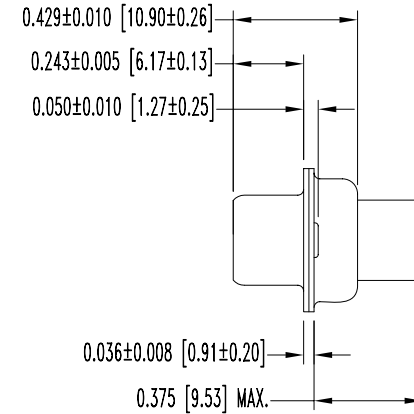
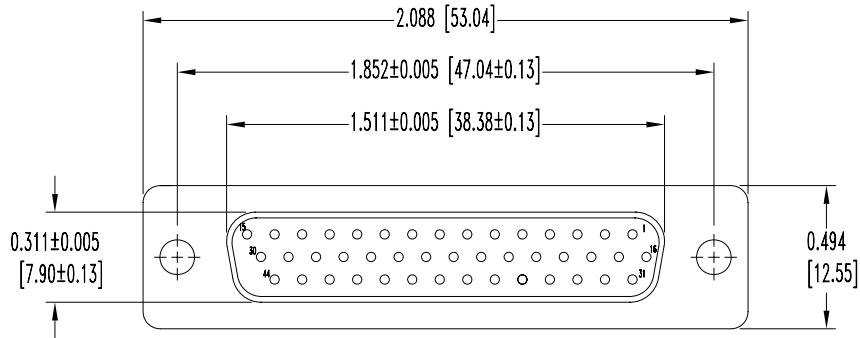


POSITRONIC INDUSTRIES BELIEVES THE DATA ON THIS DRAWING TO BE RELIABLE. SINCE THE TECHNICAL INFORMATION IS GIVEN FREE OF CHARGE, THE USER EMPLOYS SUCH INFORMATION AT HIS OWN DISCRETION AND RISK. POSITRONIC INDUSTRIES ASSUMES NO RESPONSIBILITY FOR RESULTS OBTAINED OR DAMAGES INCURRED FROM USE OF SUCH INFORMATION IN WHOLE OR IN PART.

| DATE | REV | REVISION RECORD | APP | DR | CK |
|--------|-----|-----------------|-----|-----|----|
| 8-2-00 | NC | ECO 16603 | | JLG | |
| | | | | | |
| | | | | | |



FEMALE CONTACT
(ENLARGED)
44X

NOTES:

- MATERIALS AND FINISHES:
INSULATOR: GLASS FILLED POLYESTER PER MIL-M-24519, UL 94V-0, ASTM E-595, NASA-RP-1124, BLUE COLOR.
CONTACTS: PRECISION MACHINED HIGH TENSILE COPPER ALLOY WITH BRASS SHROUD, 0.000050 [1.25μ] GOLD OVER COPPER PLATE.
SHELLS: BRASS, 0.000050 [1.25μ] GOLD OVER COPPER PLATE.
- ELECTRICAL CHARACTERISTICS:
CONTACT CURRENT RATING: 5 AMPERES NOMINAL.
INITIAL CONTACT RESISTANCE: 0.005 OHMS MAXIMUM.
PROOF VOLTAGE: 1,000 V r.m.s.
WORKING VOLTAGE: 300 V r.m.s.
- TEMPERATURE RANGE: -55°C TO +125°C.
- DIMENSIONS ARE IN INCHES [MILLIMETERS].

| | | | |
|----------------------|--|--------------------------|-----------------|
| | POSITRONIC INDUSTRIES INC. www.connectpositronic.com | | FSCM 28198 |
| | DECIMAL TOL. ± 0.015 [0.38] | SDD SERIES | SCALE N.T.S. |
| WF # 24044 | TITLE SDD44F1000G | | |
| ANGULAR TOL. ± 5° | DATE 8-2-00 | DRAWING NUMBER SK3390 | REV. NC |