

New Jersey Semi-Conductor Products, Inc.

20 STERN AVE.
 SPRINGFIELD, NEW JERSEY 07081
 U.S.A.

TELEPHONE: (973) 376-2922
 (212) 227-6005
 FAX: (973) 376-8960

PARAMETERS

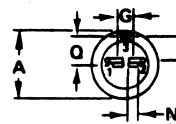
2N4188

SCR, $V(DRM) = 400\text{ V TO }499.9\text{ V}$

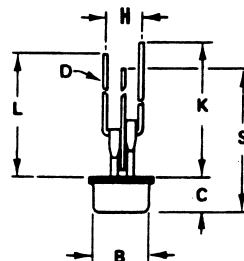
Description: SCR, $V(DRM) = 400\text{ V to }499.9\text{ V}$

Manufacturer.....
 Mil/High-Rel? (Y/N).....
 $V(drm)$ Max..... 400
 $I_t(stat)$ Max. (A)..... 8.02
 @Temp. (test) (x°C)..... 75#
 Supp Curr. I(TSM)..... 100N
 Firing Char-Igt Max..... 60
 Firing Char-Vgt Max..... 2.
 $I_d(off)$ Max. (A)..... 2.0m
 @Temp. (test) (x°C)..... 100u
 $I(h)$ Max. (A)..... 60
 $V(T)$ Max..... 2.0
 @It (A)..... 15
 Dv/Dt Worst Case..... 50B%
 $t(switch)$ Off Typ. Time (S)... 1.0u
 @It (test) (A)..... 5.0
 $t(switch)$ Off Typ. Time (S)... 15u
 Oper. Temp (x°C) Min..... -40
 Oper. Temp (x°C) Max..... 100u
 Pkg Style..... Press-9
 Surface Mounted (Y/N)..... N

u Junction Temperature # Case Temperature % @ above 125x°C B Typical
 2 $I_t(rms)$ N Over Full Temperature Range Measured at < 25x°C



STYLE 1:
 PIN 1. GATE
 2. CATHODE
 3. ANODE



DIM	MILLIMETERS		INCHES	
	MIN	MAX	MIN	MAX
A	-	10.92	-	0.430
B	-	8.89	-	0.350
C	-	5.97	-	0.235
D	0.76	0.86	0.030	0.034
G	2.29	2.79	0.090	0.110
H	8.89	9.39	0.350	0.370
K	33.53	-	1.320	-
L	-31.50 TYP	-	-1.240 TYP	-
N	1.65	1.91	0.065	0.075
P	3.43	3.68	0.135	0.145
Q	4.57	5.08	0.180	0.200
S	30.48	-	1.200	-