

FUJITSU MEDIA DEVICES

SRF836NJC31-TB12R

○SYSTEM CDMA Tx FILTER
 ○CARRIER FREQUENCY 824 ~ 849 MHz

ELECTRICAL CHARACTERISTICS

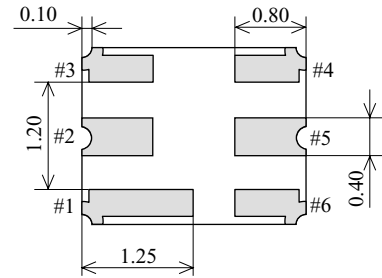
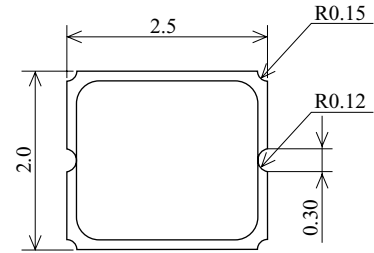
Ta = -30 ~ +85°C

Items	Conditions [MHz]	Min.	Typ.*	Max.	Unit
Maximum insertion loss in pass band	824 ~ 849	-	3.0	3.5	dB
Pass band flatness	824 ~ 849	-	1.0	1.6	dB
Out of band rejection (Absolute value)	DC ~ 800	35	40	-	dB
	869 ~ 894	28	32	-	dB
	978 ~ 1006	40	45	-	dB
	1050 ~ 2600	20	30	-	dB
Pass band VSWR	824 ~ 849	-	1.7	2.3	-
Nominal impedance		-	50	-	Ω

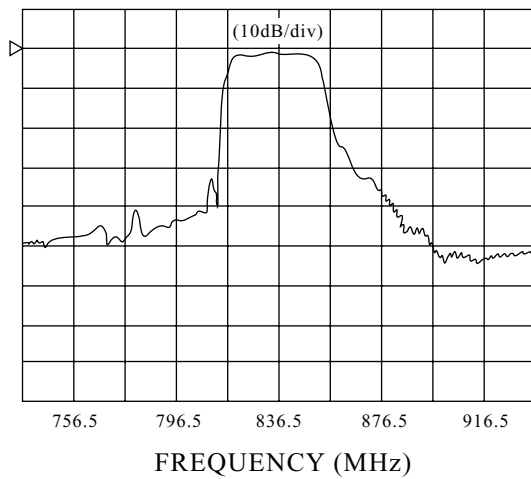
*Typical values are specified at 25°C

PACKAGE DIMENSION

Unit : mm



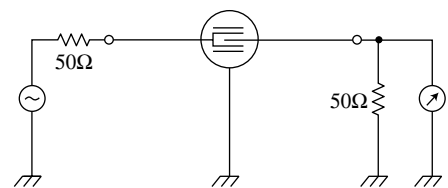
FREQUENCY CHARACTERISTICS



TERMINATIONS

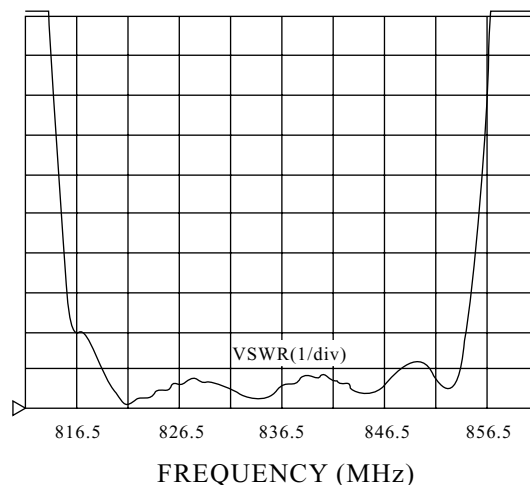
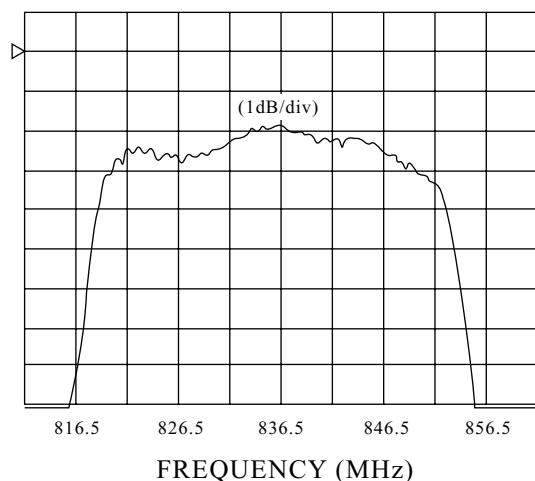
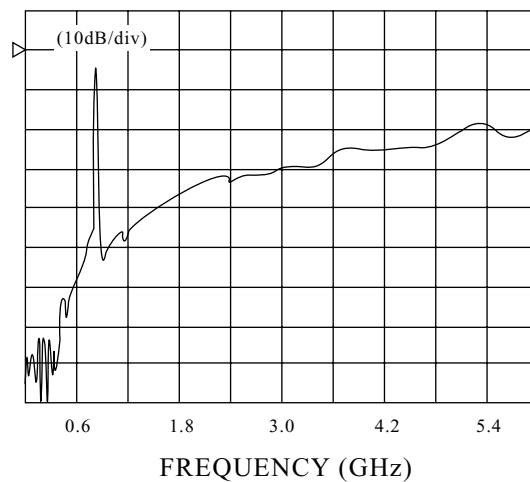
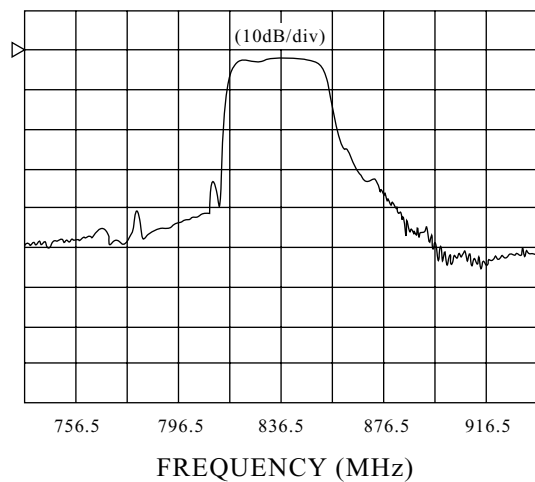
- No.
- #1. GROUND
- #2. INPUT/OUTPUT
- #3. GROUND
- #4. GROUND
- #5. OUTPUT/INPUT
- #6. GROUND

MEASUREMENT CIRCUIT



* The information contained herein is presented only as a guide for the applications of our products. No responsibility is assumed by Fujitsu Media Devices for any infringements of patents or other rights of the third parties which may result from its use. No license is granted by implication or otherwise under any patent or patent rights of Fujitsu Media Devices or others.
 * The information contained herein may be changed without prior notice. It is therefore advisable to contact Fujitsu Media Devices before proceeding with the design of equipment incorporating this product.

FREQUENCY CHARACTERISTICS



ABSOLUTE MAXIMUM RATINGS (Ta=25°C)

(Ta = 25°C unless otherwise noted)

Items	Electrodes	Ratings	Notes
DC voltage	Between any two electrodes	0 V	
Input power	Between input and ground	13 dBm	
Operating temp.		-30 ~ +85°C	
Storage temp.		-40 ~ +85°C	